



**University of
Alabama System**

THE UNIVERSITY OF ALABAMA
THE UNIVERSITY OF ALABAMA AT BIRMINGHAM
THE UNIVERSITY OF ALABAMA IN HUNTSVILLE
THE UAB HEALTH SYSTEM

Data Summary

(November 2021)



UNIVERSITY OF ALABAMA SYSTEM BOARD OF TRUSTEES



Mike Brock
2ND CONGRESSIONAL
DISTRICT



Karen Brooks
7TH CONGRESSIONAL
DISTRICT



Ronald Gray
5TH CONGRESSIONAL
DISTRICT



Barbara Humphrey
7TH CONGRESSIONAL
DISTRICT



Vanessa Leonard
6TH CONGRESSIONAL
DISTRICT



W. Davis Malone III
2ND CONGRESSIONAL
DISTRICT



Evelyn V. Mauldin
4TH CONGRESSIONAL
DISTRICT



Harris Morrisette
1ST CONGRESSIONAL
DISTRICT



Scott Phelps
4TH CONGRESSIONAL
DISTRICT



William Sexton
5TH CONGRESSIONAL
DISTRICT



Kenneth Simon
7TH CONGRESSIONAL
DISTRICT



Marietta Urquhart
1ST CONGRESSIONAL
DISTRICT



Kenneth Vandervoort M.D.
3RD CONGRESSIONAL
DISTRICT



James Wilson III
3RD CONGRESSIONAL
DISTRICT



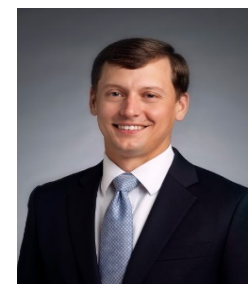
W. Stancil Starnes
6TH CONGRESSIONAL
DISTRICT, PRESIDENT
PRO TEMPORE



Kay Ivey
GOVERNOR, STATE OF
ALABAMA, PRESIDENT EX-
OFFICIO

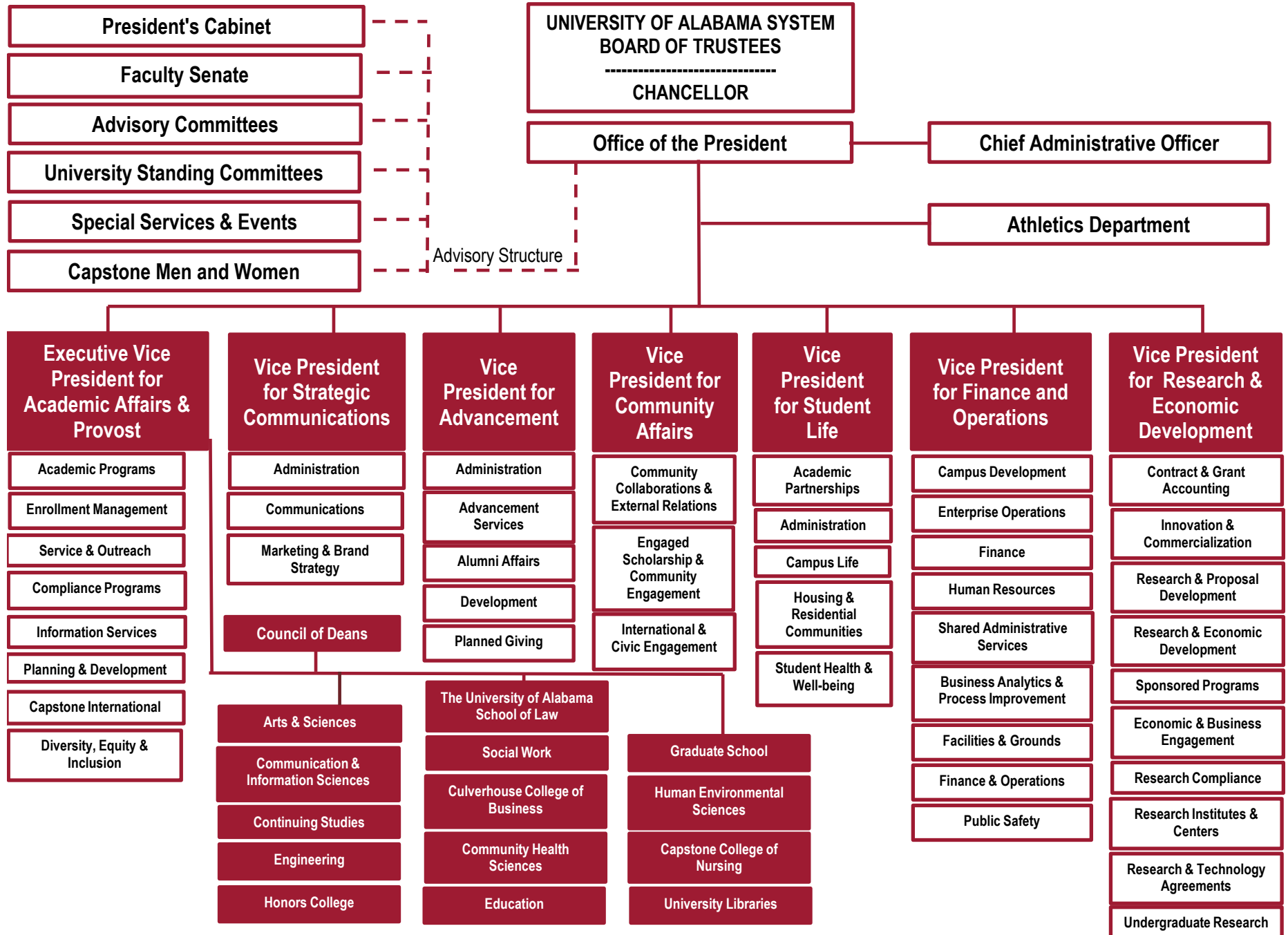


Finis E. St. John IV
CHANCELLOR

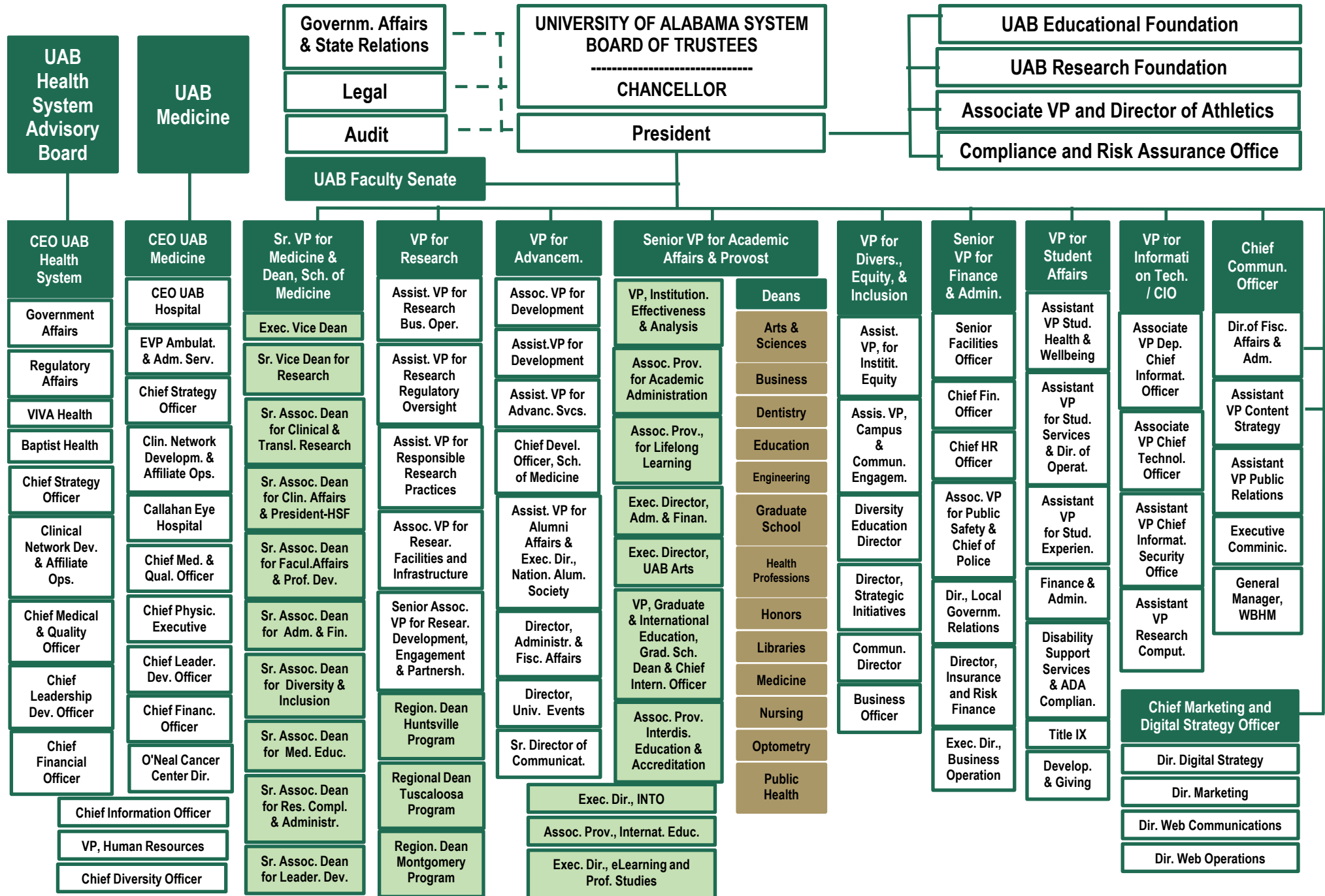


Mark Foley
SECRETARY OF THE
BOARD OF TRUSTEES

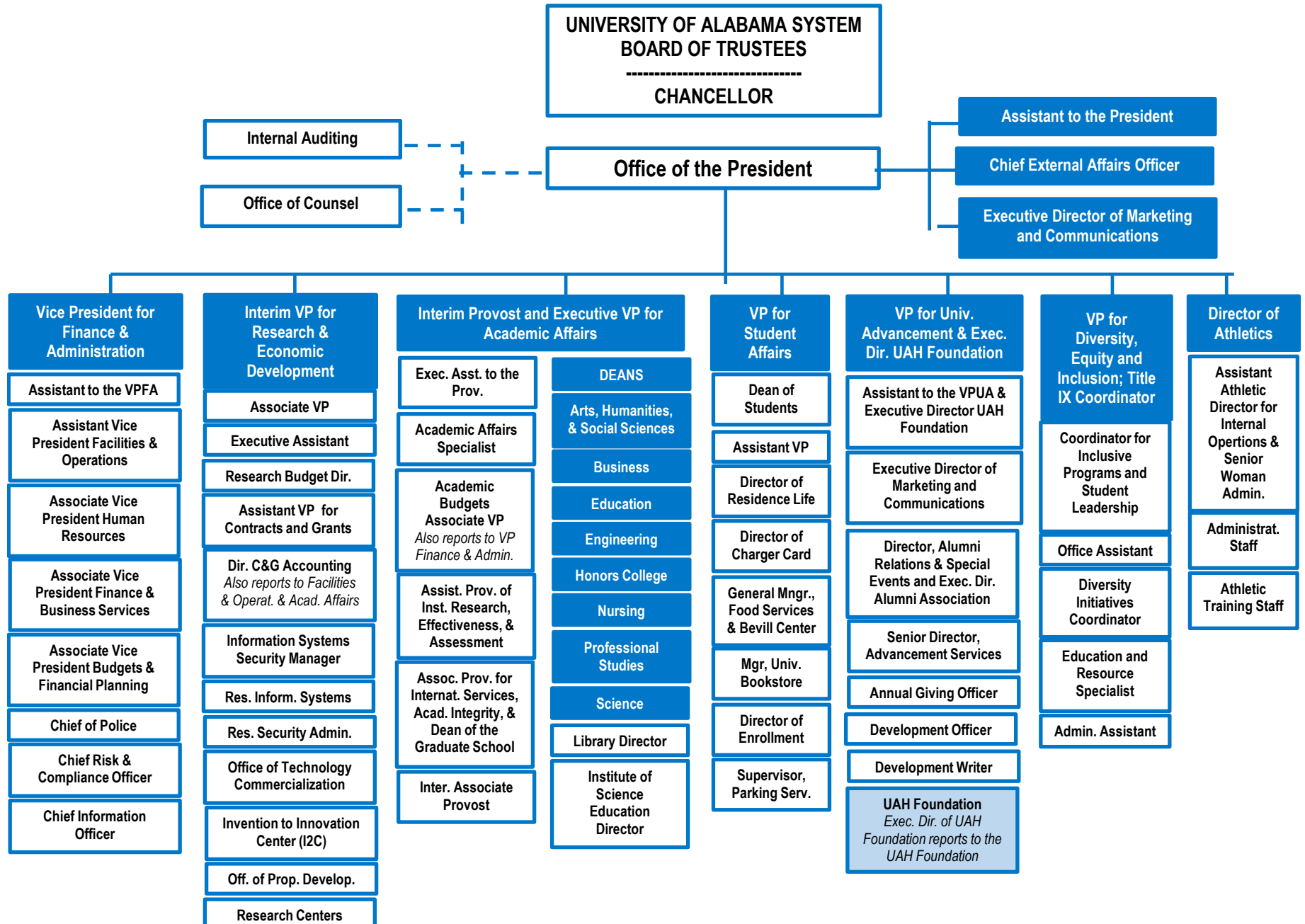
The University of Alabama Organizational Chart



The University of Alabama at Birmingham Organizational Chart



The University of Alabama in Huntsville Organizational Chart



Admissions and Test Scores

	2005	2006	2007	2008	2009	2010	2011	2012	2013	2014	2015	2016	2017	2018	2019	2020	2021
UA																	
Applications	10,555	12,522	14,313	18,500	18,967	20,112	22,136	26,409	30,975	33,736	36,203	38,237	38,129	37,302	38,505	39,560	42,421
Admissions	7,776	8,770	9,140	11,172	11,133	10,776	9,636	14,019	17,515	17,221	19,400	20,107	20,321	22,032	31,835	31,804	33,472
Acceptance rate	74%	70%	64%	60%	59%	54%	44%	53%	57%	51%	54%	53%	53%	59%	83%	80%	79%
Enrollment	3,739	4,378	4,538	5,116	5,148	5,563	5,766	6,397	6,454	6,824	7,211	7,559	7,407	6,663	6,764	6,507	7,593
Yield rate	48%	50%	50%	46%	46%	52%	60%	46%	37%	40%	37%	38%	36%	30%	21%	20%	23%
# Submitting SAT	1,292	1,619	1,593	1,720	1,797	1,068	1,200	1,433	1,469	1,590	1,536	1,459	1,397	1,669	1,808	1,492	1,302
% Submitting SAT	35%	37%	35%	34%	35%	19%	21%	22%	23%	23%	21%	19%	19%	25%	27%	23%	17%
# Submitting ACT	3,223	3,694	3,898	4,439	4,305	4,316	4,447	4,803	4,883	5,208	5,599	6,062	5,981	4,873	4,892	4,986	4,795
% Submitting ACT	86%	84%	86%	87%	84%	78%	77%	75%	76%	76%	78%	80%	81%	73%	72%	77%	63%
ACT Comp, 25th perc.	20	21	21	21	21	22	22	22	22	22	22	23	23	23	23	23	21
ACT Comp, 75th perc.	26	27	27	27	28	29	29	30	30	31	31	31	32	31	31	31	31
UAB																	
Applications	4,255	4,221	4,221	5,106	4,418	4,667	5,575	5,575	5,689	5,710	7,672	9,459	7,555	7,845	8,298	10,113	11,906
Admissions	3,731	3,705	3,705	4,345	3,692	3,847	4,027	4,027	4,934	4,893	4,636	5,499	6,936	7,226	6,112	8,415	10,541
Acceptance rate	88%	88%	88%	85%	84%	82%	72%	72%	87%	86%	60%	58%	92%	92%	74%	83%	89%
Enrollment	1,587	1,531	1,531	2,213	1,517	1,571	1,605	1,605	1,773	1,748	1,621	2,021	2,299	2,299	2,346	2,154	2,415
Yield rate	43%	41%	41%	51%	41%	41%	40%	40%	36%	36%	35%	37%	33%	32%	38%	26%	23%
# Submitting SAT	166	150	128	90	92	67	79	79	103	92	106	85	15	7	312	1	79
% Submitting SAT	10%	10%	8%	4%	6%	4%	5%	5%	6%	5%	7%	4%	1%	0%	13%	0%	3%
# Submitting ACT	1,376	1,326	1,278	1,185	1,411	1,494	1,500	1,500	1,645	1,628	1,497	1,849	2,093	2,253	2,159	2,119	1,485
% Submitting ACT	87%	87%	83%	54%	93%	95%	93%	93%	93%	93%	92%	91%	91%	98%	92%	98%	61%
ACT Comp, 25th perc.	20	21	21	21	21	21	21	21	22	21	22	21	21	21	22	22	23
ACT Comp, 75th perc.	26	26	27	27	27	27	27	27	28	27	28	28	28	29	29	30	30
UAH																	
Applications	1,698	1,809	1,850	1,874	1,924	1,846	1,952	1,938	2,054	2,104	3,308	4,545	4,454	4,543	5,295	5,793	5,781
Admissions	1,480	1,598	1,628	1,671	1,387	1,221	1,243	1,505	1,656	1,726	2,686	3,467	3,618	3,674	4,372	4,467	4,259
Acceptance rate	87%	88%	88%	89%	72%	66%	64%	78%	81%	82%	81%	76%	81%	81%	83%	77%	74%
Enrollment	660	838	800	796	802	622	677	624	651	724	1,038	1,213	1,352	1,435	1,497	1,345	1,204
Yield rate	45%	52%	49%	48%	58%	51%	54%	41%	39%	42%	39%	35%	37%	39%	34%	30%	28%
# Submitting SAT	180	208	195	191	171	113	126	120	118	111	183	166	29	8	108	213	65
% Submitting SAT	27%	25%	24%	24%	21%	18%	19%	19%	18%	15%	18%	14%	2%	1%	7%	16%	5%
# Submitting ACT	580	759	730	723	740	575	623	581	610	690	975	1,152	1,292	1,331	1,380	1,252	1,108
% Submitting ACT	88%	91%	91%	91%	92%	92%	92%	93%	94%	95%	94%	95%	96%	93%	92%	93%	92%
ACT Comp, 25th perc.	22	21	22	22	22	22	22	22	23	24	24	25	25	25	25	24	24
ACT Comp, 75th perc.	28	27	27	27	28	29	29	29	29	30	30	31	31	31	31	31	30

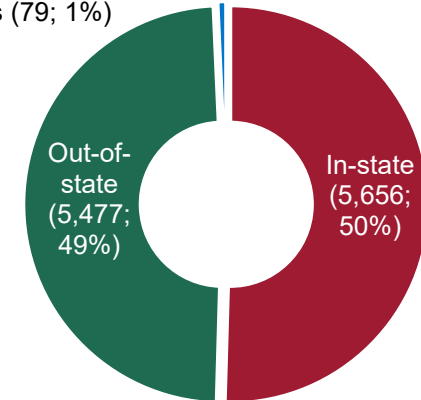
Data Source (years prior to 2020): Integrated Postsecondary Education Data System (IPEDS). *Data Source (2021):* campus preliminary reports.

First-time Freshmen by Geographic Origin

Fall 2021

11,212

Foreign countries (79; 1%)



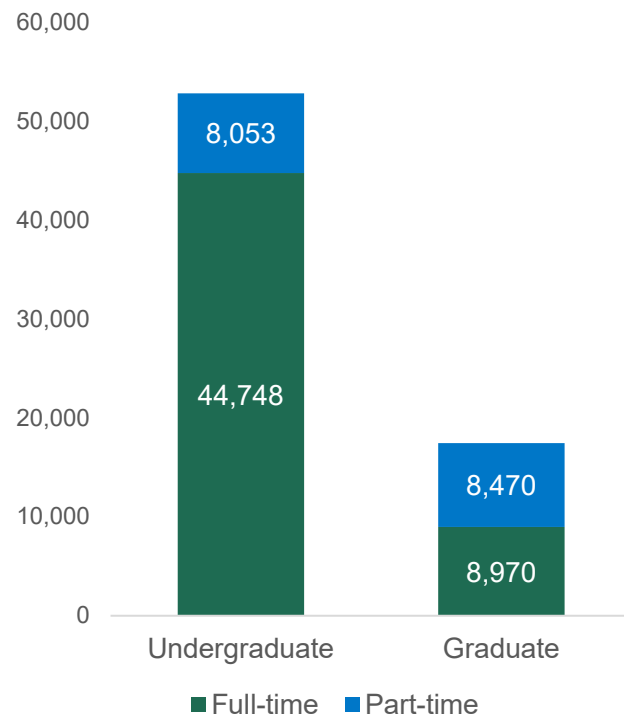
	1986	1996	1998	2000	2002	2004	2005	2006	2008	2010	2012	2013	2014	2016	2018	2019	2020	2021
UA	2,913	2,066	2,616	2,956	2,654	3,367	3,735	4,378	5,116	5,519	6,371	6,454	6,824	7,559	6,663	6,764	6,507	7,593
In-state	1,864	1,384	1,941	2,214	2,028	2,441	2,592	2,898	3,221	3,121	2,846	2,578	2,462	2,412	2,271	2,533	2,701	2,851
% In-state	64%	67%	74%	75%	76%	72%	69%	66%	63%	57%	45%	40%	36%	32%	34%	37%	42%	38%
Out-of-state	1,013	645	651	719	602	909	1,137	1,451	1,880	2,339	3,327	3,714	4,269	5,089	4,267	4,150	3,772	4,701
Foreign countries	36	37	24	23	24	17	6	29	15	59	198	162	93	58	125	81	34	41
UAB	973	1,131	1,175	1,314	1,471	1,628	1,587	1,531	1,277	1,571	1,676	1,773	1,748	2,021	2,299	2,346	2,154	2,415
In-state	921	1,038	1,093	1,185	1,337	1,474	1,430	1,377	1,155	1,407	1,452	1,529	1,471	1,712	1,917	1,954	1,763	1,989
% In-state	95%	92%	93%	90%	91%	91%	90%	90%	90%	90%	87%	86%	84%	85%	83%	83%	82%	82%
Out-of-state	40	71	51	90	108	123	124	133	104	151	206	225	243	262	353	361	362	401
Foreign countries	12	22	31	39	26	31	33	21	18	13	18	19	34	47	29	31	29	25
UAH	520	442	480	606	628	680	660	838	796	622	624	651	724	1,213	1,435	1,497	1,345	1,204
In-state	484	360	383	477	484	559	524	704	650	503	505	514	581	861	913	936	884	816
% In-state	93%	81%	80%	79%	77%	82%	79%	84%	82%	81%	81%	79%	80%	71%	64%	63%	66%	68%
Out-of-state	35	60	82	124	132	103	113	105	127	106	109	110	133	323	494	527	446	375
Foreign countries	1	22	15	5	12	18	23	29	19	13	10	27	10	29	28	34	15	13
Total	4,406	3,639	4,271	4,876	4,753	5,675	5,982	6,747	7,189	7,712	8,671	8,878	9,296	10,793	10,397	10,607	10,006	11,212

Data Source (years prior to 2021): Integrated Postsecondary Education Data System (IPEDS). Data Source (2021) : campus preliminary reports.



Fall 2021 Enrollment

70,241



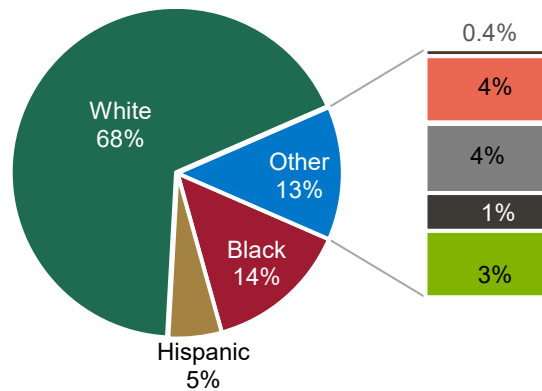
Enrollment by Level and Status

	2012	2013	2014	2015	2016	2017	2018	2019	2020	2021
UA	33,503	34,752	36,047	37,098	37,663	38,563	38,390	38,100	37,840	38,316
Graduate	5,477	5,312	5,295	5,140	5,100	5,258	5,362	5,305	6,170	6,631
Full-time	3,328	2,950	3,286	3,321	3,268	3,375	3,452	3,460	3,783	3,771
Part-time	2,149	2,362	2,009	1,819	1,832	1,883	1,910	1,845	2,387	2,860
Undergraduate	28,026	29,440	30,752	31,958	32,563	33,305	33,028	32,795	31,670	31,685
Full-time	25,430	26,548	27,737	28,689	29,220	29,923	29,586	29,135	27,750	28,124
Part-time	2,596	2,892	3,015	3,269	3,343	3,382	3,442	3,660	3,920	3,561
UAB	17,999	18,568	18,698	18,333	19,535	20,902	21,923	22,080	22,563	22,289
Graduate	6,708	7,066	7,019	6,822	7,166	7,768	8,087	8,244	8,685	8,742
Full-time	3,695	3,604	3,862	3,515	3,720	4,057	4,178	4,287	4,478	4,525
Part-time	3,013	3,462	3,157	3,307	3,446	3,711	3,909	3,957	4,207	4,217
Undergraduate	11,291	11,502	11,679	11,511	12,369	13,134	13,836	13,836	13,878	13,547
Full-time	8,270	8,357	8,472	8,297	8,971	9,677	10,042	10,315	10,402	10,401
Part-time	3,021	3,145	3,207	3,214	3,398	3,457	3,794	3,521	3,476	3,146
UAH	7,636	7,376	7,348	7,866	8,468	9,101	9,736	9,988	10,000	9,636
Graduate	1,754	1,680	1,730	1,853	1,961	2,011	2,065	1,999	1,973	2,067
Full-time	559	565	631	708	760	742	732	601	615	674
Part-time	1,195	1,115	1,099	1,145	1,201	1,269	1,333	1,398	1,358	1,393
Undergraduate	5,882	5,696	5,618	6,013	6,507	7,090	7,671	7,989	8,027	7,569
Full-time	4,450	4,237	4,304	4,774	5,257	5,903	6,393	6,749	6,730	6,223
Part-time	1,432	1,459	1,314	1,239	1,250	1,187	1,278	1,240	1,297	1,346
Total	59,138	60,696	62,093	63,297	65,666	68,566	70,049	70,168	70,403	70,241

Data Source (years prior to 2021): Integrated Postsecondary Education Data System (IPEDS). Data Source (2021): campus preliminary reports.

African American Students

14%



- American Indian or Alaska Native (259; 0.4%)
- Asian (2,460; 3%)
- Black or African American (9,928; 14%)
- Hispanic (3,653; 5%)
- Native Hawaiian or Pacific Islander (51; 0.1%)
- Nonresident alien (2,559; 4%)
- Race/ethnicity unknown (1,401; 1%)
- Two or more races (2,459; 3%)
- White (47,471; 69%)

Enrollment by Race/Ethnicity

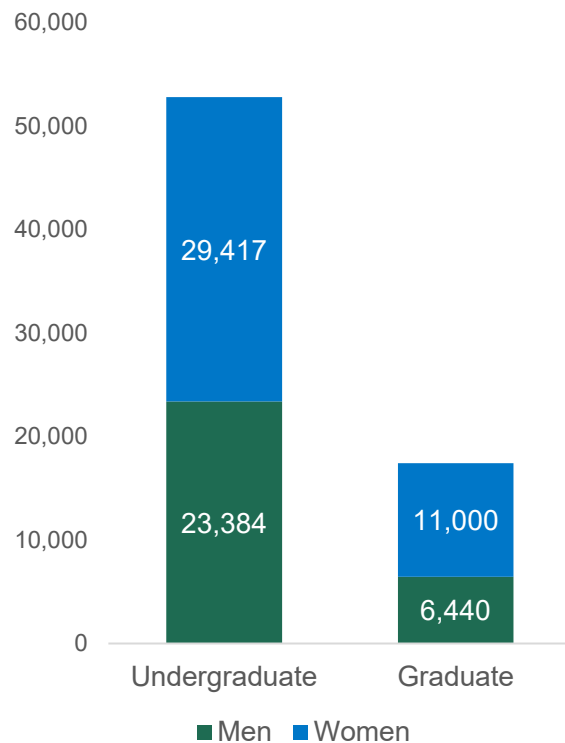
	2012	2013	2014	2015	2016	2017	2018	2019	2020	2021
UA	33,503	34,752	36,047	37,098	37,663	38,563	38,390	38,100	37,840	38,316
American Indian or Alaska Native	148	152	138	137	146	132	139	147	127	137
Asian	390	406	394	455	481	471	466	494	544	589
Black or African American	3,988	3,983	4,067	4,123	4,057	4,081	4,038	4,002	4,144	4,277
Hispanic	920	1,041	1,214	1,440	1,582	1,736	1,831	1,835	1,870	2,037
Native Hawaiian or Pacific Islander	29	37	32	36	37	43	42	43	31	30
Nonresident alien	1,408	1,541	1,687	1,509	1,312	1,171	1,224	1,454	1,176	1,151
Race/ethnicity unknown	151	142	144	146	171	209	240	240	247	325
Two or more races	543	692	885	943	1,049	1,176	1,242	1,266	1,286	1,277
White	25,926	26,758	27,486	28,309	28,828	29,544	29,168	28,619	28,415	28,493
UAB	17,999	18,568	18,698	18,333	19,535	20,902	21,923	22,080	22,563	22,289
American Indian or Alaska Native	44	48	46	48	58	64	59	47	59	52
Asian	840	900	931	1,009	1,094	1,180	1,305	1,380	1,466	1,527
Black or African American	3,862	3,929	3,943	3,851	4,184	4,435	4,795	4,622	4,746	4,758
Hispanic	438	488	496	554	593	673	672	977	1,050	1,092
Native Hawaiian or Pacific Islander	15	14	14	12	10	8	6	4	8	6
Nonresident alien	596	575	665	656	777	970	1,049	1,107	1,084	1,110
Race/ethnicity unknown	339	237	200	182	276	298	289	326	826	602
Two or more races	446	524	563	613	672	744	828	781	358	825
White	11,419	11,853	11,840	11,408	11,871	12,530	12,920	12,836	12,966	12,317
UAH	7,636	7,376	7,348	7,866	8,468	9,101	9,736	9,988	10,000	9,636
American Indian or Alaska Native	109	94	96	97	99	102	97	95	77	70
Asian	257	276	268	292	328	354	364	352	356	344
Black or African American	945	863	826	889	896	947	946	894	910	893
Hispanic	223	224	248	284	317	383	458	506	530	524
Native Hawaiian or Pacific Islander	1	1	1	0	0	7	6	20	16	15
Nonresident alien	410	450	452	508	522	491	449	411	341	298
Race/ethnicity unknown	244	244	257	250	284	82	383	483	504	474
Two or more races	93	107	109	136	135	206	245	303	364	357
White	5,354	5,117	5,091	5,410	5,887	6,529	6,788	6,924	6,902	6,661
Total	59,138	60,696	62,093	63,297	65,666	68,566	70,049	70,168	70,403	70,241

Data Source (years prior to 2021): Integrated Postsecondary Education Data System (IPEDS). Data Source (2021): campus preliminary reports.



Female Students

58%



Enrollment by Level and Gender

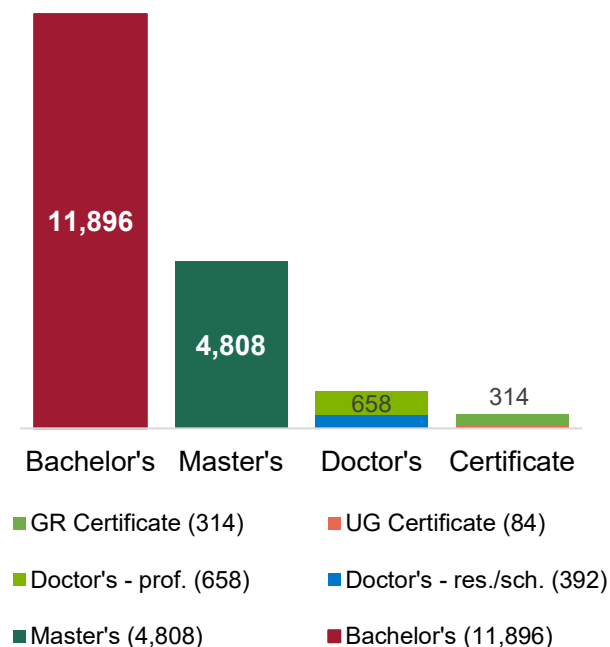
	2012	2013	2014	2015	2016	2017	2018	2019	2020	2021
UA	33,503	34,752	36,047	37,098	37,663	38,563	38,390	38,100	37,840	38,316
Undergraduate	28,026	29,440	30,752	31,958	32,563	33,305	33,028	32,795	31,670	31,685
Men	12,997	13,556	14,066	14,424	14,451	14,689	14,586	14,518	13,833	13,780
Women	15,029	15,884	16,686	17,534	18,112	18,616	18,442	18,277	17,837	17,905
Graduate	5,477	5,312	5,295	5,140	5,100	5,258	5,362	5,305	6,170	6,631
Men	2,249	2,207	2,165	2,140	2,138	2,181	2,120	2,094	2,308	2,448
Women	3,228	3,105	3,130	3,000	2,962	3,077	3,242	3,211	3,862	4,183
UAB	17,999	18,568	18,698	18,333	19,535	20,902	21,923	22,080	22,563	22,289
Undergraduate	11,291	11,502	11,679	11,511	12,369	13,134	13,836	13,836	13,878	13,547
Men	4,766	4,780	4,877	4,748	5,059	5,325	5,419	5,356	5,314	5,129
Women	6,525	6,722	6,802	6,763	7,310	7,809	8,417	8,480	8,564	8,418
Graduate	6,708	7,066	7,019	6,822	7,166	7,768	8,087	8,244	8,685	8,742
Men	2,397	2,529	2,533	2,437	2,531	2,783	2,944	2,862	2,929	2,982
Women	4,311	4,537	4,486	4,385	4,635	4,985	5,143	5,382	5,756	5,760
UAH	7,636	7,376	7,348	7,866	8,468	9,101	9,736	9,988	10,000	9,636
Undergraduate	5,882	5,696	5,618	6,013	6,507	7,090	7,671	7,989	8,027	7,569
Men	3,197	3,177	3,210	3,449	3,781	4,097	4,421	4,614	4,717	4,475
Women	2,685	2,519	2,408	2,564	2,726	2,993	3,250	3,375	3,310	3,094
Graduate	1,754	1,680	1,730	1,853	1,961	2,011	2,065	1,999	1,973	2,067
Men	1,010	959	967	1,015	1,052	1,023	1,000	959	935	1,010
Women	744	721	763	838	909	988	1,065	1,040	1,038	1,057
Total	59,138	60,696	62,093	63,297	65,666	68,566	70,049	70,168	70,403	70,241

Data Source (years prior to 2021): Integrated Postsecondary Education Data System (IPEDS). Data Source (2021): campus preliminary reports.



2020-21
Degrees and Certificates

18,152



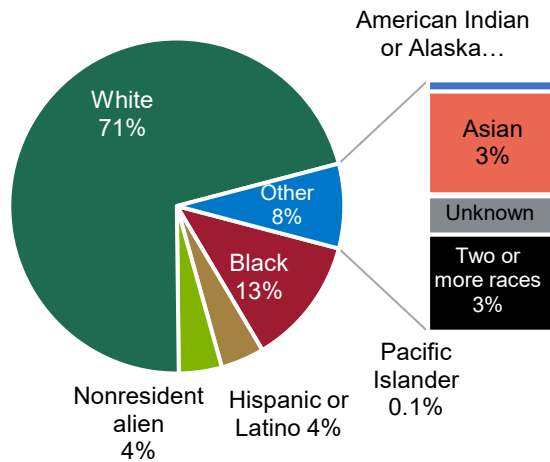
Degrees and Certificates Awarded

	11-12	12-13	13-14	14-15	15-16	16-17	17-18	18-19	19-20	20-21
UA	6,533	7,190	7,582	7,905	8,491	8,564	8,881	9,098	9,668	9,612
Bachelor's	4,482	5,000	5,408	5,662	6,354	6,501	6,750	6,912	7,429	7,363
Master's	1,571	1,659	1,645	1,672	1,650	1,578	1,681	1,750	1,831	1,859
Doctor's - res./sch.	183	234	211	264	240	245	232	229	193	203
Doctor's - prof.	244	259	290	259	209	192	196	187	190	161
Graduate certificate	53	38	28	48	38	48	22	20	25	26
UAB	4,143	4,367	4,291	4,500	4,430	4,921	5,225	5,596	5,911	6,256
Bachelor's	1,986	2,195	2,042	2,165	2,205	2,384	2,463	2,553	2,680	2,898
Master's	1,483	1,540	1,597	1,680	1,618	1,803	1,986	2,207	2,332	2,433
Doctor's - res./sch.	174	147	166	170	149	126	161	146	151	149
Doctor's - prof.	391	387	367	392	360	387	380	412	461	460
Doctor's - other	0	8	5	6	10	6	8	7	6	
Undergraduate cert.	22	20	21	18	15	43	47	76	74	71
Graduate certificate	87	70	93	69	73	172	180	195	207	245
UAH	1,515	1,610	1,599	1,603	1,655	1,700	1,911	1,972	2,270	2,284
Bachelor's degree	1,084	1,099	1,070	1,106	1,062	1,055	1,230	1,320	1,470	1,635
Master's degree	364	444	466	424	484	539	564	528	647	516
Doctor's - res./sch.	37	28	30	33	34	41	25	38	50	40
Doctor's - prof.	8	10	4	13	17	18	25	34	41	37
Undergraduate cert.			1	4	0	4	8	12	15	13
Graduate certificate	22	29	28	23	58	43	59	40	47	43
UAS Total	12,191	13,167	13,472	14,008	14,576	15,185	16,017	16,666	17,849	18,152

Data Source (years prior to 2021): Integrated Postsecondary Education Data System (IPEDS). Data Source (2021): campus preliminary reports.

2020-21 Degrees and Certificates
Conferred to African American Students

13%

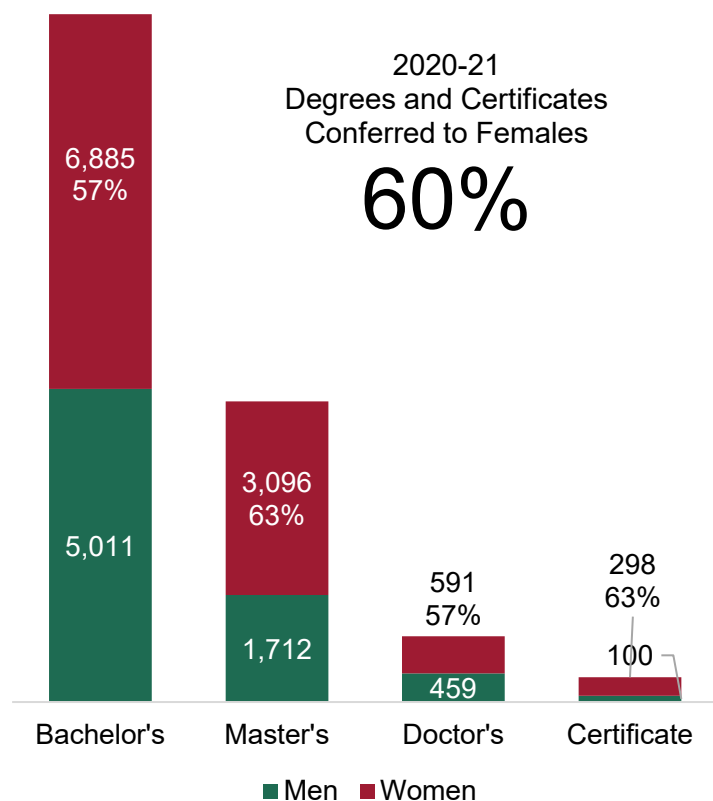


- American Indian or Alaska Native (66; 0.4%)
- Asian (607; 3%)
- Black or African American (2,248; 13%)
- Hispanic or Latino (762; 4%)
- Native Hawaiian or Other Pacific Islander (11; 0.1%)
- Nonresident alien (753; 4%)
- Race/ethnicity unknown (226; 1%)
- Two or more races (572; 3%)
- White (12,907; 71%)

Degrees and Certificates by Race/Ethnicity

	11-12	12-13	13-14	14-15	15-16	16-17	17-18	18-19	19-20	20-21
UA	6,533	7,190	7,582	7,905	8,491	8,564	8,881	9,098	9,668	9,612
American Indian or Alaska Native	21	31	41	37	30	37	24	34	36	26
Asian	81	89	106	74	107	124	102	122	116	111
Black or African American	714	798	792	882	869	841	889	935	946	863
Hispanic or Latino	126	154	192	194	269	265	333	355	470	452
Native Hawaiian or Other Pacific Island	2	1	8	4	12	4	9	5	16	9
Nonresident alien	197	210	285	310	358	400	319	301	324	290
Race/ethnicity unknown	11	26	41	36	36	25	45	42	61	61
Two or more races	35	46	99	130	163	185	221	234	255	319
White	5,346	5,835	6,018	6,238	6,647	6,683	6,939	7,070	7,444	7,481
UAB	4,143	4,367	4,291	4,500	4,430	4,921	5,225	5,596	5,911	6,256
American Indian or Alaska Native	18	10	10	44	14	10	15	15	12	16
Asian	176	211	204	208	215	280	302	316	364	400
Black or African American	766	813	820	805	777	896	918	1,018	1,063	1,200
Hispanic or Latino	78	97	100	118	128	159	166	216	213	222
Native Hawaiian or Other Pacific Island	2	1	5	4	5	5	4	4	3	
Nonresident alien	175	135	154	164	168	213	254	288	333	365
Race/ethnicity unknown	86	87	50	45	44	51	65	88	80	100
Two or more races	41	63	100	74	128	154	150	176	174	215
White	2,801	2,950	2,848	3,038	2,951	3,153	3,351	3,475	3,669	3,738
UAH	1,515	1,610	1,599	1,603	1,655	1,700	1,911	1,972	2,270	2,284
American Indian or Alaska Native	26	32	20	17	18	31	25	18	30	24
Asian	50	55	58	62	53	70	92	72	85	96
Black or African American	159	148	180	137	173	169	173	182	170	185
Hispanic or Latino	23	32	29	29	41	40	37	50	93	88
Native Hawaiian or Other Pacific Island	1				1	1		2	2	2
Nonresident alien	114	109	98	130	139	171	148	146	134	98
Race/ethnicity unknown	23	39	33	59	56	47	85	163	92	65
Two or more races	19	11	28	16	37	19	28	31	38	38
White	1,100	1,184	1,153	1,153	1,137	1,152	1,323	1,308	1,626	1,688
UAS Total	12,191	13,167	13,472	14,008	14,576	15,185	16,017	16,666	17,849	18,152

Data Source (years prior to 2021): Integrated Postsecondary Education Data System (IPEDS). Data Source (2021): campus preliminary reports.



Degrees and Certificates by Gender

	11-12	12-13	13-14	14-15	15-16	16-17	17-18	18-19	19-20	20-21
UA	6,533	7,190	7,582	7,905	8,491	8,564	8,881	9,098	9,668	9,612
Bachelor's	4,482	5,000	5,408	5,662	6,354	6,501	6,750	6,912	7,429	7,363
Men	2,017	2,213	2,449	2,427	2,777	2,836	2,877	2,917	3,178	3,058
Women	2,465	2,787	2,959	3,235	3,577	3,665	3,873	3,995	4,251	4,305
Master's	1,571	1,659	1,645	1,672	1,650	1,578	1,681	1,750	1,831	1,859
Men	604	654	656	630	654	623	688	642	681	694
Women	967	1,005	989	1,042	996	955	993	1,108	1,150	1,165
Doctor's	427	493	501	523	449	437	428	416	383	364
Men	208	217	228	227	211	194	201	197	189	175
Women	219	276	273	296	238	243	227	219	194	189
Certificate	53	38	28	48	38	48	22	20	25	26
Men	13	7	8	10	5	18	6	6	7	5
Women	40	31	20	38	33	30	16	14	18	21
UAB	4,143	4,367	4,291	4,500	4,430	4,921	5,225	5,596	5,911	6,256
Bachelor's	1,986	2,195	2,042	2,165	2,205	2,384	2,463	2,553	2,680	2,898
Men	800	853	800	823	873	942	986	1,006	974	1,053
Women	1,186	1,342	1,242	1,342	1,332	1,442	1,477	1,547	1,706	1,845
Master's	1,483	1,540	1,597	1,680	1,618	1,803	1,986	2,207	2,332	2,433
Men	499	491	509	530	530	590	650	757	788	794
Women	984	1,049	1,088	1,150	1,088	1,213	1,336	1,450	1,544	1,639
Doctor's	565	542	538	568	519	519	549	565	618	609
Men	246	237	229	267	267	235	229	232	253	251
Women	319	305	309	301	252	284	320	333	365	358
Certificate	109	90	114	87	88	215	227	271	281	316
Men	21	14	15	13	21	53	67	101	71	72
Women	88	76	99	74	67	162	160	170	210	244
UAH	1,515	1,610	1,599	1,603	1,655	1,700	1,911	1,972	2,270	2,284
Bachelor's	1,084	1,099	1,070	1,106	1,062	1,055	1,230	1,320	1,470	1,635
Men	509	538	513	583	567	587	647	710	746	900
Women	575	561	557	523	495	468	583	610	724	735
Master's	364	444	466	424	484	539	564	528	647	516
Men	225	237	238	234	255	284	291	253	312	224
Women	139	207	228	190	229	255	273	275	335	292
Doctor's	45	38	34	46	51	59	50	72	91	77
Men	25	23	23	27	25	31	20	28	40	33
Women	20	15	11	19	26	28	30	44	51	44
Certificate	22	29	29	27	58	47	67	52	62	56
Men	9	11	14	10	18	21	14	21	23	23
Women	13	18	15	17	40	26	53	31	39	33
Total	12,191	13,167	13,472	14,008	14,576	15,185	16,017	16,666	17,849	18,152

Data Source (years prior to 2021): Integrated Postsecondary Education Data System (IPEDS). Data Source (2021): campus preliminary reports.

2019-20
Bachelor's Degrees
UA:
7,429
Top 10
Program Areas

52 Business, Management, Marketing, and Related Support Services (2,168; 29%)	14 Engineering (976; 13%)	09 Communication, Journalism, and Related Programs (692; 9%)	19 Family and Consumer Sciences/ Human Sciences (560; 8%)	45 Social Scien. (305; 4%)	42 Psych. (287; 4%)	Other (849; 11%)
		51 Health Professions and Related Programs (686; 9%)	13 Education (448; 6%)	26 Biol. and Biom. Scien. (283; 4%)	43 Ho... Sec. (175; 2%)	

Bachelor's Degrees by 2-Digit CIP Code by Race: UA

	American Indian	Asian	African American	Hispanic	Pacific Islander	Nonresident alien	White	Two or more races	Unknown	Total
03 Natural Resources and Conservation		1		2			35		1	39
05 Area, Ethnic, Cultural, Gender, and Group Studies			5	1			14	1		21
09 Communication, Journalism, and Related Programs	1	3	77	38	3	2	542	22	4	692
11 Computer and Information Sciences and Support Services		5	6	2		7	79	5		104
13 Education	4	1	64	24		3	337	15		448
14 Engineering	2	16	40	33		90	767	21	7	976
16 Foreign Languages, Literatures, and Linguistics		1	1	4			32	3		41
19 Family and Consumer Sciences/Human Sciences	3	5	74	27	1	7	424	16	3	560
23 English Language and Literature/Letters		1	5	5			82	2	1	96
26 Biological and Biomedical Sciences	1	2	21	15		3	228	12	1	283
27 Mathematics and Statistics		2	4	3		1	48	1		59
30 Multi/Interdisciplinary Studies		3	20	4			89	7	1	124
38 Philosophy and Religious Studies			2	1			7			10
40 Physical Sciences		1	2	4		2	62	3		74
42 Psychology	2	5	37	19	1	3	206	12	2	287
43 Homeland Security, Law Enforcement, Firefighting and Related Services	1	1	38	12			114	9		175
44 Public Administration and Social Service Professions		2	14	2	1		38	2		59
45 Social Sciences	1	3	29	21	1		237	9	4	305
50 Visual and Performing Arts		2	21	8			133	3	1	168
51 Health Professions and Related Programs	4	7	84	38	1	4	523	19	6	686
52 Business, Management, Marketing, and Related Support Services	8	26	136	107	3	43	1,794	47	4	2,168
54 History		1	3	2			48			54

Source: Integrated Postsecondary Education Data System (IPEDS)

2019-20
Bachelor's Degrees
UAB:
2,680
Top 10
Program Areas

51 Health Professions and Related Programs (652; 24%)	52 Business, Management, Marketing, and Related Support Services (476; 18%)	26 Biological and Biomedical Sciences (267; 10%)	13 Education (159; 6%)	43 Homeland Security (118; 4%)	24 Liberal Arts and Sciences (106; 4%)	Other (357; 14%)
		42 Psychology (199; 7%)	14 Engineering (152; 6%)	09 Communication, Journalism, and Related Programs (89; 3%)	45 Social Sciences (85; 3%)	

Bachelor's Degrees by 2-Digit CIP Code by Race: UAB

	American Indian	Asian	African American	Hispanic	Pacific Islander	Nonresident alien	White	Two or more races	Unknown	Total
05 Area, Ethnic, Cultural, Gender, and Group Studies			6							6
09 Communication, Journalism, and Related Programs		4	30	4		1	46	3	1	89
11 Computer and Information Sciences and Support Services		10	8	5		1	44	2	1	71
13 Education		6	47	6		3	87	10		159
14 Engineering		14	21	8		3	99	4	3	152
16 Foreign Languages, Literatures, and Linguistics		1	1	6			8			16
23 English Language and Literature/Letters		1	2	2			34	1		40
24 Liberal Arts and Sciences		2	32	4		3	59	5	1	106
26 Biological and Biomedical Sciences	1	61	39	10		8	132	15	1	267
27 Mathematics and Statistics		5	8	2		1	21	1		38
38 Philosophy and Religious Studies		2	1	2			10			15
40 Physical Sciences		8	7	2		1	21	1		40
42 Psychology		12	51	13		2	111	9	1	199
43 Homeland Security, Law Enforcement, Firefighting and Related Protective Services	1	2	33	8		4	66	4		118
44 Public Administration and Social Service Professions			16	2			35	2		55
45 Social Sciences	1	4	17	6		1	49	7		85
50 Visual and Performing Arts		4	13	2		1	53	2	1	76
51 Health Professions and Related Programs	2	39	168	27		4	385	25	2	652
52 Business, Management, Marketing, and Related Support Services	4	23	82	20		17	314	15	1	476
54 History			5			1	13	1		20

Source: Integrated Postsecondary Education Data System (IPEDS)

2019-20
Bachelor's Degrees
UAH:
1,470
Top 10
Program Areas

14 Engineering (423; 29%)	52 Business, Management, Marketing, and Related Support Services (257; 17%)	51 Health Professions and Related Programs (242; 16%)	11 Computer and Information Sciences and Support...	40 Physical Sciences (69; 5%)	50 Vis. and Perf. Arts (54; 4%)	Other (138; 9%)
			26 Biological and Biomedical Sciences (88; 6%)	31 Parks, Recr... (37; 3%)	42 Psych. (32; 2%)	
					23 Engl. (31; 2%)	

Bachelor's Degrees by 2-Digit CIP Code by Race: UAH

	American Indian	Asian	African American	Hispanic	Pacific Islander	Nonresident alien	White	Two or more races	Unknown	Total
09 Communication, Journalism, and Related Programs		1	6			1	15			23
11 Computer and Information Sciences and Support Services	2	7	2	2		1	81	1	3	99
13 Education		2		1			20			23
14 Engineering	7	21	15	22	1	18	319	7	13	423
16 Foreign Languages, Literatures, and Linguistics				1			5		2	8
23 English Language and Literature/Letters		1	1	1			26		2	31
26 Biological and Biomedical Sciences	2	3	7	1		1	70	1	3	88
27 Mathematics and Statistics		1	1	1			18			21
30 Multi/Interdisciplinary Studies			4				17			21
31 Parks, Recreation, Leisure, Fitness, and Kinesiology			5	2	1	1	23	3	2	37
38 Philosophy and Religious Studies			1			1	6			8
40 Physical Sciences	1	2	3	3		4	52	4		69
42 Psychology			8	1			19	3	1	32
45 Social Sciences			2	1			11			14
50 Visual and Performing Arts	2	4	3	3		1	37	3	1	54
51 Health Professions and Related Programs	4	7	18	9		1	182	5	16	242
52 Business, Management, Marketing, and Related Support Services	4	11	23	20		6	182	6	5	257
54 History	1					1	18			20

Source: Integrated Postsecondary Education Data System (IPEDS)

UAS Data Summary, April 2021

2019-20
Bachelor's Degrees
UAS:
11,579
Top 10
Program Areas

52 Business, Management, Marketing, and Related Support Services (2,901; 25%)	51 Health Professions and Related Programs (1,580; 14%)	14 Engineering (1,551; 13%)	09 Communication, Journalism, and Related Programs (630; 5%)	13 Education (630; 5%)	19 Family and Consumer Sciences (560; 5%)	Other (1,695; 15%)
			26 Biological and Biomedical Sciences (630; 5%)	42 Psychology (518; 4%)	45 Social Sciences (404; 3%)	50 Visual and Performing Arts (115; 1%)

Bachelor's Degrees by 2-Digit CIP Code by Race: UAS

	American Indian	Asian	African American	Hispanic	Pacific Islander	Nonresident alien	White	Two or more races	Unknown	Total
03 Natural Resources and Conservation		1		2			35		1	39
05 Area, Ethnic, Cultural, Gender, and Group Studies			11	1			14	1		27
09 Communication, Journalism, and Related Programs	1	8	113	42	3	4	603	25	5	804
11 Computer and Information Sciences and Support Services	2	22	16	9		9	204	8	4	274
13 Education	4	9	111	31		6	444	25		630
14 Engineering	9	51	76	63	1	111	1,185	32	23	1,551
16 Foreign Languages, Literatures, and Linguistics		2	2	11			45	3	2	65
19 Family and Consumer Sciences/Human Sciences	3	5	74	27	1	7	424	16	3	560
23 English Language and Literature/Letters		3	8	8			142	3	3	167
24 Liberal Arts and Sciences		2	32	4		3	59	5	1	106
26 Biological and Biomedical Sciences	4	66	67	26		12	430	28	5	638
27 Mathematics and Statistics		8	13	6		2	87	2		118
30 Multi/Interdisciplinary Studies		3	24	4			106	7	1	145
31 Parks, Recreation, Leisure, Fitness, and Kinesiology			5	2	1	1	23	3	2	37
38 Philosophy and Religious Studies		2	4	3		1	23			33
40 Physical Sciences	1	11	12	9		7	135	8		183
42 Psychology	2	17	96	33	1	5	336	24	4	518
43 Homeland Security, Law Enforcement, Firefighting and Related Protective Services	2	3	71	20		4	180	13		293
44 Public Administration and Social Service Professions		2	30	4	1		73	4		114
45 Social Sciences	2	7	48	28	1	1	297	16	4	404
50 Visual and Performing Arts	2	10	37	13		2	223	8	3	298
51 Health Professions and Related Programs	10	53	270	74	1	9	1,090	49	24	1,580
52 Business, Management, Marketing, and Related Support Services	16	60	241	147	3	66	2,290	68	10	2,901
54 History	1	1	8	2		2	79	1		94

Source: Integrated Postsecondary Education Data System (IPEDS)

2019-20
Master's Degrees
UA:
1,831
Top 10
Program Areas

05 Area, Ethnic, Cultural, Gender, and Group Studies (433; 24%)	09 Communication, Journalism, and Related Programs (260; 14%)	11 Computer and Information Sciences and Support Services (212; 12%)	13 Education (172; 9%)	16 Foreign Languages, Literatures, & Linguist. (109; 6%)	19 Family and Cons. Sciences (92; 5%)	22 Legal Professions and Studies (84; 5%)	23 Engl. Lang. (43; 2%)	25 Libr. Scien. (43; 2%)	Other (218; 12%)
---	---	--	------------------------	--	---------------------------------------	---	-------------------------	--------------------------	------------------

Master's Degrees by 2-Digit CIP Code by Race: UA

	American Indian	Asian	African American	Hispanic	Pacific Islander	Nonresident alien	White	Two or more races	Unknown	Total
09 Communication, Journalism, and Related Programs			5			1	6	2		14
11 Computer and Information Sciences and Support Services			12	1		3	67	1		84
13 Education				1		5	4	1		11
14 Engineering		1	12	8	1	20	116	6	1	165
16 Foreign Languages, Literatures, and Linguistics		1	1	6		18	78	4	1	109
19 Family and Consumer Sciences/Human Sciences			1	2		3	5	1		12
22 Legal Professions and Studies		4	16	14	1	2	170	2	3	212
23 English Language and Literature/Letters	1		5	6	1		28	1	1	43
25 Library Science			4	3		1	17	1	1	27
26 Biological and Biomedical Sciences			5	1		1	77	3	5	92
27 Mathematics and Statistics						1	12	1		14
38 Philosophy and Religious Studies		1	4	2		2	13	1		23
40 Physical Sciences							4			4
42 Psychology		1	1	3		17	18	1		41
43 Homeland Security, Law Enforcement, Firefighting, and Related Services		1	6	4		1	29	1	1	43
44 Public Administration and Social Service Professions						1	1			2
45 Social Sciences	3	2	78	10		2	163	2		260
50 Visual and Performing Arts		1	1	2		3	22	2	1	32
51 Health Professions and Related Programs		1	2	2		3	21	1		30
52 Business, Management, Marketing, and Related Support Services	1	3	34	3			128	1	2	172
54 History	2	6	20	13	1	11	367	8	5	433
HISTORY						1	7			8

Source: Integrated Postsecondary Education Data System (IPEDS)

2019-20
Master's Degrees
UAB:
2,332
Top 10
Program Areas

51 Health Professions and Related Programs (1,193; 51%)	52 Business, Management, Marketing, and Related Support Services (402; 17%)	13 Education (224; 10%)		26 Biological and Biomed. Sciences (106; 5%)	
		14 Engineering (202; 9%)		11 Comp. Scie...	44 Publ. Ad...
				45 Soc. Sci...	09 C... (2...)

Master's Degrees by 2-Digit CIP Code by Race: UAB

	American Indian	Asian	African American	Hispanic	Pacific Islander	Nonresident alien	White	Two or more races	Unknown	Total
09 Communication, Journalism, and Related Programs			6	1		3	10	1	1	22
11 Computer and Information Sciences and Support Services		1	2	1		25	11			40
13 Education		2	53	5		8	147	5	4	224
14 Engineering		7	24	6		58	100	1	6	202
23 English Language and Literature/Letters							6		1	7
26 Biological and Biomedical Sciences		7	40	1	1	17	34	4	2	106
27 Mathematics and Statistics			1			3	6		1	11
30 Multi/Interdisciplinary Studies			3			6	4			13
40 Physical Sciences						6	5	1		12
42 Psychology				1			8			9
43 Homeland Security, Law Enforcement, Firefighting and Related Protective Services			5	1			14			20
44 Public Administration and Social Service Professions			12			3	19	1	1	36
45 Social Sciences			4			1	21		2	28
50 Visual and Performing Arts						1				1
51 Health Professions and Related Programs	1	50	162	35	2	50	838	26	29	1,193
52 Business, Management, Marketing, and Related Support Services		28	63	10		48	240	5	8	402
54 History							6			6

Source: Integrated Postsecondary Education Data System (IPEDS)

2019-20
Master's Degrees
UAH:
647
Top 10
Program Areas

52 Business, Management, Marketing, and Related Support Services (163; 25%)	51 Health Professions and Related Programs (162; 25%)	14 Engineering (129; 20%)	11 Computer and Information Sciences and Support Services (69; 11%)	40 Physical Sciences (30; 5%)	13 Educa... (28; 4%)	Ot... (23; 4%)
				09 Co... (14; 2%)	42 Psych. (11;...)	26 Biol... and...
					54 History (8;...	

Master's Degrees by 2-Digit CIP Code by Race: UAH

	American Indian	Asian	African American	Hispanic	Pacific Islander	Nonresident alien	White	Two or more races	Unknown	Total
09 Communication, Journalism, and Related Programs			3	1		1	9			14
11 Computer and Information Sciences and Support Services		2	4	1		22	37		3	69
13 Education	1		5				21	1		28
14 Engineering	1	7	4	5		23	83	1	5	129
23 English Language and Literature/Letters			1				5		1	7
26 Biological and Biomedical Sciences						2	8			10
27 Mathematics and Statistics		1				2	3			6
30 Multi/Interdisciplinary Studies						2	4	1		7
40 Physical Sciences			1			6	23			30
42 Psychology			1			1	7	1	1	11
44 Public Administration and Social Service Professions				1			2			3
51 Health Professions and Related Programs	4	3	14	4		2	127		8	162
52 Business, Management, Marketing, and Related Support Services	1	7	16	9		15	99	1	15	163
54 History							8			8

Source: Integrated Postsecondary Education Data System (IPEDS)

2019-20
Master's Degrees
UAS:
4,810
Top 10
Program Areas

51 Health Professions and Related Programs (1,527; 32%)	52 Business, Management, Marketing, and Related Support Services (998; 21%)	14 Engineering (440; 9%)	44 Public Administration and Social Service Professions...		19 Family and Consumer Sciences/Human...	Other (455; 9%)
		13 Education (417; 9%)	26 Biol. and Bio... Scie...	09 Co... Jour... and Rela...	11 Computer... 25 Library...	

Master's Degrees by 2-Digit CIP Code by Race: UAS

	American Indian	Asian	African American	Hispanic	Pacific Islander	Nonresident alien	White	Two or more races	Unknown	Total
05 Area, Ethnic, Cultural, Gender, and Group Studies			5			1	6	2		14
09 Communication, Journalism, and Related Programs			21	3		7	86	2	1	120
11 Computer and Information Sciences and Support Services		3	6	3		52	52	1	3	120
13 Education	1	3	70	13	1	28	284	12	5	417
14 Engineering	1	15	29	17		99	261	6	12	440
16 Foreign Languages, Literatures, and Linguistics			1	2		3	5	1		12
19 Family and Consumer Sciences/Human Sciences		4	16	14	1	2	170	2	3	212
22 Legal Professions and Studies	1		5	6	1		28	1	1	43
23 English Language and Literature/Letters			5	3		1	28	1	3	41
25 Library Science			5	1		1	77	3	5	92
26 Biological and Biomedical Sciences		7	40	1	1	20	54	5	2	130
27 Mathematics and Statistics		2	5	2		7	22	1	1	40
30 Multi/Interdisciplinary Studies			3			8	8	1		20
38 Philosophy and Religious Studies							4			4
40 Physical Sciences		1	2	3		29	46	2		83
42 Psychology		1	7	5		2	44	2	2	63
43 Homeland Security, Law Enforcement, Firefighting and Related Services			5	1		1	15			22
44 Public Administration and Social Service Professions	3	2	90	11		5	184	3	1	299
45 Social Sciences		1	5	2		4	43	2	3	60
50 Visual and Performing Arts		1	2	2		4	21	1		31
51 Health Professions and Related Programs	6	56	210	42	2	52	1,093	27	39	1,527
52 Business, Management, Marketing, and Related Support Services	3	41	99	32	1	74	706	14	28	998
54 History						1	21			22

Source: Integrated Postsecondary Education Data System (IPEDS)

2019-20
Doctor's Degrees
UA:
383
Top 10
Program Areas

22 Legal Professions and Studies (130; 34%)	51 Health Professions and Related Programs (64; 17%)	13 Education (40; 10%)	40 Physical Sciences (28; 7%)	52 Business, Manage... Marketing (18; 5%)	42 Psycho... (17; 4%)	Other (35; 9%)
			14 Engineering (23; 6%)	23 English Langu... (11; 3%)	50 Vis. and Perf. Arts... (8; 2%)	

Doctor's Degrees by 2-Digit CIP Code by Race: UA

	American Indian	Asian	African American	Hispanic	Pacific Islander	Nonresident alien	White	Two or more races	Unknown	Total
09 Communication, Journalism, and Related Programs						4	4			8
11 Computer and Information Sciences and Support Services						3				3
13 Education			8		1	1	29	1		40
14 Engineering						17	6			23
16 Foreign Languages, Literatures, and Linguistics			1			3	2			6
22 Legal Professions and Studies		2	11	6		4	104	1	2	130
23 English Language and Literature/Letters			2				9			11
26 Biological and Biomedical Sciences						1		1		2
27 Mathematics and Statistics						3	1			4
30 Multi/Interdisciplinary Studies			2							2
31 Parks, Recreation, Leisure, Fitness, and Kinesiology				1		1	5			7
40 Physical Sciences			2	2		16	7	1		28
42 Psychology		2	1	2			12			17
44 Public Administration and Social Service Professions							4			4
45 Social Sciences						1	5			6
50 Visual and Performing Arts	1			2		1	5			9
51 Health Professions and Related Programs	1	1	24	3			32		3	64
52 Business, Management, Marketing, and Related Support Services			1	1		8	6	2		18
54 History							1			1

Source: Integrated Postsecondary Education Data System (IPEDS)

2019-20
Doctor's Degrees
UAB:
618
Top 5
Program Areas

51 Health Professions and Related Programs (485; 78%)	26 Biological and Biomedical Sciences (58; 9%)		Ot... (30; 5%)
	14 Engine... (22; 4%)	42 Psycholo...	
		31 Parks, Recreation...	

Doctor's Degrees by 2-Digit CIP Code by Race: UAB

	American Indian	Asian	African American	Hispanic	Pacific Islander	Nonresident alien	White	Two or more races	Unknown	Total
11 Computer and Information Sciences and Support Services						2	1			3
13 Education			1			1	2	2		6
14 Engineering			1	1		11	8	1		22
26 Biological and Biomedical Sciences		2	3	5		9	37	2		58
27 Mathematics and Statistics						2				2
30 Multi/Interdisciplinary Studies			3			1	2			6
31 Parks, Recreation, Leisure, Fitness, and Kinesiology			4	1			6			11
40 Physical Sciences		2				4	5			11
42 Psychology			1			1	9	1		12
45 Social Sciences						1	1			2
51 Health Professions and Related Programs	1	54	30	10		8	359	14	9	485

Source: Integrated Postsecondary Education Data System (IPEDS)

2019-20
Doctor's Degrees
UAH:
91
Top 5
Program Areas

51 Health Professions and Related Programs (41; 45%)	14 Engineering (30; 33%)	11 Computer and Information Sciences (8; 9%)	40 Physical Sciences (8; 9%)
		26 Biological and Biomedical...	

Doctor's Degrees by 2-Digit CIP Code by Race: UAH

	American Indian	Asian	African American	Hispanic	Pacific Islander	Nonresident alien	White	Two or more races	Unknown	Total
11 Computer and Information Sciences and Support Services		1	1			2	4			8
14 Engineering		2				15	13			30
26 Biological and Biomedical Sciences			1				3			4
40 Physical Sciences						2	6			8
51 Health Professions and Related Programs		1	9	1		1	21		8	41

Source: Integrated Postsecondary Education Data System (IPEDS)

2019-20
Doctor's Degrees
UAS:
1,092
Top 10
Program Areas

51 Health Professions and Related Programs (590; 54%)	22 Legal Professions and Studies (130; 12%)	14 Engineering (75; 7%)	40 Physical Sciences (47; 4%)	13 Educat... (46; 4%)		Other (61; 6%)
		26 Biological and Biomedical Sciences (64; ...)	42 Psyc... (29; 3%)	31 Parks, Recr... Leis...	52 Busi... Man... Mar...	
				11 Computer...		

Doctor's Degrees by 2-Digit CIP Code by Race: UAS

	American Indian	Asian	African American	Hispanic	Pacific Islander	Nonresident alien	White	Two or more races	Unknown	Total
09 Communication, Journalism, and Related Programs						4	4			8
11 Computer and Information Sciences and Support Services		1	1			7	5			14
13 Education			9		1	2	31	3		46
14 Engineering		2	1	1		43	27	1		75
16 Foreign Languages, Literatures, and Linguistics			1			3	2			6
22 Legal Professions and Studies		2	11	6		4	104	1	2	130
23 English Language and Literature/Letters			2				9			11
26 Biological and Biomedical Sciences		2	4	5		10	40	3		64
27 Mathematics and Statistics						5	1			6
30 Multi/Interdisciplinary Studies			5			1	2			8
31 Parks, Recreation, Leisure, Fitness, and Kinesiology			4	2		1	11			18
40 Physical Sciences		2	2	2		22	18	1		47
42 Psychology		2	2	2		1	21	1		29
44 Public Administration and Social Service Professions							4			4
45 Social Sciences						2	6			8
50 Visual and Performing Arts	1			2		1	5			9
51 Health Professions and Related Programs	2	56	63	14		9	412	14	20	590
52 Business, Management, Marketing, and Related Support Services			1	1		8	6	2		18
54 History							1			1

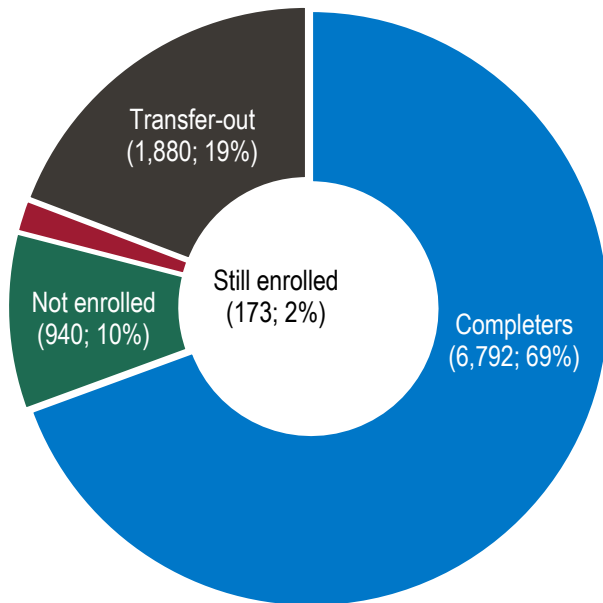
Source: Integrated Postsecondary Education Data System (IPEDS)



Six-year Graduation Rates and Completion Status

Six-year graduation rate

69%

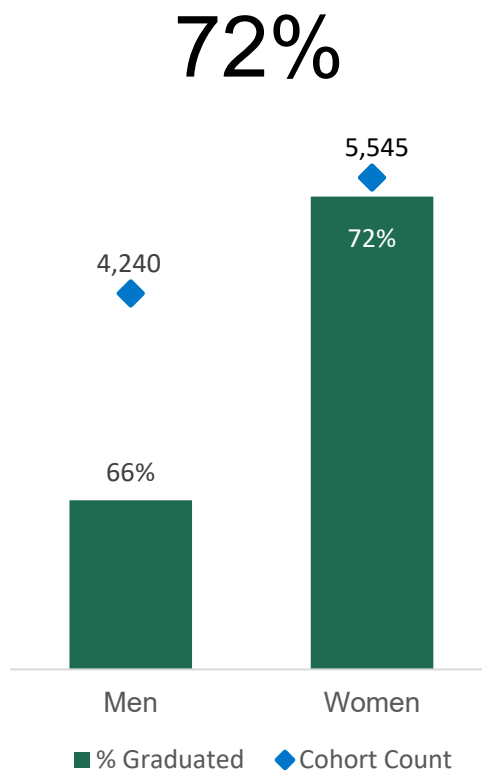


Reporting Year	2012	2013	2014	2015	2016	2017	2018	2019	2020	2021
Adjusted Cohort	2006	2007	2008	2009	2010	2011	2012	2013	2014	2015
UA	4,275	4,438	5,009	5,062	5,443	5,665	6,302	6,385	6,791	7,169
Completers	2,845	2,958	3,289	3,396	3,740	3,845	4,530	4,540	4,899	5,178
No longer enrolled	381	382	421	423	444	464	488	480	467	554
Still enrolled	120	117	121	122	114	131	101	98	89	88
Transfer-out	929	981	1,178	1,121	1,145	1,225	1,183	1,267	1,336	1,349
Graduation rate	67%	67%	66%	67%	69%	68%	72%	71%	72%	72%
UAB	1,485	1,378	1,246	1,494	1,537	1,576	1,652	1,727	1,714	1,590
Completers	715	741	692	816	816	834	963	1,095	1,048	991
No longer enrolled	253	251	198	251	268	28	254	245	261	264
Still enrolled	86	61	56	65	79	278	66	52	58	51
Transfer-out	431	325	300	362	374	436	369	335	347	284
Graduation rate	48%	54%	56%	55%	53%	53%	58%	63%	61%	62%
UAH	801	759	765	774	600	652	615	638	714	1,026
Completers	379	367	353	382	292	317	319	368	408	623
No longer enrolled	176	102	95	97	100	112	74	83	109	122
Still enrolled	0	52	51	49	29	37	40	25	42	34
Transfer-out	246	238	266	246	179	186	182	162	155	247
Graduation rate	47%	48%	46%	49%	49%	49%	52%	58%	57%	61%
UAS	6,561	6,575	7,020	7,330	7,580	7,893	8,569	8,750	9,219	9,785
Completers	3,939	4,066	4,334	4,594	4,848	4,996	5,812	6,003	6,355	6,792
No longer enrolled	810	735	714	771	812	604	816	808	837	940
Still enrolled	206	230	228	236	222	446	207	175	189	173
Transfer-out	1,606	1,544	1,744	1,729	1,698	1,847	1,734	1,764	1,838	1,880
Graduation rate	60%	62%	62%	63%	64%	63%	68%	69%	69%	69%

Data Source (years prior to 2021): Integrated Postsecondary Education Data System (IPEDS). Data Source (2021): campus preliminary reports.



Women, Six-year Graduation Rate



Six-year Graduation Rates by Gender

Reporting Year	2012	2013	2014	2015	2016	2017	2018	2019	2020	2021
Adjusted Cohort	2006	2007	2008	2009	2010	2011	2012	2013	2014	2015
UA	4,275	4,438	5,009	5,062	5,443	5,665	6,302	6,385	6,791	7,169
Men	1,898	1,977	2,233	2,316	2,437	2,526	2,783	2,795	2,919	3,000
% Graduated	64%	63%	62%	63%	64%	65%	69%	68%	70%	70%
Women	2,377	2,461	2,776	2,746	3,006	3,139	3,519	3,590	3,872	4,169
% Graduated	69%	69%	69%	71%	73%	71%	74%	73%	74%	74%
UAB	1,485	1,378	1,246	1,494	1,537	1,576	1,652	1,727	1,714	1,590
Men	590	571	536	675	686	686	707	694	731	625
% Graduated	47%	48%	49%	50%	48%	45%	52%	59%	56%	58%
Women	895	807	710	819	851	890	945	1,033	983	965
% Graduated	49%	58%	61%	58%	58%	59%	63%	66%	65%	65%
UAH	801	759	765	774	600	652	615	638	714	1,026
Men	432	402	417	416	350	384	337	387	437	615
% Graduated	43%	43%	43%	48%	45%	45%	48%	55%	55%	56%
Women	369	357	348	358	250	268	278	251	277	411
% Graduated	52%	54%	50%	51%	54%	53%	56%	61%	60%	68%
UAS	6,561	6,575	7,020	7,330	7,580	7,893	8,569	8,750	9,219	9,785
Men	2,920	2,950	3,186	3,407	3,473	3,596	3,827	3,876	4,087	4,240
% Graduated	57%	57%	57%	59%	59%	59%	64%	65%	66%	66%
Women	3,641	3,625	3,834	3,923	4,107	4,297	4,742	4,874	5,132	5,545
% Graduated	62%	65%	65%	66%	68%	67%	71%	71%	71%	72%

Data Source (years prior to 2021): Integrated Postsecondary Education Data System (IPEDS). Data Source (2021) : campus preliminary reports.

UA, Six-year Graduation Rate

72%

Asian, 79%

White, 75%

Nonresident alien,
74%

Race/ethnicity unknown,
67%

Two or more races,
66%

Hispanic, 66%

Native Hawaiian or Other
Pacific Isl., 63%

American Indian or Alaska
Native, 62%

Black or African
American, 57%

UA: Six-year Graduation Rates by Race/Ethnicity

Reporting Year	2012	2013	2014	2015	2016	2017	2018	2019	2020	2021
Adjusted Cohort	2006	2007	2008	2009	2010	2011	2012	2013	2014	2015
# Students in cohort	4,275	4,438	5,009	5,062	5,443	5,665	6,302	6,385	6,791	7,169
American Indian or Alaska Native	33	20	23	34	24	29	14	29	21	29
Asian	42	51	66	72	67	58	70	75	65	91
Black or African American	371	378	507	550	645	677	575	601	570	701
Hispanic	158	76	106	135	197	146	239	237	285	354
Native Hawaiian or Other Pacific Isl.	0	0	0	0	8	4	8	6	4	8
Nonresident alien	29	23	27	50	59	133	201	161	93	93
Race/ethnicity unknown	33	0	0	0	20	1	13	0	10	27
Two or more races	0	0	0	0	91	124	162	174	248	191
White	3,609	3,890	4,280	4,221	4,332	4,493	5,020	5,102	5,495	5,675
# Completers	2,845	2,958	3,289	3,396	3,740	3,845	4,530	4,540	4,899	5,178
American Indian or Alaska Native	20	15	13	18	14	20	10	21	11	18
Asian	27	36	39	49	49	37	52	57	47	72
Black or African American	218	214	305	300	360	365	339	340	351	397
Hispanic	119	55	67	80	116	79	151	155	190	234
Native Hawaiian or Other Pacific Isl.	0	0	0	0	6	3	6	4	3	5
Nonresident alien	19	15	18	39	44	97	160	112	65	69
Race/ethnicity unknown	21	0	0	0	11	1	10	0	9	18
Two or more races	0	0	0	0	56	75	99	124	159	127
White	2,421	2,623	2,847	2,910	3,084	3,168	3,703	3,727	4,064	4,238
Graduation Rates	67%	67%	66%	67%	69%	68%	72%	71%	72%	72%
American Indian or Alaska Native	61%	75%	57%	53%	58%	69%	71%	72%	52%	62%
Asian	64%	71%	59%	68%	73%	64%	74%	76%	72%	79%
Black or African American	59%	57%	60%	55%	56%	54%	59%	57%	62%	57%
Hispanic	75%	72%	63%	59%	59%	54%	63%	65%	67%	66%
Native Hawaiian or Other Pacific Isl.					75%	75%	75%	67%	75%	63%
Nonresident alien	66%	65%	67%	78%	75%	73%	80%	70%	70%	74%
Race/ethnicity unknown	64%				55%	100%	77%		90%	67%
Two or more races					62%	60%	61%	71%	64%	66%
White	67%	67%	67%	69%	71%	71%	74%	73%	74%	75%

Data Source (years prior to 2021): Integrated Postsecondary Education Data System (IPEDS). Data Source (2021) : campus preliminary reports.

62%

Race/ethnicity unknown,
100%

Asian, 83%

White, 63%

Nonresident
alien, 60%

American Indian or...

Hispanic, 57%

Black or African
American, 55%Two or more
races, 50%

UAB: Six-year Graduation Rates by Race/Ethnicity

Reporting Year	2012	2013	2014	2015	2016	2017	2018	2019	2020	2021
Adjusted Cohort	2006	2007	2008	2009	2010	2011	2012	2013	2014	2015
# Students in cohort	1,485	1,378	1,246	1,494	1,537	1,576	1,652	1,727	1,714	1,590
American Indian or Alaska Native	6	3	8	12	3	4	8	3	3	5
Asian	88	75	70	79	107	108	109	142	131	159
Black or African American	411	349	272	358	402	381	373	384	449	354
Hispanic	15	27	28	37	28	36	50	40	42	51
Native Hawaiian or Other Pacific Isl.	0	0	1	1	2	1	1	0	0	0
Nonresident alien	20	23	18	16	12	22	17	18	30	20
Race/ethnicity unknown	24	36	53	41	12	11	8	16	5	2
Two or more races	16	30	6	18	50	72	65	75	89	78
White	905	835	790	932	921	941	1,021	1,049	965	921
# Completers	715	741	692	816	816	834	963	1,095	1,048	991
American Indian or Alaska Native	2	2	3	6	1	2	4	0	2	3
Asian	68	51	50	61	76	76	86	120	97	132
Black or African American	145	181	142	169	197	181	196	214	266	196
Hispanic	9	17	17	22	12	20	31	27	30	29
Native Hawaiian or Other Pacific Isl.	0	0	1	1	2	1	1	0	0	0
Nonresident alien	12	15	13	11	7	13	13	15	18	12
Race/ethnicity unknown	7	15	25	17	7	5	4	12	3	2
Two or more races	12	19	6	13	29	32	39	44	48	39
White	460	441	435	516	485	504	589	663	584	578
Graduation Rates	48%	54%	56%	55%	53%	53%	58%	63%	61%	62%
American Indian or Alaska Native	33%	67%	38%	50%	33%	50%	50%	0%	67%	60%
Asian	77%	68%	71%	77%	71%	70%	79%	85%	74%	83%
Black or African American	35%	52%	52%	47%	49%	48%	53%	56%	59%	55%
Hispanic	60%	63%	61%	59%	43%	56%	62%	68%	71%	57%
Native Hawaiian or Other Pacific Isl.			100%	100%	100%	100%	100%			
Nonresident alien	60%	65%	72%	69%	58%	59%	76%	83%	60%	60%
Race/ethnicity unknown	29%	42%	47%	41%	58%	45%	50%	75%	60%	100%
Two or more races	75%	63%	100%	72%	58%	44%	60%	59%	54%	50%
White	51%	53%	55%	55%	53%	54%	58%	63%	61%	63%

Data Source (years prior to 2021): Integrated Postsecondary Education Data System (IPEDS). Data Source (2021): campus preliminary reports.

61%

Asian, 81%

Nonresident alien, 81%

 American Indian or
Alaska Native, 67%

Hispanic, 64%

White, 61%

 Two or more
races, 60%

 Black or African
American, 48%

 Race/ethnicity
unknown, 44%

UAH: Six-year Graduation Rates by Race/Ethnicity

Reporting Year	2012	2013	2014	2015	2016	2017	2018	2019	2020	2021
Adjusted Cohort	2006	2007	2008	2009	2010	2011	2012	2013	2014	2015
# Students in cohort	801	759	765	774	600	652	615	638	714	1,026
American Indian or Alaska Native	13	15	7	11	6	12	7	10	8	9
Asian	19	20	20	30	27	27	21	23	25	32
Black or African American	104	106	109	104	92	86	91	70	69	97
Hispanic	21	17	18	25	23	26	28	15	32	45
Native Hawaiian or Other Pacific Isl.	0	0	0	1	0	0	0	0	0	0
Nonresident alien	29	20	19	17	13	14	10	25	12	21
Race/ethnicity unknown	4	3	4	8	11	29	17	11	13	18
Two or more races	20	11	12	16	13	3	9	13	12	25
White	591	567	576	562	415	455	432	471	543	779
# Completers	379	367	353	382	292	317	319	368	408	623
American Indian or Alaska Native	8	10	3	4	2	5	3	5	6	6
Asian	10	13	13	16	19	16	13	15	11	26
Black or African American	34	50	33	37	32	25	36	30	33	47
Hispanic	9	6	9	7	8	10	16	5	17	29
Native Hawaiian or Other Pacific Isl.	0	0	0	1	0	0	0	0	0	0
Nonresident alien	22	15	10	11	3	8	5	15	10	17
Race/ethnicity unknown	2	2	2	6	5	16	10	9	9	8
Two or more races	6	7	7	7	5	2	2	4	5	15
White	288	264	276	293	218	235	234	285	317	475
Graduation Rates	47%	48%	46%	49%	49%	49%	52%	58%	57%	61%
American Indian or Alaska Native	62%	67%	43%	36%	33%	42%	43%	50%	75%	67%
Asian	53%	65%	65%	53%	70%	59%	62%	65%	44%	81%
Black or African American	33%	47%	30%	36%	35%	29%	40%	43%	48%	48%
Hispanic	43%	35%	50%	28%	35%	38%	57%	33%	53%	64%
Native Hawaiian or Other Pacific Isl.				100%						
Nonresident alien	76%	75%	53%	65%	23%	57%	50%	60%	83%	81%
Race/ethnicity unknown	50%	67%	50%	75%	45%	55%	59%	82%	69%	44%
Two or more races	30%	64%	58%	44%	38%	67%	22%	31%	42%	60%
White	49%	47%	48%	52%	53%	52%	54%	61%	58%	61%

Data Source (years prior to 2021): Integrated Postsecondary Education Data System (IPEDS). Data Source (2021): campus preliminary reports.

69%

Asian, 82%

Nonresident alien, 73%

White, 72%

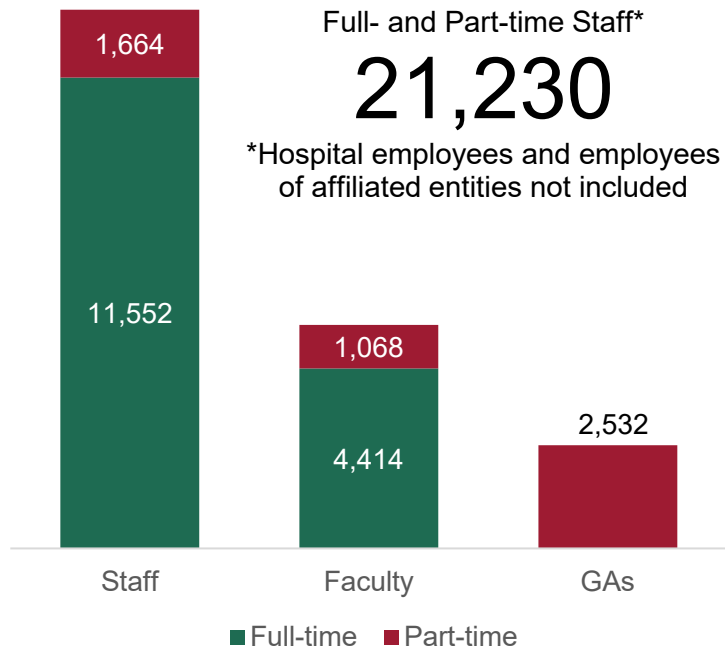
Hispanic, 65%

American Indian or Alaska
Native, 63%Native Hawaiian /
Pacific Isl., 63%Two or more races,
62%Race/ethnicity
unknown, 60%Black or African
American, 56%

UAS: Six-year Graduation Rates by Race/Ethnicity

Reporting Year	2012	2013	2014	2015	2016	2017	2018	2019	2020	2021
Adjusted Cohort	2006	2007	2008	2009	2010	2011	2012	2013	2014	2015
# Students in cohort	6,561	6,575	7,020	7,330	7,580	7,893	8,569	8,750	9,219	9,785
American Indian or Alaska Native	52	38	38	57	33	45	29	42	32	43
Asian	149	146	156	181	201	193	200	240	221	282
Black or African American	886	833	888	1,012	1,139	1,144	1,039	1,055	1,088	1,152
Hispanic	194	120	152	197	248	208	317	292	359	450
Native Hawaiian or Other Pacific Isl.	0	0	1	2	10	5	9	6	4	8
Nonresident alien	78	66	64	83	84	169	228	204	135	134
Race/ethnicity unknown	61	39	57	49	43	41	38	27	28	47
Two or more races	36	41	18	34	154	199	236	262	349	294
White	5,105	5,292	5,646	5,715	5,668	5,889	6,473	6,622	7,003	7,375
# Completers	3,939	4,066	4,334	4,594	4,848	4,996	5,812	6,003	6,355	6,792
American Indian or Alaska Native	30	27	19	28	17	27	17	26	19	27
Asian	105	100	102	126	144	129	151	192	155	230
Black or African American	397	445	480	506	589	571	571	584	650	640
Hispanic	137	78	93	109	136	109	198	187	237	292
Native Hawaiian or Other Pacific Isl.	0	0	1	2	8	4	7	4	3	5
Nonresident alien	53	45	41	61	54	118	178	142	93	98
Race/ethnicity unknown	30	17	27	23	23	22	24	21	21	28
Two or more races	18	26	13	20	90	109	140	172	212	181
White	3,169	3,328	3,558	3,719	3,787	3,907	4,526	4,675	4,965	5,291
Graduation Rates	60%	62%	62%	63%	64%	63%	68%	69%	69%	69%
American Indian or Alaska Native	58%	71%	50%	49%	52%	60%	59%	62%	59%	63%
Asian	70%	68%	65%	70%	72%	67%	76%	80%	70%	82%
Black or African American	45%	53%	54%	50%	52%	50%	55%	55%	60%	56%
Hispanic	71%	65%	61%	55%	55%	52%	62%	64%	66%	65%
Native Hawaiian or Other Pacific Isl.			100%	100%	80%	80%	78%	67%	75%	63%
Nonresident alien	68%	68%	64%	73%	64%	70%	78%	70%	69%	73%
Race/ethnicity unknown	49%	44%	47%	47%	53%	54%	63%	78%	75%	60%
Two or more races	50%	63%	72%	59%	58%	55%	59%	66%	61%	62%
White	62%	63%	63%	65%	67%	66%	70%	71%	71%	72%

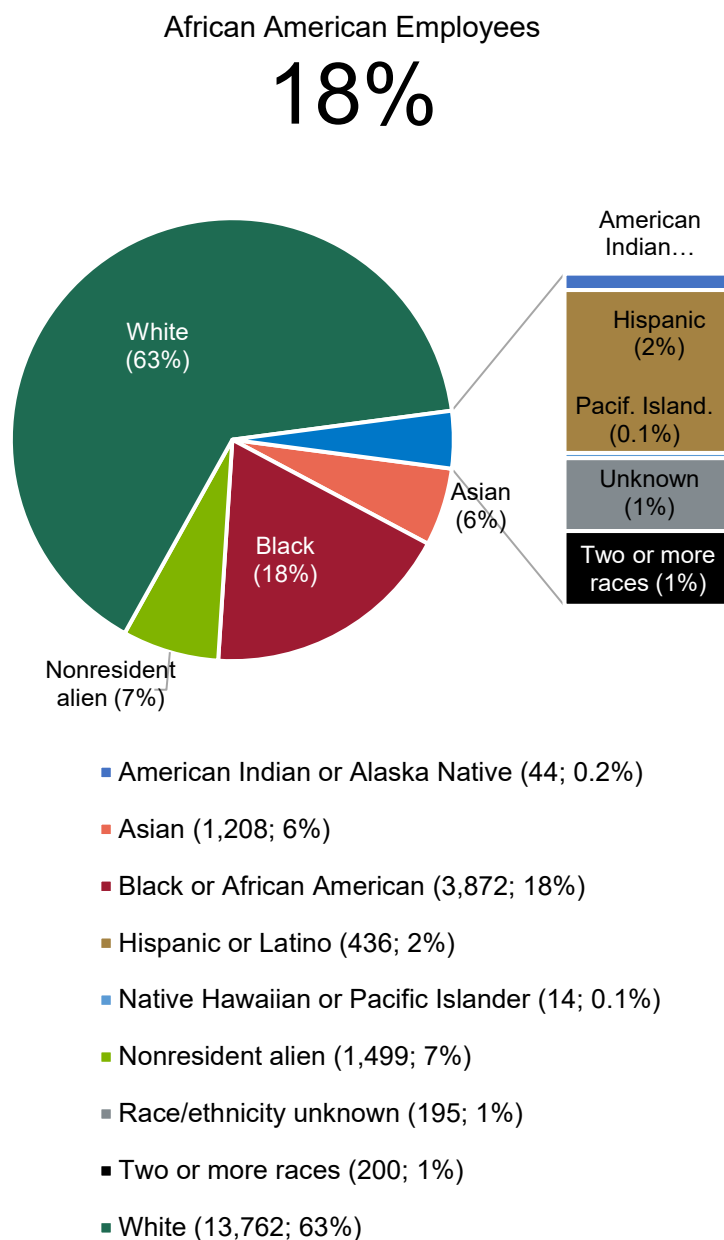
Data Source (years prior to 2021): Integrated Postsecondary Education Data System (IPEDS). Data Source (2021): campus preliminary reports.



Employees by Occupation and Status

	2014	2015	2016	2017	2018	2019	2020
UA	8,080	8,280	8,194	8,447	8,633	8,755	8,616
Faculty	1,847	1,867	1,884	1,957	2,009	2,027	1,986
Full-time	1,287	1,328	1,378	1,435	1,484	1,528	1,517
Part-time	560	539	506	522	525	499	469
Staff	4,579	4,774	4,781	4,935	5,031	5,083	4,934
Full-time	3,997	4,184	4,229	4,368	4,469	4,520	4,463
Part-time	582	590	552	567	562	563	471
GAs	1,654	1,639	1,529	1,555	1,593	1,645	1,696
Part-time	1,654	1,639	1,529	1,555	1,593	1,645	1,696
UAB	9,772	9,947	9,988	10,251	10,684	11,029	10,576
Faculty	2,392	2,458	2,503	2,563	2,829	2,917	2,958
Full-time	2,210	2,268	2,274	2,336	2,444	2,523	2,544
Part-time	182	190	229	227	385	394	414
Staff	6,819	6,927	6,980	7,175	7,402	7,662	7,135
Full-time	5,457	5,541	5,674	5,823	5,983	6,151	5,952
Part-time	1,362	1,386	1,306	1,352	1,419	1,511	1,183
GAs	561	562	505	513	453	450	483
Part-time	561	562	505	513	453	450	483
UAH	1,841	1,826	1,830	1,941	1,915	1,918	1,945
Faculty	479	520	513	549	544	578	538
Full-time	298	321	327	346	347	363	353
Part-time	181	199	186	203	197	215	185
Staff	1,052	1,001	989	1,008	1,013	1,031	1,054
Full-time	1,034	983	976	998	1,000	1,021	1,045
Part-time	18	18	13	10	13	10	9
GAs	310	305	328	384	358	309	353
Part-time	310	305	328	384	358	309	353
UAS	83	93	91	91	90	95	93
Staff	83	93	91	91	90	95	93
Full-time	81	90	89	89	85	92	92
Part-time	2	3	2	2	5	3	1
Total	19,776	20,146	20,103	20,730	21,322	21,797	21,230

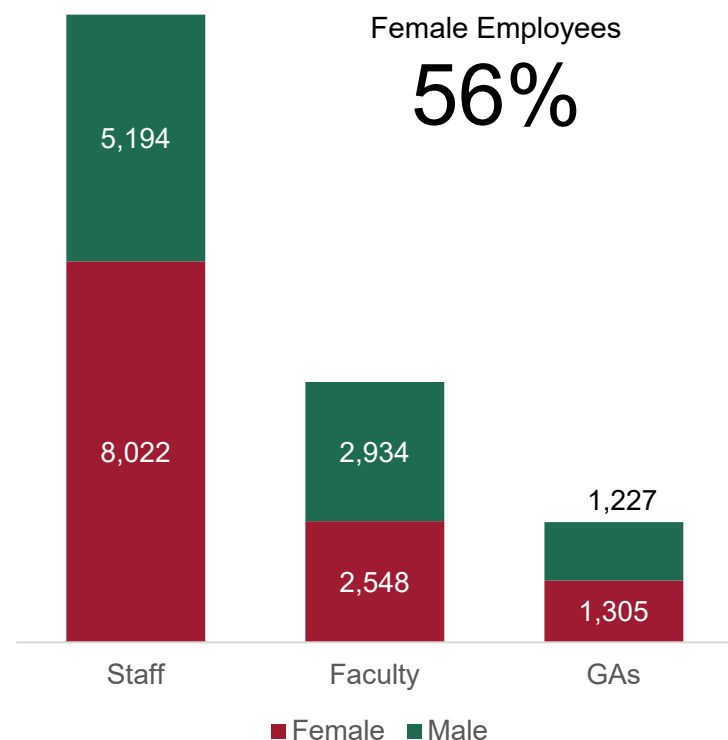
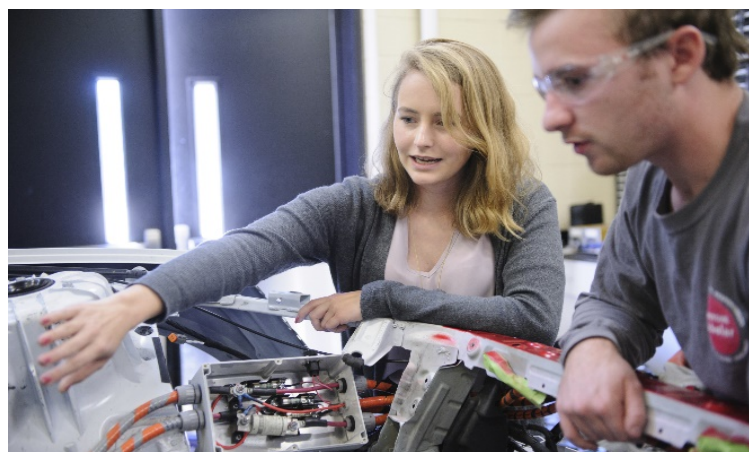
Source: Integrated Postsecondary Education Data System (IPEDS)



Employees by Race/Ethnicity

	2014	2015	2016	2017	2018	2019	2020
UA	8,080	8,280	8,194	8,447	8,633	8,755	8,616
American Indian or Alaska Native	11	12	13	19	20	14	14
Asian	191	190	170	189	212	241	237
Black or African American	1,180	1,229	1,221	1,284	1,326	1,330	1,285
Hispanic or Latino	129	152	159	164	174	190	204
Native Hawaiian or Pacific Islander	2	3	4	4	4	4	4
Nonresident alien	450	497	498	542	560	578	600
Race/ethnicity unknown	34	60	121	40	46	51	46
Two or more races	45	52	51	70	73	90	97
White	6,038	6,085	5,957	6,135	6,218	6,257	6,129
UAB	9,772	9,947	9,988	10,251	10,684	11,029	10,576
American Indian or Alaska Native	19	22	23	20	20	19	20
Asian	698	727	778	798	813	829	852
Black or African American	2,372	2,386	2,342	2,425	2,559	2,633	2,370
Hispanic or Latino	149	160	167	174	183	205	198
Native Hawaiian or Pacific Islander	13	9	7	11	11	13	10
Nonresident alien	522	549	537	611	667	702	720
Race/ethnicity unknown	4	6	14	27	59	93	108
Two or more races	60	67	70	71	88	102	97
White	5,935	6,021	6,050	6,114	6,284	6,433	6,201
UAH	1,841	1,826	1,830	1,941	1,915	1,918	1,945
American Indian or Alaska Native	9	10	17	12	10	9	10
Asian	90	96	87	101	106	110	116
Black or African American	184	182	177	203	200	205	203
Hispanic or Latino	20	23	19	27	22	30	34
Native Hawaiian or Pacific Islander	4	4	2	2	3	0	0
Nonresident alien	161	169	178	195	184	172	179
Race/ethnicity unknown	19	21	15	14	11	38	41
Two or more races	1	2	6	5	4	3	6
White	1,353	1,319	1,329	1,382	1,375	1,351	1,356
UAS	83	93	91	91	90	95	93
Asian	1	2	2	2	2	1	3
Black or African American	13	12	14	14	15	14	14
White	69	79	75	75	73	80	76
Total	19,776	20,146	20,103	20,730	21,322	21,797	21,230

Source: Integrated Postsecondary Education Data System (IPEDS)



Employees by Gender

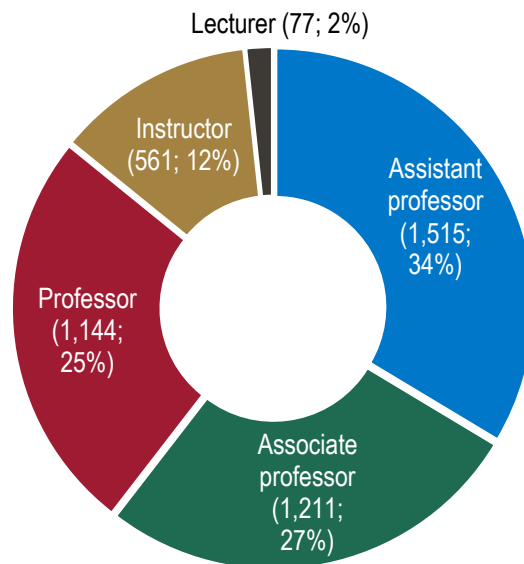
	2014	2015	2016	2017	2018	2019	2020
UA	8,080	8,280	8,194	8,447	8,633	8,755	8,616
Faculty	1,847	1,867	1,884	1,957	2,009	2,027	1,986
Female	854	852	897	947	961	974	954
Male	993	1,015	987	1,010	1,048	1,053	1,032
Staff	4,579	4,774	4,781	4,935	5,031	5,083	4,934
Female	2,676	2,770	2,774	2,854	2,893	2,957	2,872
Male	1,903	2,004	2,007	2,081	2,138	2,126	2,062
GAs	1,654	1,639	1,529	1,555	1,593	1,645	1,696
Female	829	819	766	765	810	876	917
Male	825	820	763	790	783	769	779
UAB	9,772	9,947	9,988	10,251	10,684	11,029	10,576
Faculty	2,392	2,458	2,503	2,563	2,829	2,917	2,958
Female	971	996	1,033	1,059	1,228	1,297	1,338
Male	1,421	1,462	1,470	1,504	1,601	1,620	1,620
Staff	6,819	6,927	6,980	7,175	7,402	7,662	7,135
Female	4,401	4,460	4,463	4,596	4,745	4,917	4,561
Male	2,418	2,467	2,517	2,579	2,657	2,745	2,574
GAs	561	562	505	513	453	450	483
Female	244	254	239	243	202	224	238
Male	317	308	266	270	251	226	245
UAH	1,841	1,826	1,830	1,941	1,915	1,918	1,945
Faculty	479	520	513	549	544	578	538
Female	202	238	243	267	268	287	256
Male	277	282	270	282	276	291	282
Staff	1,052	1,001	989	1,008	1,013	1,031	1,054
Female	508	496	492	503	521	522	530
Male	544	505	497	505	492	509	524
GAs	310	305	328	384	358	309	353
Female	112	111	119	159	153	129	150
Male	198	194	209	225	205	180	203
UAS	83	93	91	91	90	95	93
Staff	83	93	91	91	90	95	93
Female	54	60	62	60	58	61	59
Male	29	33	29	31	32	34	34
Total	19,776	20,146	20,103	20,730	21,322	21,797	21,230

Source: Integrated Postsecondary Education Data System (IPEDS)



Fall 2021 Full-time Faculty

4,508



Full-time Faculty by Rank

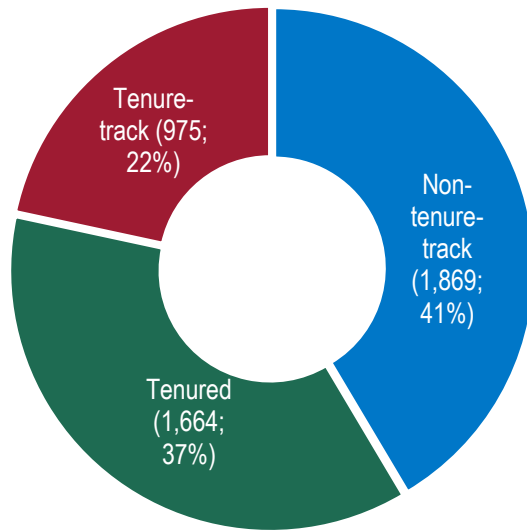
	2014	2015	2016	2017	2018	2019	2020	2021
UA	1,287	1,328	1,378	1,435	1,484	1,528	1,517	1,557
Assistant professor	360	398	426	461	494	502	474	479
Associate professor	329	333	337	337	352	363	392	403
Professor	313	304	303	311	311	319	321	334
Instructor	272	279	293	308	310	328	324	339
Lecturer	13	14	19	18	17	16	6	2
UAB	2,210	2,268	2,274	2,336	2,444	2,523	2,544	2,602
Assistant professor	771	783	798	813	894	893	890	945
Associate professor	594	592	596	608	614	677	695	713
Professor	648	676	673	704	718	735	744	738
Instructor	197	217	207	211	218	218	215	206
UAH	298	321	327	346	347	363	353	349
Assistant professor	100	91	90	95	90	97	94	91
Associate professor	86	100	100	105	107	101	97	95
Professor	61	69	66	62	64	75	75	72
Instructor	13	11	11	13	14	16	14	16
Lecturer	38	50	60	71	72	74	73	75
UAS Total	3,795	3,917	3,979	4,117	4,275	4,414	4,414	4,508
Assistant professor	1,231	1,272	1,314	1,369	1,478	1,492	1,458	1,515
Associate professor	1,009	1,025	1,033	1,050	1,073	1,141	1,184	1,211
Professor	1,022	1,049	1,042	1,077	1,093	1,129	1,140	1,144
Instructor	482	507	511	532	542	562	553	561
Lecturer	51	64	79	89	89	90	79	77

Data Source (years prior to 2021): Integrated Postsecondary Education Data System (IPEDS). Data Source (2021) : campus preliminary reports.



Tenured/Tenure-track Faculty

59%



Full-time Faculty by Tenure Status

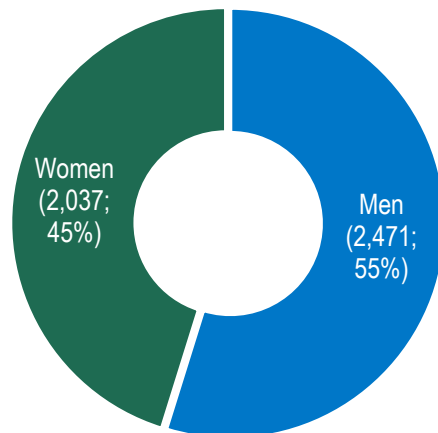
	2014	2015	2016	2017	2018	2019	2020	2021
UA	1,287	1,328	1,378	1,435	1,484	1,528	1,517	1,557
Non-tenure-track	460	433	466	486	492	523	519	557
Tenured	589	588	577	584	591	597	614	631
Tenure-track	238	307	335	365	401	408	384	369
% Tenured/Tenure-track	64%	67%	66%	66%	67%	66%	66%	64%
UAB	2,210	2,268	2,274	2,336	2,444	2,523	2,544	2,602
Non-tenure-track	929	969	940	988	1,056	1,108	1,137	1,181
Tenured	796	805	808	819	855	900	896	877
Tenure-track	485	494	526	529	533	515	511	544
% Tenured/Tenure-track	58%	57%	59%	58%	57%	56%	55%	55%
UAH	298	321	327	346	347	363	353	349
Non-tenure-track	81	92	104	121	120	127	126	131
Tenured	135	155	153	154	158	164	159	156
Tenure-track	82	74	70	71	69	72	68	62
% Tenured/Tenure-track	73%	71%	68%	65%	65%	65%	64%	62%
UAS Total	3,795	3,917	3,979	4,117	4,275	4,414	4,414	4,508
Non-tenure-track	1,470	1,494	1,510	1,595	1,668	1,758	1,782	1,869
Tenured	1,520	1,548	1,538	1,557	1,604	1,661	1,669	1,664
Tenure-track	805	875	931	965	1,003	995	963	975
% Tenured/Tenure-track	61%	62%	62%	61%	61%	60%	60%	59%

Data Source (years prior to 2021): Integrated Postsecondary Education Data System (IPEDS). Data Source (2021) : campus preliminary reports.



Female Faculty

45%



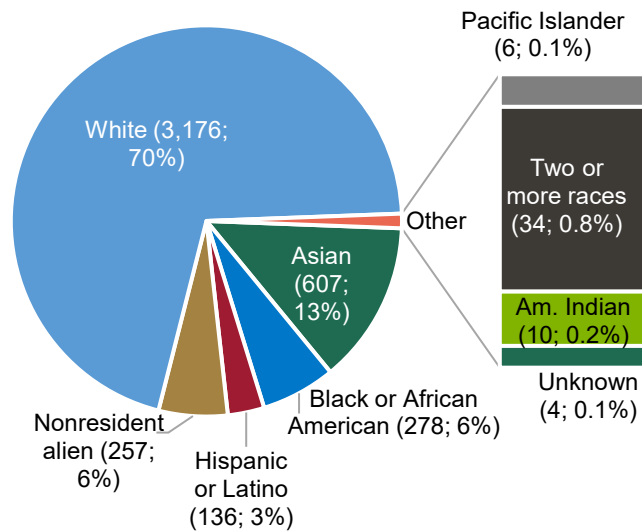
Full-time Faculty by Gender

	2014	2015	2016	2017	2018	2019	2020	2021
UA	1,287	1,328	1,378	1,435	1,484	1,528	1,517	1,557
Men	723	749	765	788	813	834	818	835
Women	564	579	613	647	671	694	699	722
% Women	44%	44%	44%	45%	45%	45%	46%	46%
UAB	2,210	2,268	2,274	2,336	2,444	2,523	2,544	2,602
Men	1,331	1,369	1,360	1,389	1,432	1,441	1,438	1,448
Women	879	899	914	947	1,012	1,082	1,106	1,154
% Women	40%	40%	40%	41%	41%	43%	43%	44%
UAH	298	321	327	346	347	363	353	349
Men	180	187	187	191	191	196	194	188
Women	118	134	140	155	156	167	159	161
% Women	40%	42%	43%	45%	45%	46%	45%	46%
UAS Total	3,795	3,917	3,979	4,117	4,275	4,414	4,414	4,508
Men	2,234	2,305	2,312	2,368	2,436	2,471	2,450	2,471
Women	1,561	1,612	1,667	1,749	1,839	1,943	1,964	2,037
% Women	41%	41%	42%	42%	43%	44%	44%	45%

Data Source (years prior to 2021): Integrated Postsecondary Education Data System (IPEDS). Data Source (2021): campus preliminary reports.

African American Faculty

6%



- Asian (607; 13%)
- Black or African American (278; 6%)
- Hispanic or Latino (136; 3%)
- Nonresident alien (257; 6%)
- White (3,176; 70%)
- Pacific Islander (6; 0.1%)
- Two or more races (34; 0.8%)
- Am. Indian (10; 0.2%)
- Unknown (4; 0.1%)

Full-Time Faculty by Race/Ethnicity

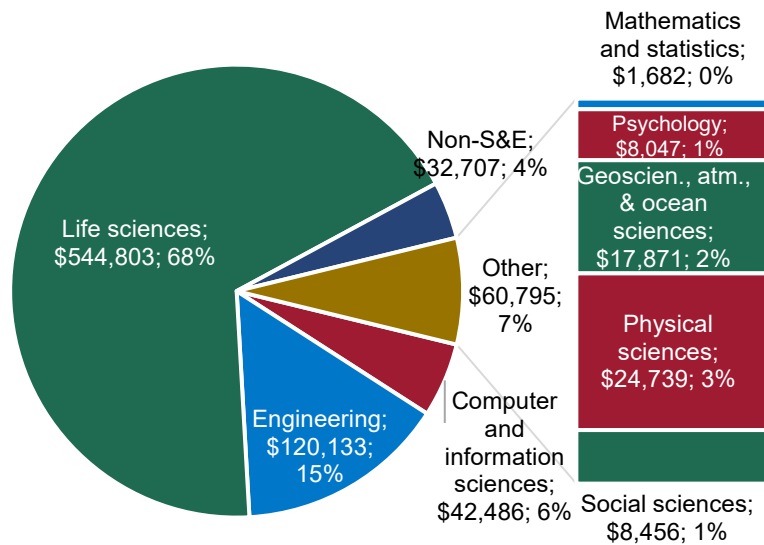
	2014	2015	2016	2017	2018	2019	2020	2021
The University of Alabama	1,287	1,328	1,378	1,435	1,484	1,528	1,517	1,557
American Indian or Alaska Native			1	4	4	4	4	3
Asian	88	88	94	107	118	137	134	146
Black or African American	79	76	80	93	93	94	97	98
Hispanic or Latino	29	35	34	34	37	41	44	45
Native Hawaiian or Other Pacific Islander				2	2	3	3	3
Nonresident alien	41	53	59	61	65	61	68	77
Race/ethnicity unknown	2	22	63	1	3	6	3	3
Two or more races	3	4	2	2	4	6	8	12
White	1,045	1,050	1,045	1,131	1,158	1,176	1,156	1,170
University of Alabama at Birmingham	2,210	2,268	2,274	2,336	2,444	2,523	2,544	2,602
American Indian or Alaska Native	3	4	4	4	4	4	5	4
Asian	326	334	350	356	372	391	398	400
Black or African American	124	129	131	146	154	155	153	162
Hispanic or Latino	66	70	75	71	75	78	80	82
Native Hawaiian or Other Pacific Islander	1	1		2	1	1	2	3
Nonresident alien	67	69	73	91	115	137	152	160
Race/ethnicity unknown				1	3	1	2	1
Two or more races	8	12	15	17	17	18	17	21
White	1,615	1,649	1,626	1,648	1,703	1,738	1,735	1,769
University of Alabama in Huntsville	298	321	327	346	347	363	353	349
American Indian or Alaska Native						1	2	3
Asian	46	50	54	58	60	62	60	61
Black or African American	13	13	12	16	17	20	18	18
Hispanic or Latino	6	8	8	8	7	8	7	9
Native Hawaiian or Other Pacific Islander	1	1	1	1	1			
Nonresident alien	12	16	11	13	16	18	21	20
Two or more races		1	1	1	1	1	1	1
White	220	232	240	249	245	253	244	237
UAS Total	3,795	3,917	3,979	4,117	4,275	4,414	4,414	4,508

Data Source (years prior to 2021): Integrated Postsecondary Education Data System (IPEDS). Data Source (2021): campus preliminary reports.



R&D Expenditures
(Dollars in Thousands)

\$800,924

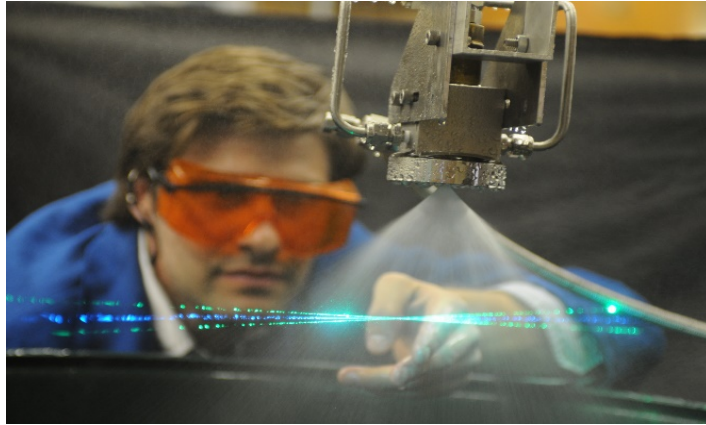


R&D Expenditures by Field of Study

(Dollars in Thousands)

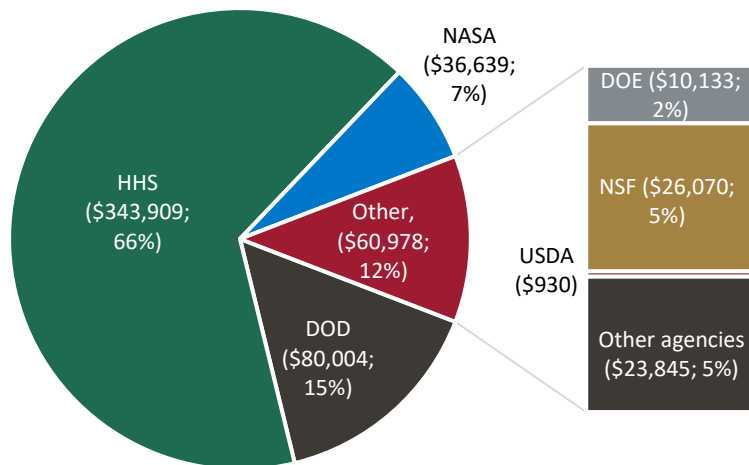
	2014	2015	2016	2017	2018	2019
UA	\$53,140	\$58,234	\$62,549	\$63,282	\$71,992	\$83,317
Computer and information sciences	\$11,756	\$14,145	\$13,443	\$12,047	\$11,550	\$12,482
Engineering	\$15,372	\$17,102	\$18,394	\$19,382	\$24,667	\$31,845
Geosc., atmosph., & ocean scien.	\$823	\$903	\$1,597	\$828	\$895	\$1,000
Life sciences	\$4,886	\$5,333	\$5,174	\$5,668	\$7,297	\$8,452
Mathematics and statistics	\$275	\$200	\$127	\$99	\$43	\$179
Non-S&E	\$5,220	\$6,679	\$9,154	\$11,131	\$12,081	\$15,285
Other sciences	\$31					
Physical sciences	\$6,730	\$6,118	\$6,841	\$6,275	\$7,501	\$5,815
Psychology	\$3,601	\$3,887	\$3,997	\$3,394	\$2,889	\$2,931
Social sciences	\$4,446	\$3,867	\$3,822	\$4,458	\$5,069	\$5,328
UAB	\$428,563	\$516,229	\$537,825	\$561,851	\$588,207	\$607,863
Computer and informat. sciences	\$1,010	\$940	\$2,466	\$575	\$919	\$827
Engineering	\$17,847	\$37,222	\$43,359	\$47,730	\$48,102	\$47,555
Geosc., atmosph., & ocean scien.	\$342	\$8,362	\$2,022	\$1,496	\$1,199	\$870
Life sciences	\$396,805	\$455,478	\$472,114	\$491,477	\$511,345	\$533,536
Mathematics and statistics	\$264	\$137	\$1,157	\$324	\$320	\$876
Non-S&E	\$7,088	\$6,643	\$6,333	\$8,200	\$13,147	\$12,502
Physical sciences	\$2,819	\$3,003	\$4,898	\$5,667	\$7,211	\$5,961
Psychology	\$2,085	\$4,161	\$5,235	\$5,558	\$5,355	\$4,933
Social sciences	\$303	\$283	\$241	\$824	\$609	\$803
UAH	\$89,325	\$88,439	\$96,865	\$94,376	\$99,405	\$109,744
Computer and information sciences	\$22,533	\$24,366	\$27,819	\$27,191	\$26,973	\$29,177
Engineering	\$41,665	\$35,720	\$35,151	\$32,555	\$34,105	\$40,733
Geosc., atmosph., & ocean scien.	\$11,382	\$11,781	\$13,440	\$13,866	\$12,552	\$16,001
Life sciences	\$1,438	\$1,307	\$2,004	\$1,864	\$2,528	\$2,815
Mathematics and statistics	\$408	\$540	\$596	\$512	\$500	\$627
Non-S&E	\$3,331	\$3,694	\$5,316	\$4,984	\$4,886	\$4,920
Physical sciences	\$7,808	\$9,075	\$9,888	\$10,415	\$14,459	\$12,963
Psychology	\$227	\$267	\$289	\$124	\$175	\$183
Social sciences	\$533	\$1,689	\$2,362	\$2,865	\$3,227	\$2,325
Total	\$571,028	\$662,902	\$697,239	\$719,509	\$759,604	\$800,924

Source: Higher Education Research and Development Survey (HERD)



Federally Funded R&D Expenditures

\$521,530



R&D Expenditures by Source of Funding

(Dollars in Thousands)

	2014	2015	2016	2017	2018	2019
UA	\$53,140	\$58,234	\$62,549	\$63,282	\$71,992	\$83,317
Federal	\$26,161	\$28,988	\$28,425	\$27,692	\$30,447	\$37,916
DOD	\$2,367	\$2,389	\$2,954	\$2,620	\$2,503	\$3,428
DOE	\$2,882	\$2,995	\$2,493	\$2,216	\$2,794	\$3,893
HHS	\$4,270	\$5,208	\$5,317	\$6,640	\$5,312	\$6,158
NASA	\$881	\$1,118	\$1,108	\$1,086	\$1,397	\$1,463
NSF	\$7,399	\$6,566	\$7,130	\$7,548	\$10,077	\$9,954
USDA	\$475	\$326	\$396	\$390	\$373	\$595
Other agencies	\$7,887	\$10,386	\$9,027	\$7,192	\$7,991	\$12,425
Non-federal	\$26,979	\$29,246	\$34,124	\$35,590	\$41,545	\$45,401
Business	\$2,060	\$2,252	\$2,440	\$1,945	\$2,917	\$2,799
Institution funds	\$16,641	\$18,828	\$21,422	\$22,563	\$27,111	\$30,801
Nonprofit organizations	\$447	\$375	\$486	\$1,084	\$850	\$977
State and local government	\$7,137	\$7,220	\$9,258	\$9,585	\$9,607	\$9,791
All other sources	\$694	\$571	\$518	\$413	\$1,060	\$1,033
UAB	\$428,563	\$516,229	\$537,825	\$561,851	\$588,207	\$607,863
Federal	\$280,333	\$328,531	\$348,632	\$358,916	\$373,360	\$398,403
DOD	\$12,352	\$21,996	\$20,177	\$26,393	\$26,029	\$29,147
DOE	\$1,232	\$7,027	\$7,256	\$8,239	\$6,717	\$5,778
HHS	\$243,401	\$275,414	\$299,666	\$302,624	\$313,677	\$337,055
NASA	\$7,079	\$11,159	\$10,812	\$9,634	\$12,118	\$11,500
NSF	\$7,029	\$6,978	\$5,665	\$6,066	\$7,137	\$7,462
USDA	\$23	\$77	\$44	\$8	\$77	\$89
Other agencies	\$9,217	\$5,880	\$5,012	\$5,952	\$7,605	\$7,372
Non-federal	\$148,230	\$187,698	\$189,193	\$202,935	\$214,847	\$209,460
Business	\$25,325	\$48,540	\$50,040	\$57,874	\$60,726	\$60,048
Institution funds	\$102,632	\$111,925	\$106,745	\$109,918	\$115,860	\$106,085
Nonprofit organizations	\$19,075	\$21,832	\$26,738	\$29,280	\$30,200	\$31,893
State and local government	\$1,198	\$3,401	\$5,670	\$5,403	\$7,508	\$11,434
All other sources		\$2,000		\$460	\$553	

Source: Higher Education Research and Development Survey (HERD)

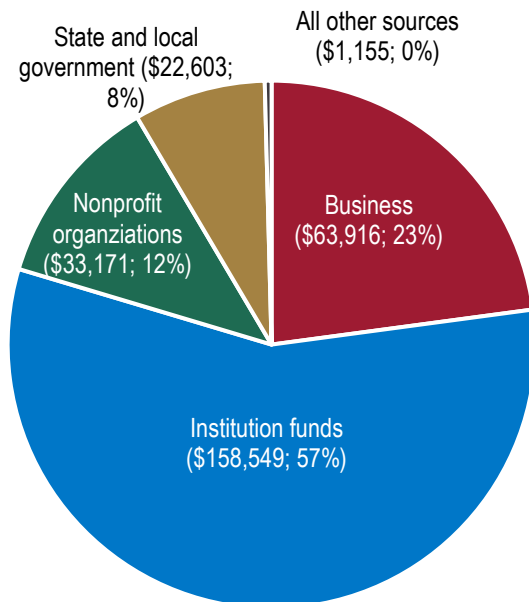
R&D Expenditures by Source of Funding

(Dollars in Thousands)



Non-federally Funded R&D Expenditures

\$279,394



	2014	2015	2016	2017	2018	2019
UAH	\$89,325	\$88,439	\$96,865	\$94,376	\$99,405	\$109,744
Federal	\$75,343	\$67,451	\$69,824	\$68,609	\$74,650	\$85,211
DOD	\$49,941	\$40,251	\$42,163	\$38,982	\$40,095	\$47,429
DOE	\$864	\$551	\$365	\$438	\$212	\$462
HHS	\$303	\$289	\$123	\$334	\$470	\$696
NASA	\$19,158	\$19,520	\$19,653	\$21,766	\$23,352	\$23,676
NSF	\$3,201	\$3,517	\$4,043	\$4,098	\$7,095	\$8,654
USDA	\$682	\$815	\$506	\$150	\$185	\$246
Other agencies	\$1,194	\$2,508	\$2,971	\$2,841	\$3,241	\$4,048
Non-federal	\$13,982	\$20,988	\$27,041	\$25,767	\$24,755	\$24,533
Business	\$1,441	\$1,403	\$2,124	\$1,439	\$1,001	\$1,069
Institution funds	\$11,320	\$18,099	\$22,370	\$21,965	\$21,886	\$21,663
Nonprofit organizations	\$113	\$9	\$355	\$510	\$297	\$301
State and local government	\$822	\$1,450	\$2,022	\$1,358	\$1,442	\$1,378
All other sources	\$286	\$27	\$170	\$495	\$129	\$122
UAS Total	\$571,028	\$662,902	\$697,239	\$719,509	\$759,604	\$800,924
Federal	\$381,837	\$424,970	\$446,881	\$455,217	\$478,457	\$521,530
DOD	\$64,660	\$64,636	\$65,294	\$67,995	\$68,627	\$80,004
DOE	\$4,978	\$10,573	\$10,114	\$10,893	\$9,723	\$10,133
HHS	\$247,974	\$280,911	\$305,106	\$309,598	\$319,459	\$343,909
NASA	\$27,118	\$31,797	\$31,573	\$32,486	\$36,867	\$36,639
NSF	\$17,629	\$17,061	\$16,838	\$17,712	\$24,309	\$26,070
USDA	\$1,180	\$1,218	\$946	\$548	\$635	\$930
Other agencies	\$18,298	\$18,774	\$17,010	\$15,985	\$18,837	\$23,845
Non-federal	\$189,191	\$237,932	\$250,358	\$264,292	\$281,147	\$279,394
Business	\$28,826	\$52,195	\$54,604	\$61,258	\$64,644	\$63,916
Institution funds	\$130,593	\$148,852	\$150,537	\$154,446	\$164,857	\$158,549
Nonprofit organizations	\$19,635	\$22,216	\$27,579	\$30,874	\$31,347	\$33,171
State and local government	\$9,157	\$12,071	\$16,950	\$16,346	\$18,557	\$22,603
All other sources	\$980	\$2,598	\$688	\$1,368	\$1,742	\$1,155

Source: Higher Education Research and Development Survey (HERD)

Statements of Net Position

The University of Alabama



2020
End of Year
Net Position

\$2,323,368,147

2020
Assets and Deferred
Outflows of Resources

\$5,067,396,502

2020
Liabilities

\$2,542,095,875

	2016	2017	2018	2019	2020
Current assets	549,059,715	586,593,318	553,887,777	616,255,540	725,759,658
Cash and cash equivalents	58,508,122	58,865,537	75,384,248	110,653,924	161,446,305
Short-term investments	294,516,868	306,944,426	260,676,941	283,159,572	344,928,284
Accounts receivable, net	86,442,994	100,624,536	96,091,544	91,811,771	91,105,769
Other current assets	109,591,731	120,158,819	121,735,044	130,630,273	128,279,300
Noncurrent assets	3,339,543,273	3,686,031,117	3,845,999,816	4,140,639,918	4,155,750,451
Restricted cash and cash equivalents	2,605,325	2,753,537	3,399,556	4,746,827	13,984,227
Endowment and life income investments	683,226,537	785,374,066	845,934,399	832,842,409	820,554,775
Investments for capital activities	266,214,793	426,683,893	339,549,277	650,087,836	432,015,246
Capital assets, net	1,904,412,183	1,983,596,717	2,100,055,575	2,172,997,368	2,374,645,592
Other noncurrent assets	483,084,435	487,622,904	557,061,009	479,965,478	514,550,611
Deferred outflows of resources	126,240,424	158,389,969	175,548,131	199,303,561	185,886,393
Pension and OPEB obligations	112,583,201	144,365,221	162,406,491	180,721,290	168,514,132
Other deferred outflows of resources	13,657,223	14,024,748	13,141,640	18,582,271	17,372,261
Total assets and deferred outflows	4,014,843,412	4,431,014,404	4,575,435,724	4,956,199,019	5,067,396,502
Current liabilities	579,674,791	594,343,066	534,275,339	569,959,721	542,794,538
Accounts payable and accrued liabilities	130,161,415	144,556,466	143,398,543	139,091,428	157,835,424
Current portion of unearned revenue	267,883,095	304,119,075	306,806,133	353,128,982	299,997,609
Deposits	156,694,155	113,330,935	51,389,406	35,251,861	43,638,808
Current portion of long-term debt	24,936,126	32,336,590	32,681,257	42,487,450	41,322,697
Noncurrent liabilities	1,521,284,078	1,685,516,066	1,850,454,892	2,134,390,365	1,999,301,337
Federal advances - loan funds	8,927,863	9,691,088	9,894,351	8,393,239	8,664,137
Long-term debt, net	926,085,211	1,041,305,641	1,005,691,287	1,251,641,581	1,208,064,263
Pension liability	572,814,000	623,398,000	565,233,000	594,410,000	646,185,000
OPEB liability			257,683,278	267,378,182	108,975,155
Other noncurrent liabilities	13,457,004	11,121,337	11,952,976	12,567,363	27,412,782
Total liabilities	2,100,958,869	2,279,859,132	2,384,730,231	2,704,350,086	2,542,095,875
Deferred inflows of resources	3,103,000	16,054,000	89,599,673	95,211,670	201,932,480
Pension and OPEB obligations	3,103,000	16,054,000	86,757,158	92,807,931	199,594,551
Deferred inflows of resources, other			2,842,515	2,403,739	2,337,929
Net position	1,910,781,543	2,135,101,272	2,101,105,820	2,156,637,263	2,323,368,147
Net investment in capital assets	1,002,586,271	1,076,735,303	1,151,792,864	1,210,048,918	1,322,651,902
Restricted-nonexpendable	399,742,094	431,499,195	458,967,808	480,733,622	502,203,055
Restricted-expendable	318,828,906	386,414,207	432,404,952	417,325,242	436,716,309
Unrestricted	189,624,272	240,452,567	57,940,196	48,529,481	61,796,881
Total liabilities, deferred inflows of resources and net position	4,014,843,412	4,431,014,404	4,575,435,724	4,956,199,019	5,067,396,502

The amounts presented above include the University and its blended component unit, the Crimson Tide Foundation.

Source: The University of Alabama Annual Financial Reports

UAS Data Summary, February 2021

Statements of Net Position

The University of Alabama at Birmingham



2020
End of Year
Net Position
\$2,287,339,500

2020
Assets and Deferred
Outflows of Resources
\$6,250,380,843

2020
Liabilities
\$3,441,104,227

	2016	2017	2018	2019	2020
Current assets	1,553,627,664	1,710,595,950	1,829,451,447	2,071,860,183	2,536,697,047
Cash and cash equivalents	366,615,811	402,323,457	341,288,837	380,593,397	641,920,794
Short-term investments	765,478,983	889,971,001	999,762,476	1,084,308,490	1,196,891,055
Accounts receivable, net	354,251,209	346,583,676	379,353,664	481,727,985	565,381,018
Other current assets	67,281,661	71,717,816	109,046,470	125,230,311	132,504,180
Noncurrent assets	2,851,426,450	3,110,622,214	3,223,521,555	3,460,103,991	3,394,853,066
Restricted cash and cash equivalents*	14,720,928	22,213,402	13,578,310	141,864,878	63,368,334
Endowment and life income investments	449,335,052	495,444,170	524,782,469	537,457,828	539,974,716
Investments for capital activities	718,044,845	848,706,636	807,541,053	825,529,381	797,791,901
Capital assets, net	1,539,894,566	1,600,940,041	1,647,560,771	1,723,027,158	1,784,230,411
Other noncurrent assets	129,431,059	143,317,965	230,058,952	232,224,746	209,487,704
Deferred outflows of resources	179,109,220	212,145,497	297,526,667	313,741,542	318,830,730
Pension and OPEB obligations	167,981,000	197,907,000	284,267,363	301,435,989	305,494,017
Other deferred outflows of resources	11,128,220	14,238,497	13,259,304	12,305,553	13,336,713
Total assets and deferred outflows	4,584,163,334	5,033,363,661	5,350,499,669	5,845,705,716	6,250,380,843
Current liabilities	495,362,237	564,064,026	532,298,414	544,331,398	800,205,475
Accounts payable and accrued liabilities	330,348,017	379,142,524	338,881,337	342,830,127	596,371,343
Current portion of unearned revenue	118,753,590	134,644,494	144,553,055	150,331,709	150,006,083
Deposits	11,413,395	12,556,458	13,912,936	15,788,813	15,078,378
Current portion of long-term debt	34,847,235	37,720,550	34,951,086	35,380,749	38,749,671
Noncurrent liabilities	2,119,813,291	2,251,669,042	2,754,500,058	2,998,164,006	2,640,898,752
Federal advances - loan funds	13,993,312	13,538,130	12,374,410	11,056,522	8,483,518
Long-term debt, net	843,683,512	939,147,663	902,290,484	1,127,090,695	1,087,186,699
Pension liability	1,247,128,000	1,284,396,000	1,161,162,000	1,168,305,000	1,245,083,000
OPEB liability			664,329,034	677,611,841	271,431,941
Other noncurrent liabilities	15,008,467	14,587,249	14,344,130	14,099,948	28,713,594
Total liabilities	2,615,175,528	2,815,733,068	3,286,798,472	3,542,495,404	3,441,104,227
Deferred inflows of resources	51,864,496	70,124,653	218,264,713	224,814,872	521,937,116
Pension and OPEB obligations	51,775,000	70,055,000	218,210,406	224,773,994	521,937,116
Deferred inflows of resources, other	89,496	69,653	54,307	40,878	
Net position	1,917,123,310	2,147,505,940	1,845,436,484	2,078,395,440	2,287,339,500
Net investment in capital assets	686,403,862	704,791,969	744,768,861	759,496,749	769,281,767
Restricted-nonexpendable	320,965,491	359,844,678	386,738,832	401,733,396	405,615,948
Restricted-expendable	315,513,729	337,272,370	354,341,414	377,422,933	353,055,159
Unrestricted	594,240,228	745,596,923	359,587,377	539,742,362	759,386,626
Total liabilities, deferred inflows of resources and net position	4,584,163,334	5,033,363,661	5,350,499,669	5,845,705,716	6,250,380,843

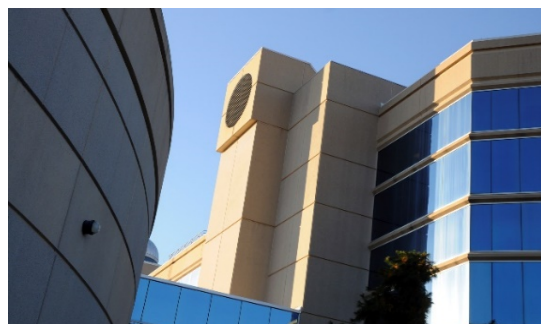
*Includes cash designated for capital activities

The amounts presented above include the University and its blended component unit, the UAB Athletic Foundation.

Source: The University of Alabama at Birmingham Annual Financial Reports

Statements of Net Position

The University of Alabama in Huntsville



2020
End of Year
Net Position
\$92,443,507

2020
Assets and Deferred
Outflows of Resources
\$557,580,623

2020
Liabilities
\$418,779,906

	2016	2017	2018	2019	2020
Current assets	127,947,579	120,081,297	120,009,299	115,007,493	114,048,255
Cash and cash equivalents	31,638,074	12,502,465	31,943,600	29,564,137	42,590,181
Short-term investments	59,595,149	65,786,136	39,294,940	23,782,952	11,687,721
Accounts receivable, net	22,959,641	25,651,203	30,403,827	39,971,336	39,384,004
Other current assets	13,754,715	16,141,493	18,366,932	21,689,068	20,386,349
Noncurrent assets	313,140,776	330,954,118	362,832,311	407,035,636	407,055,475
Restricted cash and cash equivalents	617,147	637,878	4,127,889	19,153,493	8,593,145
Endowment and life income investments	31,770,261	34,138,879	35,126,425	34,043,115	33,254,580
Investments for capital activities	20,560,000	21,382,000	25,417,000	41,035,400	51,937,678
Capital assets, net	256,999,556	272,008,654	295,483,325	310,234,994	310,845,959
Other noncurrent assets	3,193,812	2,786,707	2,677,672	2,568,634	2,424,113
Deferred outflows of resources	26,849,143	29,180,939	32,894,090	35,809,718	36,476,893
Pension and OPEB obligations	26,849,143	29,180,939	32,894,090	35,809,718	36,476,893
Total assets and deferred outflows	467,937,498	480,216,354	515,735,700	557,852,847	557,580,623
Current liabilities	61,682,340	71,997,883	71,564,101	90,508,497	85,787,067
Accounts payable and accrued liabilities	18,435,391	24,545,606	20,020,633	31,473,006	27,901,849
Current portion of unearned revenue	34,478,616	38,136,944	42,595,428	49,315,513	48,527,840
Deposits	3,774,095	4,219,095	4,225,891	4,411,829	4,098,522
Current portion of long-term debt	4,994,238	5,096,238	4,722,149	5,308,149	5,258,856
Noncurrent liabilities	255,958,429	255,732,726	324,923,772	355,755,364	332,992,839
Federal advances - loan funds	210,166	380,330	505,113	601,011	721,113
Long-term debt, net	95,358,263	90,220,396	123,145,440	147,773,906	147,637,713
Pension liability	160,390,000	165,132,000	147,428,000	150,951,000	161,346,000
OPEB liability			53,845,219	56,429,447	23,288,013
Total liabilities	317,640,769	327,730,609	396,487,873	446,263,861	418,779,906
Deferred inflows of resources	6,963,000	9,472,000	26,728,420	25,324,831	46,357,210
Pension and OPEB obligations	6,963,000	9,472,000	26,728,420	25,324,831	46,357,210
Net position	143,333,729	143,013,745	92,519,407	86,264,155	92,443,507
Net investment in capital assets	155,607,523	171,194,003	168,455,369	165,385,148	165,514,356
Restricted-nonexpendable	9,286,245	9,944,805	9,990,561	10,020,768	10,052,197
Restricted-expendable	16,718,461	16,114,461	18,303,547	12,180,318	11,039,538
Unrestricted	(38,278,500)	(54,239,524)	(104,230,070)	(101,322,079)	(94,162,584)
Total liabilities, deferred inflows of resources and net position	467,937,498	480,216,354	515,735,700	557,852,847	557,580,623

Source: The University of Alabama in Huntsville Annual Financial Reports

UAS Data Summary, February 2021

Page 44



Statements of Net Position

University of Alabama System Office

2020
End of Year
Net Position

\$4,596,551

2020
Assets and Deferred
Outflows of Resources

\$35,025,059

2020
Liabilities

\$25,162,328

	2016	2017	2018	2019	2020
Current assets	4,480,939	3,353,334	2,690,547	3,116,550	4,519,955
Cash and cash equivalents	3,320,508	1,642,077	1,410,053	1,363,263	2,398,556
Accounts receivable, net	1,042,912	1,670,504	1,239,741	1,753,287	2,121,399
Other current assets	117,519	40,753	40,753		
Noncurrent assets	21,486,790	23,504,875	25,475,110	25,648,611	25,599,050
Capital assets, net	12,936,790	12,549,345	12,201,689	12,406,674	12,141,699
Other noncurrent assets	8,550,000	10,955,530	13,273,421	13,241,937	13,457,351
Deferred outflows of resources	3,203,703	4,752,464	5,260,125	5,284,335	4,906,054
Pension and OPEB obligations	3,203,703	4,752,464	5,260,125	5,284,335	4,906,054
Total assets and deferred outflows	29,171,432	31,610,673	33,425,782	34,049,496	35,025,059
Current liabilities	2,964,780	3,329,642	3,021,585	3,566,251	4,440,557
Accounts payable and accrued liabilities	2,964,780	3,329,642	3,021,585	3,566,251	4,440,557
Noncurrent liabilities	16,051,000	18,342,000	22,104,453	22,816,505	20,721,771
Pension liability	16,051,000	18,342,000	15,575,000	16,046,000	17,924,000
OPEB liability			6,529,453	6,770,505	2,797,771
Total liabilities	19,015,780	21,671,642	25,126,038	26,382,756	25,162,328
Deferred inflows of resources	364,000	665,000	3,321,715	3,159,931	5,266,180
Pension and OPEB obligations	364,000	665,000	3,321,715	3,159,931	5,266,180
Net position	9,791,652	9,274,031	4,978,029	4,506,809	4,596,551
Net investment in capital assets	12,936,790	12,549,345	12,201,689	12,406,674	12,141,699
Unrestricted	(3,145,138)	(3,275,314)	(7,223,660)	(7,899,865)	(7,545,148)
Total liabilities, deferred inflows of resources and net position	29,171,432	31,610,673	33,425,782	34,049,496	35,025,059

Source: University of Alabama System Office Annual Financial Reports

Statements of Net Position

University of Alabama System Universities



2020
End of Year
Net Position
\$4,703,151,154

2020
Assets and Deferred
Outflows of Resources
\$11,875,357,968

2020
Liabilities
\$6,401,980,008

	2016	2017	2018	2019	2020
Current assets	2,230,634,958	2,417,270,565	2,503,348,523	2,803,123,216	3,376,504,960
Cash and cash equivalents	456,762,007	473,691,459	448,616,685	520,811,458	845,957,280
Short-term investments	1,119,591,000	1,262,701,563	1,299,734,357	1,391,251,014	1,553,507,060
Accounts receivable, net	463,653,844	472,859,415	505,849,035	613,511,092	695,870,791
Other current assets	190,628,107	208,018,128	249,148,446	277,549,652	281,169,829
Noncurrent assets	6,504,110,499	7,127,607,449	7,432,353,682	8,007,779,545	7,957,658,992
Restricted cash and cash equivalents	17,943,400	25,604,817	21,105,755	165,765,198	85,945,706
Endowment and life income investments	1,164,331,850	1,314,957,115	1,405,843,293	1,404,343,352	1,393,784,071
Investments for capital activities	1,004,819,638	1,296,772,529	1,172,507,330	1,516,652,617	1,281,744,825
Capital assets, net	3,701,306,305	3,856,545,412	4,043,099,671	4,206,259,520	4,469,721,962
Other noncurrent assets	615,709,306	633,727,576	789,797,633	714,758,858	726,462,428
Deferred outflows of resources	332,198,787	399,716,405	505,968,888	548,854,821	541,194,016
Pension and OPEB obligations	307,413,344	371,453,160	479,567,944	517,966,997	510,485,042
Other deferred outflows of resources	24,785,443	28,263,245	26,400,944	30,887,824	30,708,974
Total assets and deferred outflows	9,066,944,244	9,944,594,419	10,441,671,093	11,359,757,582	11,875,357,968
Current liabilities	1,136,719,368	1,230,404,975	1,138,137,854	1,204,799,616	1,428,787,080
Accounts payable and accrued liabilities	478,944,823	548,244,596	502,300,513	513,394,561	782,108,616
Current portion of unearned revenue	421,115,301	476,900,513	493,954,616	552,776,204	498,531,532
Deposits	171,881,645	130,106,488	69,528,233	55,452,503	62,815,708
Current portion of long-term debt	64,777,599	75,153,378	72,354,492	83,176,348	85,331,224
Noncurrent liabilities	3,897,055,798	4,192,917,834	4,929,878,722	5,488,309,735	4,973,192,928
Federal advances - loan funds	23,131,341	23,609,548	22,773,874	20,050,772	17,868,768
Long-term debt, net	1,865,126,986	2,070,673,700	2,031,127,211	2,526,506,182	2,442,888,675
Pension liability	1,980,332,000	2,072,926,000	1,873,823,000	1,913,666,000	2,052,614,000
OPEB liability			975,857,531	1,001,419,470	403,695,109
Other noncurrent liabilities	28,465,471	25,708,586	26,297,106	26,667,311	56,126,376
Total liabilities	5,033,775,166	5,423,322,809	6,068,016,576	6,693,109,351	6,401,980,008
Deferred inflows of resources	61,930,496	95,650,653	334,592,806	345,351,373	770,226,806
Pension and OPEB obligations	61,841,000	95,581,000	331,695,984	342,906,756	767,888,877
Deferred inflows of resources, other	89,496	69,653	2,896,822	2,444,617	2,337,929
Net position	3,971,238,582	4,425,620,957	4,039,061,711	4,321,296,858	4,703,151,154
Net investment in capital assets	1,844,597,656	1,952,721,275	2,065,017,094	2,134,930,815	2,257,448,025
Restricted-nonexpendable	729,993,830	801,288,678	855,697,201	892,487,786	917,871,200
Restricted-expendable	651,061,096	739,801,038	805,049,913	806,928,493	800,811,006
Unrestricted	745,586,000	931,809,966	313,297,503	486,949,764	727,020,923
Total liabilities, deferred inflows of resources and net position	9,066,944,244	9,944,594,419	10,441,671,093	11,359,757,582	11,875,357,968

Source: Compilation of Annual Financial Reports from Universities

Statements of Revenues, Expenses, and Changes in Net Position

The University of Alabama



2020
End of Year
Net Position
\$2,323,368,147

2020
Operating Revenues
\$870,652,902

2020
Nonoperating Revenues
(Expenses)
\$233,369,217

	2016	2017	2018	2019	2020
Operating revenues	818,531,811	833,649,655	875,085,138	906,835,177	870,652,902
Tuition and fees, net	476,732,091	482,761,041	516,765,773	532,541,233	525,521,122
Federal operating grants and contracts	41,906,976	40,416,650	44,549,124	54,497,395	61,180,497
State operating grants and contracts	31,590,157	31,261,415	31,215,296	31,209,610	31,189,670
Local operating grants and contracts	759,374	1,016,793	991,806	942,937	1,200,281
Private operating grants and contracts	5,174,452	3,836,612	5,589,320	6,838,737	4,587,580
Sales and services of auxiliary enterprises	193,964,754	202,333,172	200,256,134	201,829,933	158,930,066
Sales and services of educ. activities	12,619,542	12,776,616	12,644,047	12,167,759	9,866,923
Other sources - operating	55,784,465	59,247,356	63,073,638	66,807,573	78,176,763
Operating expenses	948,912,956	1,016,919,818	1,061,866,729	1,108,966,258	1,033,692,957
Salaries, wages, and benefits	612,470,213	666,320,083	699,755,982	728,517,509	711,111,598
Supplies and services	248,660,589	253,651,612	262,939,882	275,323,598	205,449,757
Depreciation	67,410,991	72,374,750	75,485,224	78,865,931	81,695,869
Scholarships and fellowships	20,371,163	24,573,373	23,685,641	26,259,220	35,435,733
Nonoperating revenues (expenses)	238,748,301	362,876,879	286,134,987	205,236,191	233,369,217
State educational appropriations	148,441,872	154,836,324	156,742,802	169,733,687	182,797,957
Gifts	52,203,061	56,126,778	48,858,002	29,440,777	54,380,178
Grants	31,062,427	31,599,501	33,197,108	32,849,900	51,528,484
Investment income (net)	54,741,992	159,687,169	90,064,841	12,791,392	(10,630,633)
Interest expense	(38,625,161)	(37,735,938)	(41,124,252)	(37,195,807)	(39,045,098)
Other nonoper. income/expenses (net)	(9,075,890)	(1,636,955)	(1,603,514)	(2,383,758)	(5,661,671)
Income before other changes in net pos.	108,367,156	179,606,716	99,353,396	3,105,110	70,329,162
Other changes in net position	33,037,650	44,713,013	89,428,192	52,426,333	96,401,722
State capital appropriations	1,365				
Capital gifts and grants	18,564,096	18,696,113	65,669,021	33,713,554	75,191,053
Additions/adjustments to endowments	18,894,440	23,675,029	24,899,225	19,730,916	26,868,269
Intragovernmental transfers	(4,422,251)	2,341,871	(1,140,054)	(1,018,137)	(5,657,600)
Increase in net position	141,404,806	224,319,729	188,781,588	55,531,443	166,730,884
Net position, beginning of year	1,769,376,737	1,910,781,543	2,135,101,272	2,101,105,820	2,156,637,263
Cum. effect of new accounting guidance			(222,777,040)		
Net position, beginning of year (restated)	1,769,376,737	1,910,781,543	1,912,324,232	2,101,105,820	2,156,637,263
Net position, end of year	1,910,781,543	2,135,101,272	2,101,105,820	2,156,637,263	2,323,368,147

The amounts presented above include the University and its blended component unit, the Crimson Tide Foundation.

Source: The University of Alabama Annual Financial Reports

Statements of Revenues, Expenses, and Changes in Net Position

The University of Alabama at Birmingham



2020
End of Year
Net Position
\$2,287,339,500

2020
Operating Revenues
\$3,712,470,836

2018-19
Nonoperating Revenues
(Expenses)
\$430,739,578

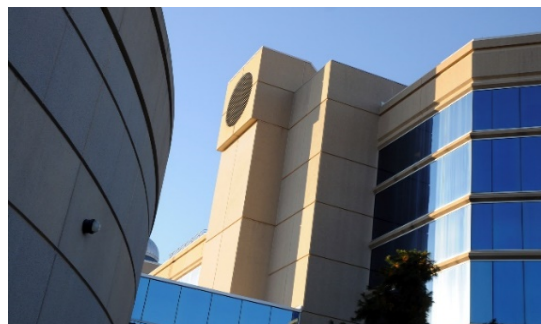
	2016	2017	2018	2019	2020
Operating revenues	2,971,428,032	3,084,238,857	3,404,474,421	3,602,383,812	3,712,470,836
Tuition and fees, net	182,483,417	208,481,228	253,707,923	239,912,344	244,929,737
Federal operating grants and contracts	342,483,955	354,409,094	370,528,637	399,343,773	392,328,131
State operating grants and contracts	9,535,237	10,548,285	8,057,617	10,967,871	9,637,192
Local operating grants and contracts	2,138,910	2,350,134	2,999,958	2,535,753	2,743,274
Private operating grants and contracts	60,630,675	72,370,499	80,047,182	81,199,945	79,212,985
Sales and services of auxiliary enterprises	584,010,583	599,580,100	690,422,963	715,700,011	762,448,115
Sales and services of hospitals	1,653,127,317	1,708,864,967	1,864,755,549	2,008,319,151	2,109,833,577
Sales and services of educ. activities	68,415,573	69,216,946	68,464,868	67,616,490	59,351,275
Other sources - operating	68,602,365	58,417,604	65,489,724	76,788,474	51,986,550
Operating expenses	3,137,324,351	3,353,597,836	3,583,867,788	3,772,700,839	3,953,876,475
Salaries, wages, and benefits	1,467,912,381	1,598,699,146	1,674,990,688	1,749,060,938	1,766,044,825
Supplies and services	1,512,804,330	1,590,907,613	1,734,410,959	1,846,254,490	2,001,552,207
Depreciation	131,758,758	137,431,750	146,686,513	148,344,143	150,994,130
Scholarships and fellowships	24,848,882	26,559,327	27,779,628	29,041,268	35,285,313
Nonoperating revenues (expenses)	432,385,615	463,331,930	395,805,610	374,382,098	430,739,578
State educational appropriations	267,329,728	272,166,253	273,351,124	287,691,735	306,964,712
Gifts	41,958,002	35,726,160	37,888,497	48,327,432	18,705,016
Grants	29,383,991	30,638,381	34,713,042	35,451,482	129,137,659
Investment income (net)	123,951,690	157,849,551	90,152,323	32,247,107	15,735,962
Interest expense	(32,030,211)	(33,472,892)	(28,964,461)	(29,755,042)	(40,126,392)
Other nonoper. income/expenses (net)	1,792,415	424,477	(11,334,915)	419,384	322,621
Income before other changes in net pos.	266,489,296	193,972,951	216,412,243	204,065,071	189,333,939
Other changes in net position	22,779,045	36,409,679	19,891,746	28,893,885	19,610,121
State capital appropriations		563,090			
Capital gifts and grants	3,347,165	15,997,447	2,285,326	789,319	1,854,223
Additions/adjustments to endowments	19,431,880	19,849,142	18,401,517	28,104,566	17,755,898
Intragovernmental transfers			(795,097)		
Increase in net position	289,268,341	230,382,630	236,303,989	232,958,956	208,944,060
Net position, beginning of year	1,627,854,969	1,917,123,310	2,147,505,940	1,845,436,484	2,078,395,440
Cum. effect of new accounting guidance			(538,373,445)		
Net position, beginning of year (restated)	1,627,854,969	1,917,123,310	1,609,132,495	1,845,436,484	2,078,395,440
Net position, end of year	1,917,123,310	2,147,505,940	1,845,436,484	2,078,395,440	2,287,339,500

The amounts presented above include the University and its blended component unit, the UAB Athletic Foundation.

Source: The University of Alabama at Birmingham Annual Financial Reports

Statements of Revenues, Expenses, and Changes in Net Position

The University of Alabama in Huntsville



2020
End of Year
Net Position
\$92,443,507

2020
Operating Revenues
\$203,201,705

2020
Nonoperating Revenues
(Expenses)
\$63,468,048

	2016	2017	2018	2019	2020
Operating revenues	151,459,139	156,278,435	167,435,999	184,515,197	203,201,705
Tuition and fees, net	57,817,833	62,397,294	67,638,989	69,513,946	71,219,313
Federal operating grants and contracts	72,609,034	72,467,222	77,317,933	89,185,692	105,431,257
State operating grants and contracts	4,567,601	4,117,407	3,919,899	3,775,885	4,373,211
Private operating grants and contracts	3,193,528	2,301,327	1,740,491	1,914,579	2,262,876
Sales and services of auxiliary enterprises	9,159,681	10,572,674	11,353,348	14,474,450	15,924,237
Sales and services of educ. activities	4,111,462	4,422,511	5,465,339	5,650,645	3,990,811
Operating expenses	212,907,733	223,569,910	235,395,096	250,384,130	261,335,136
Salaries, wages, and benefits	153,938,849	160,210,876	164,700,313	169,949,845	175,461,558
Supplies and services	41,431,063	44,771,190	50,218,743	59,793,188	63,438,366
Depreciation	15,398,090	16,043,553	17,143,814	17,167,013	18,124,586
Scholarships and fellowships	2,139,731	2,544,291	3,332,226	3,474,084	4,310,626
Nonoperating revenues (expenses)	63,902,638	65,747,338	60,786,379	58,575,714	63,468,048
State educational appropriations	44,959,223	47,833,247	48,352,459	52,365,051	55,333,602
Gifts	5,515,288	3,289,744	3,067,873	2,791,768	2,182,254
Grants	7,671,050	7,942,044	9,021,580	9,416,081	14,054,697
Investment income (net)	9,334,432	10,240,992	4,849,274	186,866	(1,026,843)
Interest expense	(3,562,561)	(3,442,330)	(4,223,715)	(6,165,545)	(7,038,136)
Other nonoper. income/expenses (net)	(14,794)	(116,359)	(281,092)	(18,507)	(37,526)
Income before other changes in net pos.	2,454,044	(1,544,137)	(7,172,718)	(7,293,219)	5,334,617
Other changes in net position		1,224,153	2,559,163	1,037,967	844,735
Capital gifts and grants		623,722	2,161,614	1,037,967	844,735
Additions/adjustments to endowments		600,431			
Intragovernmental transfers			397,549		
Increase in net position	2,454,044	(319,984)	(4,613,555)	(6,255,252)	6,179,352
Net position, beginning of year	140,879,685	143,333,729	143,013,745	92,519,407	86,264,155
Cum. effect of new accounting guidance			(45,880,783)		
Net position, beginning of year (restated)	140,879,685	143,333,729	97,132,962	92,519,407	86,264,155
Net position, end of year	143,333,729	143,013,745	92,519,407	86,264,155	92,443,507



Statements of Revenues, Expenses, and Changes in Net Position

2020
End of Year
Net Position

\$4,596,551

2020
Operating Revenues
\$21,848,976

2020
Nonoperating Revenues
(Expenses)
-\$273,779

University of Alabama System Office

	2016	2017	2018	2019	2020
Operating revenues	20,364,256	20,975,716	20,480,700	20,480,700	21,848,976
Other sources - operating	20,364,256	20,975,716	20,480,700	20,480,700	21,848,976
Operating expenses	20,909,399	22,402,138	20,037,210	20,929,410	21,485,455
Salaries, wages, and benefits	17,008,064	17,539,685	16,564,456	16,992,583	18,207,468
Supplies and services	3,497,211	4,475,008	3,091,051	3,556,812	2,865,442
Depreciation	404,124	387,445	381,703	380,015	412,545
Nonoperating revenues (expenses)	724,170	908,801	423,086	(22,510)	(273,779)
Investment income (net)	724,170	908,801	420,190	(31,484)	(284,586)
Other nonoperating income/expenses (net)			2,896	8,974	10,807
Increase in net position	179,027	(517,621)	866,576	(471,220)	89,742
Net position, beginning of year	9,612,625	9,791,652	9,274,031	4,978,029	4,506,809
Cum. effect of new accounting guidance			(5,162,578)		
Net position, beginning of year (restated)	9,612,625	9,791,652	4,111,453	4,978,029	4,506,809
Net position, end of year	9,791,652	9,274,031	4,978,029	4,506,809	4,596,551

Source: University of Alabama System Office Annual Financial Reports

UAS Data Summary, February 2021

Page 50

Statements of Revenues, Expenses, and Changes in Net Position

University of Alabama System Universities



2020
End of Year
Net Position
\$4,703,151,154

2020
Operating Revenues
\$4,786,325,443

2020
Nonoperating Revenues
(Expenses)
\$727,576,843

	2014-2015	2015-2016	2016-2017	2017-2018	2018-2019
Operating revenues	3,941,418,982	4,074,166,947	4,446,995,558	4,693,734,186	4,786,325,443
Tuition and fees, net	717,033,341	753,639,563	838,112,685	841,967,523	841,670,172
Federal operating grants and contracts	456,999,965	467,292,966	492,395,694	543,026,860	558,939,885
State operating grants and contracts	45,692,995	45,927,107	43,192,812	45,953,366	45,200,073
Local operating grants and contracts	2,898,284	3,366,927	3,991,764	3,478,690	3,943,555
Private operating grants and contracts	68,998,655	78,508,438	87,376,993	89,953,261	86,063,441
Sales and services of auxiliary enterprises	787,135,018	812,485,946	902,032,445	932,004,394	937,302,418
Sales and services of hospitals	1,653,127,317	1,708,864,967	1,864,755,549	2,008,319,151	2,109,833,577
Sales and services of educ. activities	85,146,577	86,416,073	86,574,254	85,434,894	73,209,009
Other sources - operating	124,386,830	117,664,960	128,563,362	143,596,047	130,163,313
Operating expenses	4,299,145,040	4,594,087,564	4,881,129,613	5,132,051,227	5,248,904,568
Salaries, wages, and benefits	2,234,321,443	2,425,230,105	2,539,446,983	2,647,528,292	2,652,617,981
Supplies and services	1,802,895,982	1,889,330,415	2,047,569,584	2,181,371,276	2,270,440,330
Depreciation	214,567,839	225,850,053	239,315,551	244,377,087	250,814,585
Scholarships and fellowships	47,359,776	53,676,991	54,797,495	58,774,572	75,031,672
Nonoperating revenues (expenses)	735,036,554	891,956,147	742,726,976	638,194,003	727,576,843
State educational appropriations	460,730,823	474,835,824	478,446,385	509,790,473	545,096,271
Gifts	99,676,351	95,142,682	89,814,372	80,559,977	75,267,448
Grants	68,117,468	70,179,926	76,931,730	77,717,463	194,720,840
Investment income (net)	188,028,114	327,777,712	185,066,438	45,225,365	4,078,486
Interest expense	(74,217,933)	(74,651,160)	(74,312,428)	(73,116,394)	(86,209,626)
Other nonoper. income/expenses (net)	(7,298,269)	(1,328,837)	(13,219,521)	(1,982,881)	(5,376,576)
Income before other changes in net pos.	377,310,496	372,035,530	308,592,921	199,876,962	264,997,718
Other changes in net position	55,816,695	82,346,845	111,879,101	82,358,185	116,856,578
State capital appropriations	1,365	563,090			
Capital gifts and grants	21,911,261	35,317,282	70,115,961	35,540,840	77,890,011
Additions and other adjustments to permar	38,326,320	44,124,602	43,300,742	47,835,482	44,624,167
Intragovernmental transfers	(4,422,251)	2,341,871	(1,537,602)	(1,018,137)	(5,657,600)
Increase in net position	433,127,191	454,382,375	420,472,022	282,235,147	381,854,296
Net position, beginning of year	3,538,111,391	3,971,238,582	4,425,620,957	4,039,061,711	4,321,296,858
Cum. effect of new accounting guidance			(807,031,268)		
Net position, beginning of year (restated)	3,538,111,391	3,971,238,582	3,618,589,689	4,039,061,711	4,321,296,858
Net position, end of year	3,971,238,582	4,425,620,957	4,039,061,711	4,321,296,858	4,703,151,154

Source: Compilation of Annual Financial Reports from Universities



University of Alabama System

THE UNIVERSITY OF ALABAMA
THE UNIVERSITY OF ALABAMA AT BIRMINGHAM
THE UNIVERSITY OF ALABAMA IN HUNTSVILLE
THE UAB HEALTH SYSTEM

System Analytics and Business Intelligence Office of Academic and Student Affairs

500 University Blvd. E | Tuscaloosa, AL 35401
(205) 348-8347