

# University of Alabama System

---

THE UNIVERSITY OF ALABAMA  
THE UNIVERSITY OF ALABAMA AT BIRMINGHAM  
THE UNIVERSITY OF ALABAMA IN HUNTSVILLE  
THE UAB HEALTH SYSTEM

## Data Summary (November 2022)

## UNIVERSITY OF ALABAMA SYSTEM BOARD OF TRUSTEES



**Mike Brock**

2ND CONGRESSIONAL  
DISTRICT



**Karen Brooks**

7TH CONGRESSIONAL  
DISTRICT



**Ronald Gray**

5TH CONGRESSIONAL  
DISTRICT



**Barbara Humphrey**

7TH CONGRESSIONAL  
DISTRICT



**Vanessa Leonard**

6TH CONGRESSIONAL  
DISTRICT



**W. Davis Malone III**

2ND CONGRESSIONAL  
DISTRICT



**Jeff Gronberg**

5TH CONGRESSIONAL  
DISTRICT



**Evelyn V. Mauldin**

4TH CONGRESSIONAL  
DISTRICT



**Harris Morrisette**

1ST CONGRESSIONAL  
DISTRICT



**Scott Phelps**

4TH CONGRESSIONAL  
DISTRICT



**Kenneth Simon**

7TH CONGRESSIONAL  
DISTRICT



**Marietta Urquhart**

1ST CONGRESSIONAL  
DISTRICT



**Kenneth Vandervoort M.D.**

3RD CONGRESSIONAL  
DISTRICT



**James Wilson III**

3RD CONGRESSIONAL  
DISTRICT



**W. Stancil Starnes**

6TH CONGRESSIONAL  
DISTRICT, PRESIDENT  
PRO TEMPORE



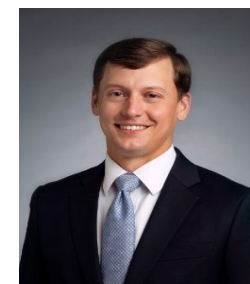
**Kay Ivey**

GOVERNOR, STATE OF  
ALABAMA, PRESIDENT EX-  
OFFICIO



**Finis E. St. John IV**

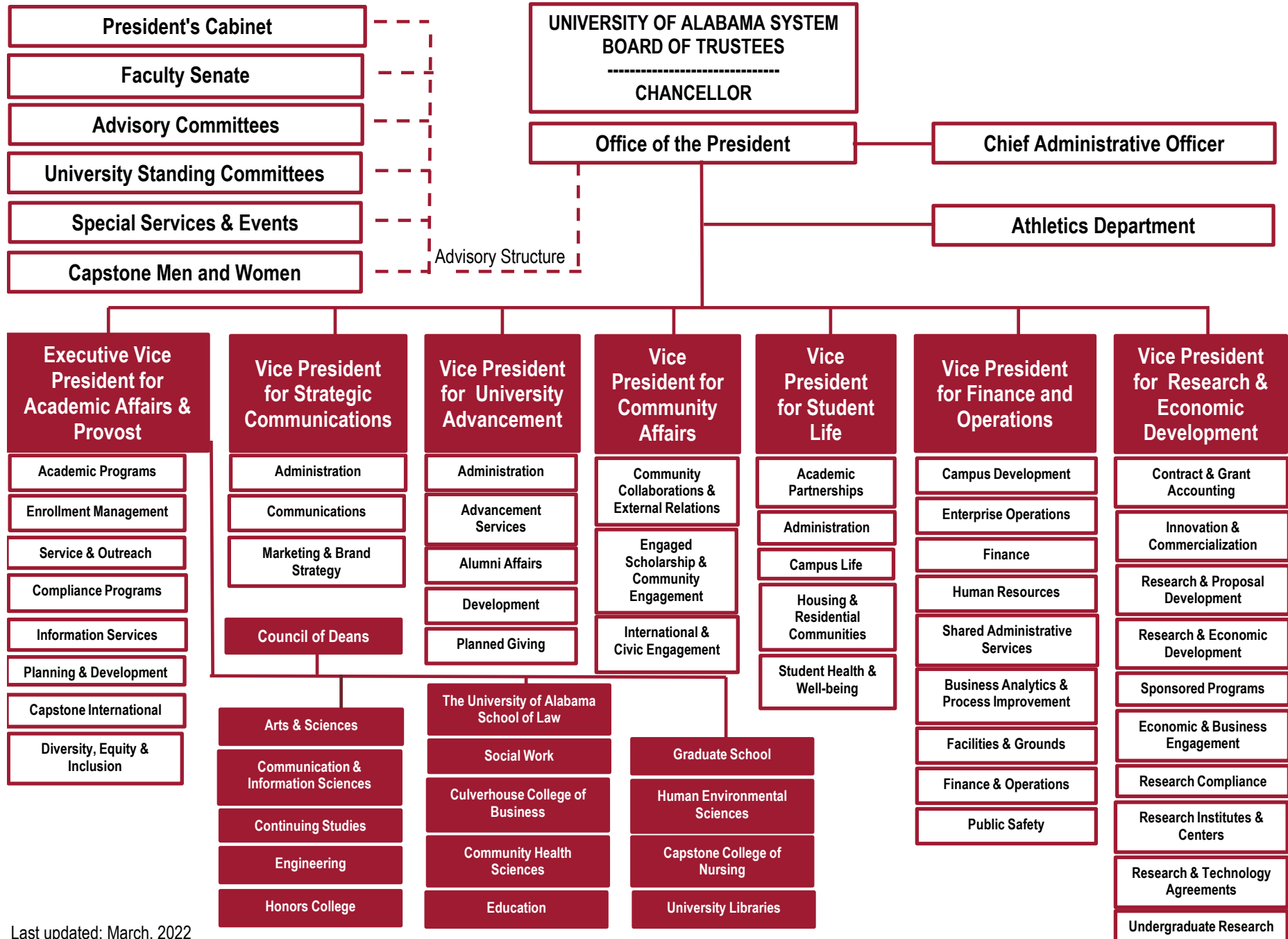
CHANCELLOR



**Mark Foley**

SECRETARY OF THE  
BOARD OF TRUSTEES

# The University of Alabama Organizational Chart

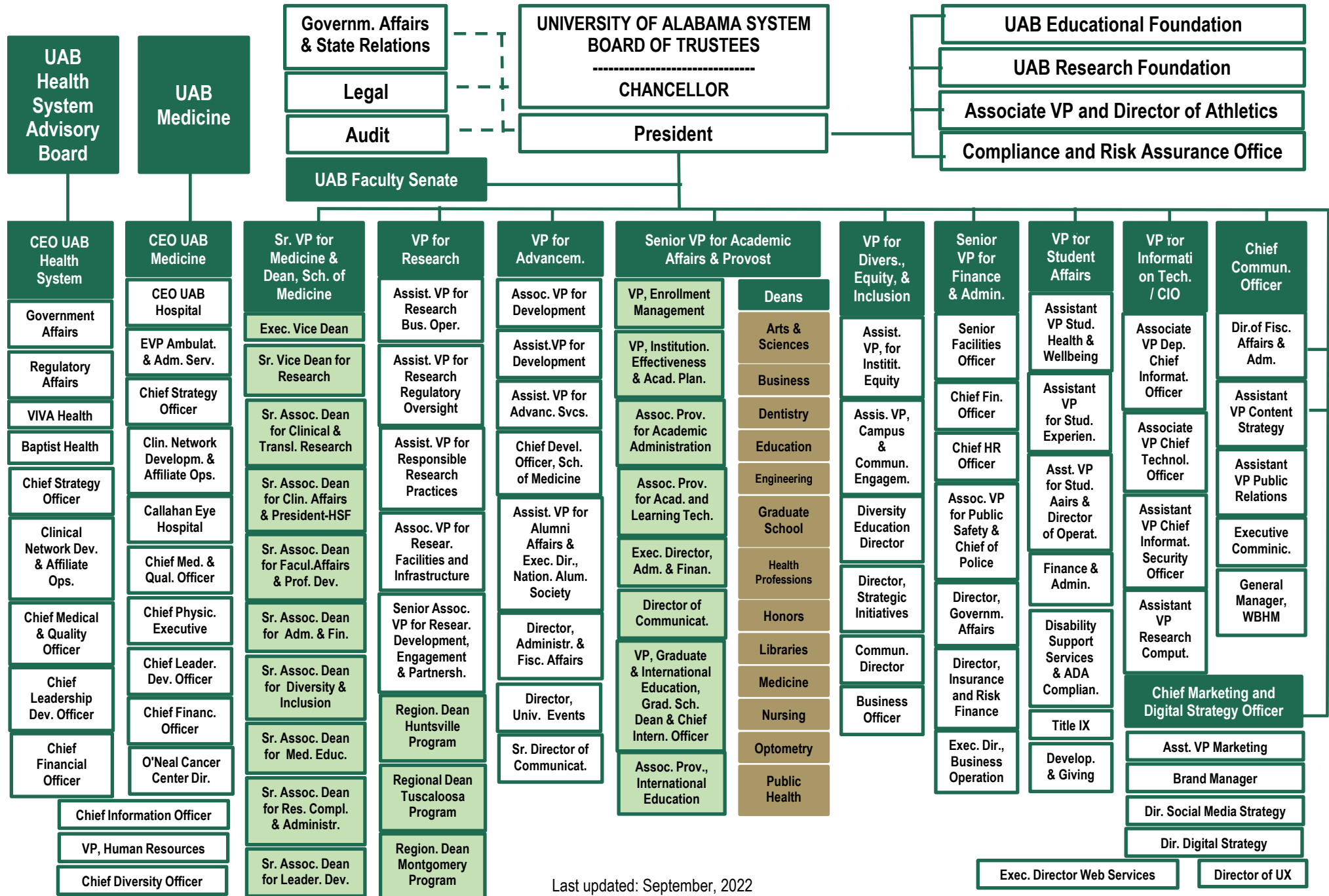


Last updated: March, 2022

Source: [Organizational chart of the University of Alabama](#)

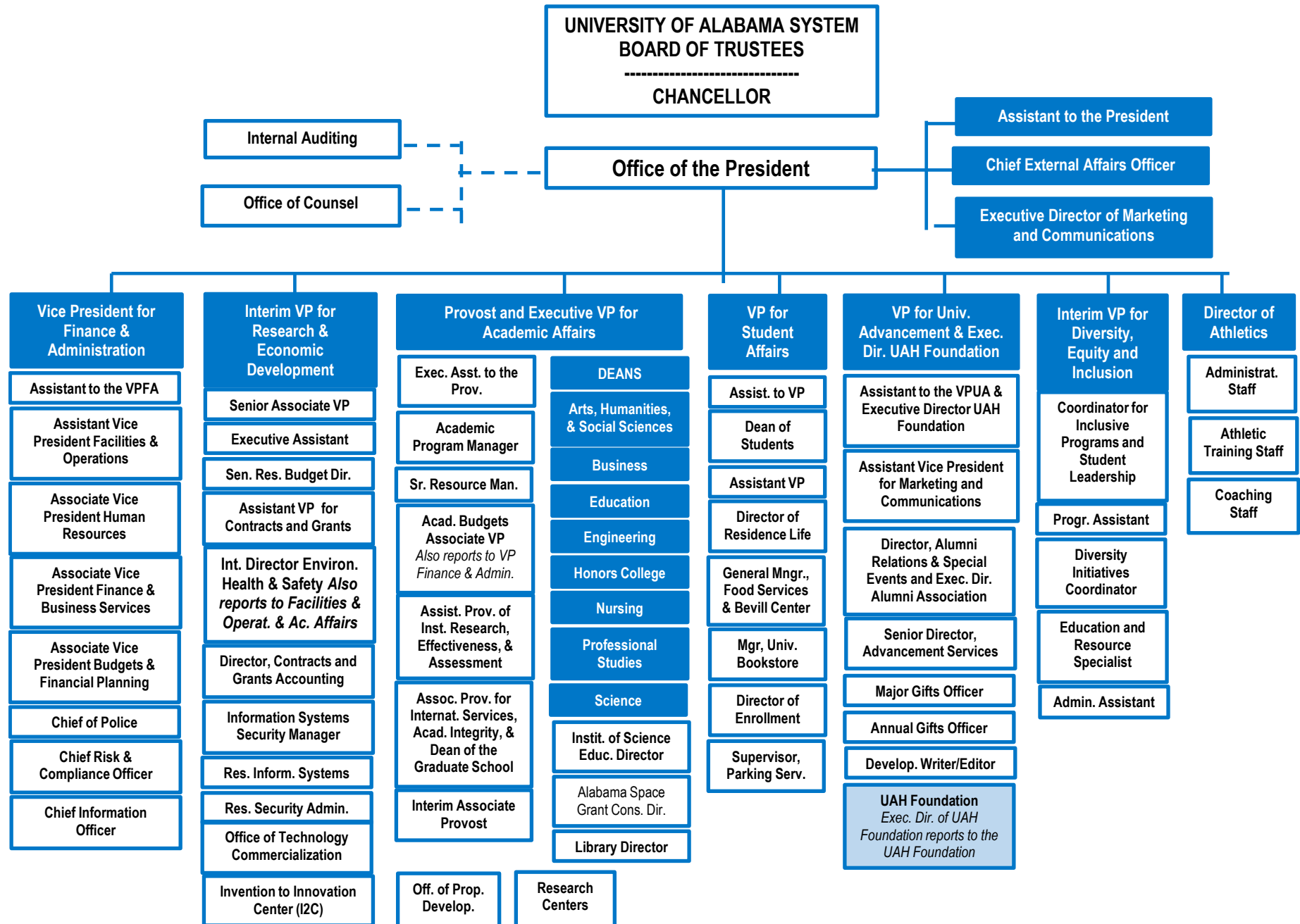


# The University of Alabama at Birmingham Organizational Chart



Last updated: September, 2022

# The University of Alabama in Huntsville Organizational Chart



## Admissions and Test Scores

	2005	2006	2007	2008	2009	2010	2011	2012	2013	2014	2015	2016	2017	2018	2019	2020	2021	2022
<b>UA</b>																		
Applications	10,555	12,522	14,313	18,500	18,967	20,112	22,136	26,409	30,975	33,736	36,203	38,237	38,129	37,302	38,505	39,560	42,421	54,072
Admissions	7,776	8,770	9,140	11,172	11,133	10,776	9,636	14,019	17,515	17,221	19,400	20,107	20,321	22,032	31,835	31,804	33,472	43,290
Acceptance rate	74%	70%	64%	60%	59%	54%	44%	53%	57%	51%	54%	53%	53%	59%	83%	80%	79%	80%
Enrollment	3,739	4,378	4,538	5,116	5,148	5,563	5,766	6,397	6,454	6,824	7,211	7,559	7,407	6,663	6,764	6,507	7,593	8,037
Yield rate	48%	50%	50%	46%	46%	52%	60%	46%	37%	40%	37%	38%	36%	30%	21%	20%	23%	19%
# Submitting SAT	1,292	1,619	1,593	1,720	1,797	1,068	1,200	1,433	1,469	1,590	1,536	1,459	1,397	1,669	1,808	1,492	1,302	1,668
% Submitting SAT	35%	37%	35%	34%	35%	19%	21%	22%	23%	23%	21%	19%	19%	25%	27%	23%	17%	21%
# Submitting ACT	3,223	3,694	3,898	4,439	4,305	4,316	4,447	4,803	4,883	5,208	5,599	6,062	5,981	4,873	4,892	4,986	4,795	4,431
% Submitting ACT	86%	84%	86%	87%	84%	78%	77%	75%	76%	76%	78%	80%	81%	73%	72%	77%	63%	55%
ACT Comp, 25th perc.	20	21	21	21	21	22	22	22	22	22	22	23	23	23	23	23	21	22
ACT Comp, 75th perc.	26	27	27	27	28	29	29	30	30	31	31	31	32	31	31	31	31	31
<b>UAB</b>																		
Applications	4,255	4,221	4,221	5,106	4,418	4,667	5,575	5,575	5,689	5,710	7,672	9,459	7,555	7,845	8,298	10,113	11,906	9,948
Admissions	3,731	3,705	3,705	4,345	3,692	3,847	4,027	4,027	4,934	4,893	4,636	5,499	6,936	7,226	6,112	8,415	10,541	8,622
Acceptance rate	88%	88%	88%	85%	84%	82%	72%	72%	87%	86%	60%	58%	92%	92%	74%	83%	89%	87%
Enrollment	1,587	1,531	1,531	2,213	1,517	1,571	1,605	1,605	1,773	1,748	1,621	2,021	2,299	2,299	2,346	2,154	2,415	2,217
Yield rate	43%	41%	41%	51%	41%	41%	40%	40%	36%	36%	35%	37%	33%	32%	38%	26%	23%	26%
# Submitting SAT	166	150	128	90	92	67	79	79	103	92	106	85	15	7	312	1	166	145
% Submitting SAT	10%	10%	8%	4%	6%	4%	5%	5%	6%	5%	7%	4%	1%	0%	13%	0%	7%	7%
# Submitting ACT	1,376	1,326	1,278	1,185	1,411	1,494	1,500	1,500	1,645	1,628	1,497	1,849	2,093	2,253	2,159	2,119	1,565	1,081
% Submitting ACT	87%	87%	83%	54%	93%	95%	93%	93%	93%	93%	92%	91%	91%	98%	92%	98%	65%	49%
ACT Comp, 25th perc.	20	21	21	21	21	21	21	21	22	21	22	21	21	21	22	22	23	23
ACT Comp, 75th perc.	26	26	27	27	27	27	27	27	28	27	28	28	28	29	29	30	30	30
<b>UAH</b>																		
Applications	1,698	1,809	1,850	1,874	1,924	1,846	1,952	1,938	2,054	2,104	3,308	4,545	4,454	4,543	5,295	5,793	5,781	5,582
Admissions	1,480	1,598	1,628	1,671	1,387	1,221	1,243	1,505	1,656	1,726	2,686	3,467	3,618	3,674	4,372	4,467	4,259	4,360
Acceptance rate	87%	88%	88%	89%	72%	66%	64%	78%	81%	82%	81%	76%	81%	81%	83%	77%	74%	78%
Enrollment	660	838	800	796	802	622	677	624	651	724	1,038	1,213	1,352	1,435	1,497	1,345	1,204	1,172
Yield rate	45%	52%	49%	48%	58%	51%	54%	41%	39%	42%	39%	35%	37%	39%	34%	30%	28%	27%
# Submitting SAT	180	208	195	191	171	113	126	120	118	111	183	166	29	8	108	213	65	96
% Submitting SAT	27%	25%	24%	24%	21%	18%	19%	19%	18%	15%	18%	14%	2%	1%	7%	16%	5%	8%
# Submitting ACT	580	759	730	723	740	575	623	581	610	690	975	1,152	1,292	1,331	1,380	1,252	1,108	964
% Submitting ACT	88%	91%	91%	91%	92%	92%	92%	93%	94%	95%	94%	95%	96%	93%	92%	93%	92%	82%
ACT Comp, 25th perc.	22	21	22	22	22	22	22	22	23	24	24	25	25	25	25	24	24	23
ACT Comp, 75th perc.	28	27	27	27	28	29	29	29	29	30	30	31	31	31	31	31	30	30

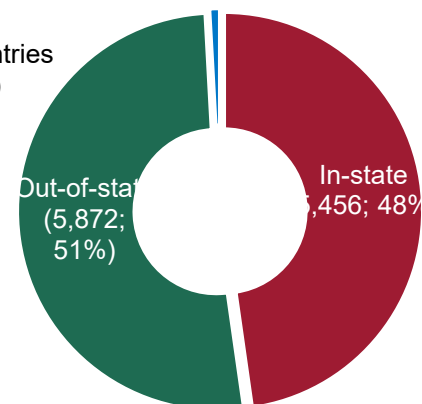
*Data Source (years prior to 2022):* Integrated Postsecondary Education Data System (IPEDS). *Data Source (2022) :* campus preliminary reports.

## First-time Freshmen by Geographic Origin

Fall 2022

11,426

Foreign countries  
(98; 1%)



	1986	1996	1998	2000	2002	2004	2005	2006	2008	2010	2012	2013	2014	2016	2018	2019	2020	2021	2022
<b>UA</b>	<b>2,913</b>	<b>2,066</b>	<b>2,616</b>	<b>2,956</b>	<b>2,654</b>	<b>3,367</b>	<b>3,735</b>	<b>4,378</b>	<b>5,116</b>	<b>5,519</b>	<b>6,371</b>	<b>6,454</b>	<b>6,824</b>	<b>7,559</b>	<b>6,663</b>	<b>6,764</b>	<b>6,507</b>	<b>7,593</b>	<b>8,037</b>
In-state	1,864	1,384	1,941	2,214	2,028	2,441	2,592	2,898	3,221	3,121	2,846	2,578	2,462	2,412	2,271	2,533	2,701	2,851	2,799
% In-state	64%	67%	74%	75%	76%	72%	69%	66%	63%	57%	45%	40%	36%	32%	34%	37%	42%	38%	35%
Out-of-state	1,013	645	651	719	602	909	1,137	1,451	1,880	2,339	3,327	3,714	4,269	5,089	4,267	4,150	3,772	4,701	5,190
Foreign countries	36	37	24	23	24	17	6	29	15	59	198	162	93	58	125	81	34	41	48
<b>UAB</b>	<b>973</b>	<b>1,131</b>	<b>1,175</b>	<b>1,314</b>	<b>1,471</b>	<b>1,628</b>	<b>1,587</b>	<b>1,531</b>	<b>1,277</b>	<b>1,571</b>	<b>1,676</b>	<b>1,773</b>	<b>1,748</b>	<b>2,021</b>	<b>2,299</b>	<b>2,346</b>	<b>2,154</b>	<b>2,415</b>	<b>2,217</b>
In-state	921	1,038	1,093	1,185	1,337	1,474	1,430	1,377	1,155	1,407	1,452	1,529	1,471	1,712	1,917	1,954	1,763	1,989	1,821
% In-state	95%	92%	93%	90%	91%	91%	90%	90%	90%	90%	87%	86%	84%	85%	83%	83%	82%	82%	82%
Out-of-state	40	71	51	90	108	123	124	133	104	151	206	225	243	262	353	361	362	401	365
Foreign countries	12	22	31	39	26	31	33	21	18	13	18	19	34	47	29	31	29	25	31
<b>UAH</b>	<b>520</b>	<b>442</b>	<b>480</b>	<b>606</b>	<b>628</b>	<b>680</b>	<b>660</b>	<b>838</b>	<b>796</b>	<b>622</b>	<b>624</b>	<b>651</b>	<b>724</b>	<b>1,213</b>	<b>1,435</b>	<b>1,497</b>	<b>1,345</b>	<b>1,204</b>	<b>1,172</b>
In-state	484	360	383	477	484	559	524	704	650	503	505	514	581	861	913	936	884	816	836
% In-state	93%	81%	80%	79%	77%	82%	79%	84%	82%	81%	81%	79%	80%	71%	64%	63%	66%	68%	71%
Out-of-state	35	60	82	124	132	103	113	105	127	106	109	110	133	323	494	527	446	375	317
Foreign countries	1	22	15	5	12	18	23	29	19	13	10	27	10	29	28	34	15	13	19
<b>Total</b>	<b>4,406</b>	<b>3,639</b>	<b>4,271</b>	<b>4,876</b>	<b>4,753</b>	<b>5,675</b>	<b>5,982</b>	<b>6,747</b>	<b>7,189</b>	<b>7,712</b>	<b>8,671</b>	<b>8,878</b>	<b>9,296</b>	<b>10,793</b>	<b>10,397</b>	<b>10,607</b>	<b>10,006</b>	<b>11,212</b>	<b>11,426</b>

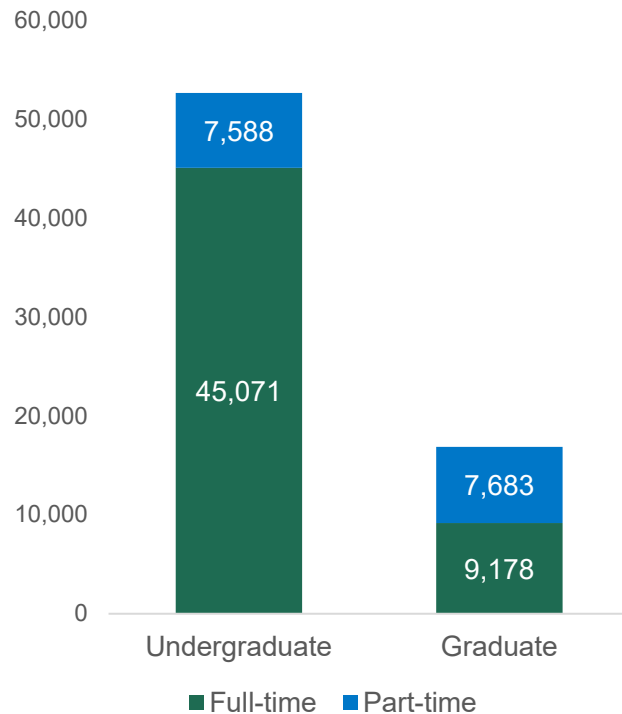
*Data Source (years prior to 2022): Integrated Postsecondary Education Data System (IPEDS). Data Source (2022) : campus preliminary reports.*





Fall 2022 Enrollment

69,520



## Enrollment by Level and Status

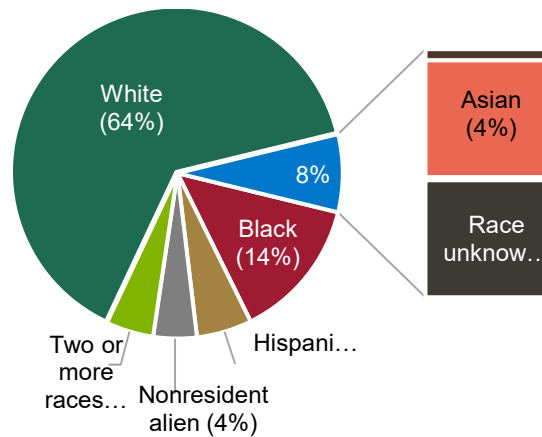
	2013	2014	2015	2016	2017	2018	2019	2020	2021	2022
<b>UA</b>	<b>34,752</b>	<b>36,047</b>	<b>37,098</b>	<b>37,663</b>	<b>38,563</b>	<b>38,390</b>	<b>38,100</b>	<b>37,840</b>	<b>38,316</b>	<b>38,644</b>
<b>Graduate</b>	<b>5,312</b>	<b>5,295</b>	<b>5,140</b>	<b>5,100</b>	<b>5,258</b>	<b>5,362</b>	<b>5,305</b>	<b>6,170</b>	<b>6,631</b>	<b>6,186</b>
Full-time	2,950	3,286	3,321	3,268	3,375	3,452	3,460	3,783	3,771	3,635
Part-time	2,362	2,009	1,819	1,832	1,883	1,910	1,845	2,387	2,860	2,551
<b>Undergraduate</b>	<b>29,440</b>	<b>30,752</b>	<b>31,958</b>	<b>32,563</b>	<b>33,305</b>	<b>33,028</b>	<b>32,795</b>	<b>31,670</b>	<b>31,685</b>	<b>32,458</b>
Full-time	26,548	27,737	28,689	29,220	29,923	29,586	29,135	27,750	28,124	28,958
Part-time	2,892	3,015	3,269	3,343	3,382	3,442	3,660	3,920	3,561	3,500
<b>UAB</b>	<b>18,568</b>	<b>18,698</b>	<b>18,333</b>	<b>19,535</b>	<b>20,902</b>	<b>21,923</b>	<b>22,080</b>	<b>22,563</b>	<b>22,289</b>	<b>21,639</b>
<b>Graduate</b>	<b>7,066</b>	<b>7,019</b>	<b>6,822</b>	<b>7,166</b>	<b>7,768</b>	<b>8,087</b>	<b>8,244</b>	<b>8,685</b>	<b>8,742</b>	<b>8,607</b>
Full-time	3,604	3,862	3,515	3,720	4,057	4,178	4,287	4,478	4,525	4,817
Part-time	3,462	3,157	3,307	3,446	3,711	3,909	3,957	4,207	4,217	3,790
<b>Undergraduate</b>	<b>11,502</b>	<b>11,679</b>	<b>11,511</b>	<b>12,369</b>	<b>13,134</b>	<b>13,836</b>	<b>13,836</b>	<b>13,878</b>	<b>13,547</b>	<b>13,032</b>
Full-time	8,357	8,472	8,297	8,971	9,677	10,042	10,315	10,402	10,401	10,263
Part-time	3,145	3,207	3,214	3,398	3,457	3,794	3,521	3,476	3,146	2,769
<b>UAH</b>	<b>7,376</b>	<b>7,348</b>	<b>7,866</b>	<b>8,468</b>	<b>9,101</b>	<b>9,736</b>	<b>9,988</b>	<b>10,000</b>	<b>9,636</b>	<b>9,237</b>
<b>Graduate</b>	<b>1,680</b>	<b>1,730</b>	<b>1,853</b>	<b>1,961</b>	<b>2,011</b>	<b>2,065</b>	<b>1,999</b>	<b>1,973</b>	<b>2,067</b>	<b>2,068</b>
Full-time	565	631	708	760	742	732	601	615	674	726
Part-time	1,115	1,099	1,145	1,201	1,269	1,333	1,398	1,358	1,393	1,342
<b>Undergraduate</b>	<b>5,696</b>	<b>5,618</b>	<b>6,013</b>	<b>6,507</b>	<b>7,090</b>	<b>7,671</b>	<b>7,989</b>	<b>8,027</b>	<b>7,569</b>	<b>7,169</b>
Full-time	4,237	4,304	4,774	5,257	5,903	6,393	6,749	6,730	6,223	5,850
Part-time	1,459	1,314	1,239	1,250	1,187	1,278	1,240	1,297	1,346	1,319
<b>Total</b>	<b>60,696</b>	<b>62,093</b>	<b>63,297</b>	<b>65,666</b>	<b>68,566</b>	<b>70,049</b>	<b>70,168</b>	<b>70,403</b>	<b>70,241</b>	<b>69,520</b>

Data Source (years prior to 2022): Integrated Postsecondary Education Data System (IPEDS). Data Source (2022) : campus preliminary reports.



# African American Students

14%



- American Indian or Alaska Native (239; 0.3%)
- Asian (2,492; 4%)
- Black or African American (9,659; 14%)
- Hispanic (3,761; 5%)
- Native Hawaiian or Pacific Islander (64; 0.1%)
- US Nonresident (2,955; 4%)
- Race/ethnicity unknown (2,494; 4%)
- Two or more races (3,230; 5%)
- White (44,626; 64%)

## Enrollment by Race/Ethnicity

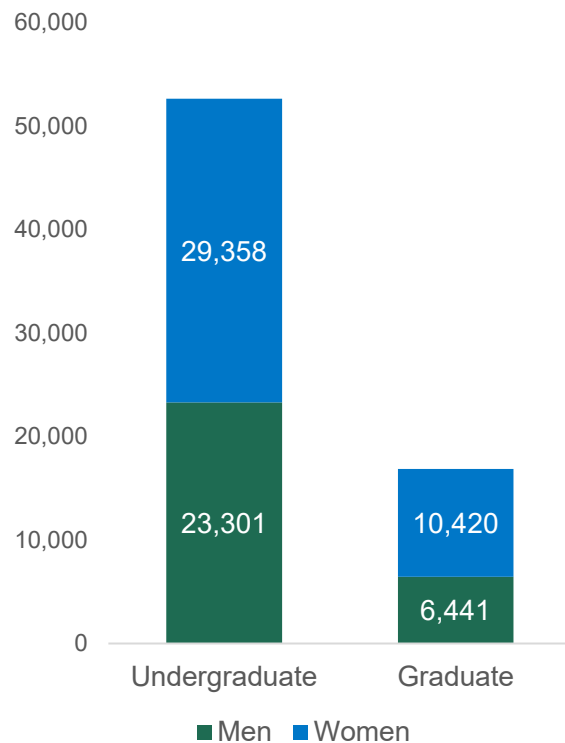
	2013	2014	2015	2016	2017	2018	2019	2020	2021	2022
<b>UA</b>	<b>34,752</b>	<b>36,047</b>	<b>37,098</b>	<b>37,663</b>	<b>38,563</b>	<b>38,390</b>	<b>38,100</b>	<b>37,840</b>	<b>38,316</b>	<b>38,644</b>
American Indian or Alaska Native	152	138	137	146	132	139	147	127	137	134
Asian	406	394	455	481	471	466	494	544	589	608
Black or African American	3,983	4,067	4,123	4,057	4,081	4,038	4,002	4,144	4,277	4,344
Hispanic	1,041	1,214	1,440	1,582	1,736	1,831	1,835	1,870	2,037	2,137
Native Hawaiian or Pacific Islander	37	32	36	37	43	42	43	31	30	41
US Nonresident	1,541	1,687	1,509	1,312	1,171	1,224	1,454	1,176	1,151	1,118
Race/ethnicity unknown	142	144	146	171	209	240	240	247	325	1,355
Two or more races	692	885	943	1,049	1,176	1,242	1,266	1,286	1,277	1,277
White	26,758	27,486	28,309	28,828	29,544	29,168	28,619	28,415	28,493	27,630
<b>UAB</b>	<b>18,568</b>	<b>18,698</b>	<b>18,333</b>	<b>19,535</b>	<b>20,902</b>	<b>21,923</b>	<b>22,080</b>	<b>22,563</b>	<b>22,289</b>	<b>21,639</b>
American Indian or Alaska Native	48	46	48	58	64	59	47	59	52	36
Asian	900	931	1,009	1,094	1,180	1,305	1,380	1,466	1,527	1,551
Black or African American	3,929	3,943	3,851	4,184	4,435	4,795	4,622	4,746	4,758	4,590
Hispanic	488	496	554	593	673	672	977	1,050	1,092	1,111
Native Hawaiian or Pacific Islander	14	14	12	10	8	6	4	8	6	10
US Nonresident	575	665	656	777	970	1,049	1,107	1,084	1,110	1,476
Race/ethnicity unknown	237	200	182	276	298	289	326	826	602	985
Two or more races	524	563	613	672	744	828	781	358	825	825
White	11,853	11,840	11,408	11,871	12,530	12,920	12,836	12,966	12,317	11,055
<b>UAH</b>	<b>7,376</b>	<b>7,348</b>	<b>7,866</b>	<b>8,468</b>	<b>9,101</b>	<b>9,736</b>	<b>9,988</b>	<b>10,000</b>	<b>9,636</b>	<b>9,237</b>
American Indian or Alaska Native	94	96	97	99	102	97	95	77	70	71
Asian	276	268	292	328	354	364	352	356	344	358
Black or African American	863	826	889	896	947	946	894	910	893	833
Hispanic	224	248	284	317	383	458	506	530	524	555
Native Hawaiian or Pacific Islander	1	1	0	0	7	6	20	16	15	16
US Nonresident	450	452	508	522	491	449	411	341	298	361
Race/ethnicity unknown	244	257	250	284	82	383	483	504	474	347
Two or more races	107	109	136	135	206	245	303	364	357	354
White	5,117	5,091	5,410	5,887	6,529	6,788	6,924	6,902	6,661	6,342
<b>Total</b>	<b>60,696</b>	<b>62,093</b>	<b>63,297</b>	<b>65,666</b>	<b>68,566</b>	<b>70,049</b>	<b>70,168</b>	<b>70,403</b>	<b>70,241</b>	<b>69,520</b>

Data Source (years prior to 2022): Integrated Postsecondary Education Data System (IPEDS). Data Source (2022) : campus preliminary reports.



Female Students

57%



## Enrollment by Level and Gender

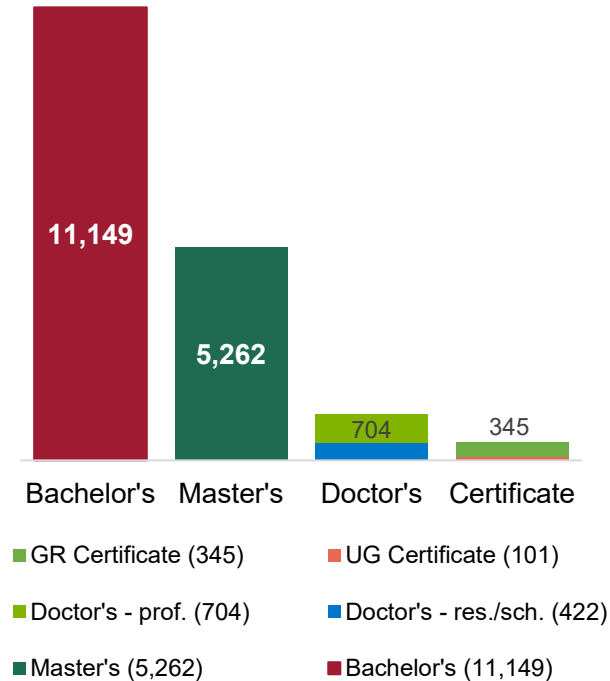
	2013	2014	2015	2016	2017	2018	2019	2020	2021	2022
<b>UA</b>	<b>34,752</b>	<b>36,047</b>	<b>37,098</b>	<b>37,663</b>	<b>38,563</b>	<b>38,390</b>	<b>38,100</b>	<b>37,840</b>	<b>38,316</b>	<b>38,644</b>
Undergraduate	29,440	30,752	31,958	32,563	33,305	33,028	32,795	31,670	31,685	32,458
Men	13,556	14,066	14,424	14,451	14,689	14,586	14,518	13,833	13,780	14,152
Women	15,884	16,686	17,534	18,112	18,616	18,442	18,277	17,837	17,905	18,306
Graduate	5,312	5,295	5,140	5,100	5,258	5,362	5,305	6,170	6,631	6,186
Men	2,207	2,165	2,140	2,138	2,181	2,120	2,094	2,308	2,448	2,354
Women	3,105	3,130	3,000	2,962	3,077	3,242	3,211	3,862	4,183	3,832
<b>UAB</b>	<b>18,568</b>	<b>18,698</b>	<b>18,333</b>	<b>19,535</b>	<b>20,902</b>	<b>21,923</b>	<b>22,080</b>	<b>22,563</b>	<b>22,289</b>	<b>21,639</b>
Undergraduate	11,502	11,679	11,511	12,369	13,134	13,836	13,836	13,878	13,547	13,032
Men	4,780	4,877	4,748	5,059	5,325	5,419	5,356	5,314	5,129	4,884
Women	6,722	6,802	6,763	7,310	7,809	8,417	8,480	8,564	8,418	8,148
Graduate	7,066	7,019	6,822	7,166	7,768	8,087	8,244	8,685	8,742	8,607
Men	2,529	2,533	2,437	2,531	2,783	2,944	2,862	2,929	2,982	3,019
Women	4,537	4,486	4,385	4,635	4,985	5,143	5,382	5,756	5,760	5,588
<b>UAH</b>	<b>7,376</b>	<b>7,348</b>	<b>7,866</b>	<b>8,468</b>	<b>9,101</b>	<b>9,736</b>	<b>9,988</b>	<b>10,000</b>	<b>9,636</b>	<b>9,237</b>
Undergraduate	5,696	5,618	6,013	6,507	7,090	7,671	7,989	8,027	7,569	7,169
Men	3,177	3,210	3,449	3,781	4,097	4,421	4,614	4,717	4,475	4,265
Women	2,519	2,408	2,564	2,726	2,993	3,250	3,375	3,310	3,094	2,904
Graduate	1,680	1,730	1,853	1,961	2,011	2,065	1,999	1,973	2,067	2,068
Men	959	967	1,015	1,052	1,023	1,000	959	935	1,010	1,068
Women	721	763	838	909	988	1,065	1,040	1,038	1,057	1,000
<b>Total</b>	<b>60,696</b>	<b>62,093</b>	<b>63,297</b>	<b>65,666</b>	<b>68,566</b>	<b>70,049</b>	<b>70,168</b>	<b>70,403</b>	<b>70,241</b>	<b>69,520</b>

Data Source (years prior to 2022): Integrated Postsecondary Education Data System (IPEDS). Data Source (2022) : campus preliminary reports.



2021-22  
Degrees and Certificates

17,983



Degrees and Certificates Awarded

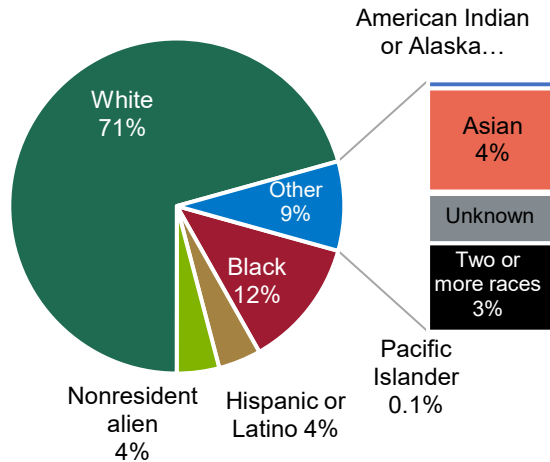
	12-13	13-14	14-15	15-16	16-17	17-18	18-19	19-20	20-21	21-22
<b>UA</b>	<b>7,190</b>	<b>7,582</b>	<b>7,905</b>	<b>8,491</b>	<b>8,564</b>	<b>8,881</b>	<b>9,098</b>	<b>9,668</b>	<b>9,612</b>	<b>9,355</b>
Bachelor's	5,000	5,408	5,662	6,354	6,501	6,750	6,912	7,429	7,363	6,740
Master's	1,659	1,645	1,672	1,650	1,578	1,681	1,750	1,831	1,859	2,180
Doctor's - res./sch.	234	211	264	240	245	232	229	193	203	215
Doctor's - prof.	259	290	259	209	192	196	187	190	161	181
Graduate certificate	38	28	48	38	48	22	20	25	26	39
<b>UAB</b>	<b>4,367</b>	<b>4,291</b>	<b>4,500</b>	<b>4,430</b>	<b>4,921</b>	<b>5,225</b>	<b>5,596</b>	<b>5,911</b>	<b>6,256</b>	<b>6,318</b>
Bachelor's	2,195	2,042	2,165	2,205	2,384	2,463	2,553	2,680	2,898	2,785
Master's	1,540	1,597	1,680	1,618	1,803	1,986	2,207	2,332	2,433	2,512
Doctor's - res./sch.	147	166	170	149	126	161	146	151	149	166
Doctor's - prof.	387	367	392	360	387	380	412	461	460	504
Doctor's - other	8	5	6	10	6	8	7	6		
Undergraduate cert.	20	21	18	15	43	47	76	74	71	80
Graduate certificate	70	93	69	73	172	180	195	207	245	271
<b>UAH</b>	<b>1,610</b>	<b>1,599</b>	<b>1,603</b>	<b>1,655</b>	<b>1,700</b>	<b>1,911</b>	<b>1,972</b>	<b>2,270</b>	<b>2,284</b>	<b>2,310</b>
Bachelor's degree	1,099	1,070	1,106	1,062	1,055	1,230	1,320	1,470	1,635	1,624
Master's degree	444	466	424	484	539	564	528	647	516	570
Doctor's - res./sch.	28	30	33	34	41	25	38	50	40	41
Doctor's - prof.	10	4	13	17	18	25	34	41	37	19
Undergraduate cert.		1	4	0	4	8	12	15	13	21
Graduate certificate	29	28	23	58	43	59	40	47	43	35
<b>UAS Total</b>	<b>13,167</b>	<b>13,472</b>	<b>14,008</b>	<b>14,576</b>	<b>15,185</b>	<b>16,017</b>	<b>16,666</b>	<b>17,849</b>	<b>18,152</b>	<b>17,983</b>

Data Source (years prior to 2021-22): Integrated Postsecondary Education Data System (IPEDS). Data Source (2022): campus preliminary reports.



2021-22 Degrees and Certificates  
Conferred to African American Students

12%



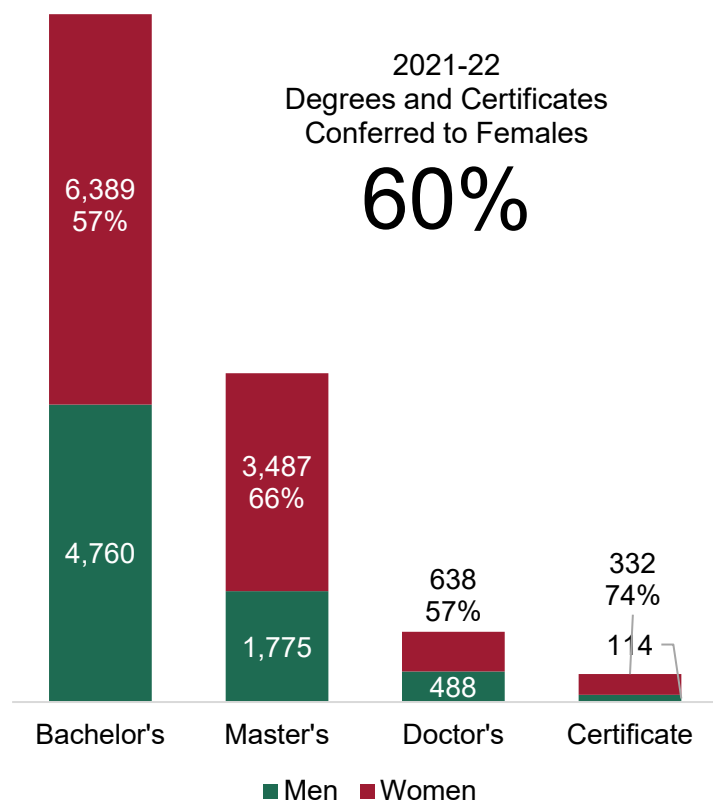
- American Indian or Alaska Native (50; 0.3%)
- Asian (637; 4%)
- Black or African American (2,247; 12%)
- Hispanic or Latino (739; 4%)
- Native Hawaiian or Other Pacific Islander (14; 0.1%)
- US Nonresident (736; 4%)
- Race/ethnicity unknown (305; 2%)
- Two or more races (545; 3%)
- White (12,710; 71%)

## Degrees and Certificates by Race/Ethnicity

	12-13	13-14	14-15	15-16	16-17	17-18	18-19	19-20	20-21	21-22
<b>UA</b>	<b>7,190</b>	<b>7,582</b>	<b>7,905</b>	<b>8,491</b>	<b>8,564</b>	<b>8,881</b>	<b>9,098</b>	<b>9,668</b>	<b>9,612</b>	<b>9,355</b>
American Indian or Alaska Native	31	41	37	30	37	24	34	36	26	29
Asian	89	106	74	107	124	102	122	116	111	126
Black or African American	798	792	882	869	841	889	935	946	863	865
Hispanic or Latino	154	192	194	269	265	333	355	470	452	431
Native Hawaiian or Other Pacific Island	1	8	4	12	4	9	5	16	9	9
US Nonresident	210	285	310	358	400	319	301	324	290	326
Race/ethnicity unknown	26	41	36	36	25	45	42	61	61	64
Two or more races	46	99	130	163	185	221	234	255	319	285
White	5,835	6,018	6,238	6,647	6,683	6,939	7,070	7,444	7,481	7,220
<b>UAB</b>	<b>4,367</b>	<b>4,291</b>	<b>4,500</b>	<b>4,430</b>	<b>4,921</b>	<b>5,225</b>	<b>5,596</b>	<b>5,911</b>	<b>6,256</b>	<b>6,318</b>
American Indian or Alaska Native	10	10	44	14	10	15	15	12	16	11
Asian	211	204	208	215	280	302	316	364	400	424
Black or African American	813	820	805	777	896	918	1,018	1,063	1,200	1,179
Hispanic or Latino	97	100	118	128	159	166	216	213	222	217
Native Hawaiian or Other Pacific Island	1	5	4	5	5	4	4	3		2
US Nonresident	135	154	164	168	213	254	288	333	365	316
Race/ethnicity unknown	87	50	45	44	51	65	88	80	100	122
Two or more races	63	100	74	128	154	150	176	174	215	208
White	2,950	2,848	3,038	2,951	3,153	3,351	3,475	3,669	3,738	3,839
<b>UAH</b>	<b>1,610</b>	<b>1,599</b>	<b>1,603</b>	<b>1,655</b>	<b>1,700</b>	<b>1,911</b>	<b>1,972</b>	<b>2,270</b>	<b>2,284</b>	<b>2,310</b>
American Indian or Alaska Native	32	20	17	18	31	25	18	30	24	10
Asian	55	58	62	53	70	92	72	85	96	87
Black or African American	148	180	137	173	169	173	182	170	185	203
Hispanic or Latino	32	29	29	41	40	37	50	93	88	91
Native Hawaiian or Other Pacific Islander				1	1		2	2	2	3
US Nonresident	109	98	130	139	171	148	146	134	98	94
Race/ethnicity unknown	39	33	59	56	47	85	163	92	65	119
Two or more races	11	28	16	37	19	28	31	38	38	52
White	1,184	1,153	1,153	1,137	1,152	1,323	1,308	1,626	1,688	1,651
<b>UAS Total</b>	<b>13,167</b>	<b>13,472</b>	<b>14,008</b>	<b>14,576</b>	<b>15,185</b>	<b>16,017</b>	<b>16,666</b>	<b>17,849</b>	<b>18,152</b>	<b>17,983</b>

Data Source (years prior to 202122): Integrated Postsecondary Education Data System (IPEDS). Data Source (2021-22): campus preliminary reports.





## Degrees and Certificates by Gender

	12-13	13-14	14-15	15-16	16-17	17-18	18-19	19-20	20-21	21-22
<b>UA</b>	<b>7,190</b>	<b>7,582</b>	<b>7,905</b>	<b>8,491</b>	<b>8,564</b>	<b>8,881</b>	<b>9,098</b>	<b>9,668</b>	<b>9,612</b>	<b>9,355</b>
<b>Bachelor's</b>	<b>5,000</b>	<b>5,408</b>	<b>5,662</b>	<b>6,354</b>	<b>6,501</b>	<b>6,750</b>	<b>6,912</b>	<b>7,429</b>	<b>7,363</b>	<b>6,740</b>
Men	2,213	2,449	2,427	2,777	2,836	2,877	2,917	3,178	3,058	2,850
Women	2,787	2,959	3,235	3,577	3,665	3,873	3,995	4,251	4,305	3,890
<b>Master's</b>	<b>1,659</b>	<b>1,645</b>	<b>1,672</b>	<b>1,650</b>	<b>1,578</b>	<b>1,681</b>	<b>1,750</b>	<b>1,831</b>	<b>1,859</b>	<b>2,180</b>
Men	654	656	630	654	623	688	642	681	694	759
Women	1,005	989	1,042	996	955	993	1,108	1,150	1,165	1,421
<b>Doctor's</b>	<b>493</b>	<b>501</b>	<b>523</b>	<b>449</b>	<b>437</b>	<b>428</b>	<b>416</b>	<b>383</b>	<b>364</b>	<b>396</b>
Men	217	228	227	211	194	201	197	189	175	176
Women	276	273	296	238	243	227	219	194	189	220
<b>Certificate</b>	<b>38</b>	<b>28</b>	<b>48</b>	<b>38</b>	<b>48</b>	<b>22</b>	<b>20</b>	<b>25</b>	<b>26</b>	<b>39</b>
Men	7	8	10	5	18	6	6	7	5	6
Women	31	20	38	33	30	16	14	18	21	33
<b>UAB</b>	<b>4,367</b>	<b>4,291</b>	<b>4,500</b>	<b>4,430</b>	<b>4,921</b>	<b>5,225</b>	<b>5,596</b>	<b>5,911</b>	<b>6,256</b>	<b>6,318</b>
<b>Bachelor's</b>	<b>2,195</b>	<b>2,042</b>	<b>2,165</b>	<b>2,205</b>	<b>2,384</b>	<b>2,463</b>	<b>2,553</b>	<b>2,680</b>	<b>2,898</b>	<b>2,785</b>
Men	853	800	823	873	942	986	1,006	974	1,053	1,003
Women	1,342	1,242	1,342	1,332	1,442	1,477	1,547	1,706	1,845	1,782
<b>Master's</b>	<b>1,540</b>	<b>1,597</b>	<b>1,680</b>	<b>1,618</b>	<b>1,803</b>	<b>1,986</b>	<b>2,207</b>	<b>2,332</b>	<b>2,433</b>	<b>2,512</b>
Men	491	509	530	530	590	650	757	788	794	772
Women	1,049	1,088	1,150	1,088	1,213	1,336	1,450	1,544	1,639	1,740
<b>Doctor's</b>	<b>542</b>	<b>538</b>	<b>568</b>	<b>519</b>	<b>519</b>	<b>549</b>	<b>565</b>	<b>618</b>	<b>609</b>	<b>670</b>
Men	237	229	267	267	235	229	232	253	251	276
Women	305	309	301	252	284	320	333	365	358	394
<b>Certificate</b>	<b>90</b>	<b>114</b>	<b>87</b>	<b>88</b>	<b>215</b>	<b>227</b>	<b>271</b>	<b>281</b>	<b>316</b>	<b>351</b>
Men	14	15	13	21	53	67	101	71	72	88
Women	76	99	74	67	162	160	170	210	244	263
<b>UAH</b>	<b>1,610</b>	<b>1,599</b>	<b>1,603</b>	<b>1,655</b>	<b>1,700</b>	<b>1,911</b>	<b>1,972</b>	<b>2,270</b>	<b>2,284</b>	<b>2,310</b>
<b>Bachelor's</b>	<b>1,099</b>	<b>1,070</b>	<b>1,106</b>	<b>1,062</b>	<b>1,055</b>	<b>1,230</b>	<b>1,320</b>	<b>1,470</b>	<b>1,635</b>	<b>1,624</b>
Men	538	513	583	567	587	647	710	746	900	907
Women	561	557	523	495	468	583	610	724	735	717
<b>Master's</b>	<b>444</b>	<b>466</b>	<b>424</b>	<b>484</b>	<b>539</b>	<b>564</b>	<b>528</b>	<b>647</b>	<b>516</b>	<b>570</b>
Men	237	238	234	255	284	291	253	312	224	244
Women	207	228	190	229	255	273	275	335	292	326
<b>Doctor's</b>	<b>38</b>	<b>34</b>	<b>46</b>	<b>51</b>	<b>59</b>	<b>50</b>	<b>72</b>	<b>91</b>	<b>77</b>	<b>60</b>
Men	23	23	27	25	31	20	28	40	33	36
Women	15	11	19	26	28	30	44	51	44	24
<b>Certificate</b>	<b>29</b>	<b>29</b>	<b>27</b>	<b>58</b>	<b>47</b>	<b>67</b>	<b>52</b>	<b>62</b>	<b>56</b>	<b>56</b>
Men	11	14	10	18	21	14	21	23	23	20
Women	18	15	17	40	26	53	31	39	33	36
<b>Total</b>	<b>13,167</b>	<b>13,472</b>	<b>14,008</b>	<b>14,576</b>	<b>15,185</b>	<b>16,017</b>	<b>16,666</b>	<b>17,849</b>	<b>18,152</b>	<b>17,983</b>

Data Source (years prior to 2021-22): Integrated Postsecondary Education Data System (IPEDS). Data Source (2021-22): campus preliminary reports.

2020-21  
Bachelor's Degrees  
**UA:**  
**7,363**  
Top 10  
Program Areas

52 Business, management, marketing, and related support services (2,147; 29%)	14 Engineering (882; 12%)	51 Health professions and related programs (793; 11%)	09 Communication, journalism, and related programs (646; 9%)	45 Social sciences (487; 7%)	26 Biol. and biomed. sciences (299;...)	Other (841; 11%)
			19 Family and consumer sciences/human sciences (562; 8%)	42 Psychol... (284; 4%)	31 Parks, recrea... leisure, fitness... 13 Edu... (193; 3%)	

**Bachelor's Degrees by 2-Digit CIP Code by Race: UA**

	American Indian	Asian	African American	Hispanic	Pacific Islander	Nonresident alien	White	Two or more races	Unknown	Total
52 Business, management, marketing, and related support services	6	20	115	97	3	26	1,803	71	6	2,147
14 Engineering	1	10	29	39		93	668	34	8	882
51 Health professions and related programs	5	11	91	56	1	1	600	26	2	793
09 Communication, journalism, and related programs	1	4	69	34	1	7	508	21	1	646
19 Family and consumer sciences/human sciences	2	7	85	32		7	407	18	4	562
45 Social sciences	2	5	51	34			367	23	5	487
26 Biological and biomedical sciences		6	19	18			239	14	3	299
42 Psychology	2	1	40	16	1	1	213	10		284
31 Parks, recreation, leisure, fitness, and kinesiology		1	31	9		4	175	7	2	229
13 Education			4	5		2	178	3	1	193
50 Visual and performing arts		3	20	5	1	1	131	10	1	172
11 Computer and information sciences and support services		5	7	1		4	87	5		109
30 Multi/interdisciplinary studies	1		18	3			74	2		98
23 English language and literature/letters			10	3			59	3		75
54 History		3	3	3	1		59	2		71
27 Mathematics and statistics		2	3	1		4	55			65
40 Physical sciences			3	2		3	56			64
44 Public administration and social service professions	1	1	17	1			30	3		53
16 Foreign languages, literatures, and linguistics			2	3			41	4	1	51
03 Natural resources and conservation			1	1			43			45
38 Philosophy and religious studies			1	1			21		1	24
05 Area, ethnic, cultural, gender, and group studies			5	1			8			14

Source: Integrated Postsecondary Education Data System (IPEDS)

2020-21  
Bachelor's Degrees  
**UAB:**  
**2,898**  
**Top 10**  
**Program Areas**

51 Health professions and related programs (618; 21%)	52 Business, management, marketing, and related support services (575; 20%)	26 Biological and biomedical sciences (334; 12%)	42 Psychology (212; 7%)	14 Engineering (166; 6%)	43 Homeland security (115; 4%)	Other (410; 14%)
			13 Education (198; 7%)	09 Comm... (99; 3%)	24 Liberal arts and sciences (97; 3%)	
					50 Visual and performing arts...	

**Bachelor's Degrees by 2-Digit CIP Code by Race: UAB**

	American Indian	Asian	African American	Hispanic	Pacific Islander	Nonresident alien	White	Two or more races	Unknown	Total
51 Health professions and related programs	1	37	162	26		6	359	26	1	<b>618</b>
52 Business, management, marketing, and related support services	1	34	104	32		20	355	27	2	<b>575</b>
26 Biological and biomedical sciences	2	63	60	21		8	157	22	1	<b>334</b>
42 Psychology		11	64	8		3	114	12		<b>212</b>
13 Education		5	63	8		2	111	6	3	<b>198</b>
14 Engineering	1	9	12	13		18	108	4	1	<b>166</b>
43 Homeland security, law enforcement, firefighting, and related protective services		5	45	6		3	51	4	1	<b>115</b>
09 Communication, journalism, and related programs	1		37				57	4		<b>99</b>
24 Liberal arts and sciences, general studies, and humanities		4	45			3	42	1	2	<b>97</b>
50 Visual and performing arts		3	13	4		2	46	5	1	<b>74</b>
45 Social sciences		1	19	1		2	41	6	1	<b>71</b>
11 Computer and information sciences and support services		12	10	1		6	38	1		<b>68</b>
44 Public administration and social service professions		1	21	4			28	4		<b>58</b>
40 Physical sciences	1	8	13	1			30	3		<b>56</b>
23 English language and literature/letters		1	6	2			29	4		<b>42</b>
54 History			1	3			37	1		<b>42</b>
27 Mathematics and statistics		1	5	2		3	22			<b>33</b>
38 Philosophy and religious studies		4	5				9	1	1	<b>20</b>
16 Foreign languages, literatures, and linguistics			3	1			9	1		<b>14</b>
05 Area, ethnic, cultural, gender, and group studies			6							<b>6</b>

Source: Integrated Postsecondary Education Data System (IPEDS)

2020-21  
Bachelor's Degrees  
**UAH:**  
**1,635**  
**Top 10**  
**Program Areas**

14 Engineering (499; 31%)	52 Business, management, marketing, and related support services (318; 19%)	51 Health professions and related programs (221; 14%)	11 Computer and information sciences and support services (114;...)	50 Visual and perfor... arts (67; 4%)	40 Physical sciences (63; 4%)	Other (146; 9%)
			26 Biological and biomedical sciences (83;...)	31 Parks, recre... leisure, fitness...	23 English language...	
					13 Education...	

**Bachelor's Degrees by 2-Digit CIP Code by Race: UAH**

	American Indian	Asian	African American	Hispanic	Pacific Islander	Nonresident alien	White	Two or more races	Unknown	Total
14 Engineering	6	19	15	22		9	416	8	4	<b>499</b>
52 Business, management, marketing, and related support services	6	14	31	17	1	10	223	10	6	<b>318</b>
51 Health professions and related programs	3	9	30	8			166		5	<b>221</b>
11 Computer and information sciences and support services		8	7	6		5	85	2	1	<b>114</b>
26 Biological and biomedical sciences	3	7	8	7		1	55	2		<b>83</b>
50 Visual and performing arts		2	12	1		2	47	2	1	<b>67</b>
40 Physical sciences	1	1	5	1		1	53	1		<b>63</b>
31 Parks, recreation, leisure, fitness, and kinesiology		2	6	3		3	33	1		<b>48</b>
23 English language and literature/letters	1	1	1				33	3	1	<b>40</b>
13 Education			4	1			30	1		<b>36</b>
42 Psychology		1	4				29	1		<b>35</b>
30 Multi/interdisciplinary studies			3				19		2	<b>24</b>
09 Communication, journalism, and related programs			7	1		1	13	1		<b>23</b>
45 Social sciences			3	2			11		1	<b>17</b>
27 Mathematics and statistics		2		1			12			<b>15</b>
54 History				1			11			<b>12</b>
16 Foreign languages, literatures, and linguistics				2			9			<b>11</b>
38 Philosophy and religious studies				2			7			<b>9</b>

Source: Integrated Postsecondary Education Data System (IPEDS)

UAS Data Summary, January 2022



2020-21  
Bachelor's Degrees  
**UAS:**  
**11,896**  
**Top 10**  
**Program Areas**

52 Business, management, marketing, and related support services (3,040; 26%)	51 Health professions and related programs (1,632; 14%)	14 Engineering (1,547; 13%)	09 Communicat... journalism, and related programs...	45 Social sciences (575; 5%)	19 Family and consumer sciences/human...	Other (1,785; 15%)
			26 Biological and biomedical sciences (716...	42 Psycholo... (531; 4%)	13 Education (427; 4%)	
					50 Visual and performing ar...	

**Bachelor's Degrees by 2-Digit CIP Code by Race: UAS**

	American Indian	Asian	African American	Hispanic	Pacific Islander	Nonresident alien	White	Two or more races	Unknown	Total
52 Business, management, marketing, and related support services	13	68	250	146	4	56	2,381	108	14	<b>3,040</b>
51 Health professions and related programs	9	57	283	90	1	7	1,125	52	8	<b>1,632</b>
14 Engineering	8	38	56	74		120	1,192	46	13	<b>1,547</b>
09 Communication, journalism, and related programs	2	4	113	35	1	8	578	26	1	<b>768</b>
26 Biological and biomedical sciences	5	76	87	46		9	451	38	4	<b>716</b>
45 Social sciences	2	6	73	37		2	419	29	7	<b>575</b>
19 Family and consumer sciences/human sciences	2	7	85	32		7	407	18	4	<b>562</b>
42 Psychology	2	13	108	24	1	4	356	23		<b>531</b>
13 Education		5	71	14		4	319	10	4	<b>427</b>
50 Visual and performing arts		8	45	10	1	5	224	17	3	<b>313</b>
11 Computer and information sciences and support services		25	24	8		15	210	8	1	<b>291</b>
31 Parks, recreation, leisure, fitness, and kinesiology		3	37	12		7	208	8	2	<b>277</b>
40 Physical sciences	2	9	21	4		4	139	4		<b>183</b>
23 English language and literature/letters	1	2	17	5			121	10	1	<b>157</b>
54 History		3	4	7	1		107	3		<b>125</b>
30 Multi/interdisciplinary studies	1		21	3			93	2	2	<b>122</b>
43 Homeland security, law enforcement, firefighting and related protective services		5	45	6		3	51	4	1	<b>115</b>
27 Mathematics and statistics		5	8	4		7	89			<b>113</b>
44 Public administration and social service professions	1	2	38	5			58	7		<b>111</b>
24 Liberal arts and sciences, general studies and humanities		4	45			3	42	1	2	<b>97</b>
16 Foreign languages, literatures, and linguistics			5	6			59	5	1	<b>76</b>
38 Philosophy and religious studies		4	6	3			37	1	2	<b>53</b>
03 Natural resources and conservation			1	1			43			<b>45</b>
05 Area, ethnic, cultural, gender, and group studies			11	1			8			<b>20</b>

Source: Integrated Postsecondary Education Data System (IPEDS)

2020-21  
Master's Degrees  
**UA:**  
**1,859**  
**Top 10**  
**Program Areas**

52 Business, management, marketing, and related support services (545; 29%)	44 Public administration and social service professions (251; 14%)	19 Family and consumer sciences/human sciences (222; 12%)	51 Health professions and related programs (153; 8%)	14 Engineering (95; 5%)	09 Communication, journalism, and related programs (81; 4%)	Other (242; 13%)
			13 Education (103; 6%)	25 Library science (80; 4%)	45 Social sciences (50; 3%)	
					50 Visual and performing arts (37; 2%)	

**Master's Degrees by 2-Digit CIP Code by Race: UA**

	American Indian	Asian	African American	Hispanic	Pacific Islander	Nonresident alien	White	Two or more races	Unknown	Total
52 Business, management, marketing, and related support services	1	7	34	23		9	450	17	4	<b>545</b>
44 Public administration and social service professions		2	78	7		2	156	5	1	<b>251</b>
19 Family and consumer sciences/human sciences		2	15	10	1	2	180	11	1	<b>222</b>
51 Health professions and related programs	1	4	20	5		3	113	4	3	<b>153</b>
13 Education			9	5		14	73	2		<b>103</b>
14 Engineering		2	1	2		16	72	1	1	<b>95</b>
09 Communication, journalism, and related programs			11	5		3	59	3		<b>81</b>
25 Library science		1	5	3		1	63	2	5	<b>80</b>
45 Social sciences		5	1			3	39	2		<b>50</b>
50 Visual and performing arts			3			1	31	1	1	<b>37</b>
23 English language and literature/letters	1	2				1	26	2		<b>32</b>
42 Psychology			1	2			29			<b>32</b>
22 Legal professions and studies			4	1			24		2	<b>31</b>
40 Physical sciences				3		11	12			<b>26</b>
27 Mathematics and statistics				1		3	15	2		<b>21</b>
31 Parks, recreation, leisure, fitness, and kinesiology			2	1			18			<b>21</b>
11 Computer and information sciences and support services		1	1			2	16			<b>20</b>
26 Biological and biomedical sciences			1			1	17	1		<b>20</b>
05 Area, ethnic, cultural, gender, and group studies	1		3	2			8			<b>14</b>
54 History			1			1	10	1		<b>13</b>
16 Foreign languages, literatures, and linguistics				1		1	6			<b>8</b>
38 Philosophy and religious studies							4			<b>4</b>

Source: Integrated Postsecondary Education Data System (IPEDS)

2020-21  
Master's Degrees  
**UAB:**  
**2,433**  
**Top 10**  
**Program Areas**

51 Health professions and related programs (1,255; 52%)	52 Business, management, marketing, and related support services (342; 14%)	14 Engineering (211; 9%)	26 Biological and biomedical sciences (165; 7%)	
		13 Education (208; 9%)	11 Comp... and infor... scienc... and...	45 Social sciences...
			44 p... a...	09... 43...

**Master's Degrees by 2-Digit CIP Code by Race: UAB**

	American Indian	Asian	African American	Hispanic	Pacific Islander	Nonresident alien	White	Two or more races	Unknown	Total
51 Health professions and related programs	4	62	192	32		51	863	24	27	<b>1,255</b>
52 Business, management, marketing, and related support services	1	16	57	7		30	217	6	8	<b>342</b>
14 Engineering	2	6	27	6		49	104	1	16	<b>211</b>
13 Education		4	37	4		5	150	2	6	<b>208</b>
26 Biological and biomedical sciences		11	37	8		27	72	8	2	<b>165</b>
11 Computer and information sciences and support services		6	6			64	11		1	<b>88</b>
45 Social sciences		1	5			1	30	2	7	<b>46</b>
44 Public administration and social service professions		1	7	1		2	17			<b>28</b>
09 Communication, journalism, and related programs			4	1			11			<b>16</b>
43 Homeland security, law enforcement, firefighting and related protective services		1	5				8	1		<b>15</b>
23 English language and literature/letters							12			<b>12</b>
30 Multi/interdisciplinary studies						1	8	1	1	<b>11</b>
40 Physical sciences						6	4			<b>10</b>
27 Mathematics and statistics		1				3	5			<b>9</b>
54 History							7	1	1	<b>9</b>
42 Psychology				1			5			<b>6</b>
50 Visual and performing arts							2			<b>2</b>

Source: Integrated Postsecondary Education Data System (IPEDS)

2020-21  
Master's Degrees  
**UAH:**  
**516**  
**Top 10**  
**Program Areas**

51 Health professions and related programs (171; 33%)	52 Business, management, marketing, and related support services (107; 21%)	14 Engineering (100; 19%)	11 Computer and information sciences and support services (49; 9%)		40 Phys... scien... (19; 4%)	Ot... (23; 4%) (20; 4%)
			23 Engli... lang... and...	13 Educ... (13; 3%)	26 Biolo... and... 27...	44 Public admi...

**Master's Degrees by 2-Digit CIP Code by Race: UAH**

	American Indian	Asian	African American	Hispanic	Pacific Islander	Nonresident alien	White	Two or more races	Unknown	Total
51 Health professions and related programs	1	8	11	3			131	2	15	<b>171</b>
52 Business, management, marketing, and related support services	1	3	13	5		6	69	2	8	<b>107</b>
14 Engineering		5	1	1	1	17	71		4	<b>100</b>
11 Computer and information sciences and support services		4	1			15	29			<b>49</b>
40 Physical sciences		1	1			2	15			<b>19</b>
23 English language and literature/letters	1		2				11			<b>14</b>
13 Education			1				9		3	<b>13</b>
26 Biological and biomedical sciences		1	1				6			<b>8</b>
44 Public administration and social service professions			2				6			<b>8</b>
27 Mathematics and statistics			1				6			<b>7</b>
42 Psychology							5		2	<b>7</b>
09 Communication, journalism, and related programs						1	4		1	<b>6</b>
54 History							5			<b>5</b>
30 Multi/interdisciplinary studies							2			<b>2</b>

Source: Integrated Postsecondary Education Data System (IPEDS)



2020-21  
Master's Degrees  
**UAS:**  
**4,808**  
**Top 10**  
**Program Areas**

51 Health professions and related programs (1,579; 33%)	52 Business, management, marketing, and related support services (994; 21%)	14 Engineering (406; 8%)	44 Public administration and social service...		19 Family and consumer sciences...		Other (447; 9%)
		13 Education (324; 7%)	26 Biological and biomed... science...	11 Com... and infor... scien...	09 Commu...		
					45 Social sciences...		

**Master's Degrees by 2-Digit CIP Code by Race: UAS**

	American Indian	Asian	African American	Hispanic	Pacific Islander	Nonresident alien	White	Two or more races	Unknown	Total
51 Health professions and related programs	6	74	223	40		54	1,107	30	45	<b>1,579</b>
52 Business, management, marketing, and related support services	3	26	104	35		45	736	25	20	<b>994</b>
14 Engineering	2	13	29	9	1	82	247	2	21	<b>406</b>
13 Education		4	47	9		19	232	4	9	<b>324</b>
44 Public administration and social service professions		3	87	8		4	179	5	1	<b>287</b>
19 Family and consumer sciences/human sciences		2	15	10	1	2	180	11	1	<b>222</b>
26 Biological and biomedical sciences		12	39	8		28	95	9	2	<b>193</b>
11 Computer and information sciences and support services		11	8			81	56		1	<b>157</b>
09 Communication, journalism, and related programs			15	6		4	74	3	1	<b>103</b>
45 Social sciences		6	6			4	69	4	7	<b>96</b>
25 Library science		1	5	3		1	63	2	5	<b>80</b>
23 English language and literature/letters	2	2	2			1	49	2		<b>58</b>
40 Physical sciences		1	1	3		19	31			<b>55</b>
42 Psychology			1	3			39		2	<b>45</b>
50 Visual and performing arts			3			1	33	1	1	<b>39</b>
27 Mathematics and statistics		1	1	1		6	26	2		<b>37</b>
22 Legal professions and studies			4	1			24		2	<b>31</b>
54 History			1			1	22	2	1	<b>27</b>
31 Parks, recreation, leisure, fitness, and kinesiology			2	1			18			<b>21</b>
43 Homeland security, law enforcement, firefighting, and related protective services		1	5				8	1		<b>15</b>
05 Area, ethnic, cultural, gender, and group studies	1		3	2			8			<b>14</b>
30 Multi/interdisciplinary studies						1	10	1	1	<b>13</b>
16 Foreign languages, literatures, and linguistics				1		1	6			<b>8</b>
38 Philosophy and religious studies							4			<b>4</b>

Source: Integrated Postsecondary Education Data System (IPEDS)

UAS Data Summary, January 2022

2020-21  
Doctor's Degrees  
**UA:**  
**364**  
Top 10  
Program Areas

22 Legal professions and studies (122; 34%)	13 Education (54; 15%)	51 Health professions and related programs (42; 12%)	14 Engineering (30; 8%)	40 Physical sciences (19; 5%)	09 Communication, journalism, and related programs (12; 3%)	Other (37; 10%)
			42 Psychology (20; 5%)	45 Social sciences (11; 3%)	52 Business, management, marketing, and related support services (10; 3%)	
					31 Parks, recreation, leisure, fitness, and kinesiology (7; 2%)	

**Doctor's Degrees by 2-Digit CIP Code by Race: UA**

	American Indian	Asian	African American	Hispanic	Pacific Islander	Nonresident alien	White	Two or more races	Unknown	Total
22 Legal professions and studies	1	2	12	6		4	92	1	4	122
13 Education			15	3		4	31	1		54
51 Health professions and related programs			8	3			27	2	2	42
14 Engineering						20	9	1		30
42 Psychology				1		3	16			20
40 Physical sciences		1		1		6	11			19
09 Communication, journalism, and related programs						5	6	1		12
45 Social sciences		2				3	5	1		11
52 Business, management, marketing, and related support services			1			5	3	1		10
31 Parks, recreation, leisure, fitness, and kinesiology			2				5			7
50 Visual and performing arts			1			2	4			7
23 English language and literature/letters							4		2	6
26 Biological and biomedical sciences						1	4			5
27 Mathematics and statistics						5				5
44 Public administration and social service professions			1			2	2			5
11 Computer and information sciences and support services						3	1			4
16 Foreign languages, literatures, and linguistics			1	1						2
54 History							2			2
30 Multi/interdisciplinary studies		1								1

Source: Integrated Postsecondary Education Data System (IPEDS)

2020-21  
Doctor's Degrees  
**UAB:**  
**609**  
**Top 5**  
**Program Areas**

51 Health professions and related programs (481; 79%)	26 Biological and biomedical sciences (68; 11%)			Ot... (27; 4%)
	14 Engin... (12; 2%)	42 Psych... (12; 2%)	30 Mu... int... stu...	

**Doctor's Degrees by 2-Digit CIP Code by Race: UAB**

	American Indian	Asian	African American	Hispanic	Pacific Islander	Nonresident alien	White	Two or more races	Unknown	Total
51 Health professions and related programs	1	72	44	16		3	312	20	13	<b>481</b>
26 Biological and biomedical sciences		3	7	4		12	39	2	1	<b>68</b>
14 Engineering			3			4	4	1		<b>12</b>
42 Psychology							12			<b>12</b>
30 Multi/interdisciplinary studies			5	2			2			<b>9</b>
13 Education			2			2	4			<b>8</b>
31 Parks, recreation, leisure, fitness, and kinesiology		1	1				2	2		<b>6</b>
45 Social sciences			2			1	1	2		<b>6</b>
40 Physical sciences						1	3			<b>4</b>
27 Mathematics and statistics						3				<b>3</b>

Source: Integrated Postsecondary Education Data System (IPEDS)

2020-21  
Doctor's Degrees

UAH:  
77

## Program Areas

51 Health professions and related programs (37; 48%)		14 Engineering (25; 32%)	40 Physical sciences (11; 14%)
		11 Computer and information...	26 Bi...

## Doctor's Degrees by 2-Digit CIP Code by Race: UAH

	American Indian	Asian	African American	Hispanic	Pacific Islander	Nonresident alien	White	Two or more races	Unknown	Total
51 Health professions and related programs		3	8	2			18	1	5	37
14 Engineering	1	1				15	8			25
40 Physical sciences						6	5			11
11 Computer and information sciences and support services		1				1	1			3
26 Biological and biomedical sciences							1			1

Source: Integrated Postsecondary Education Data System (IPEDS)



2020-21  
Doctor's Degrees  
**UAS:**  
**1,050**  
**Top 10**  
**Program Areas**

51 Health professions and related programs (560; 53%)	22 Legal professions and studies (122; 12%)	26 Biological and biomedical sciences (74; 7%)	13 Education (62; 6%)		40 Physical sciences (34; 3%)	Other (57; 5%)
		14 Engineering (67; 6%)	42 Psychology (32; 3%)	45 Social sciences (09...)	31 Parks, recreation, leisure, fitness, and kinesiology	

**Doctor's Degrees by 2-Digit CIP Code by Race: UAS**

	American Indian	Asian	African American	Hispanic	Pacific Islander	Nonresident alien	White	Two or more races	Unknown	Total
51 Health professions and related programs	1	75	60	21		3	357	23	20	<b>560</b>
22 Legal professions and studies	1	2	12	6		4	92	1	4	<b>122</b>
26 Biological and biomedical sciences		3	7	4		13	44	2	1	<b>74</b>
14 Engineering	1	1	3			39	21	2		<b>67</b>
13 Education			17	3		6	35	1		<b>62</b>
40 Physical sciences		1		1		13	19			<b>34</b>
42 Psychology				1		3	28			<b>32</b>
45 Social sciences		2	2			4	6	3		<b>17</b>
31 Parks, recreation, leisure, fitness, and kinesiology		1	3				7	2		<b>13</b>
09 Communication, journalism, and related programs						5	6	1		<b>12</b>
30 Multi/interdisciplinary studies		1	5	2			2			<b>10</b>
52 Business, management, marketing, and related support services			1			5	3	1		<b>10</b>
27 Mathematics and statistics						8				<b>8</b>
11 Computer and information sciences and support services		1				4	2			<b>7</b>
50 Visual and performing arts			1			2	4			<b>7</b>
23 English language and literature/letters							4		2	<b>6</b>
44 Public administration and social service professions			1			2	2			<b>5</b>
16 Foreign languages, literatures, and linguistics			1	1						<b>2</b>
54 History							2			<b>2</b>

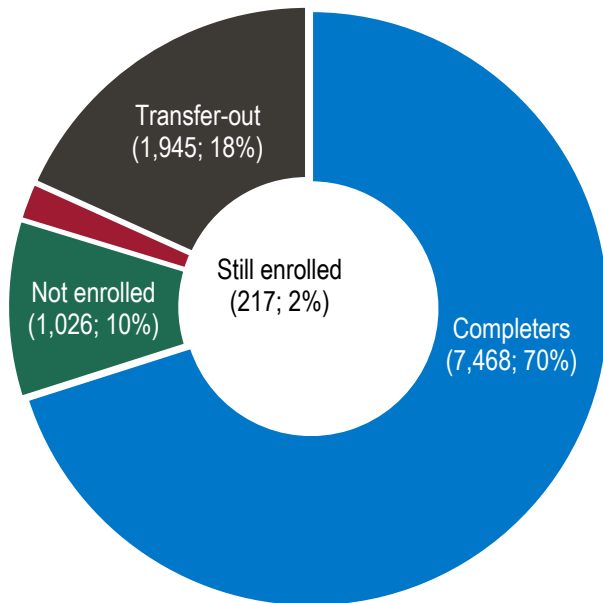
Source: Integrated Postsecondary Education Data System (IPEDS)



## Six-year Graduation Rates and Completion Status

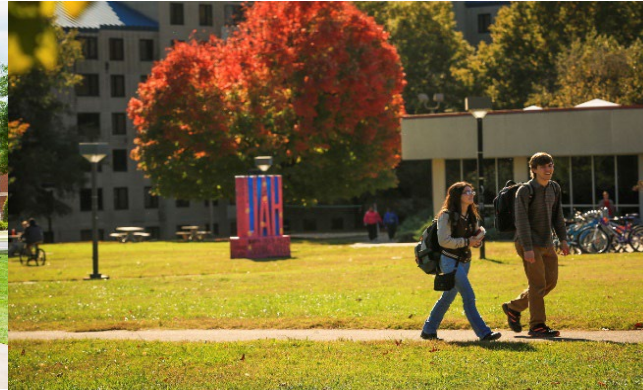
Six-year graduation rate

70%

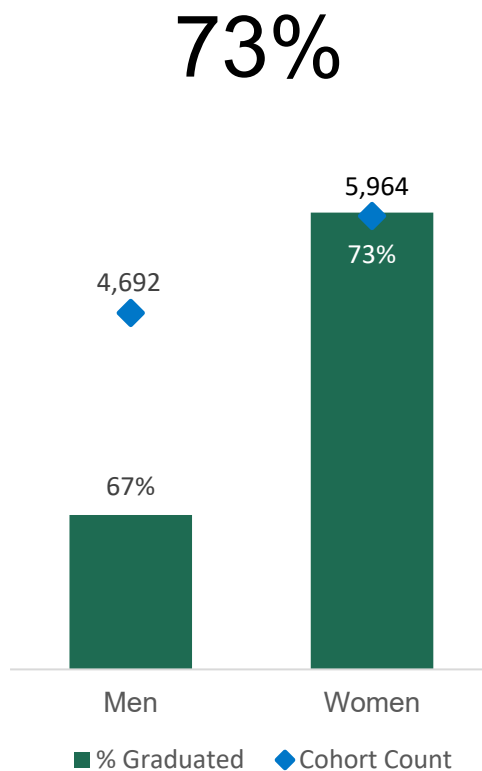


Reporting Year	2013	2014	2015	2016	2017	2018	2019	2020	2021	2022
Adjusted Cohort	2007	2008	2009	2010	2011	2012	2013	2014	2015	2016
<b>UA</b>	<b>4,438</b>	<b>5,009</b>	<b>5,062</b>	<b>5,443</b>	<b>5,665</b>	<b>6,302</b>	<b>6,385</b>	<b>6,791</b>	<b>7,169</b>	<b>7,532</b>
Completers	2,958	3,289	3,396	3,740	3,845	4,530	4,540	4,899	5,178	5,480
No longer enrolled	382	421	423	444	464	488	480	467	554	533
Still enrolled	117	121	122	114	131	101	98	89	88	104
Transfer-out	981	1,178	1,121	1,145	1,225	1,183	1,267	1,336	1,349	1,415
Graduation rate	67%	66%	67%	69%	68%	72%	71%	72%	72%	73%
<b>UAB</b>	<b>1,378</b>	<b>1,246</b>	<b>1,494</b>	<b>1,537</b>	<b>1,576</b>	<b>1,652</b>	<b>1,727</b>	<b>1,714</b>	<b>1,590</b>	<b>1,931</b>
Completers	741	692	816	816	834	963	1,095	1,048	991	1,237
No longer enrolled	251	198	251	268	28	254	245	261	264	341
Still enrolled	61	56	65	79	278	66	52	58	51	72
Transfer-out	325	300	362	374	436	369	335	347	284	281
Graduation rate	54%	56%	55%	53%	53%	58%	63%	61%	62%	64%
<b>UAH</b>	<b>759</b>	<b>765</b>	<b>774</b>	<b>600</b>	<b>652</b>	<b>615</b>	<b>638</b>	<b>714</b>	<b>1,026</b>	<b>1,193</b>
Completers	367	353	382	292	317	319	368	408	623	751
No longer enrolled	102	95	97	100	112	74	83	109	122	152
Still enrolled	52	51	49	29	37	40	25	42	34	41
Transfer-out	238	266	246	179	186	182	162	155	247	249
Graduation rate	48%	46%	49%	49%	49%	52%	58%	57%	61%	63%
<b>UAS</b>	<b>6,575</b>	<b>7,020</b>	<b>7,330</b>	<b>7,580</b>	<b>7,893</b>	<b>8,569</b>	<b>8,750</b>	<b>9,219</b>	<b>9,785</b>	<b>10,656</b>
Completers	4,066	4,334	4,594	4,848	4,996	5,812	6,003	6,355	6,792	7,468
No longer enrolled	735	714	771	812	604	816	808	837	940	1,026
Still enrolled	230	228	236	222	446	207	175	189	173	217
Transfer-out	1,544	1,744	1,729	1,698	1,847	1,734	1,764	1,838	1,880	1,945
Graduation rate	62%	62%	63%	64%	63%	68%	69%	69%	69%	70%

Data Source (years prior to 2022): Integrated Postsecondary Education Data System (IPEDS). Data Source (2022): campus preliminary reports.



Women, Six-year Graduation Rate



Six-year Graduation Rates by Gender

Reporting Year	2013	2014	2015	2016	2017	2018	2019	2020	2021	2022
Adjusted Cohort	2007	2008	2009	2010	2011	2012	2013	2014	2015	2016
<b>UA</b>	<b>4,438</b>	<b>5,009</b>	<b>5,062</b>	<b>5,443</b>	<b>5,665</b>	<b>6,302</b>	<b>6,385</b>	<b>6,791</b>	<b>7,169</b>	<b>7,532</b>
Men	1,977	2,233	2,316	2,437	2,526	2,783	2,795	2,919	3,000	3,238
% Graduated	63%	62%	63%	64%	65%	69%	68%	70%	70%	70%
Women	2,461	2,776	2,746	3,006	3,139	3,519	3,590	3,872	4,169	4,294
% Graduated	69%	69%	71%	73%	71%	74%	73%	74%	74%	74%
<b>UAB</b>	<b>1,378</b>	<b>1,246</b>	<b>1,494</b>	<b>1,537</b>	<b>1,576</b>	<b>1,652</b>	<b>1,727</b>	<b>1,714</b>	<b>1,590</b>	<b>1,931</b>
Men	571	536	675	686	686	707	694	731	625	728
% Graduated	48%	49%	50%	48%	45%	52%	59%	56%	58%	59%
Women	807	710	819	851	890	945	1,033	983	965	1,203
% Graduated	58%	61%	58%	58%	59%	63%	66%	65%	65%	67%
<b>UAH</b>	<b>759</b>	<b>765</b>	<b>774</b>	<b>600</b>	<b>652</b>	<b>615</b>	<b>638</b>	<b>714</b>	<b>1,026</b>	<b>1,193</b>
Men	402	417	416	350	384	337	387	437	615	726
% Graduated	43%	43%	48%	45%	45%	48%	55%	55%	56%	59%
Women	357	348	358	250	268	278	251	277	411	467
% Graduated	54%	50%	51%	54%	53%	56%	61%	60%	68%	69%
<b>UAS</b>	<b>6,575</b>	<b>7,020</b>	<b>7,330</b>	<b>7,580</b>	<b>7,893</b>	<b>8,569</b>	<b>8,750</b>	<b>9,219</b>	<b>9,785</b>	<b>10,656</b>
Men	2,950	3,186	3,407	3,473	3,596	3,827	3,876	4,087	4,240	4,692
% Graduated	57%	57%	59%	59%	59%	64%	65%	66%	66%	67%
Women	3,625	3,834	3,923	4,107	4,297	4,742	4,874	5,132	5,545	5,964
% Graduated	65%	65%	66%	68%	67%	71%	71%	71%	72%	73%

Data Source (years prior to 2022): Integrated Postsecondary Education Data System (IPEDS). Data Source (2022) : campus preliminary reports.



UA, Six-year Graduation Rate

73%

White, 75%

US Nonresident, 73%

Asian, 72%

Race/ethnicity unknown,  
68%

Hispanic, 67%

Two or more races, 67%

Black or African  
American, 60%

American Indian or Alaska  
Native, 58%

Native Hawaiian or Other  
Pacific Isl., 57%

## UA: Six-year Graduation Rates by Race/Ethnicity

Reporting Year	2013	2014	2015	2016	2017	2018	2019	2020	2021	2022
Adjusted Cohort	2007	2008	2009	2010	2011	2012	2013	2014	2015	2016
# Students in cohort	4,438	5,009	5,062	5,443	5,665	6,302	6,385	6,791	7,169	7,532
American Indian or Alaska Native	20	23	34	24	29	14	29	21	29	24
Asian	51	66	72	67	58	70	75	65	91	89
Black or African American	378	507	550	645	677	575	601	570	701	601
Hispanic	76	106	135	197	146	239	237	285	354	401
Native Hawaiian or Other Pacific Isl.	0	0	0	8	4	8	6	4	8	7
US Nonresident	23	27	50	59	133	201	161	93	93	59
Race/ethnicity unknown	0	0	0	20	1	13	0	10	27	25
Two or more races	0	0	0	91	124	162	174	248	191	262
White	3,890	4,280	4,221	4,332	4,493	5,020	5,102	5,495	5,675	6,064
# Completers	2,958	3,289	3,396	3,740	3,845	4,530	4,540	4,899	5,178	5,480
American Indian or Alaska Native	15	13	18	14	20	10	21	11	18	14
Asian	36	39	49	49	37	52	57	47	72	64
Black or African American	214	305	300	360	365	339	340	351	397	362
Hispanic	55	67	80	116	79	151	155	190	234	268
Native Hawaiian or Other Pacific Isl.	0	0	0	6	3	6	4	3	5	4
US Nonresident	15	18	39	44	97	160	112	65	69	43
Race/ethnicity unknown	0	0	0	11	1	10	0	9	18	17
Two or more races	0	0	0	56	75	99	124	159	127	175
White	2,623	2,847	2,910	3,084	3,168	3,703	3,727	4,064	4,238	4,533
Graduation Rates	67%	66%	67%	69%	68%	72%	71%	72%	72%	73%
American Indian or Alaska Native	75%	57%	53%	58%	69%	71%	72%	52%	62%	58%
Asian	71%	59%	68%	73%	64%	74%	76%	72%	79%	72%
Black or African American	57%	60%	55%	56%	54%	59%	57%	62%	57%	60%
Hispanic	72%	63%	59%	59%	54%	63%	65%	67%	66%	67%
Native Hawaiian or Other Pacific Isl.				75%	75%	75%	67%	75%	63%	57%
US Nonresident	65%	67%	78%	75%	73%	80%	70%	70%	74%	73%
Race/ethnicity unknown				55%	100%	77%		90%	67%	68%
Two or more races				62%	60%	61%	71%	64%	66%	67%
White	67%	67%	69%	71%	71%	74%	73%	74%	75%	75%

Data Source (years prior to 2022): Integrated Postsecondary Education Data System (IPEDS). Data Source (2022) : campus preliminary reports.

64%

Asian, 82%

Two or more races, 66%

White, 65%

US Nonresident, 63%

Race/ethnicity...

Black or African  
American, 57%American Indian or  
Alaska Native, 55%

Hispanic, 51%

## UAB: Six-year Graduation Rates by Race/Ethnicity

Reporting Year	2013	2014	2015	2016	2017	2018	2019	2020	2021	2022
Adjusted Cohort	2007	2008	2009	2010	2011	2012	2013	2014	2015	2016
# Students in cohort	1,378	1,246	1,494	1,537	1,576	1,652	1,727	1,714	1,590	1,931
American Indian or Alaska Native	3	8	12	3	4	8	3	3	5	11
Asian	75	70	79	107	108	109	142	131	159	152
Black or African American	349	272	358	402	381	373	384	449	354	491
Hispanic	27	28	37	28	36	50	40	42	51	49
Native Hawaiian or Other Pacific Isl.	0	1	1	2	1	1	0	0	0	1
US Nonresident	23	18	16	12	22	17	18	30	20	43
Race/ethnicity unknown	36	53	41	12	11	8	16	5	2	5
Two or more races	30	6	18	50	72	65	75	89	78	102
White	835	790	932	921	941	1,021	1,049	965	921	1,077
# Completers	741	692	816	816	834	963	1,095	1,048	991	1,237
American Indian or Alaska Native	2	3	6	1	2	4	0	2	3	6
Asian	51	50	61	76	76	86	120	97	132	125
Black or African American	181	142	169	197	181	196	214	266	196	280
Hispanic	17	17	22	12	20	31	27	30	29	25
Native Hawaiian or Other Pacific Isl.	0	1	1	2	1	1	0	0	0	1
US Nonresident	15	13	11	7	13	13	15	18	12	27
Race/ethnicity unknown	15	25	17	7	5	4	12	3	2	3
Two or more races	19	6	13	29	32	39	44	48	39	67
White	441	435	516	485	504	589	663	584	578	703
Graduation Rates	54%	56%	55%	53%	53%	58%	63%	61%	62%	64%
American Indian or Alaska Native	67%	38%	50%	33%	50%	50%	0%	67%	60%	55%
Asian	68%	71%	77%	71%	70%	79%	85%	74%	83%	82%
Black or African American	52%	52%	47%	49%	48%	53%	56%	59%	55%	57%
Hispanic	63%	61%	59%	43%	56%	62%	68%	71%	57%	51%
Native Hawaiian or Other Pacific Isl.		100%	100%	100%	100%	100%				
US Nonresident	65%	72%	69%	58%	59%	76%	83%	60%	60%	63%
Race/ethnicity unknown	42%	47%	41%	58%	45%	50%	75%	60%	100%	60%
Two or more races	63%	100%	72%	58%	44%	60%	59%	54%	50%	66%
White	53%	55%	55%	53%	54%	58%	63%	61%	63%	65%

Data Source (years prior to 2022): Integrated Postsecondary Education Data System (IPEDS). Data Source (2022): campus preliminary reports.



# 63%

Race/ethnicity unknown,  
74%

Asian, 69%

US Nonresident, 68%

White, 64%

Two or more  
races, 59%

Hispanic, 55%

Black or African  
American, 48%

Am. Indian or  
Alaska Native,  
33%

## UAH: Six-year Graduation Rates by Race/Ethnicity

Reporting Year	2013	2014	2015	2016	2017	2018	2019	2020	2021	2022
Adjusted Cohort	2007	2008	2009	2010	2011	2012	2013	2014	2015	2016
# Students in cohort	759	765	774	600	652	615	638	714	1,026	1,193
American Indian or Alaska Native	15	7	11	6	12	7	10	8	9	12
Asian	20	20	30	27	27	21	23	25	32	49
Black or African American	106	109	104	92	86	91	70	69	97	81
Hispanic	17	18	25	23	26	28	15	32	45	49
Native Hawaiian or Other Pacific Isl.	0	0	1	0	0	0	0	0	0	0
US Nonresident	20	19	17	13	14	10	25	12	21	28
Race/ethnicity unknown	3	4	8	11	29	17	11	13	18	23
Two or more races	11	12	16	13	3	9	13	12	25	22
White	567	576	562	415	455	432	471	543	779	929
# Completers	367	353	382	292	317	319	368	408	623	751
American Indian or Alaska Native	10	3	4	2	5	3	5	6	6	4
Asian	13	13	16	19	16	13	15	11	26	34
Black or African American	50	33	37	32	25	36	30	33	47	39
Hispanic	6	9	7	8	10	16	5	17	29	27
Native Hawaiian or Other Pacific Isl.	0	0	1	0	0	0	0	0	0	0
US Nonresident	15	10	11	3	8	5	15	10	17	19
Race/ethnicity unknown	2	2	6	5	16	10	9	9	8	17
Two or more races	7	7	7	5	2	2	4	5	15	13
White	264	276	293	218	235	234	285	317	475	598
Graduation Rates	48%	46%	49%	49%	49%	52%	58%	57%	61%	63%
American Indian or Alaska Native	67%	43%	36%	33%	42%	43%	50%	75%	67%	33%
Asian	65%	65%	53%	70%	59%	62%	65%	44%	81%	69%
Black or African American	47%	30%	36%	35%	29%	40%	43%	48%	48%	48%
Hispanic	35%	50%	28%	35%	38%	57%	33%	53%	64%	55%
Native Hawaiian or Other Pacific Isl.			100%							
US Nonresident	75%	53%	65%	23%	57%	50%	60%	83%	81%	68%
Race/ethnicity unknown	67%	50%	75%	45%	55%	59%	82%	69%	44%	74%
Two or more races	64%	58%	44%	38%	67%	22%	31%	42%	60%	59%
White	47%	48%	52%	53%	52%	54%	61%	58%	61%	64%

Data Source (years prior to 2022): Integrated Postsecondary Education Data System (IPEDS). Data Source (2022): campus preliminary reports.

70%

Asian, 77%

White, 72%

Race/ethnicity  
unknown, 70%

US Nonresident, 68%

Two or more races, 66%

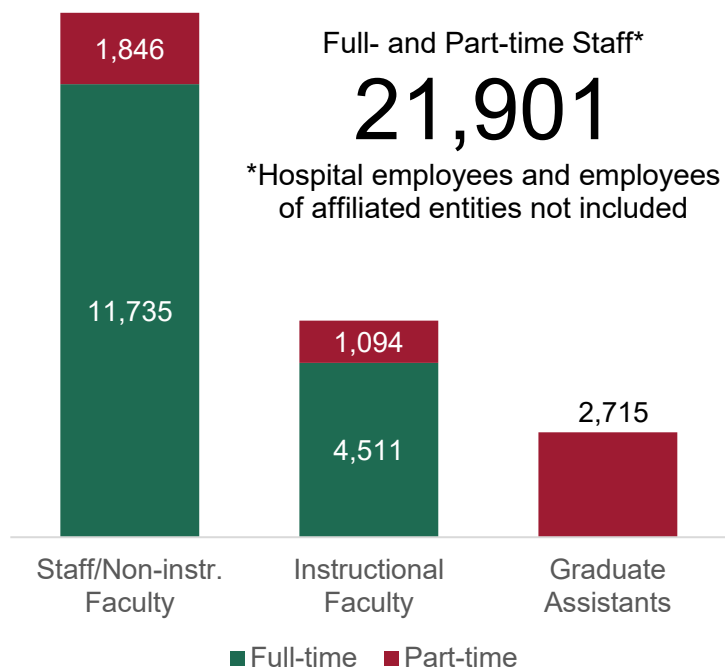
Hispanic, 64%

Native Hawaiian or  
Other Pacific Isl., 63%Black or African  
American, 58%Am. Indian or Alaska  
Native, 51%

## UAS: Six-year Graduation Rates by Race/Ethnicity

Reporting Year	2013	2014	2015	2016	2017	2018	2019	2020	2021	2022
Adjusted Cohort	2007	2008	2009	2010	2011	2012	2013	2014	2015	2016
# Students in cohort	6,575	7,020	7,330	7,580	7,893	8,569	8,750	9,219	9,785	10,656
American Indian or Alaska Native	38	38	57	33	45	29	42	32	43	47
Asian	146	156	181	201	193	200	240	221	282	290
Black or African American	833	888	1,012	1,139	1,144	1,039	1,055	1,088	1,152	1,173
Hispanic	120	152	197	248	208	317	292	359	450	499
Native Hawaiian or Other Pacific Isl.	0	1	2	10	5	9	6	4	8	8
US Nonresident	66	64	83	84	169	228	204	135	134	130
Race/ethnicity unknown	39	57	49	43	41	38	27	28	47	53
Two or more races	41	18	34	154	199	236	262	349	294	386
White	5,292	5,646	5,715	5,668	5,889	6,473	6,622	7,003	7,375	8,070
# Completers	4,066	4,334	4,594	4,848	4,996	5,812	6,003	6,355	6,792	7,468
American Indian or Alaska Native	27	19	28	17	27	17	26	19	27	24
Asian	100	102	126	144	129	151	192	155	230	223
Black or African American	445	480	506	589	571	571	584	650	640	681
Hispanic	78	93	109	136	109	198	187	237	292	320
Native Hawaiian or Other Pacific Isl.	0	1	2	8	4	7	4	3	5	5
US Nonresident	45	41	61	54	118	178	142	93	98	89
Race/ethnicity unknown	17	27	23	23	22	24	21	21	28	37
Two or more races	26	13	20	90	109	140	172	212	181	255
White	3,328	3,558	3,719	3,787	3,907	4,526	4,675	4,965	5,291	5,834
Graduation Rates	62%	62%	63%	64%	63%	68%	69%	69%	69%	70%
American Indian or Alaska Native	71%	50%	49%	52%	60%	59%	62%	59%	63%	51%
Asian	68%	65%	70%	72%	67%	76%	80%	70%	82%	77%
Black or African American	53%	54%	50%	52%	50%	55%	55%	60%	56%	58%
Hispanic	65%	61%	55%	55%	52%	62%	64%	66%	65%	64%
Native Hawaiian or Other Pacific Isl.		100%	100%	80%	80%	78%	67%	75%	63%	63%
US Nonresident	68%	64%	73%	64%	70%	78%	70%	69%	73%	68%
Race/ethnicity unknown	44%	47%	47%	53%	54%	63%	78%	75%	60%	70%
Two or more races	63%	72%	59%	58%	55%	59%	66%	61%	62%	66%
White	63%	63%	65%	67%	66%	70%	71%	71%	72%	72%

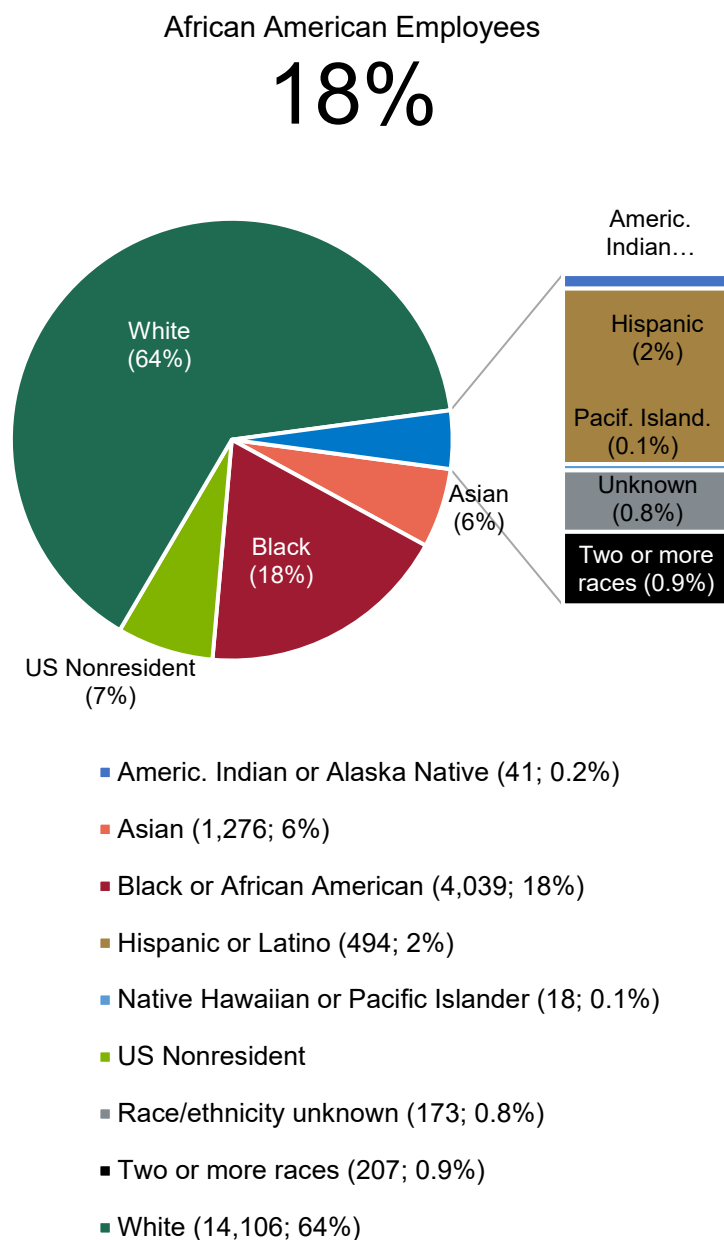
Data Source (years prior to 2022): Integrated Postsecondary Education Data System (IPEDS). Data Source (2022): campus preliminary reports.



## Employees by Occupation and Status

	2014	2015	2016	2017	2018	2019	2020	2021
<b>UA</b>	<b>8,080</b>	<b>8,280</b>	<b>8,194</b>	<b>8,447</b>	<b>8,633</b>	<b>8,755</b>	<b>8,616</b>	<b>8,923</b>
<b>Instructional Faculty</b>	<b>1,847</b>	<b>1,867</b>	<b>1,884</b>	<b>1,957</b>	<b>2,009</b>	<b>2,027</b>	<b>1,986</b>	<b>2,022</b>
Full-time	1,287	1,328	1,378	1,435	1,484	1,528	1,517	1,557
Part-time	560	539	506	522	525	499	469	465
<b>Staff/Non-instr. Faculty</b>	<b>4,579</b>	<b>4,774</b>	<b>4,781</b>	<b>4,935</b>	<b>5,031</b>	<b>5,083</b>	<b>4,934</b>	<b>5,043</b>
Full-time	3,997	4,184	4,229	4,368	4,469	4,520	4,463	4,509
Part-time	582	590	552	567	562	563	471	534
<b>Graduate Assistants</b>	<b>1,654</b>	<b>1,639</b>	<b>1,529</b>	<b>1,555</b>	<b>1,593</b>	<b>1,645</b>	<b>1,696</b>	<b>1,858</b>
Part-time	1,654	1,639	1,529	1,555	1,593	1,645	1,696	1,858
<b>UAB</b>	<b>9,772</b>	<b>9,947</b>	<b>9,988</b>	<b>10,251</b>	<b>10,684</b>	<b>11,029</b>	<b>10,576</b>	<b>10,869</b>
<b>Instructional Faculty</b>	<b>2,392</b>	<b>2,458</b>	<b>2,503</b>	<b>2,563</b>	<b>2,829</b>	<b>2,917</b>	<b>2,958</b>	<b>3,038</b>
Full-time	2,210	2,268	2,274	2,336	2,444	2,523	2,544	2,603
Part-time	182	190	229	227	385	394	414	435
<b>Staff/Non-instr. Faculty</b>	<b>6,819</b>	<b>6,927</b>	<b>6,980</b>	<b>7,175</b>	<b>7,402</b>	<b>7,662</b>	<b>7,135</b>	<b>7,334</b>
Full-time	5,457	5,541	5,674	5,823	5,983	6,151	5,952	6,035
Part-time	1,362	1,386	1,306	1,352	1,419	1,511	1,183	1,299
<b>Graduate Assistants</b>	<b>561</b>	<b>562</b>	<b>505</b>	<b>513</b>	<b>453</b>	<b>450</b>	<b>483</b>	<b>497</b>
Part-time	561	562	505	513	453	450	483	497
<b>UAH</b>	<b>1,841</b>	<b>1,826</b>	<b>1,830</b>	<b>1,941</b>	<b>1,915</b>	<b>1,918</b>	<b>1,945</b>	<b>2,022</b>
<b>Instructional Faculty</b>	<b>479</b>	<b>520</b>	<b>513</b>	<b>549</b>	<b>544</b>	<b>578</b>	<b>538</b>	<b>545</b>
Full-time	298	321	327	346	347	363	353	351
Part-time	181	199	186	203	197	215	185	194
<b>Staff/Non-instr. Faculty</b>	<b>1,052</b>	<b>1,001</b>	<b>989</b>	<b>1,008</b>	<b>1,013</b>	<b>1,031</b>	<b>1,054</b>	<b>1,117</b>
Full-time	1,034	983	976	998	1,000	1,021	1,045	1,105
Part-time	18	18	13	10	13	10	9	12
<b>Graduate Assistants</b>	<b>310</b>	<b>305</b>	<b>328</b>	<b>384</b>	<b>358</b>	<b>309</b>	<b>353</b>	<b>360</b>
Part-time	310	305	328	384	358	309	353	360
<b>UAS</b>	<b>83</b>	<b>93</b>	<b>91</b>	<b>91</b>	<b>90</b>	<b>95</b>	<b>93</b>	<b>87</b>
<b>Staff</b>	<b>83</b>	<b>93</b>	<b>91</b>	<b>91</b>	<b>90</b>	<b>95</b>	<b>93</b>	<b>87</b>
Full-time	81	90	89	89	85	92	92	86
Part-time	2	3	2	2	5	3	1	1
<b>Total</b>	<b>19,776</b>	<b>20,146</b>	<b>20,103</b>	<b>20,730</b>	<b>21,322</b>	<b>21,797</b>	<b>21,230</b>	<b>21,901</b>

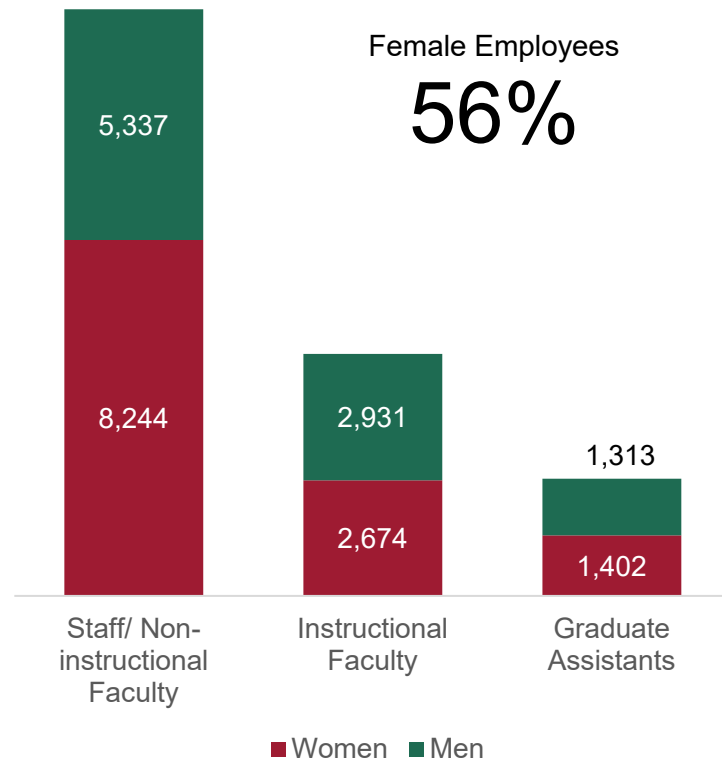
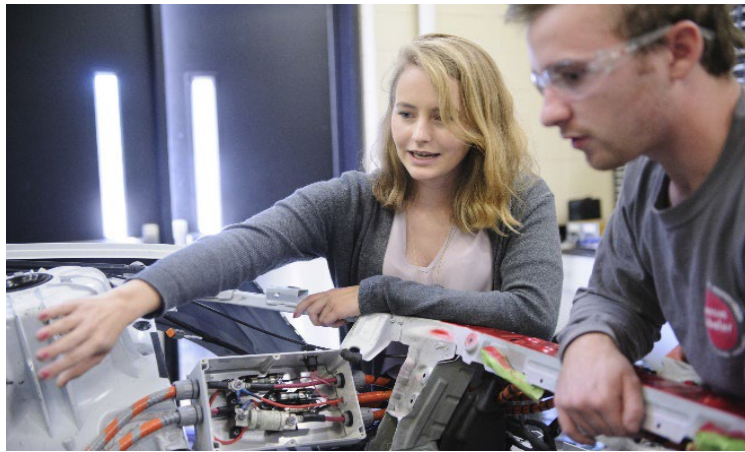
Source: Integrated Postsecondary Education Data System (IPEDS)



## Employees by Race/Ethnicity

	2014	2015	2016	2017	2018	2019	2020	2021
<b>UA</b>	<b>8,080</b>	<b>8,280</b>	<b>8,194</b>	<b>8,447</b>	<b>8,633</b>	<b>8,755</b>	<b>8,616</b>	<b>8,923</b>
American Indian or Alaska Nat.	11	12	13	19	20	14	14	12
Asian	191	190	170	189	212	241	237	273
Black or African American	1,180	1,229	1,221	1,284	1,326	1,330	1,285	1,335
Hispanic or Latino	129	152	159	164	174	190	204	223
Native Hawaiian or Pacific Isl.	2	3	4	4	4	4	4	6
US Nonresident	450	497	498	542	560	578	600	692
Race/ethnicity unknown	34	60	121	40	46	51	46	38
Two or more races	45	52	51	70	73	90	97	88
White	6,038	6,085	5,957	6,135	6,218	6,257	6,129	6,256
<b>UAB</b>	<b>9,772</b>	<b>9,947</b>	<b>9,988</b>	<b>10,251</b>	<b>10,684</b>	<b>11,029</b>	<b>10,576</b>	<b>10,869</b>
American Indian or Alaska Nat.	19	22	23	20	20	19	20	17
Asian	698	727	778	798	813	829	852	880
Black or African American	2,372	2,386	2,342	2,425	2,559	2,633	2,370	2,490
Hispanic or Latino	149	160	167	174	183	205	198	230
Native Hawaiian or Pacific Isl.	13	9	7	11	11	13	10	11
US Nonresident	522	549	537	611	667	702	720	680
Race/ethnicity unknown	4	6	14	27	59	93	108	123
Two or more races	60	67	70	71	88	102	97	111
White	5,935	6,021	6,050	6,114	6,284	6,433	6,201	6,327
<b>UAH</b>	<b>1,841</b>	<b>1,826</b>	<b>1,830</b>	<b>1,941</b>	<b>1,915</b>	<b>1,918</b>	<b>1,945</b>	<b>2,022</b>
American Indian or Alaska Nat.	9	10	17	12	10	9	10	12
Asian	90	96	87	101	106	110	116	120
Black or African American	184	182	177	203	200	205	203	201
Hispanic or Latino	20	23	19	27	22	30	34	41
Native Hawaiian or Pacific Isl.	4	4	2	2	3	0	0	1
US Nonresident	161	169	178	195	184	172	179	175
Race/ethnicity unknown	19	21	15	14	11	38	41	12
Two or more races	1	2	6	5	4	3	6	8
White	1,353	1,319	1,329	1,382	1,375	1,351	1,356	1,452
<b>UAS</b>	<b>83</b>	<b>93</b>	<b>91</b>	<b>91</b>	<b>90</b>	<b>95</b>	<b>93</b>	<b>87</b>
Asian	1	2	2	2	2	1	3	3
Black or African American	13	12	14	14	15	14	14	13
White	69	79	75	75	73	80	76	71
<b>Total</b>	<b>19,776</b>	<b>20,146</b>	<b>20,103</b>	<b>20,730</b>	<b>21,322</b>	<b>21,797</b>	<b>21,230</b>	<b>21,901</b>

Source: Integrated Postsecondary Education Data System (IPEDS)



## Employees by Gender

	2014	2015	2016	2017	2018	2019	2020	2021
<b>UA</b>	<b>8,080</b>	<b>8,280</b>	<b>8,194</b>	<b>8,447</b>	<b>8,633</b>	<b>8,755</b>	<b>8,616</b>	<b>8,923</b>
<b>Instructional Faculty</b>	<b>1,847</b>	<b>1,867</b>	<b>1,884</b>	<b>1,957</b>	<b>2,009</b>	<b>2,027</b>	<b>1,986</b>	<b>2,022</b>
Female	854	852	897	947	961	974	954	1,001
Male	993	1,015	987	1,010	1,048	1,053	1,032	1,021
<b>Staff/Non-instr. Faculty</b>	<b>4,579</b>	<b>4,774</b>	<b>4,781</b>	<b>4,935</b>	<b>5,031</b>	<b>5,083</b>	<b>4,934</b>	<b>5,043</b>
Female	2,676	2,770	2,774	2,854	2,893	2,957	2,872	2,961
Male	1,903	2,004	2,007	2,081	2,138	2,126	2,062	2,082
<b>Graduate Assistants</b>	<b>1,654</b>	<b>1,639</b>	<b>1,529</b>	<b>1,555</b>	<b>1,593</b>	<b>1,645</b>	<b>1,696</b>	<b>1,858</b>
Female	829	819	766	765	810	876	917	974
Male	825	820	763	790	783	769	779	884
<b>UAB</b>	<b>9,772</b>	<b>9,947</b>	<b>9,988</b>	<b>10,251</b>	<b>10,684</b>	<b>11,029</b>	<b>10,576</b>	<b>10,869</b>
<b>Instructional Faculty</b>	<b>2,392</b>	<b>2,458</b>	<b>2,503</b>	<b>2,563</b>	<b>2,829</b>	<b>2,917</b>	<b>2,958</b>	<b>3,038</b>
Female	971	996	1,033	1,059	1,228	1,297	1,338	1,409
Male	1,421	1,462	1,470	1,504	1,601	1,620	1,620	1,629
<b>Staff/Non-instr. Faculty</b>	<b>6,819</b>	<b>6,927</b>	<b>6,980</b>	<b>7,175</b>	<b>7,402</b>	<b>7,662</b>	<b>7,135</b>	<b>7,334</b>
Female	4,401	4,460	4,463	4,596	4,745	4,917	4,561	4,668
Male	2,418	2,467	2,517	2,579	2,657	2,745	2,574	2,666
<b>Graduate Assistants</b>	<b>561</b>	<b>562</b>	<b>505</b>	<b>513</b>	<b>453</b>	<b>450</b>	<b>483</b>	<b>497</b>
Female	244	254	239	243	202	224	238	272
Male	317	308	266	270	251	226	245	225
<b>UAH</b>	<b>1,841</b>	<b>1,826</b>	<b>1,830</b>	<b>1,941</b>	<b>1,915</b>	<b>1,918</b>	<b>1,945</b>	<b>2,022</b>
<b>Instructional Faculty</b>	<b>479</b>	<b>520</b>	<b>513</b>	<b>549</b>	<b>544</b>	<b>578</b>	<b>538</b>	<b>545</b>
Female	202	238	243	267	268	287	256	264
Male	277	282	270	282	276	291	282	281
<b>Staff/Non-instr. Faculty</b>	<b>1,052</b>	<b>1,001</b>	<b>989</b>	<b>1,008</b>	<b>1,013</b>	<b>1,031</b>	<b>1,054</b>	<b>1,117</b>
Female	508	496	492	503	521	522	530	558
Male	544	505	497	505	492	509	524	559
<b>Graduate Assistants</b>	<b>310</b>	<b>305</b>	<b>328</b>	<b>384</b>	<b>358</b>	<b>309</b>	<b>353</b>	<b>360</b>
Female	112	111	119	159	153	129	150	156
Male	198	194	209	225	205	180	203	204
<b>UAS</b>	<b>83</b>	<b>93</b>	<b>91</b>	<b>91</b>	<b>90</b>	<b>95</b>	<b>93</b>	<b>87</b>
<b>Staff</b>	<b>83</b>	<b>93</b>	<b>91</b>	<b>91</b>	<b>90</b>	<b>95</b>	<b>93</b>	<b>87</b>
Female	54	60	62	60	58	61	59	57
Male	29	33	29	31	32	34	34	30
<b>Total</b>	<b>19,776</b>	<b>20,146</b>	<b>20,103</b>	<b>20,730</b>	<b>21,322</b>	<b>21,797</b>	<b>21,230</b>	<b>21,901</b>

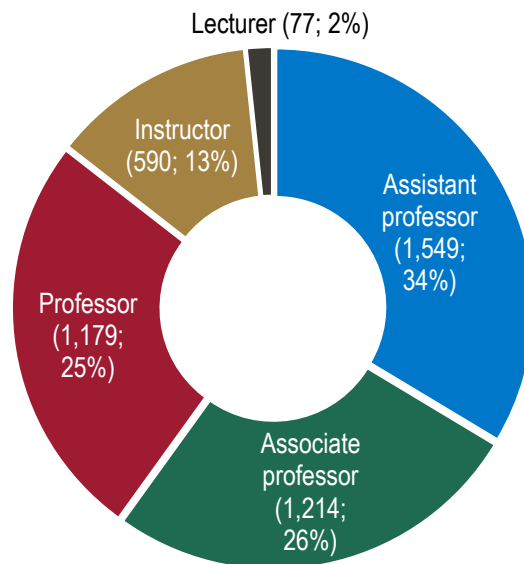
Source: Integrated Postsecondary Education Data System (IPEDS)





Fall 2022 Full-time Faculty

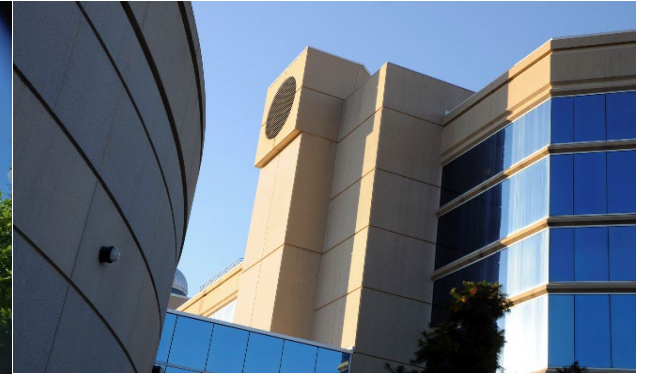
4,609



Full-time Faculty by Rank

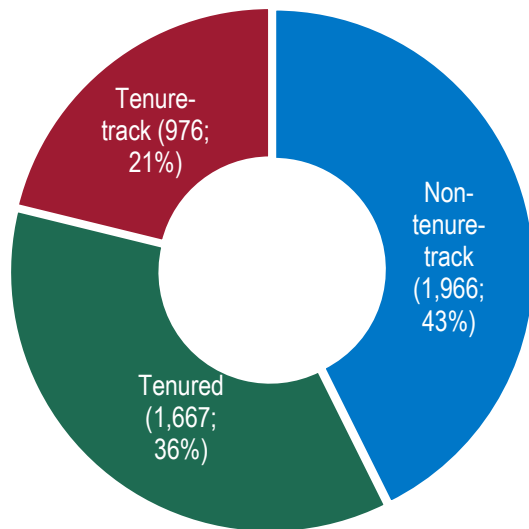
	2015	2016	2017	2018	2019	2020	2021	2022
<b>UA</b>	<b>1,328</b>	<b>1,378</b>	<b>1,435</b>	<b>1,484</b>	<b>1,528</b>	<b>1,517</b>	<b>1,557</b>	<b>1,583</b>
Assistant professor	398	426	461	494	502	474	479	478
Associate professor	333	337	337	352	363	392	403	409
Professor	304	303	311	311	319	321	334	330
Instructor	279	293	308	310	328	324	339	366
Lecturer	14	19	18	17	16	6	2	
<b>UAB</b>	<b>2,268</b>	<b>2,274</b>	<b>2,336</b>	<b>2,444</b>	<b>2,523</b>	<b>2,544</b>	<b>2,603</b>	<b>2,668</b>
Assistant professor	783	798	813	894	893	890	933	969
Associate professor	592	596	608	614	677	695	720	719
Professor	676	673	704	718	735	744	746	772
Instructor	217	207	211	218	218	215	204	208
<b>UAH</b>	<b>321</b>	<b>327</b>	<b>346</b>	<b>347</b>	<b>363</b>	<b>353</b>	<b>351</b>	<b>358</b>
Assistant professor	91	90	95	90	97	94	91	102
Associate professor	100	100	105	107	101	97	96	86
Professor	69	66	62	64	75	75	73	77
Instructor	11	11	13	14	16	14	16	16
Lecturer	50	60	71	72	74	73	75	77
<b>UAS Total</b>	<b>3,917</b>	<b>3,979</b>	<b>4,117</b>	<b>4,275</b>	<b>4,414</b>	<b>4,414</b>	<b>4,511</b>	<b>4,609</b>
Assistant professor	1,272	1,314	1,369	1,478	1,492	1,458	1,503	1,549
Associate professor	1,025	1,033	1,050	1,073	1,141	1,184	1,219	1,214
Professor	1,049	1,042	1,077	1,093	1,129	1,140	1,153	1,179
Instructor	507	511	532	542	562	553	559	590
Lecturer	64	79	89	89	90	79	77	77

Data Source (years prior to 2022): Integrated Postsecondary Education Data System (IPEDS). Data Source (2022) : campus preliminary reports.



Tenured/Tenure-track Faculty

57%



## Full-time Faculty by Tenure Status

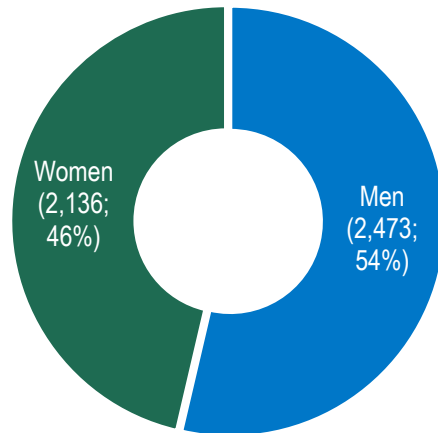
	2015	2016	2017	2018	2019	2020	2021	2022
<b>UA</b>	<b>1,328</b>	<b>1,378</b>	<b>1,435</b>	<b>1,484</b>	<b>1,528</b>	<b>1,517</b>	<b>1,557</b>	<b>1,583</b>
Non-tenure-track	433	466	486	492	523	519	557	602
Tenured	588	577	584	591	597	614	631	621
Tenure-track	307	335	365	401	408	384	369	360
% Tenured/Tenure-track	67%	66%	66%	67%	66%	66%	64%	62%
<b>UAB</b>	<b>2,268</b>	<b>2,274</b>	<b>2,336</b>	<b>2,444</b>	<b>2,523</b>	<b>2,544</b>	<b>2,603</b>	<b>2,668</b>
Non-tenure-track	969	940	988	1,056	1,108	1,137	1,178	1,223
Tenured	805	808	819	855	900	896	883	892
Tenure-track	494	526	529	533	515	511	542	553
% Tenured/Tenure-track	57%	59%	58%	57%	56%	55%	55%	54%
<b>UAH</b>	<b>321</b>	<b>327</b>	<b>346</b>	<b>347</b>	<b>363</b>	<b>353</b>	<b>351</b>	<b>358</b>
Non-tenure-track	92	104	121	120	127	126	131	141
Tenured	155	153	154	158	164	159	158	154
Tenure-track	74	70	71	69	72	68	62	63
% Tenured/Tenure-track	71%	68%	65%	65%	65%	64%	63%	61%
<b>UAS Total</b>	<b>3,917</b>	<b>3,979</b>	<b>4,117</b>	<b>4,275</b>	<b>4,414</b>	<b>4,414</b>	<b>4,511</b>	<b>4,609</b>
Non-tenure-track	1,494	1,510	1,595	1,668	1,758	1,782	1,866	1,966
Tenured	1,548	1,538	1,557	1,604	1,661	1,669	1,672	1,667
Tenure-track	875	931	965	1,003	995	963	973	976
% Tenured/Tenure-track	62%	62%	61%	61%	60%	60%	59%	57%

Data Source (years prior to 2022): Integrated Postsecondary Education Data System (IPEDS). Data Source (2022): campus preliminary reports.



Female Faculty

46%



Full-time Faculty by Gender

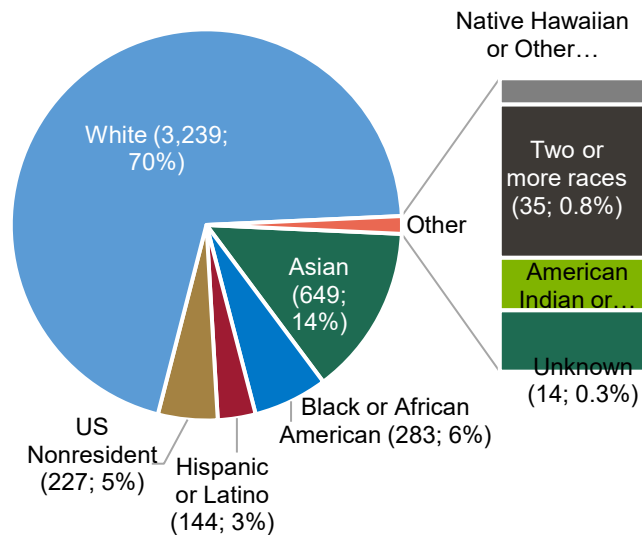
	2015	2016	2017	2018	2019	2020	2021	2022
<b>UA</b>	<b>1,328</b>	<b>1,378</b>	<b>1,435</b>	<b>1,484</b>	<b>1,528</b>	<b>1,517</b>	<b>1,557</b>	<b>1,583</b>
Men	749	765	788	813	834	818	835	835
Women	579	613	647	671	694	699	722	748
% Women	44%	44%	45%	45%	45%	46%	46%	47%
<b>UAB</b>	<b>2,268</b>	<b>2,274</b>	<b>2,336</b>	<b>2,444</b>	<b>2,523</b>	<b>2,544</b>	<b>2,603</b>	<b>2,668</b>
Men	1,369	1,360	1,389	1,432	1,441	1,438	1,449	1,444
Women	899	914	947	1,012	1,082	1,106	1,154	1,224
% Women	40%	40%	41%	41%	43%	43%	44%	46%
<b>UAH</b>	<b>321</b>	<b>327</b>	<b>346</b>	<b>347</b>	<b>363</b>	<b>353</b>	<b>351</b>	<b>358</b>
Men	187	187	191	191	196	194	188	194
Women	134	140	155	156	167	159	163	164
% Women	42%	43%	45%	45%	46%	45%	46%	46%
<b>UAS Total</b>	<b>3,917</b>	<b>3,979</b>	<b>4,117</b>	<b>4,275</b>	<b>4,414</b>	<b>4,414</b>	<b>4,511</b>	<b>4,609</b>
Men	2,305	2,312	2,368	2,436	2,471	2,450	2,472	2,473
Women	1,612	1,667	1,749	1,839	1,943	1,964	2,039	2,136
% Women	41%	42%	42%	43%	44%	44%	45%	46%

Data Source (years prior to 2022): Integrated Postsecondary Education Data System (IPEDS). Data Source (2022): campus preliminary reports.



# African American Faculty

6%



- Asian (649; 14%)
- Black or African American (283; 6%)
- Hispanic or Latino (144; 3%)
- US Nonresident (227; 5%)
- White (3,239; 70%)
- Native Hawaiian or Other Pacific Islander (6; 0.1%)
- Two or more races (35; 0.8%)
- American Indian or Alaska Native (12; 0.3%)
- Unknown (14; 0.3%)

## Full-Time Faculty by Race/Ethnicity

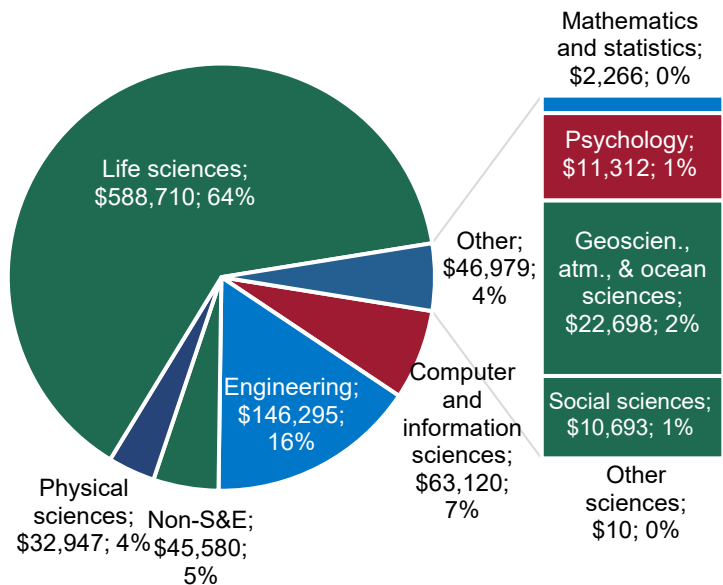
	2015	2016	2017	2018	2019	2020	2021	2022
<b>The University of Alabama</b>	<b>1,328</b>	<b>1,378</b>	<b>1,435</b>	<b>1,484</b>	<b>1,528</b>	<b>1,517</b>	<b>1,557</b>	<b>1,583</b>
American Indian or Alaska Native		1	4	4	4	4	3	2
Asian	88	94	107	118	137	134	146	157
Black or African American	76	80	93	93	94	97	98	92
Hispanic or Latino	35	34	34	37	41	44	45	46
Native Hawaiian or Other Pacific Islander			2	2	3	3	3	4
US Nonresident	53	59	61	65	61	68	77	72
Race/ethnicity unknown	22	63	1	3	6	3	3	10
Two or more races	4	2	2	4	6	8	12	10
White	1,050	1,045	1,131	1,158	1,176	1,156	1,170	1,190
<b>University of Alabama at Birmingham</b>	<b>2,268</b>	<b>2,274</b>	<b>2,336</b>	<b>2,444</b>	<b>2,523</b>	<b>2,544</b>	<b>2,603</b>	<b>2,668</b>
American Indian or Alaska Native	4	4	4	4	4	5	4	8
Asian	334	350	356	372	391	398	410	422
Black or African American	129	131	146	154	155	153	161	171
Hispanic or Latino	70	75	71	75	78	80	83	89
Native Hawaiian or Other Pacific Islander	1		2	1	1	2	3	2
US Nonresident	69	73	91	115	137	152	148	142
Race/ethnicity unknown			1	3	1	2	1	4
Two or more races	12	15	17	17	18	17	21	24
White	1,649	1,626	1,648	1,703	1,738	1,735	1,772	1,806
<b>University of Alabama in Huntsville</b>	<b>321</b>	<b>327</b>	<b>346</b>	<b>347</b>	<b>363</b>	<b>353</b>	<b>351</b>	<b>358</b>
American Indian or Alaska Native					1	2	3	2
Asian	50	54	58	60	62	60	64	70
Black or African American	13	12	16	17	20	18	18	20
Hispanic or Latino	8	8	8	7	8	7	9	9
Native Hawaiian or Other Pacific Islander	1	1	1	1				
US Nonresident	16	11	13	16	18	21	17	13
Two or more races	1	1	1	1	1	1	1	1
White	232	240	249	245	253	244	239	243
<b>UAS Total</b>	<b>3,917</b>	<b>3,979</b>	<b>4,117</b>	<b>4,275</b>	<b>4,414</b>	<b>4,414</b>	<b>4,511</b>	<b>4,609</b>

Data Source (years prior to 2022): Integrated Postsecondary Education Data System (IPEDS). Data Source (2022): campus preliminary reports.



R&D Expenditures  
(Dollars in Thousands)

**\$923,631**



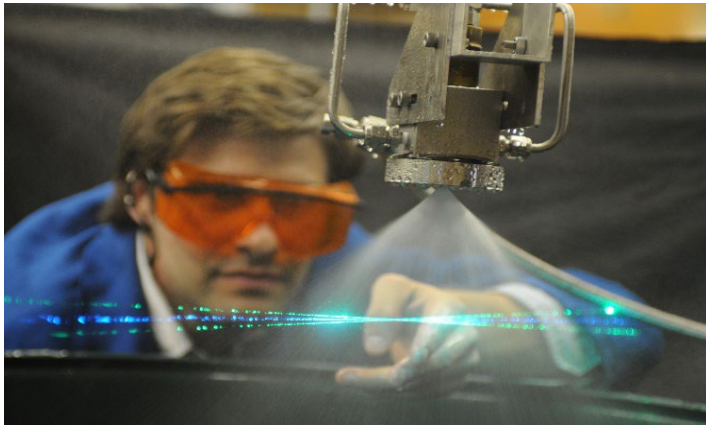
## R&D Expenditures by Field of Study

(Dollars in Thousands)

	2014	2015	2016	2017	2018	2019	2020	2021
<b>UA</b>	<b>\$53,140</b>	<b>\$58,234</b>	<b>\$62,549</b>	<b>\$63,282</b>	<b>\$71,992</b>	<b>\$83,317</b>	<b>\$95,200</b>	<b>\$129,509</b>
Comp. and information sciences	\$11,756	\$14,145	\$13,443	\$12,047	\$11,550	\$12,482	\$12,836	\$12,797
Engineering	\$15,372	\$17,102	\$18,394	\$19,382	\$24,667	\$31,845	\$33,019	\$43,941
Geosc., atmosph., & ocean sc.	\$823	\$903	\$1,597	\$828	\$895	\$1,000	\$3,062	\$4,302
Life sciences	\$4,886	\$5,333	\$5,174	\$5,668	\$7,297	\$8,452	\$8,985	\$14,565
Mathematics and statistics	\$275	\$200	\$127	\$99	\$43	\$179	\$262	\$1,174
Non-S&E	\$5,220	\$6,679	\$9,154	\$11,131	\$12,081	\$15,285	\$22,940	\$29,799
Other sciences	\$31							
Physical sciences	\$6,730	\$6,118	\$6,841	\$6,275	\$7,501	\$5,815	\$6,471	\$7,991
Psychology	\$3,601	\$3,887	\$3,997	\$3,394	\$2,889	\$2,931	\$3,030	\$5,384
Social sciences	\$4,446	\$3,867	\$3,822	\$4,458	\$5,069	\$5,328	\$4,595	\$9,556
<b>UAB</b>	<b>\$428,563</b>	<b>\$516,229</b>	<b>\$537,825</b>	<b>\$561,851</b>	<b>\$588,207</b>	<b>\$607,863</b>	<b>\$618,226</b>	<b>\$644,330</b>
Comp. and information sciences	\$1,010	\$940	\$2,466	\$575	\$919	\$827	\$1,502	\$1,356
Engineering	\$17,847	\$37,222	\$43,359	\$47,730	\$48,102	\$47,555	\$53,030	\$46,844
Geosc., atmosph., & ocean sc.	\$342	\$8,362	\$2,022	\$1,496	\$1,199	\$870	\$701	\$436
Life sciences	\$396,805	\$455,478	\$472,114	\$491,477	\$511,345	\$533,536	\$542,308	\$571,525
Mathematics and statistics	\$264	\$137	\$1,157	\$324	\$320	\$876	\$916	\$383
Non-S&E	\$7,088	\$6,643	\$6,333	\$8,200	\$13,147	\$12,502	\$9,681	\$7,879
Other sciences								\$10
Physical sciences	\$2,819	\$3,003	\$4,898	\$5,667	\$7,211	\$5,961	\$4,678	\$9,885
Psychology	\$2,085	\$4,161	\$5,235	\$5,558	\$5,355	\$4,933	\$5,164	\$5,695
Social sciences	\$303	\$283	\$241	\$824	\$609	\$803	\$246	\$317
<b>UAH</b>	<b>\$89,325</b>	<b>\$88,439</b>	<b>\$96,865</b>	<b>\$94,376</b>	<b>\$99,405</b>	<b>\$109,744</b>	<b>\$131,648</b>	<b>\$149,792</b>
Comp. and information sciences	\$22,533	\$24,366	\$27,819	\$27,191	\$26,973	\$29,177	\$36,636	\$48,967
Engineering	\$41,665	\$35,720	\$35,151	\$32,555	\$34,105	\$40,733	\$51,198	\$55,510
Geosc., atmosph., & ocean sc.	\$11,382	\$11,781	\$13,440	\$13,866	\$12,552	\$16,001	\$17,304	\$17,960
Life sciences	\$1,438	\$1,307	\$2,004	\$1,864	\$2,528	\$2,815	\$3,170	\$2,620
Mathematics and statistics	\$408	\$540	\$596	\$512	\$500	\$627	\$726	\$709
Non-S&E	\$3,331	\$3,694	\$5,316	\$4,984	\$4,886	\$4,920	\$7,326	\$7,902
Physical sciences	\$7,808	\$9,075	\$9,888	\$10,415	\$14,459	\$12,963	\$13,353	\$15,071
Psychology	\$227	\$267	\$289	\$124	\$175	\$183	\$218	\$233
Social sciences	\$533	\$1,689	\$2,362	\$2,865	\$3,227	\$2,325	\$1,717	\$820
<b>Total</b>	<b>\$571,028</b>	<b>\$662,902</b>	<b>\$697,239</b>	<b>\$719,509</b>	<b>\$759,604</b>	<b>\$800,924</b>	<b>\$845,074</b>	<b>\$923,631</b>

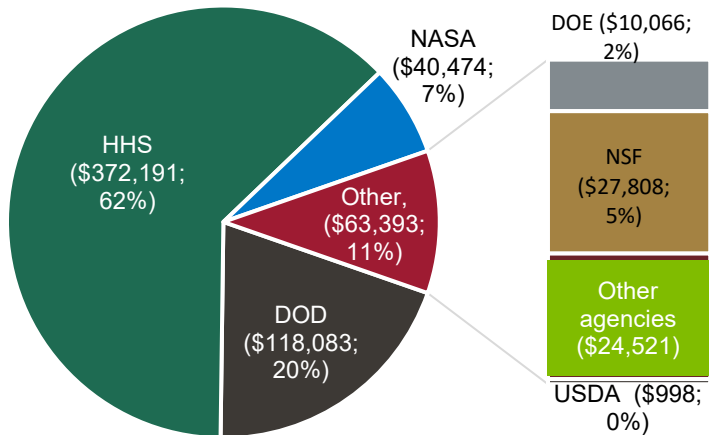
Source: Higher Education Research and Development Survey (HERD)





Federally Funded R&D Expenditures

**\$594,141**



## R&D Expenditures by Source of Funding (Dollars in Thousands)

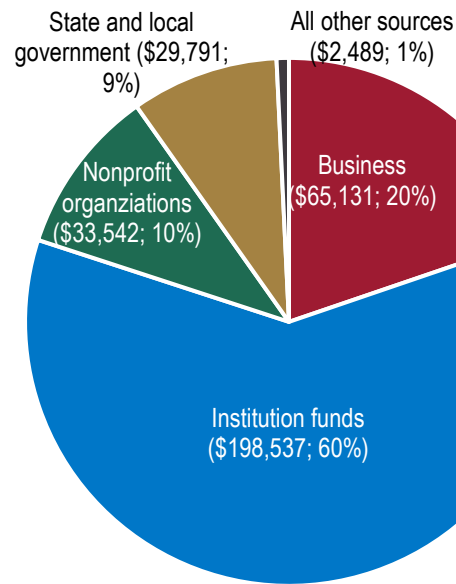
	2014	2015	2016	2017	2018	2019	2020	2021
<b>UA</b>	<b>\$53,140</b>	<b>\$58,234</b>	<b>\$62,549</b>	<b>\$63,282</b>	<b>\$71,992</b>	<b>\$83,317</b>	<b>\$95,200</b>	<b>\$129,509</b>
<b>Federal</b>	<b>\$26,161</b>	<b>\$28,988</b>	<b>\$28,425</b>	<b>\$27,692</b>	<b>\$30,447</b>	<b>\$37,916</b>	<b>\$43,017</b>	<b>\$53,880</b>
DOD	\$2,367	\$2,389	\$2,954	\$2,620	\$2,503	\$3,428	\$6,693	\$7,238
DOE	\$2,882	\$2,995	\$2,493	\$2,216	\$2,794	\$3,893	\$4,496	\$5,763
HHS	\$4,270	\$5,208	\$5,317	\$6,640	\$5,312	\$6,158	\$7,514	\$11,545
NASA	\$881	\$1,118	\$1,108	\$1,086	\$1,397	\$1,463	\$1,391	\$1,688
NSF	\$7,399	\$6,566	\$7,130	\$7,548	\$10,077	\$9,954	\$10,698	\$13,801
USDA	\$475	\$326	\$396	\$390	\$373	\$595	\$558	\$595
Other agencies	\$7,887	\$10,386	\$9,027	\$7,192	\$7,991	\$12,425	\$11,667	\$13,250
<b>Non-federal</b>	<b>\$26,979</b>	<b>\$29,246</b>	<b>\$34,124</b>	<b>\$35,590</b>	<b>\$41,545</b>	<b>\$45,401</b>	<b>\$52,183</b>	<b>\$75,629</b>
Business	\$2,060	\$2,252	\$2,440	\$1,945	\$2,917	\$2,799	\$2,525	\$2,679
Institution funds	\$16,641	\$18,828	\$21,422	\$22,563	\$27,111	\$30,801	\$32,141	\$55,682
Nonprofit organizations	\$447	\$375	\$486	\$1,084	\$850	\$977	\$1,071	\$1,291
State and local government	\$7,137	\$7,220	\$9,258	\$9,585	\$9,607	\$9,791	\$16,018	\$15,693
All other sources	\$694	\$571	\$518	\$413	\$1,060	\$1,033	\$428	\$284
<b>UAB</b>	<b>\$428,563</b>	<b>\$516,229</b>	<b>\$537,825</b>	<b>\$561,851</b>	<b>\$588,207</b>	<b>\$607,863</b>	<b>\$618,226</b>	<b>\$644,330</b>
<b>Federal</b>	<b>\$280,333</b>	<b>\$328,531</b>	<b>\$348,632</b>	<b>\$358,916</b>	<b>\$373,360</b>	<b>\$398,403</b>	<b>\$400,110</b>	<b>\$423,290</b>
DOD	\$12,352	\$21,996	\$20,177	\$26,393	\$26,029	\$29,147	\$37,281	\$37,824
DOE	\$1,232	\$7,027	\$7,256	\$8,239	\$6,717	\$5,778	\$5,945	\$3,487
HHS	\$243,401	\$275,414	\$299,666	\$302,624	\$313,677	\$337,055	\$332,215	\$360,322
NASA	\$7,079	\$11,159	\$10,812	\$9,634	\$12,118	\$11,500	\$11,153	\$9,847
NSF	\$7,029	\$6,978	\$5,665	\$6,066	\$7,137	\$7,462	\$6,680	\$6,607
USDA	\$23	\$77	\$44	\$8	\$77	\$89	\$74	\$260
Other agencies	\$9,217	\$5,880	\$5,012	\$5,952	\$7,605	\$7,372	\$6,762	\$4,943
<b>Non-federal</b>	<b>\$148,230</b>	<b>\$187,698</b>	<b>\$189,193</b>	<b>\$202,935</b>	<b>\$214,847</b>	<b>\$209,460</b>	<b>\$218,116</b>	<b>\$221,040</b>
Business	\$25,325	\$48,540	\$50,040	\$57,874	\$60,726	\$60,048	\$58,758	\$61,764
Institution funds	\$102,632	\$111,925	\$106,745	\$109,918	\$115,860	\$106,085	\$116,242	\$116,561
Nonprofit organizations	\$19,075	\$21,832	\$26,738	\$29,280	\$30,200	\$31,893	\$33,706	\$31,641
State and local government	\$1,198	\$3,401	\$5,670	\$5,403	\$7,508	\$11,434	\$8,209	\$9,355
All other sources		\$2,000		\$460	\$553		\$1,201	\$1,719

Source: Higher Education Research and Development Survey (HERD)



Non-federally Funded R&D Expenditures

**\$329,490**



## R&D Expenditures by Source of Funding

(Dollars in Thousands)

	2014	2015	2016	2017	2018	2019	2020	2021
<b>UAH</b>	<b>\$89,325</b>	<b>\$88,439</b>	<b>\$96,865</b>	<b>\$94,376</b>	<b>\$99,405</b>	<b>\$109,744</b>	<b>\$131,648</b>	<b>\$149,792</b>
<b>Federal</b>	<b>\$75,343</b>	<b>\$67,451</b>	<b>\$69,824</b>	<b>\$68,609</b>	<b>\$74,650</b>	<b>\$85,211</b>	<b>\$104,288</b>	<b>\$116,971</b>
DOD	\$49,941	\$40,251	\$42,163	\$38,982	\$40,095	\$47,429	\$61,157	\$73,021
DOE	\$864	\$551	\$365	\$438	\$212	\$462	\$416	\$816
HHS	\$303	\$289	\$123	\$334	\$470	\$696	\$578	\$324
NASA	\$19,158	\$19,520	\$19,653	\$21,766	\$23,352	\$23,676	\$27,270	\$28,939
NSF	\$3,201	\$3,517	\$4,043	\$4,098	\$7,095	\$8,654	\$8,210	\$7,400
USDA	\$682	\$815	\$506	\$150	\$185	\$246	\$189	\$143
Other agencies	\$1,194	\$2,508	\$2,971	\$2,841	\$3,241	\$4,048	\$6,468	\$6,328
<b>Non-federal</b>	<b>\$13,982</b>	<b>\$20,988</b>	<b>\$27,041</b>	<b>\$25,767</b>	<b>\$24,755</b>	<b>\$24,533</b>	<b>\$27,360</b>	<b>\$32,821</b>
Business	\$1,441	\$1,403	\$2,124	\$1,439	\$1,001	\$1,069	\$970	\$688
Institution funds	\$11,320	\$18,099	\$22,370	\$21,965	\$21,886	\$21,663	\$22,569	\$26,294
Nonprofit organizations	\$113	\$9	\$355	\$510	\$297	\$301	\$282	\$610
State and local government	\$822	\$1,450	\$2,022	\$1,358	\$1,442	\$1,378	\$3,407	\$4,743
All other sources	\$286	\$27	\$170	\$495	\$129	\$122	\$132	\$486
<b>UAS Total</b>	<b>\$571,028</b>	<b>\$662,902</b>	<b>\$697,239</b>	<b>\$719,509</b>	<b>\$759,604</b>	<b>\$800,924</b>	<b>\$845,074</b>	<b>\$923,631</b>
<b>Federal</b>	<b>\$381,837</b>	<b>\$424,970</b>	<b>\$446,881</b>	<b>\$455,217</b>	<b>\$478,457</b>	<b>\$521,530</b>	<b>\$547,415</b>	<b>\$594,141</b>
DOD	\$64,660	\$64,636	\$65,294	\$67,995	\$68,627	\$80,004	\$105,131	\$118,083
DOE	\$4,978	\$10,573	\$10,114	\$10,893	\$9,723	\$10,133	\$10,857	\$10,066
HHS	\$247,974	\$280,911	\$305,106	\$309,598	\$319,459	\$343,909	\$340,307	\$372,191
NASA	\$27,118	\$31,797	\$31,573	\$32,486	\$36,867	\$36,639	\$39,814	\$40,474
NSF	\$17,629	\$17,061	\$16,838	\$17,712	\$24,309	\$26,070	\$25,588	\$27,808
USDA	\$1,180	\$1,218	\$946	\$548	\$635	\$930	\$821	\$998
Other agencies	\$18,298	\$18,774	\$17,010	\$15,985	\$18,837	\$23,845	\$24,897	\$24,521
<b>Non-federal</b>	<b>\$189,191</b>	<b>\$237,932</b>	<b>\$250,358</b>	<b>\$264,292</b>	<b>\$281,147</b>	<b>\$279,394</b>	<b>\$297,659</b>	<b>\$329,490</b>
Business	\$28,826	\$52,195	\$54,604	\$61,258	\$64,644	\$63,916	\$62,253	\$65,131
Institution funds	\$130,593	\$148,852	\$150,537	\$154,446	\$164,857	\$158,549	\$170,952	\$198,537
Nonprofit organizations	\$19,635	\$22,216	\$27,579	\$30,874	\$31,347	\$33,171	\$35,059	\$33,542
State and local government	\$9,157	\$12,071	\$16,950	\$16,346	\$18,557	\$22,603	\$27,634	\$29,791
All other sources	\$980	\$2,598	\$688	\$1,368	\$1,742	\$1,155	\$1,761	\$2,489

Source: Higher Education Research and Development Survey (HERD)

UAS Data Summary, January 2022

Page 41

# Statements of Net Position

## The University of Alabama



2021  
End of Year  
Net Position  
**\$2,860,293,498**

2021  
Assets and Deferred  
Outflows of Resources  
**\$5,825,102,191**

2021  
Liabilities  
**\$2,759,330,528**

	2017	2018	2019	2020	2021
<b>Current assets</b>	<b>586,593,318</b>	<b>553,887,777</b>	<b>616,255,540</b>	<b>723,434,517</b>	<b>872,046,615</b>
Cash and cash equivalents	58,865,537	75,384,248	110,653,924	160,981,277	90,380,380
Short-term investments	306,944,426	260,676,941	283,159,572	343,068,171	550,519,440
Accounts receivable, net	100,624,536	96,091,544	91,811,771	91,105,769	95,903,170
Other current assets	120,158,819	121,735,044	130,630,273	128,279,300	135,243,625
<b>Noncurrent assets</b>	<b>3,686,031,117</b>	<b>3,845,999,816</b>	<b>4,140,639,918</b>	<b>4,138,242,706</b>	<b>4,542,487,283</b>
Restricted cash and cash equivalents	2,753,537	3,399,556	4,746,827	13,984,227	5,670,374
Endowment and life income investments	785,374,066	845,934,399	832,842,409	820,554,775	1,088,951,950
Investments for capital activities	426,683,893	339,549,277	650,087,836	432,015,246	400,827,180
Capital assets, net	1,983,596,717	2,100,055,575	2,172,997,368	2,374,645,592	2,476,676,075
Other noncurrent assets	487,622,904	557,061,009	479,965,478	497,042,866	570,361,704
<b>Deferred outflows of resources</b>	<b>158,389,969</b>	<b>175,548,131</b>	<b>199,303,561</b>	<b>185,886,393</b>	<b>410,568,293</b>
Pension and OPEB obligations	144,365,221	162,406,491	180,721,290	168,514,132	394,406,042
Other deferred outflows of resources	14,024,748	13,141,640	18,582,271	17,372,261	16,162,251
<b>Total assets and deferred outflows</b>	<b>4,431,014,404</b>	<b>4,575,435,724</b>	<b>4,956,199,019</b>	<b>5,047,563,616</b>	<b>5,825,102,191</b>
<b>Current liabilities</b>	<b>594,343,066</b>	<b>534,275,339</b>	<b>569,959,721</b>	<b>522,961,652</b>	<b>555,788,512</b>
Accounts payable and accrued liabilities	144,556,466	143,398,543	139,091,428	157,835,424	149,411,555
Current portion of unearned revenue	304,119,075	306,806,133	353,128,982	299,997,609	321,417,138
Deposits	113,330,935	51,389,406	35,251,861	23,805,922	20,104,012
Current portion of long-term debt	32,336,590	32,681,257	42,487,450	41,322,697	43,028,018
Line of credit					21,827,789
<b>Noncurrent liabilities</b>	<b>1,685,516,066</b>	<b>1,850,454,892</b>	<b>2,134,390,365</b>	<b>1,999,301,337</b>	<b>2,203,542,016</b>
Federal advances - loan funds	9,691,088	9,894,351	8,393,239	8,664,137	8,210,856
Long-term debt, net	1,041,305,641	1,005,691,287	1,251,641,581	1,208,064,263	1,157,022,377
Pension liability	623,398,000	565,233,000	594,410,000	646,185,000	739,566,000
OPEB liability		257,683,278	267,378,182	108,975,155	276,972,007
Other noncurrent liabilities	11,121,337	11,952,976	12,567,363	27,412,782	21,770,776
<b>Total liabilities</b>	<b>2,279,859,132</b>	<b>2,384,730,231</b>	<b>2,704,350,086</b>	<b>2,522,262,989</b>	<b>2,759,330,528</b>
<b>Deferred inflows of resources</b>	<b>16,054,000</b>	<b>89,599,673</b>	<b>95,211,670</b>	<b>201,932,480</b>	<b>205,478,165</b>
Pension and OPEB obligations	16,054,000	86,757,158	92,807,931	199,594,551	202,561,162
Deferred inflows of resources, other		2,842,515	2,403,739	2,337,929	2,917,003
<b>Net position</b>	<b>2,135,101,272</b>	<b>2,101,105,820</b>	<b>2,156,637,263</b>	<b>2,323,368,147</b>	<b>2,860,293,498</b>
Net investment in capital assets	1,076,735,303	1,151,792,864	1,210,048,918	1,322,651,902	1,355,627,568
Restricted-nonexpendable	431,499,195	458,967,808	480,733,622	502,203,055	543,461,482
Restricted-expendable	386,414,207	432,404,952	417,325,242	436,716,309	653,094,564
Unrestricted	240,452,567	57,940,196	48,529,481	61,796,881	308,109,884
<b>Total liabilities, deferred inflows of resources and net position</b>	<b>4,431,014,404</b>	<b>4,575,435,724</b>	<b>4,956,199,019</b>	<b>5,047,563,616</b>	<b>5,825,102,191</b>

The amounts presented above include the University and its blended component unit, the Crimson Tide Foundation.

Source: The University of Alabama Annual Financial Reports

UAS Data Summary, May 2022

# Statements of Net Position

## The University of Alabama at Birmingham



2021  
End of Year  
Net Position  
**\$3,119,394,283**

2021  
Assets and Deferred  
Outflows of Resources  
**\$7,625,981,235**

2021  
Liabilities  
**\$3,981,141,398**

	2017	2018	2019	2020	2021
<b>Current assets</b>	<b>1,710,595,950</b>	<b>1,829,451,447</b>	<b>2,071,860,183</b>	<b>2,502,144,919</b>	<b>2,854,225,459</b>
Cash and cash equivalents	402,323,457	341,288,837	380,593,397	641,920,794	473,086,415
Short-term investments	889,971,001	999,762,476	1,084,308,490	1,196,891,055	1,626,016,694
Accounts receivable, net	346,583,676	379,353,664	481,727,985	530,828,890	608,413,710
Other current assets	71,717,816	109,046,470	125,230,311	132,504,180	146,708,640
<b>Noncurrent assets</b>	<b>3,110,622,214</b>	<b>3,223,521,555</b>	<b>3,460,103,991</b>	<b>3,429,405,194</b>	<b>3,909,140,760</b>
Restricted cash and cash equivalents*	22,213,402	13,578,310	141,864,878	63,368,334	47,530,089
Endowment and life income investments	495,444,170	524,782,469	537,457,828	539,974,716	711,622,472
Investments for capital activities	848,706,636	807,541,053	825,529,381	797,791,901	1,079,385,621
Capital assets, net	1,600,940,041	1,647,560,771	1,723,027,158	1,784,230,411	1,788,161,516
Other noncurrent assets	143,317,965	230,058,952	232,224,746	244,039,832	282,441,062
<b>Deferred outflows of resources</b>	<b>212,145,497</b>	<b>297,526,667</b>	<b>313,741,542</b>	<b>318,830,730</b>	<b>862,615,016</b>
Pension and OPEB obligations	197,907,000	284,267,363	301,435,989	305,494,017	850,533,926
Other deferred outflows of resources	14,238,497	13,259,304	12,305,553	13,336,713	12,081,090
<b>Total assets and deferred outflows</b>	<b>5,033,363,661</b>	<b>5,350,499,669</b>	<b>5,845,705,716</b>	<b>6,250,380,843</b>	<b>7,625,981,235</b>
<b>Current liabilities</b>	<b>564,064,026</b>	<b>532,298,414</b>	<b>544,331,398</b>	<b>800,205,475</b>	<b>785,042,866</b>
Accounts payable and accrued liabilities	379,142,524	338,881,337	342,830,127	596,371,343	565,985,667
Current portion of unearned revenue	134,644,494	144,553,055	150,331,709	150,006,083	164,173,628
Deposits	12,556,458	13,912,936	15,788,813	15,078,378	17,439,588
Current portion of long-term debt	37,720,550	34,951,086	35,380,749	38,749,671	37,443,982
<b>Noncurrent liabilities</b>	<b>2,251,669,042</b>	<b>2,754,500,058</b>	<b>2,998,164,006</b>	<b>2,640,898,752</b>	<b>3,196,098,532</b>
Federal advances - loan funds	13,538,130	12,374,410	11,056,522	8,483,518	6,780,063
Long-term debt, net	939,147,663	902,290,484	1,127,090,695	1,087,186,699	1,063,644,857
Pension liability	1,284,396,000	1,161,162,000	1,168,305,000	1,245,083,000	1,413,306,000
OPEB liability		664,329,034	677,611,841	271,431,941	685,712,303
Other noncurrent liabilities	14,587,249	14,344,130	14,099,948	28,713,594	26,655,309
<b>Total liabilities</b>	<b>2,815,733,068</b>	<b>3,286,798,472</b>	<b>3,542,495,404</b>	<b>3,441,104,227</b>	<b>3,981,141,397</b>
<b>Deferred inflows of resources</b>	<b>70,124,653</b>	<b>218,264,713</b>	<b>224,814,872</b>	<b>521,937,116</b>	<b>525,445,555</b>
Pension and OPEB obligations	70,055,000	218,210,406	224,773,994	521,937,116	525,445,555
Deferred inflows of resources, other	69,653	54,307	40,878		
<b>Net position</b>	<b>2,147,505,940</b>	<b>1,845,436,484</b>	<b>2,078,395,440</b>	<b>2,287,339,500</b>	<b>3,119,394,283</b>
Net investment in capital assets	704,791,969	744,768,861	759,496,749	769,281,767	786,585,310
Restricted-nonexpendable	359,844,678	386,738,832	401,733,396	405,615,948	390,793,182
Restricted-expendable	337,272,370	354,341,414	377,422,933	353,055,159	600,618,098
Unrestricted	745,596,923	359,587,377	539,742,362	759,386,626	1,341,397,693
<b>Total liabilities, deferred inflows of resources and net position</b>	<b>5,033,363,661</b>	<b>5,350,499,669</b>	<b>5,845,705,716</b>	<b>6,250,380,843</b>	<b>7,625,981,235</b>

\*Includes cash designated for capital activities

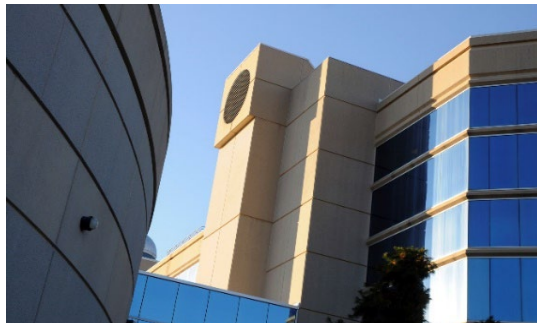
The amounts presented above include the University and its blended component unit, the UAB Athletic Foundation.

Source: The University of Alabama at Birmingham Annual Financial Reports



# Statements of Net Position

## The University of Alabama in Huntsville



2021  
End of Year  
Net Position  
**\$124,814,577**

2021  
Assets and Deferred  
Outflows of Resources  
**\$656,398,639**

2021  
Liabilities  
**\$484,823,334**

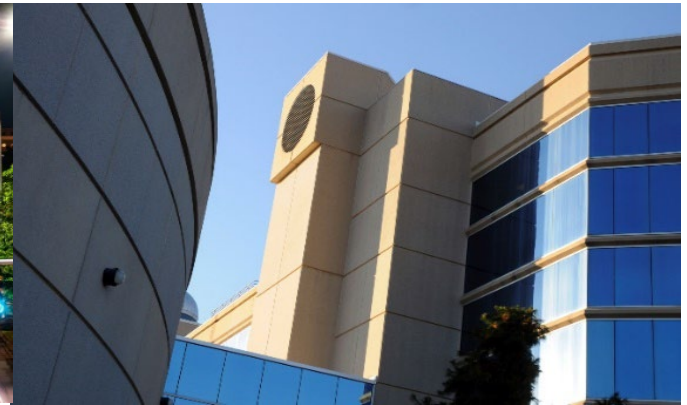
	2017	2018	2019	2020	2021
<b>Current assets</b>	<b>120,081,297</b>	<b>120,009,299</b>	<b>115,007,493</b>	<b>114,048,255</b>	<b>132,880,827</b>
Cash and cash equivalents	12,502,465	31,943,600	29,564,137	42,590,181	61,716,183
Short-term investments	65,786,136	39,294,940	23,782,952	11,687,721	5,472,369
Accounts receivable, net	25,651,203	30,403,827	39,971,336	39,384,004	46,040,430
Other current assets	16,141,493	18,366,932	21,689,068	20,386,349	19,651,845
<b>Noncurrent assets</b>	<b>330,954,118</b>	<b>362,832,311</b>	<b>407,035,636</b>	<b>407,055,475</b>	<b>424,807,196</b>
Restricted cash and cash equivalents	637,878	4,127,889	19,153,493	8,593,145	6,200,150
Endowment and life income investments	34,138,879	35,126,425	34,043,115	33,254,580	47,264,155
Investments for capital activities	21,382,000	25,417,000	41,035,400	51,937,678	66,732,908
Capital assets, net	272,008,654	295,483,325	310,234,994	310,845,959	302,315,333
Other noncurrent assets	2,786,707	2,677,672	2,568,634	2,424,113	2,294,650
<b>Deferred outflows of resources</b>	<b>29,180,939</b>	<b>32,894,090</b>	<b>35,809,718</b>	<b>36,476,893</b>	<b>98,710,616</b>
Pension and OPEB obligations	29,180,939	32,894,090	35,809,718	36,476,893	98,710,616
<b>Total assets and deferred outflows</b>	<b>480,216,354</b>	<b>515,735,700</b>	<b>557,852,847</b>	<b>557,580,623</b>	<b>656,398,639</b>
<b>Current liabilities</b>	<b>71,997,883</b>	<b>71,564,101</b>	<b>90,508,497</b>	<b>85,787,067</b>	<b>88,182,330</b>
Accounts payable and accrued liabilities	24,545,606	20,020,633	31,473,006	27,901,849	34,886,943
Current portion of unearned revenue	38,136,944	42,595,428	49,315,513	48,527,840	47,294,620
Deposits	4,219,095	4,225,891	4,411,829	4,098,522	479,767
Current portion of long-term debt	5,096,238	4,722,149	5,308,149	5,258,856	5,521,000
<b>Noncurrent liabilities</b>	<b>255,732,726</b>	<b>324,923,772</b>	<b>355,755,364</b>	<b>332,992,839</b>	<b>396,641,004</b>
Federal advances - loan funds	380,330	505,113	601,011	721,113	791,231
Long-term debt, net	90,220,396	123,145,440	147,773,906	147,637,713	141,912,317
Pension liability	165,132,000	147,428,000	150,951,000	161,346,000	192,513,000
OPEB liability		53,845,219	56,429,447	23,288,013	61,424,456
<b>Total liabilities</b>	<b>327,730,609</b>	<b>396,487,873</b>	<b>446,263,861</b>	<b>418,779,906</b>	<b>484,823,334</b>
<b>Deferred inflows of resources</b>	<b>9,472,000</b>	<b>26,728,420</b>	<b>25,324,831</b>	<b>46,357,210</b>	<b>46,760,728</b>
Pension and OPEB obligations	9,472,000	26,728,420	25,324,831	46,357,210	46,760,728
<b>Net position</b>	<b>143,013,745</b>	<b>92,519,407</b>	<b>86,264,155</b>	<b>92,443,507</b>	<b>124,814,577</b>
Net investment in capital assets	171,194,003	168,455,369	165,385,148	165,514,356	162,862,000
Restricted-nonexpendable	9,944,805	9,990,561	10,020,768	10,052,197	14,741,173
Restricted-expendable	16,114,461	18,303,547	12,180,318	11,039,538	14,839,551
Unrestricted	(54,239,524)	(104,230,070)	(101,322,079)	(94,162,584)	(67,628,147)
<b>Total liabilities, deferred inflows of resources and net position</b>	<b>480,216,354</b>	<b>515,735,700</b>	<b>557,852,847</b>	<b>557,580,623</b>	<b>656,398,639</b>

Source: The University of Alabama in Huntsville Annual Financial Reports

UAS Data Summary, May 2022

Page 44





2021  
End of Year  
Net Position

**\$7,575,305**

2021  
Assets and Deferred  
Outflows of Resources

**\$47,764,122**

2021  
Liabilities

**\$35,040,259**

## Statements of Net Position

### University of Alabama System Office

	2017	2018	2019	2020	2021
<b>Current assets</b>	<b>3,353,334</b>	<b>2,690,547</b>	<b>3,116,550</b>	<b>4,519,955</b>	<b>5,152,535</b>
Cash and cash equivalents	1,642,077	1,410,053	1,363,263	2,398,556	3,572,577
Accounts receivable, net	1,670,504	1,239,741	1,753,287	2,121,399	1,579,958
Other current assets	40,753	40,753			
<b>Noncurrent assets</b>	<b>23,504,875</b>	<b>25,475,110</b>	<b>25,648,611</b>	<b>25,599,050</b>	<b>31,031,901</b>
Capital assets, net	12,549,345	12,201,689	12,406,674	12,141,699	15,199,185
Other noncurrent assets	10,955,530	13,273,421	13,241,937	13,457,351	15,832,716
<b>Deferred outflows of resources</b>	<b>4,752,464</b>	<b>5,260,125</b>	<b>5,284,335</b>	<b>4,906,054</b>	<b>11,579,686</b>
Pension and OPEB obligations	4,752,464	5,260,125	5,284,335	4,906,054	11,579,686
<b>Total assets and deferred outflows</b>	<b>31,610,673</b>	<b>33,425,782</b>	<b>34,049,496</b>	<b>35,025,059</b>	<b>47,764,122</b>
<b>Current liabilities</b>	<b>3,329,642</b>	<b>3,021,585</b>	<b>3,566,251</b>	<b>4,440,557</b>	<b>6,136,266</b>
Accounts payable and accrued liabilities	3,329,642	3,021,585	3,566,251	4,440,557	6,136,266
<b>Noncurrent liabilities</b>	<b>18,342,000</b>	<b>22,104,453</b>	<b>22,816,505</b>	<b>20,721,771</b>	<b>28,903,993</b>
Pension liability	18,342,000	15,575,000	16,046,000	17,924,000	21,932,000
OPEB liability		6,529,453	6,770,505	2,797,771	6,971,993
<b>Total liabilities</b>	<b>21,671,642</b>	<b>25,126,038</b>	<b>26,382,756</b>	<b>25,162,328</b>	<b>35,040,259</b>
<b>Deferred inflows of resources</b>	<b>665,000</b>	<b>3,321,715</b>	<b>3,159,931</b>	<b>5,266,180</b>	<b>5,148,558</b>
Pension and OPEB obligations	665,000	3,321,715	3,159,931	5,266,180	5,148,558
<b>Net position</b>	<b>9,274,031</b>	<b>4,978,029</b>	<b>4,506,809</b>	<b>4,596,551</b>	<b>7,575,305</b>
Net investment in capital assets	12,549,345	12,201,689	12,406,674	12,141,699	15,199,185
Unrestricted	(3,275,314)	(7,223,660)	(7,899,865)	(7,545,148)	(7,623,880)
<b>Total liabilities, deferred inflows of resources and net position</b>	<b>31,610,673</b>	<b>33,425,782</b>	<b>34,049,496</b>	<b>35,025,059</b>	<b>47,764,122</b>

Source: University of Alabama System Office Annual Financial Reports

# Statements of Revenues, Expenses, and Changes in Net Position

## The University of Alabama



2021  
End of Year  
Net Position  
**\$2,860,293,498**

2021  
Operating Revenues  
**\$872,233,658**

2021  
Nonoperating Revenues  
(Expenses)  
**\$736,666,343**

	2017	2018	2019	2020	2021
<b>Operating revenues</b>	<b>833,649,655</b>	<b>875,085,138</b>	<b>906,835,177</b>	<b>870,652,902</b>	<b>872,233,658</b>
Tuition and fees, net	482,761,041	516,765,773	532,541,233	525,521,122	481,899,451
Federal operating grants and contracts	40,416,650	44,549,124	54,497,395	61,180,497	75,652,584
State operating grants and contracts	31,261,415	31,215,296	31,209,610	31,189,670	31,175,136
Local operating grants and contracts	1,016,793	991,806	942,937	1,200,281	1,137,504
Private operating grants and contracts	3,836,612	5,589,320	6,838,737	4,587,580	7,100,867
Sales and services of auxiliary enterprises	202,333,172	200,256,134	201,829,933	158,930,066	208,438,946
Sales and services of educ. activities	12,776,616	12,644,047	12,167,759	9,866,923	11,262,637
Other sources - operating	59,247,356	63,073,638	66,807,573	78,176,763	55,566,533
<b>Operating expenses</b>	<b>1,016,919,818</b>	<b>1,061,866,729</b>	<b>1,108,966,258</b>	<b>1,033,692,957</b>	<b>1,130,646,348</b>
Salaries, wages, and benefits	666,320,083	699,755,982	728,517,509	711,111,598	732,870,387
Supplies and services	253,651,612	262,939,882	275,323,598	205,449,757	248,087,351
Depreciation	72,374,750	75,485,224	78,865,931	81,695,869	85,702,738
Scholarships and fellowships	24,573,373	23,685,641	26,259,220	35,435,733	63,985,872
<b>Nonoperating revenues (expenses)</b>	<b>362,876,879</b>	<b>286,134,987</b>	<b>205,236,191</b>	<b>233,369,217</b>	<b>736,666,343</b>
State educational appropriations	154,836,324	156,742,802	169,733,687	182,797,957	190,568,533
Gifts	56,126,778	48,858,002	29,440,777	54,380,178	64,036,452
Grants	31,599,501	33,197,108	32,849,900	51,528,484	115,131,392
Investment income (net)	159,687,169	90,064,841	12,791,392	(10,630,633)	406,674,867
Interest expense	(37,735,938)	(41,124,252)	(37,195,807)	(39,045,098)	(37,087,397)
Other nonoper. income/expenses (net)	(1,636,955)	(1,603,514)	(2,383,758)	(5,661,671)	(2,657,504)
<b>Income before other changes in net pos.</b>	<b>179,606,716</b>	<b>99,353,396</b>	<b>3,105,110</b>	<b>70,329,162</b>	<b>478,253,653</b>
<b>Other changes in net position</b>	<b>44,713,013</b>	<b>89,428,192</b>	<b>52,426,333</b>	<b>96,401,722</b>	<b>58,671,698</b>
State capital appropriations					657,766
Capital gifts and grants	18,696,113	65,669,021	33,713,554	75,191,053	19,291,609
Additions/adjustments to endowments	23,675,029	24,899,225	19,730,916	26,868,269	34,292,210
Intragovernmental transfers	2,341,871	(1,140,054)	(1,018,137)	(5,657,600)	4,430,113
<b>Increase in net position</b>	<b>224,319,729</b>	<b>188,781,588</b>	<b>55,531,443</b>	<b>166,730,884</b>	<b>536,925,351</b>
<b>Net position, beginning of year</b>	<b>1,910,781,543</b>	<b>2,135,101,272</b>	<b>2,101,105,820</b>	<b>2,156,637,263</b>	<b>2,323,368,147</b>
Cum. effect of new accounting guidance		(222,777,040)			
Net position, beginning of year (restated)	1,910,781,543	1,912,324,232	2,101,105,820	2,156,637,263	2,323,368,147
<b>Net position, end of year</b>	<b>2,135,101,272</b>	<b>2,101,105,820</b>	<b>2,156,637,263</b>	<b>2,323,368,147</b>	<b>2,860,293,498</b>

The amounts presented above include the University and its blended component unit, the Crimson Tide Foundation.

Source: The University of Alabama Annual Financial Reports

# Statements of Revenues, Expenses, and Changes in Net Position

## The University of Alabama at Birmingham



2021  
End of Year  
Net Position  
**\$3,119,394,283**

2021  
Operating Revenues  
**\$4,133,307,349**

2021  
Nonoperating Revenues  
(Expenses)  
**\$1,009,587,087**

	2017	2018	2019	2020	2021
<b>Operating revenues</b>	<b>3,084,238,857</b>	<b>3,404,474,421</b>	<b>3,602,383,812</b>	<b>3,712,470,836</b>	<b>4,133,307,349</b>
Tuition and fees, net	208,481,228	253,707,923	239,912,344	244,929,737	243,476,387
Federal operating grants and contracts	354,409,094	370,528,637	399,343,773	392,328,131	431,152,917
State operating grants and contracts	10,548,285	8,057,617	10,967,871	9,637,192	10,601,841
Local operating grants and contracts	2,350,134	2,999,958	2,535,753	2,743,274	2,733,401
Private operating grants and contracts	72,370,499	80,047,182	81,199,945	79,212,985	82,238,852
Sales and services of auxiliary enterprises	599,580,100	690,422,963	715,700,011	762,448,115	782,355,857
Sales and services of hospitals	1,708,864,967	1,864,755,549	2,008,319,151	2,109,833,577	2,472,801,416
Sales and services of educ. activities	69,216,946	68,464,868	67,616,490	59,351,275	67,666,602
Other sources - operating	58,417,604	65,489,724	76,788,474	51,986,550	40,280,076
<b>Operating expenses</b>	<b>3,353,597,836</b>	<b>3,583,867,788</b>	<b>3,772,700,839</b>	<b>3,953,876,475</b>	<b>4,349,258,810</b>
Salaries, wages, and benefits	1,598,699,146	1,674,990,688	1,749,060,938	1,766,044,825	1,963,628,897
Supplies and services	1,590,907,613	1,734,410,959	1,846,254,490	2,001,552,207	2,174,043,204
Depreciation	137,431,750	146,686,513	148,344,143	150,994,130	156,533,614
Scholarships and fellowships	26,559,327	27,779,628	29,041,268	35,285,313	55,053,095
<b>Nonoperating revenues (expenses)</b>	<b>463,331,930</b>	<b>395,805,610</b>	<b>374,382,098</b>	<b>430,739,578</b>	<b>1,009,587,087</b>
State educational appropriations	272,166,253	273,351,124	287,691,735	306,964,712	314,953,056
Gifts	35,726,160	37,888,497	48,327,432	18,705,016	61,112,310
Grants	30,638,381	34,713,042	35,451,482	129,137,659	105,506,173
Investment income (net)	157,849,551	90,152,323	32,247,107	15,735,962	555,919,121
Interest expense	(33,472,892)	(28,964,461)	(29,755,042)	(40,126,392)	(35,280,621)
Other nonoper. income/expenses (net)	424,477	(11,334,915)	419,384	322,621	7,377,048
<b>Income before other changes in net pos.</b>	<b>193,972,951</b>	<b>216,412,243</b>	<b>204,065,071</b>	<b>189,333,939</b>	<b>793,635,626</b>
<b>Other changes in net position</b>	<b>36,409,679</b>	<b>19,891,746</b>	<b>28,893,885</b>	<b>19,610,121</b>	<b>38,419,157</b>
State capital appropriations	563,090				
Capital gifts and grants	15,997,447	2,285,326	789,319	1,854,223	5,256,027
Additions/adjustments to endowments	19,849,142	18,401,517	28,104,566	17,755,898	33,163,130
Intragovernmental transfers		(795,097)			
<b>Increase in net position</b>	<b>230,382,630</b>	<b>236,303,989</b>	<b>232,958,956</b>	<b>208,944,060</b>	<b>832,054,783</b>
<b>Net position, beginning of year</b>	<b>1,917,123,310</b>	<b>2,147,505,940</b>	<b>1,845,436,484</b>	<b>2,078,395,440</b>	<b>2,287,339,500</b>
Cum. effect of new accounting guidance		(538,373,445)			
<b>Net position, beginning of year (restated)</b>	<b>1,917,123,310</b>	<b>1,609,132,495</b>	<b>1,845,436,484</b>	<b>2,078,395,440</b>	<b>2,287,339,500</b>
<b>Net position, end of year</b>	<b>2,147,505,940</b>	<b>1,845,436,484</b>	<b>2,078,395,440</b>	<b>2,287,339,500</b>	<b>3,119,394,283</b>

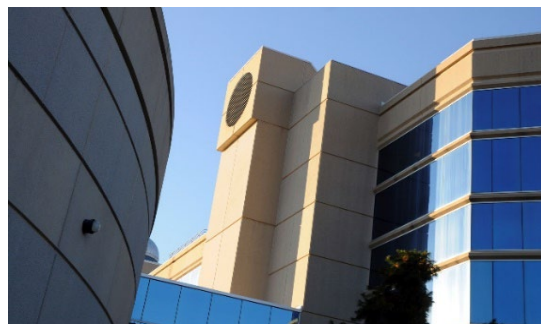
The amounts presented above include the University and its blended component unit, the UAB Athletic Foundation.

Source: The University of Alabama at Birmingham Annual Financial Reports



# Statements of Revenues, Expenses, and Changes in Net Position

## The University of Alabama in Huntsville



2021  
End of Year  
Net Position  
**\$124,814,577**

2021  
Operating Revenues  
**\$294,568,209**

2021  
Nonoperating Revenues  
(Expenses)  
**\$108,861,901**

	2018	2019	2020	2020	2021
<b>Operating revenues</b>	<b>156,278,435</b>	<b>167,435,999</b>	<b>184,515,197</b>	<b>203,201,705</b>	<b>215,826,017</b>
Tuition and fees, net	62,397,294	67,638,989	69,513,946	71,219,313	71,283,876
Federal operating grants and contracts	72,467,222	77,317,933	89,185,692	105,431,257	122,216,296
State operating grants and contracts	4,117,407	3,919,899	3,775,885	4,373,211	4,609,046
Private operating grants and contracts	2,301,327	1,740,491	1,914,579	2,262,876	1,808,959
Sales and services of auxiliary enterprises	10,572,674	11,353,348	14,474,450	15,924,237	11,512,344
Sales and services of educ. activities	4,422,511	5,465,339	5,650,645	3,990,811	4,395,496
<b>Operating expenses</b>	<b>223,569,910</b>	<b>235,395,096</b>	<b>250,384,130</b>	<b>261,335,136</b>	<b>294,568,209</b>
Salaries, wages, and benefits	160,210,876	164,700,313	169,949,845	175,461,558	190,481,360
Supplies and services	44,771,190	50,218,743	59,793,188	63,438,366	71,413,290
Depreciation	16,043,553	17,143,814	17,167,013	18,124,586	18,273,914
Scholarships and fellowships	2,544,291	3,332,226	3,474,084	4,310,626	14,399,645
<b>Nonoperating revenues (expenses)</b>	<b>65,747,338</b>	<b>60,786,379</b>	<b>58,575,714</b>	<b>63,468,048</b>	<b>108,861,901</b>
State educational appropriations	47,833,247	48,352,459	52,365,051	55,333,602	57,378,734
Gifts	3,289,744	3,067,873	2,791,768	2,182,254	7,868,683
Grants	7,942,044	9,021,580	9,416,081	14,054,697	27,651,693
Investment income (net)	10,240,992	4,849,274	186,866	(1,026,843)	22,034,405
Interest expense	(3,442,330)	(4,223,715)	(6,165,545)	(7,038,136)	(5,962,315)
Other nonoper. income/expenses (net)	(116,359)	(281,092)	(18,507)	(37,526)	(109,299)
<b>Income before other changes in net pos.</b>	<b>(1,544,137)</b>	<b>(7,172,718)</b>	<b>(7,293,219)</b>	<b>5,334,617</b>	<b>30,119,709</b>
<b>Other changes in net position</b>	<b>1,224,153</b>	<b>2,559,163</b>	<b>1,037,967</b>	<b>844,735</b>	<b>2,251,361</b>
Capital gifts and grants	623,722	2,161,614	1,037,967	844,735	2,251,361
Additions/adjustments to endowments	600,431				
Intragovernmental transfers		397,549			
<b>Increase in net position</b>	<b>(319,984)</b>	<b>(4,613,555)</b>	<b>(6,255,252)</b>	<b>6,179,352</b>	<b>32,371,070</b>
<b>Net position, beginning of year</b>	<b>143,333,729</b>	<b>143,013,745</b>	<b>92,519,407</b>	<b>86,264,155</b>	<b>92,443,507</b>
Cum. effect of new accounting guidance		(45,880,783)			
Net position, beginning of year (restated)	143,333,729	97,132,962	92,519,407	86,264,155	92,443,507
<b>Net position, end of year</b>	<b>143,013,745</b>	<b>92,519,407</b>	<b>86,264,155</b>	<b>92,443,507</b>	<b>124,814,577</b>



## Statements of Revenues, Expenses, and Changes in Net Position

2021  
End of Year  
Net Position

**\$7,575,305**

2021  
Operating Revenues  
**\$21,848,974**

2021  
Nonoperating Revenues  
(Expenses)  
**\$2,380,443**

### University of Alabama System Office

	2017	2018	2019	2020	2021
<b>Operating revenues</b>	<b>20,975,716</b>	<b>20,480,700</b>	<b>20,480,700</b>	<b>21,848,976</b>	<b>21,848,974</b>
Other sources - operating	20,975,716	20,480,700	20,480,700	21,848,976	21,848,974
<b>Operating expenses</b>	<b>22,402,138</b>	<b>20,037,210</b>	<b>20,929,410</b>	<b>21,485,455</b>	<b>21,250,663</b>
Salaries, wages, and benefits	17,539,685	16,564,456	16,992,583	18,207,468	17,984,217
Supplies and services	4,475,008	3,091,051	3,556,812	2,865,442	2,857,094
Depreciation	387,445	381,703	380,015	412,545	409,352
<b>Nonoperating revenues (expenses)</b>	<b>908,801</b>	<b>423,086</b>	<b>(22,510)</b>	<b>(273,779)</b>	<b>2,380,443</b>
Investment income (net)	908,801	420,190	(31,484)	(284,586)	2,375,365
Other nonoperating income/expenses (net)		2,896	8,974	10,807	5,078
<b>Increase in net position</b>	<b>(517,621)</b>	<b>866,576</b>	<b>(471,220)</b>	<b>89,742</b>	<b>2,978,754</b>
<b>Net position, beginning of year</b>	<b>9,791,652</b>	<b>9,274,031</b>	<b>4,978,029</b>	<b>4,506,809</b>	<b>4,596,551</b>
Cum. effect of new accounting guidance		(5,162,578)			
Net position, beginning of year (restated)	9,791,652	4,111,453	4,978,029	4,506,809	4,596,551
<b>Net position, end of year</b>	<b>9,274,031</b>	<b>4,978,029</b>	<b>4,506,809</b>	<b>4,596,551</b>	<b>7,575,305</b>





# **University of Alabama System**

---

THE UNIVERSITY OF ALABAMA  
THE UNIVERSITY OF ALABAMA AT BIRMINGHAM  
THE UNIVERSITY OF ALABAMA IN HUNTSVILLE  
THE UAB HEALTH SYSTEM

## **System Analytics and Business Intelligence Office of Academic and Student Affairs**

500 University Blvd. E | Tuscaloosa, AL 35401  
(205) 348-8347