



**University of  
Alabama System®**

# Data Summary

(2024-2025)



## UNIVERSITY OF ALABAMA SYSTEM BOARD OF TRUSTEES



**Mike Brock**  
2ND CONGRESSIONAL  
DISTRICT



**Karen Brooks**  
7TH CONGRESSIONAL  
DISTRICT



**Myla E. Calhoun**  
6TH CONGRESSIONAL  
DISTRICT



**Angus R. Cooper III**  
1ST CONGRESSIONAL  
DISTRICT



**Ronald Gray**  
5TH CONGRESSIONAL  
DISTRICT



**Jeff Gronberg**  
5TH CONGRESSIONAL  
DISTRICT



**O.B. Grayson Hall Jr.**  
6TH CONGRESSIONAL  
DISTRICT



**Barbara Humphrey**  
7TH CONGRESSIONAL  
DISTRICT



**W. Davis Malone III**  
2ND CONGRESSIONAL  
DISTRICT



**Evelyn V. Mauldin**  
4TH CONGRESSIONAL  
DISTRICT



**Harris Morrisette**  
1ST CONGRESSIONAL  
DISTRICT



**J. Steven Roy**  
3RD CONGRESSIONAL  
DISTRICT



**Kenneth Simon**  
7TH CONGRESSIONAL  
DISTRICT



**Kenneth Vandervoort, M.D.**  
3RD CONGRESSIONAL  
DISTRICT



**Scott Phelps**  
4TH CONGRESSIONAL  
DISTRICT, PRESIDENT  
PRO TEMPORE



**Kay Ivey**  
GOVERNOR, STATE OF  
ALABAMA, PRESIDENT  
EX-OFFICIO



**Sid J. Trant**  
CHANCELLOR

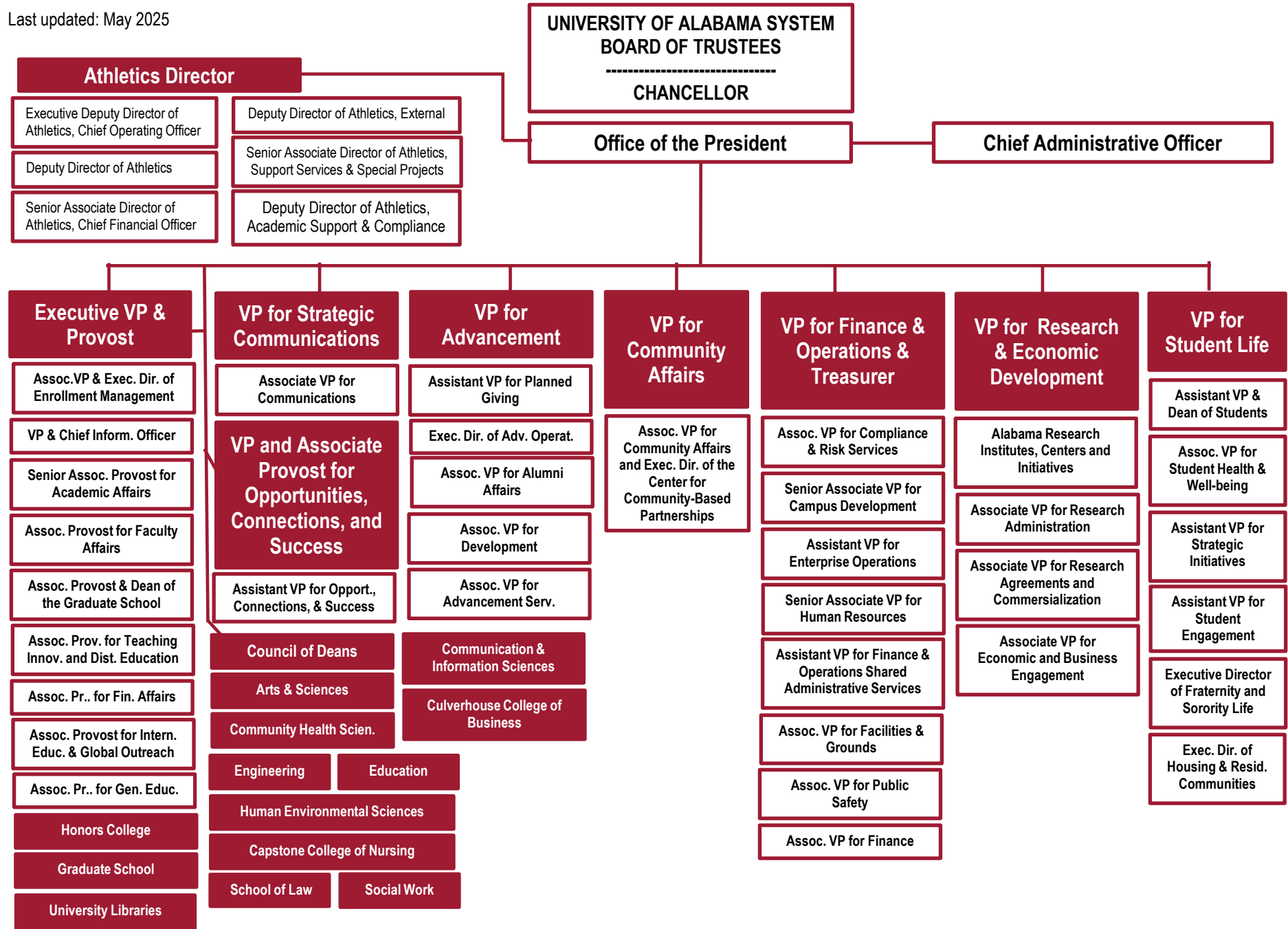


**Mark Foley**  
SECRETARY OF THE  
BOARD OF TRUSTEES



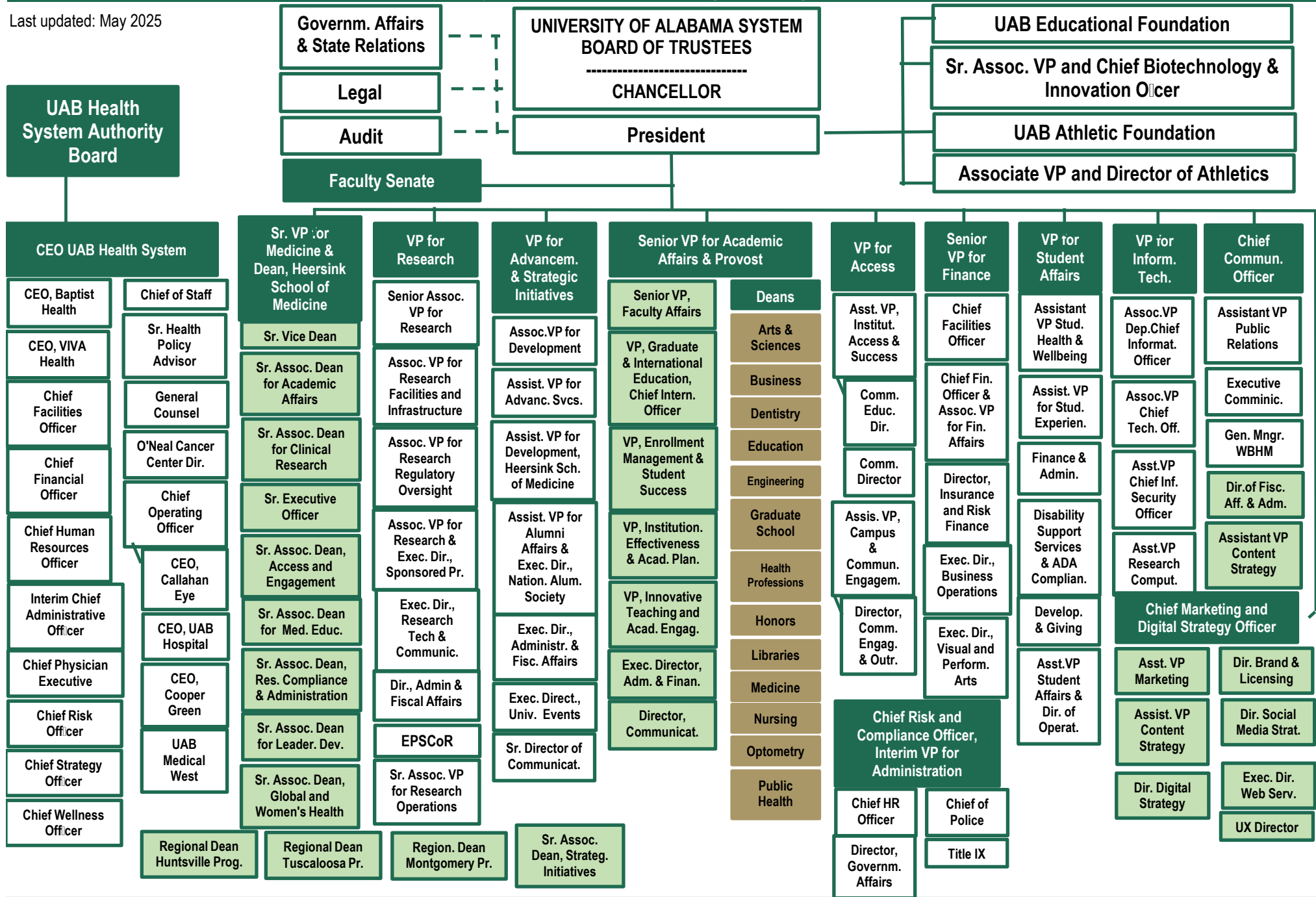
# The University of Alabama Organizational Chart

Last updated: May 2025



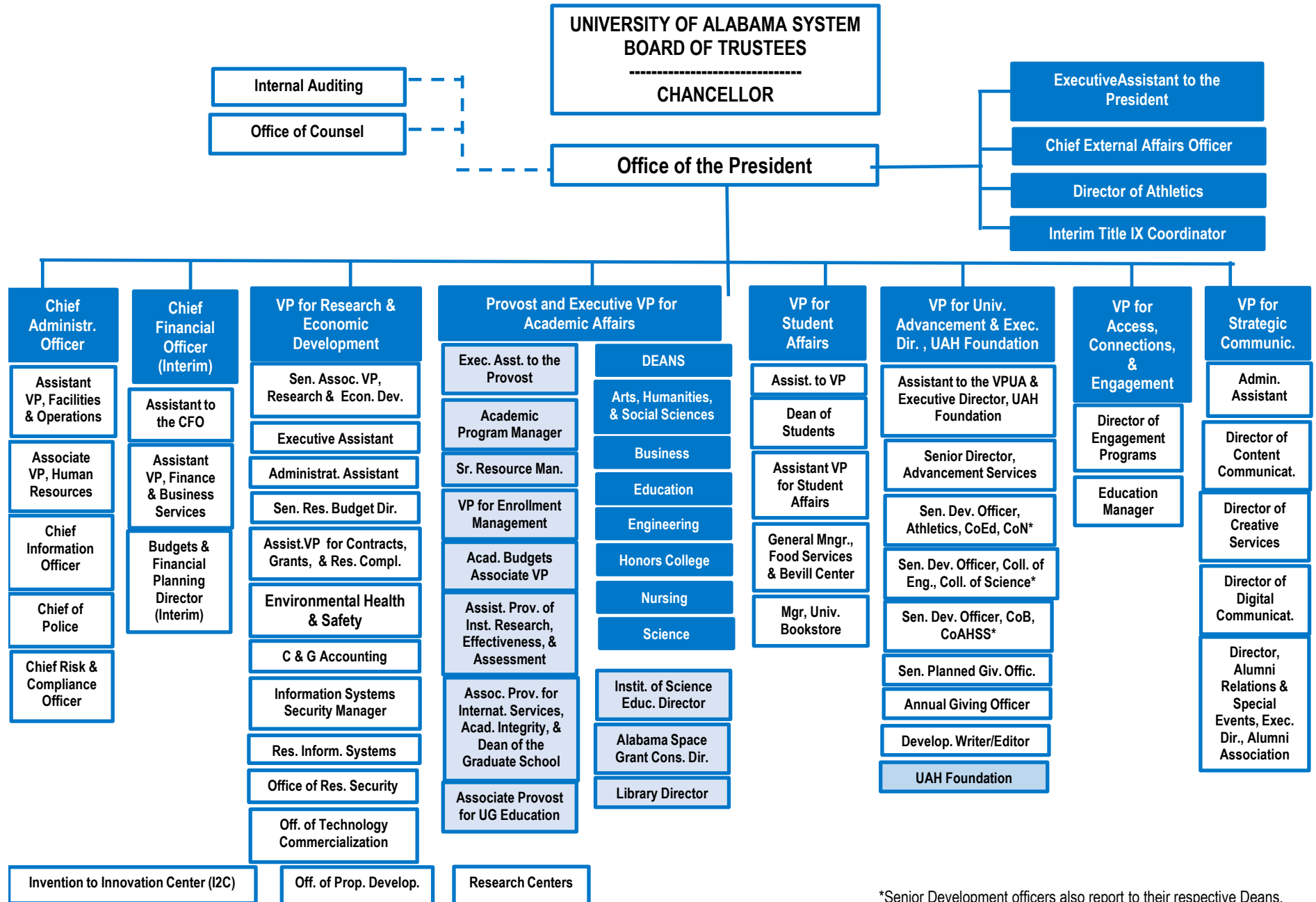
# The University of Alabama at Birmingham Organizational Chart

Last updated: May 2025



# The University of Alabama in Huntsville Organizational Chart

Last updated: May 2025



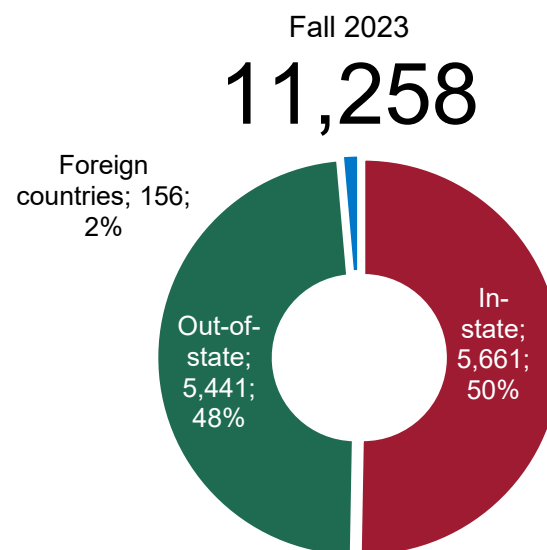
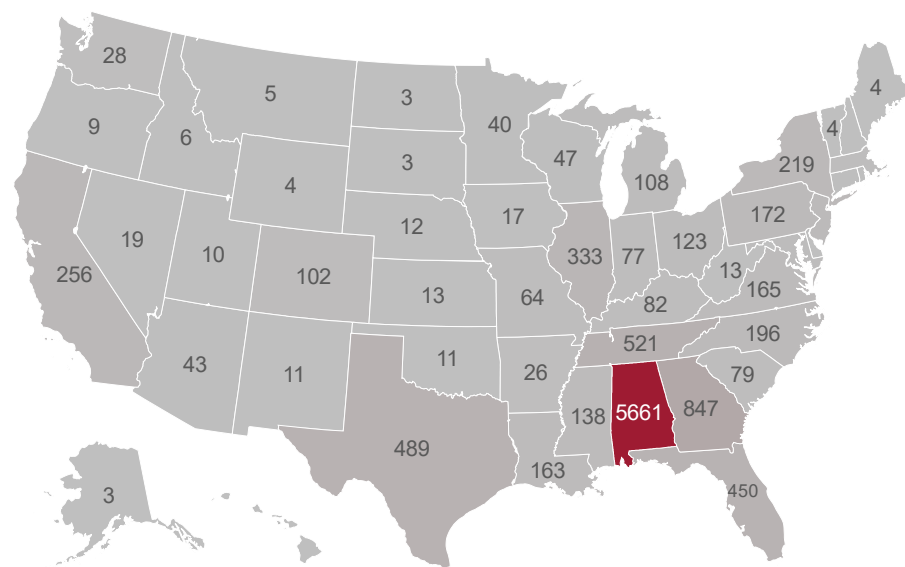
\*Senior Development officers also report to their respective Deans.

## Admissions and Test Scores

	2007	2008	2009	2010	2011	2012	2013	2014	2015	2016	2017	2018	2019	2020	2021	2022	2023	2024
<b>UA</b>																		
Applications	14,313	18,500	18,967	20,112	22,136	26,409	30,975	33,736	36,203	38,237	38,129	37,302	38,505	39,560	42,421	54,072	58,418	56,795
Admissions	9,140	11,172	11,133	10,776	9,636	14,019	17,515	17,221	19,400	20,107	20,321	22,032	31,835	31,804	33,472	43,290	44,295	43,531
Acceptance rate	64%	60%	59%	54%	44%	53%	57%	51%	54%	53%	53%	59%	83%	80%	79%	80%	76%	77%
Enrollment	4,538	5,116	5,148	5,563	5,766	6,397	6,454	6,824	7,211	7,559	7,407	6,663	6,764	6,507	7,593	8,037	8,279	8,032
Yield rate	50%	46%	46%	52%	60%	46%	37%	40%	37%	38%	36%	30%	21%	20%	23%	19%	19%	18%
# Submitting SAT	1,593	1,720	1,797	1,068	1,200	1,433	1,469	1,590	1,536	1,459	1,397	1,669	1,808	1,492	1,302	1,339	1,468	1,218
% Submitting SAT	35%	34%	35%	19%	21%	22%	23%	23%	21%	19%	19%	25%	27%	23%	17%	17%	18%	15%
# Submitting ACT	3,898	4,439	4,305	4,316	4,447	4,803	4,883	5,208	5,599	6,062	5,981	4,873	4,892	4,986	4,795	3,594	3,756	3,477
% Submitting ACT	86%	87%	84%	78%	77%	75%	76%	76%	78%	80%	81%	73%	72%	77%	63%	45%	45%	43%
ACT Comp, 25th perc.	21	21	21	22	22	22	22	22	22	23	23	23	23	23	21	23	24	24
ACT Comp, 75th perc.	27	27	28	29	29	30	30	31	31	31	32	31	31	31	31	31	31	31
<b>UAB</b>																		
Applications	4,221	5,106	4,418	4,667	5,575	5,575	5,689	5,710	7,672	9,459	7,555	7,845	8,298	10,113	11,906	9,947	10,919	11,379
Admissions	3,705	4,345	3,692	3,847	4,027	4,027	4,934	4,893	4,636	5,499	6,936	7,226	6,112	8,415	10,541	8,622	9,655	10,034
Acceptance rate	88%	85%	84%	82%	72%	72%	87%	86%	60%	58%	92%	92%	74%	83%	89%	87%	88%	88%
Enrollment	1,531	2,213	1,517	1,571	1,605	1,605	1,773	1,748	1,621	2,021	2,299	2,299	2,346	2,154	2,415	2,217	2,095	2,014
Yield rate	41%	51%	41%	41%	40%	40%	36%	36%	35%	37%	33%	32%	38%	26%	23%	26%	22%	20%
# Submitting SAT	128	90	92	67	79	79	103	92	106	85	15	7	312	302	166	145	112	88
% Submitting SAT	8%	4%	6%	4%	5%	5%	6%	5%	7%	4%	1%	0%	13%	14%	7%	7%	5%	4%
# Submitting ACT	1,278	1,185	1,411	1,494	1,500	1,500	1,645	1,628	1,497	1,849	2,093	2,253	2,159	2,119	1,565	1,081	1,342	860
% Submitting ACT	83%	54%	93%	95%	93%	93%	93%	93%	92%	91%	91%	98%	92%	98%	65%	49%	64%	43%
ACT Comp, 25th perc.	21	21	21	21	21	21	22	21	22	21	21	21	22	22	23	23	22	23
ACT Comp, 75th perc.	27	27	27	27	27	27	28	27	28	28	28	29	29	30	30	30	30	30
<b>UAH</b>																		
Applications	1,850	1,874	1,924	1,846	1,952	1,938	2,054	2,104	3,308	4,545	4,454	4,543	5,295	5,793	5,781	5,581	6,074	7,630
Admissions	1,628	1,671	1,387	1,221	1,243	1,505	1,656	1,726	2,686	3,467	3,618	3,674	4,372	4,467	4,259	4,359	4,510	5,232
Acceptance rate	88%	89%	72%	66%	64%	78%	81%	82%	81%	76%	81%	81%	83%	77%	74%	78%	74%	69%
Enrollment	800	796	802	622	677	624	651	724	1,038	1,213	1,352	1,435	1,497	1,345	1,204	1,172	1,176	1,212
Yield rate	49%	48%	58%	51%	54%	41%	39%	42%	39%	35%	37%	39%	34%	30%	28%	27%	26%	23%
# Submitting SAT	195	191	171	113	126	120	118	111	183	166	29	8	108	213	65	74	86	57
% Submitting SAT	24%	24%	21%	18%	19%	19%	18%	15%	18%	14%	2%	1%	7%	16%	5%	6%	7%	5%
# Submitting ACT	730	723	740	575	623	581	610	690	975	1,152	1,292	1,331	1,380	1,252	1,108	649	984	680
% Submitting ACT	91%	91%	92%	92%	92%	93%	94%	95%	94%	95%	96%	93%	92%	93%	92%	55%	84%	56%
ACT Comp, 25th perc.	22	22	22	22	22	22	23	24	24	25	25	25	25	24	24	25	24	24
ACT Comp, 75th perc.	27	27	28	29	29	29	29	30	30	31	31	31	31	31	31	30	31	31

*Data Source (years prior to 2024):* Integrated Postsecondary Education Data System (IPEDS). *Data Source (2024):* campus preliminary reports.

## First-time Freshmen by Geographic Origin



	1996	2000	2002	2004	2005	2006	2008	2010	2012	2013	2014	2016	2018	2019	2020	2021	2022	2023	2024
<b>UA</b>	<b>2,066</b>	<b>2,956</b>	<b>2,654</b>	<b>3,367</b>	<b>3,735</b>	<b>4,378</b>	<b>5,116</b>	<b>5,519</b>	<b>6,371</b>	<b>6,454</b>	<b>6,824</b>	<b>7,559</b>	<b>6,663</b>	<b>6,764</b>	<b>6,507</b>	<b>7,593</b>	<b>8,037</b>	<b>8,279</b>	<b>8,032</b>
In-state	1,384	2,214	2,028	2,441	2,592	2,898	3,221	3,121	2,846	2,578	2,462	2,412	2,270	2,532	2,700	2,848	2,797	2,956	3,219
% In-state	67%	75%	76%	72%	69%	66%	63%	57%	45%	40%	36%	32%	34%	37%	41%	38%	35%	36%	40%
Out-of-state	645	719	602	909	1,137	1,451	1,880	2,339	3,327	3,714	4,269	5,089	4,267	4,150	3,772	4,701	5,190	5,272	4,739
Foreign countries	37	23	24	17	6	29	15	59	198	162	93	58	126	82	35	44	50	51	74
<b>UAB</b>	<b>1,131</b>	<b>1,314</b>	<b>1,471</b>	<b>1,628</b>	<b>1,587</b>	<b>1,531</b>	<b>1,277</b>	<b>1,571</b>	<b>1,676</b>	<b>1,773</b>	<b>1,748</b>	<b>2,021</b>	<b>2,299</b>	<b>2,346</b>	<b>2,154</b>	<b>2,415</b>	<b>2,217</b>	<b>2,095</b>	<b>2,014</b>
In-state	1,038	1,185	1,337	1,474	1,430	1,377	1,155	1,407	1,452	1,529	1,471	1,712	1,917	1,954	1,763	1,989	1,821	1,716	1,624
% In-state	92%	90%	91%	91%	90%	90%	90%	90%	87%	86%	84%	85%	83%	83%	82%	82%	82%	82%	81%
Out-of-state	71	90	108	123	124	133	104	151	206	225	243	262	355	362	362	401	365	344	320
Foreign countries	22	39	26	31	33	21	18	13	18	19	34	47	27	30	29	25	31	35	70
<b>UAH</b>	<b>442</b>	<b>606</b>	<b>628</b>	<b>680</b>	<b>660</b>	<b>838</b>	<b>796</b>	<b>622</b>	<b>624</b>	<b>651</b>	<b>724</b>	<b>1,213</b>	<b>1,435</b>	<b>1,497</b>	<b>1,345</b>	<b>1,204</b>	<b>1,172</b>	<b>1,179</b>	<b>1,212</b>
In-state	360	477	484	559	524	704	650	503	505	514	581	861	920	936	884	816	836	795	818
% In-state	81%	79%	77%	82%	79%	84%	82%	81%	81%	79%	80%	71%	64%	63%	66%	68%	71%	67%	67%
Out-of-state	60	124	132	103	113	105	127	106	109	110	133	323	480	527	446	375	319	368	382
Foreign countries	22	5	12	18	23	29	19	13	10	27	10	29	35	34	15	13	17	16	12
<b>Total</b>	<b>3,639</b>	<b>4,876</b>	<b>4,753</b>	<b>5,675</b>	<b>5,982</b>	<b>6,747</b>	<b>7,189</b>	<b>7,712</b>	<b>8,671</b>	<b>8,878</b>	<b>9,296</b>	<b>10,793</b>	<b>10,397</b>	<b>10,607</b>	<b>10,006</b>	<b>11,212</b>	<b>11,426</b>	<b>11,553</b>	<b>11,258</b>

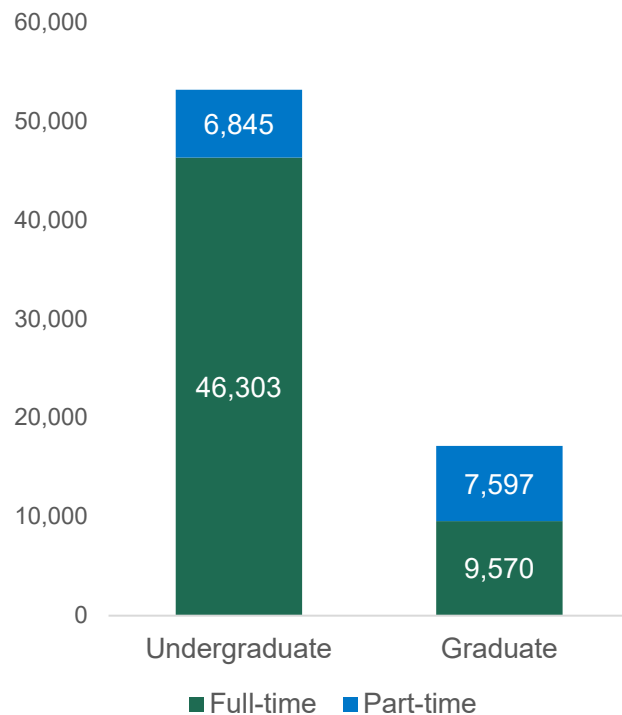
*Data Source (years prior to 2018): Integrated Postsecondary Education Data System (IPEDS). Data Source (2018-2024) : campus reports.*





Fall 2024 Enrollment

70,315



## Enrollment by Level and Status

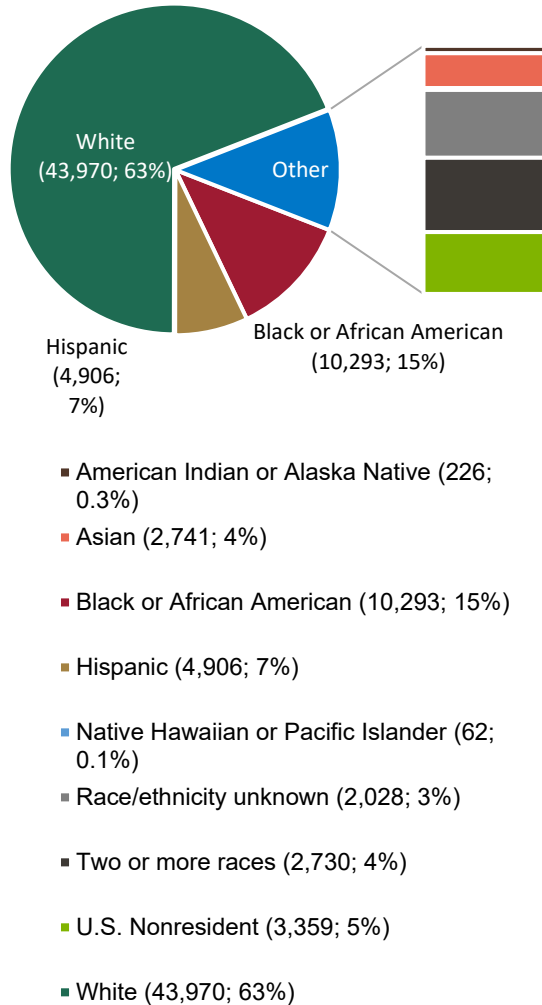
	2015	2016	2017	2018	2019	2020	2021	2022	2023	2024
<b>UA</b>	<b>37,098</b>	<b>37,663</b>	<b>38,563</b>	<b>38,390</b>	<b>38,100</b>	<b>37,840</b>	<b>38,316</b>	<b>38,644</b>	<b>39,622</b>	<b>40,846</b>
Undergraduate	31,958	32,563	33,305	33,028	32,795	31,670	31,685	32,458	33,435	34,389
Full-time	28,689	29,220	29,923	29,586	29,135	27,750	28,124	28,958	30,003	31,038
Part-time	3,269	3,343	3,382	3,442	3,660	3,920	3,561	3,500	3,432	3,351
Graduate	5,140	5,100	5,258	5,362	5,305	6,170	6,631	6,186	6,187	6,457
Full-time	3,321	3,268	3,375	3,452	3,460	3,783	3,771	3,635	3,660	3,870
Part-time	1,819	1,832	1,883	1,910	1,845	2,387	2,860	2,551	2,527	2,587
<b>UAB</b>	<b>18,333</b>	<b>19,535</b>	<b>20,902</b>	<b>21,923</b>	<b>22,080</b>	<b>22,563</b>	<b>22,289</b>	<b>21,639</b>	<b>21,160</b>	<b>20,905</b>
Undergraduate	11,511	12,369	13,134	13,836	13,836	13,878	13,547	13,032	12,382	11,959
Full-time	8,297	8,971	9,677	10,042	10,315	10,402	10,401	10,263	9,841	9,592
Part-time	3,214	3,398	3,457	3,794	3,521	3,476	3,146	2,769	2,541	2,367
Graduate	6,822	7,166	7,768	8,087	8,244	8,685	8,742	8,607	8,778	8,946
Full-time	3,515	3,720	4,057	4,178	4,287	4,478	4,525	4,817	4,974	5,087
Part-time	3,307	3,446	3,711	3,909	3,957	4,207	4,217	3,790	3,804	3,859
<b>UAH</b>	<b>7,866</b>	<b>8,468</b>	<b>9,101</b>	<b>9,736</b>	<b>9,988</b>	<b>10,000</b>	<b>9,636</b>	<b>9,237</b>	<b>8,743</b>	<b>8,564</b>
Undergraduate	6,013	6,507	7,090	7,671	7,989	8,027	7,569	7,169	6,851	6,800
Full-time	4,774	5,257	5,903	6,393	6,749	6,730	6,223	5,861	5,644	5,673
Part-time	1,239	1,250	1,187	1,278	1,240	1,297	1,346	1,308	1,207	1,127
Graduate	1,853	1,961	2,011	2,065	1,999	1,973	2,067	2,068	1,892	1,764
Full-time	708	760	742	732	601	615	674	726	631	613
Part-time	1,145	1,201	1,269	1,333	1,398	1,358	1,393	1,342	1,261	1,151
<b>Grand Total</b>	<b>63,297</b>	<b>65,666</b>	<b>68,566</b>	<b>70,049</b>	<b>70,168</b>	<b>70,403</b>	<b>70,241</b>	<b>69,520</b>	<b>69,525</b>	<b>70,315</b>

*Data Source (years prior to 2024):* Integrated Postsecondary Education Data System (IPEDS). *Data Source (2024):* campus preliminary reports.



## African American Students

15%



## Enrollment by Race/Ethnicity

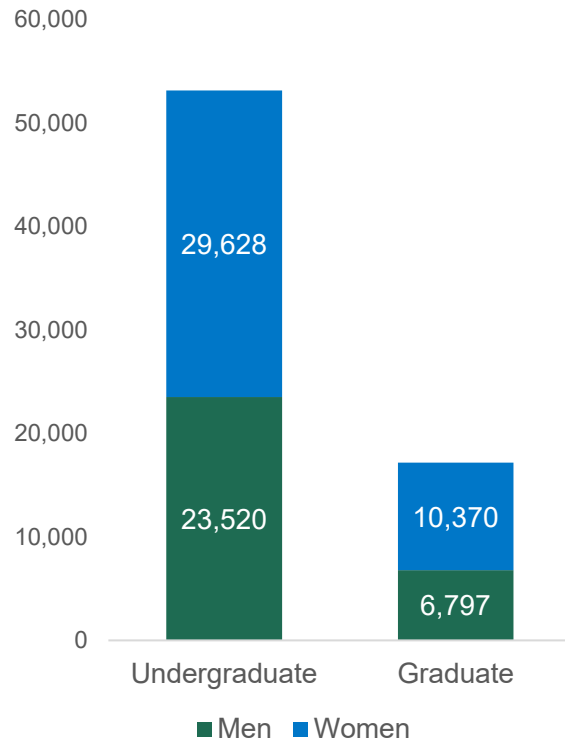
	2015	2016	2017	2018	2019	2020	2021	2022	2023	2024
<b>UA</b>	<b>37,098</b>	<b>37,663</b>	<b>38,563</b>	<b>38,390</b>	<b>38,100</b>	<b>37,840</b>	<b>38,316</b>	<b>38,644</b>	<b>39,622</b>	<b>40,846</b>
American Indian or Alaska Native	137	146	132	139	147	127	137	134	113	144
Asian	455	481	471	466	494	544	589	608	630	679
Black or African American	4,123	4,057	4,081	4,038	4,002	4,144	4,277	4,344	4,579	4,887
Hispanic	1,440	1,582	1,736	1,831	1,835	1,870	2,037	2,137	2,610	2,914
Native Hawaiian / Pacific Islander	36	37	43	42	43	31	30	41	40	37
Race/ethnicity unknown	146	171	209	240	240	247	325	1,355	1,299	1,324
Two or more races	943	1,049	1,176	1,242	1,266	1,286	1,277	1,277	1,370	1,450
U.S. Nonresident	1,509	1,312	1,171	1,224	1,454	1,176	1,151	1,118	1,114	1,207
White	28,309	28,828	29,544	29,168	28,619	28,415	28,493	27,630	27,867	28,204
<b>UAB</b>	<b>18,333</b>	<b>19,535</b>	<b>20,902</b>	<b>21,923</b>	<b>22,080</b>	<b>22,563</b>	<b>22,289</b>	<b>21,639</b>	<b>21,160</b>	<b>20,905</b>
American Indian or Alaska Native	48	58	64	59	47	59	52	36	38	28
Asian	1,009	1,094	1,180	1,305	1,380	1,466	1,527	1,551	1,671	1,695
Black or African American	3,851	4,184	4,435	4,795	4,622	4,746	4,758	4,590	4,588	4,586
Hispanic	554	593	673	672	977	1,050	1,092	1,111	1,279	1,384
Native Hawaiian / Pacific Islander	12	10	8	6	4	8	6	10	12	12
Race/ethnicity unknown	182	276	298	289	326	826	602	985	638	379
Two or more races	613	672	744	828	781	358	825	825	881	896
U.S. Nonresident	656	777	970	1,049	1,107	1,084	1,110	1,476	1,728	1,873
White	11,408	11,871	12,530	12,920	12,836	12,966	12,317	11,055	10,325	10,052
<b>UAH</b>	<b>7,866</b>	<b>8,468</b>	<b>9,101</b>	<b>9,736</b>	<b>9,988</b>	<b>10,000</b>	<b>9,636</b>	<b>9,237</b>	<b>8,743</b>	<b>8,564</b>
American Indian or Alaska Native	97	99	102	97	95	77	70	71	58	54
Asian	292	328	354	364	352	356	344	358	368	367
Black or African American	889	896	947	946	894	910	893	833	798	820
Hispanic	284	317	383	458	506	530	524	555	559	608
Native Hawaiian / Pacific Islander	0	0	7	6	20	16	15	16	15	13
Race/ethnicity unknown	250	284	82	383	483	504	474	347	301	325
Two or more races	136	135	206	245	303	364	357	354	386	384
U.S. Nonresident	508	522	491	449	411	341	298	361	358	279
White	5,410	5,887	6,529	6,788	6,924	6,902	6,661	6,342	5,900	5,714
<b>Total</b>	<b>63,297</b>	<b>65,666</b>	<b>68,566</b>	<b>70,049</b>	<b>70,168</b>	<b>70,403</b>	<b>70,241</b>	<b>69,520</b>	<b>69,525</b>	<b>70,315</b>

Data Source (years prior to 2024): Integrated Postsecondary Education Data System (IPEDS). Data Source (2024): campus preliminary reports.



Female Students

57%



## Enrollment by Level and Sex

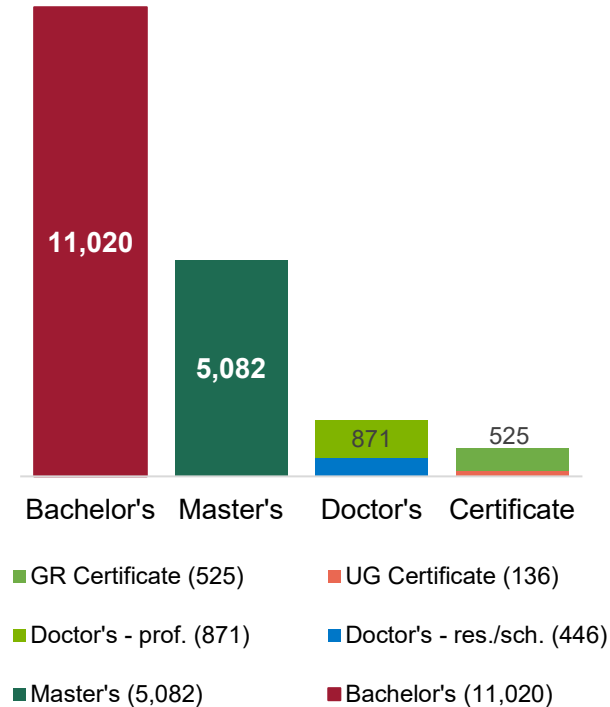
	2015	2016	2017	2018	2019	2020	2021	2022	2023	2024
<b>UA</b>	<b>37,098</b>	<b>37,663</b>	<b>38,563</b>	<b>38,390</b>	<b>38,100</b>	<b>37,840</b>	<b>38,316</b>	<b>38,644</b>	<b>39,622</b>	<b>40,846</b>
Undergraduate	31,958	32,563	33,305	33,028	32,795	31,670	31,685	32,458	33,435	34,389
Male	14,424	14,451	14,689	14,586	14,518	13,833	13,780	14,152	14,587	14,970
Female	17,534	18,112	18,616	18,442	18,277	17,837	17,905	18,306	18,848	19,419
Graduate	5,140	5,100	5,258	5,362	5,305	6,170	6,631	6,186	6,187	6,457
Male	2,140	2,138	2,181	2,120	2,094	2,308	2,448	2,354	2,354	2,398
Female	3,000	2,962	3,077	3,242	3,211	3,862	4,183	3,832	3,833	4,059
<b>UAB</b>	<b>18,333</b>	<b>19,535</b>	<b>20,902</b>	<b>21,923</b>	<b>22,080</b>	<b>22,563</b>	<b>22,289</b>	<b>21,639</b>	<b>21,160</b>	<b>20,905</b>
Undergraduate	11,511	12,369	13,134	13,836	13,836	13,878	13,547	13,032	12,382	11,959
Male	4,748	5,059	5,325	5,419	5,356	5,314	5,129	4,884	4,630	4,417
Female	6,763	7,310	7,809	8,417	8,480	8,564	8,418	8,148	7,752	7,542
Graduate	6,822	7,166	7,768	8,087	8,244	8,685	8,742	8,607	8,778	8,946
Male	2,437	2,531	2,783	2,944	2,862	2,929	2,982	3,019	3,173	3,444
Female	4,385	4,635	4,985	5,143	5,382	5,756	5,760	5,588	5,605	5,502
<b>UAH</b>	<b>7,866</b>	<b>8,468</b>	<b>9,101</b>	<b>9,736</b>	<b>9,988</b>	<b>10,000</b>	<b>9,636</b>	<b>9,237</b>	<b>8,743</b>	<b>8,564</b>
Undergraduate	6,013	6,507	7,090	7,671	7,989	8,027	7,569	7,169	6,851	6,800
Male	3,449	3,781	4,097	4,421	4,614	4,717	4,475	4,265	4,156	4,133
Female	2,564	2,726	2,993	3,250	3,375	3,310	3,094	2,904	2,695	2,667
Graduate	1,853	1,961	2,011	2,065	1,999	1,973	2,067	2,068	1,892	1,764
Male	1,015	1,052	1,023	1,000	959	935	1,010	1,068	1,022	955
Female	838	909	988	1,065	1,040	1,038	1,057	1,000	870	809
<b>Total</b>	<b>63,297</b>	<b>65,666</b>	<b>68,566</b>	<b>70,049</b>	<b>70,168</b>	<b>70,403</b>	<b>70,241</b>	<b>69,520</b>	<b>69,525</b>	<b>70,315</b>

Data Source (years prior to 2024): Integrated Postsecondary Education Data System (IPEDS). Data Source (2024) : campus preliminary reports.



2023-24  
Degrees and Certificates

18,080



## Degrees and Certificates Awarded

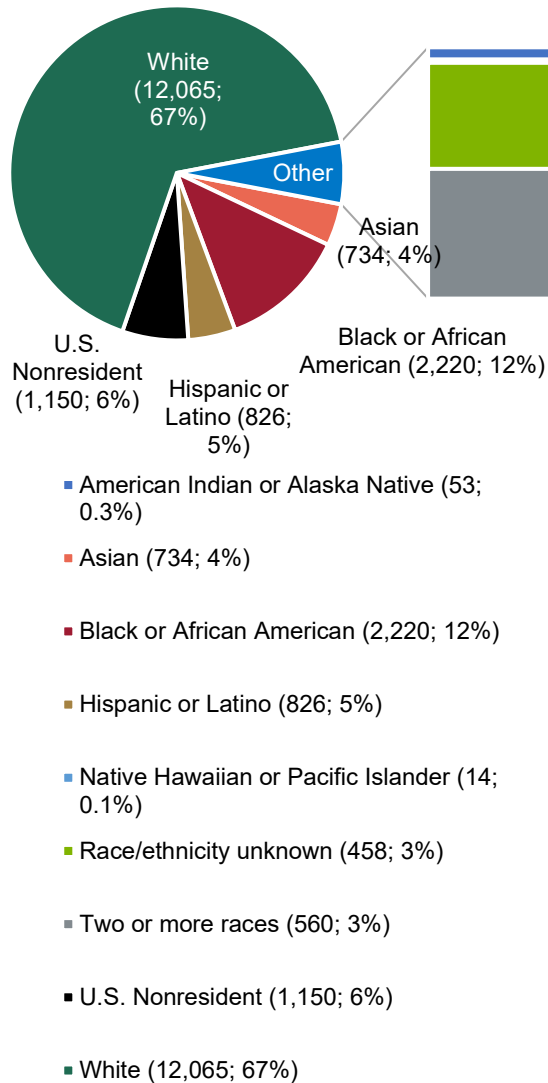
	14-15	15-16	16-17	17-18	18-19	19-20	20-21	21-22	22-23	23-24
<b>UA</b>	<b>7,905</b>	<b>8,491</b>	<b>8,564</b>	<b>8,881</b>	<b>9,098</b>	<b>9,668</b>	<b>9,612</b>	<b>9,433</b>	<b>9,231</b>	<b>9,181</b>
Bachelor's	5,662	6,354	6,501	6,750	6,912	7,429	7,363	6,740	6,505	6,605
Master's	1,672	1,650	1,578	1,681	1,750	1,831	1,859	2,180	2,162	1,992
Doctor's - res./sch.	264	240	245	232	229	193	203	215	245	235
Doctor's - prof.	259	209	192	196	187	190	161	181	191	218
Undergraduate cert.								6	5	5
Graduate certificate	48	38	48	22	20	25	26	111	123	126
<b>UAB</b>	<b>4,500</b>	<b>4,430</b>	<b>4,921</b>	<b>5,225</b>	<b>5,596</b>	<b>5,911</b>	<b>6,256</b>	<b>6,318</b>	<b>6,697</b>	<b>6,719</b>
Bachelor's	2,165	2,205	2,384	2,463	2,553	2,680	2,898	2,785	2,937	2,945
Master's	1,680	1,618	1,803	1,986	2,207	2,332	2,433	2,512	2,678	2,488
Doctor's - res./sch.	170	149	126	161	146	151	149	166	163	166
Doctor's - prof.	392	360	387	380	412	461	460	504	529	625
Doctor's - other	6	10	6	8	7	6				
Undergraduate cert.	18	15	43	47	76	74	71	80	91	124
Graduate certificate	69	73	172	180	195	207	245	271	299	371
<b>UAH</b>	<b>1,603</b>	<b>1,655</b>	<b>1,700</b>	<b>1,911</b>	<b>1,972</b>	<b>2,270</b>	<b>2,284</b>	<b>2,310</b>	<b>2,339</b>	<b>2,180</b>
Bachelor's degree	1,106	1,062	1,055	1,230	1,320	1,470	1,635	1,624	1,624	1,470
Master's degree	424	484	539	564	528	647	516	570	612	602
Doctor's - res./sch.	33	34	41	25	38	50	40	41	36	45
Doctor's - prof.	13	17	18	25	34	41	37	19	27	28
Undergraduate cert.	4		4	8	12	15	13	21	9	7
Graduate certificate	23	58	43	59	40	47	43	35	31	28
<b>UAS Total</b>	<b>14,008</b>	<b>14,576</b>	<b>15,185</b>	<b>16,017</b>	<b>16,666</b>	<b>17,849</b>	<b>18,152</b>	<b>18,061</b>	<b>18,267</b>	<b>18,080</b>

Data Source (years prior to 2023-24): Integrated Postsecondary Education Data System (IPEDS). Data Source (2023-24): campus preliminary reports.



2023-24 Degrees and Certificates  
Conferred to African American Students

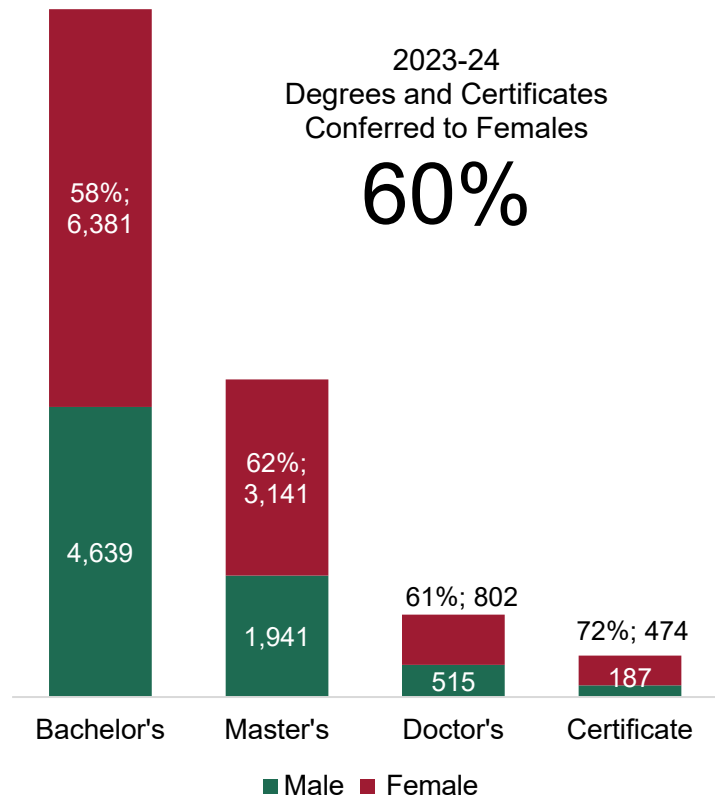
12%



Degrees and Certificates by Race/Ethnicity

	14-15	15-16	16-17	17-18	18-19	19-20	20-21	21-22	22-23	23-24
<b>UA</b>	<b>7,905</b>	<b>8,491</b>	<b>8,564</b>	<b>8,881</b>	<b>9,098</b>	<b>9,668</b>	<b>9,612</b>	<b>9,433</b>	<b>9,231</b>	<b>9,181</b>
American Indian or Alaska Native	37	30	37	24	34	36	26	30	37	20
Asian	74	107	124	102	122	116	111	128	138	160
Black or African American	882	869	841	889	935	946	863	890	878	891
Hispanic or Latino	194	269	265	333	355	470	452	433	411	435
Native Hawaiian or Pacific Islander	4	12	4	9	5	16	9	9	3	9
Race/ethnicity unknown	36	36	25	45	42	61	61	64	62	67
Two or more races	130	163	185	221	234	255	319	288	280	251
U.S. Nonresident	310	358	400	319	301	324	290	329	315	271
White	6,238	6,647	6,683	6,939	7,070	7,444	7,481	7,262	7,107	7,077
<b>UAB</b>	<b>4,500</b>	<b>4,430</b>	<b>4,921</b>	<b>5,225</b>	<b>5,596</b>	<b>5,911</b>	<b>6,256</b>	<b>6,318</b>	<b>6,697</b>	<b>6,719</b>
American Indian or Alaska Native	44	14	10	15	15	12	16	11	12	10
Asian	208	215	280	302	316	364	400	424	453	482
Black or African American	805	777	896	918	1,018	1,063	1,200	1,179	1,277	1,145
Hispanic or Latino	118	128	159	166	216	213	222	217	279	285
Native Hawaiian or Other Pacific Island	4	5	5	4	4	3		2	3	1
Race/ethnicity unknown	45	44	51	65	88	80	100	122	198	319
Two or more races	74	128	154	150	176	174	215	208	190	232
U.S. Nonresident	164	168	213	254	288	333	365	316	496	725
White	3,038	2,951	3,153	3,351	3,475	3,669	3,738	3,839	3,789	3,520
<b>UAH</b>	<b>1,603</b>	<b>1,655</b>	<b>1,700</b>	<b>1,911</b>	<b>1,972</b>	<b>2,270</b>	<b>2,284</b>	<b>2,310</b>	<b>2,339</b>	<b>2,180</b>
American Indian or Alaska Native	17	18	31	25	18	30	24	10	18	23
Asian	62	53	70	92	72	85	96	87	92	92
Black or African American	137	173	169	173	182	170	185	203	173	184
Hispanic or Latino	29	41	40	37	50	93	88	91	106	106
Native Hawaiian or Other Pacific Islander		1	1		2	2	2	3	3	4
Race/ethnicity unknown	59	56	47	85	163	92	65	119	115	72
Two or more races	16	37	19	28	31	38	38	51	75	77
U.S. Nonresident	130	139	171	148	146	134	98	94	113	154
White	1,153	1,137	1,152	1,323	1,308	1,626	1,688	1,652	1,644	1,468
<b>UAS Total</b>	<b>14,008</b>	<b>14,576</b>	<b>15,185</b>	<b>16,017</b>	<b>16,666</b>	<b>17,849</b>	<b>18,152</b>	<b>18,061</b>	<b>18,267</b>	<b>18,080</b>

Data Source (years prior to 2023-24): Integrated Postsecondary Education Data System (IPEDS). Data Source (2023-24): campus preliminary reports.



## Degrees and Certificates by Sex

	14-15	15-16	16-17	17-18	18-19	19-20	20-21	21-22	22-23	23-24
<b>UA</b>	<b>7,905</b>	<b>8,491</b>	<b>8,564</b>	<b>8,881</b>	<b>9,098</b>	<b>9,668</b>	<b>9,612</b>	<b>9,433</b>	<b>9,231</b>	<b>9,181</b>
<b>Bachelor's</b>	<b>5,662</b>	<b>6,354</b>	<b>6,501</b>	<b>6,750</b>	<b>6,912</b>	<b>7,429</b>	<b>7,363</b>	<b>6,740</b>	<b>6,505</b>	<b>6,605</b>
Male	2,427	2,777	2,836	2,877	2,917	3,178	3,058	2,850	2,672	2,724
Female	3,235	3,577	3,665	3,873	3,995	4,251	4,305	3,890	3,833	3,881
<b>Master's</b>	<b>1,672</b>	<b>1,650</b>	<b>1,578</b>	<b>1,681</b>	<b>1,750</b>	<b>1,831</b>	<b>1,859</b>	<b>2,180</b>	<b>2,162</b>	<b>1,992</b>
Male	630	654	623	688	642	681	694	759	805	700
Female	1,042	996	955	993	1,108	1,150	1,165	1,421	1,357	1,292
<b>Doctor's</b>	<b>523</b>	<b>449</b>	<b>437</b>	<b>428</b>	<b>416</b>	<b>383</b>	<b>364</b>	<b>396</b>	<b>436</b>	<b>453</b>
Male	227	211	194	201	197	189	175	176	193	201
Female	296	238	243	227	219	194	189	220	243	252
<b>Certificate</b>	<b>48</b>	<b>38</b>	<b>48</b>	<b>22</b>	<b>20</b>	<b>25</b>	<b>26</b>	<b>117</b>	<b>128</b>	<b>131</b>
Male	10	5	18	6	6	7	5	22	24	24
Female	38	33	30	16	14	18	21	95	104	107
<b>UAB</b>	<b>4,500</b>	<b>4,430</b>	<b>4,921</b>	<b>5,225</b>	<b>5,596</b>	<b>5,911</b>	<b>6,256</b>	<b>6,318</b>	<b>6,697</b>	<b>6,719</b>
<b>Bachelor's</b>	<b>2,165</b>	<b>2,205</b>	<b>2,384</b>	<b>2,463</b>	<b>2,553</b>	<b>2,680</b>	<b>2,898</b>	<b>2,785</b>	<b>2,937</b>	<b>2,945</b>
Male	823	873	942	986	1,006	974	1,053	1,003	1,087	1,093
Female	1,342	1,332	1,442	1,477	1,547	1,706	1,845	1,782	1,850	1,852
<b>Master's</b>	<b>1,680</b>	<b>1,618</b>	<b>1,803</b>	<b>1,986</b>	<b>2,207</b>	<b>2,332</b>	<b>2,433</b>	<b>2,512</b>	<b>2,678</b>	<b>2,488</b>
Male	530	530	590	650	757	788	794	772	939	935
Female	1,150	1,088	1,213	1,336	1,450	1,544	1,639	1,740	1,739	1,553
<b>Doctor's</b>	<b>568</b>	<b>519</b>	<b>519</b>	<b>549</b>	<b>565</b>	<b>618</b>	<b>609</b>	<b>670</b>	<b>692</b>	<b>791</b>
Male	267	267	235	229	232	253	251	276	257	274
Female	301	252	284	320	333	365	358	394	435	517
<b>Certificate</b>	<b>87</b>	<b>88</b>	<b>215</b>	<b>227</b>	<b>271</b>	<b>281</b>	<b>316</b>	<b>351</b>	<b>390</b>	<b>495</b>
Male	13	21	53	67	101	71	72	88	110	148
Female	74	67	162	160	170	210	244	263	280	347
<b>UAH</b>	<b>1,603</b>	<b>1,655</b>	<b>1,700</b>	<b>1,911</b>	<b>1,972</b>	<b>2,270</b>	<b>2,284</b>	<b>2,310</b>	<b>2,339</b>	<b>2,180</b>
<b>Bachelor's</b>	<b>1,106</b>	<b>1,062</b>	<b>1,055</b>	<b>1,230</b>	<b>1,320</b>	<b>1,470</b>	<b>1,635</b>	<b>1,624</b>	<b>1,624</b>	<b>1,470</b>
Male	583	567	587	647	710	746	900	907	910	822
Female	523	495	468	583	610	724	735	717	714	648
<b>Master's</b>	<b>424</b>	<b>484</b>	<b>539</b>	<b>564</b>	<b>528</b>	<b>647</b>	<b>516</b>	<b>570</b>	<b>612</b>	<b>602</b>
Male	234	255	284	291	253	312	224	244	282	306
Female	190	229	255	273	275	335	292	326	330	296
<b>Doctor's</b>	<b>46</b>	<b>51</b>	<b>59</b>	<b>50</b>	<b>72</b>	<b>91</b>	<b>77</b>	<b>60</b>	<b>63</b>	<b>73</b>
Male	27	25	31	20	28	40	33	36	18	40
Female	19	26	28	30	44	51	44	24	45	33
<b>Certificate</b>	<b>27</b>	<b>58</b>	<b>47</b>	<b>67</b>	<b>52</b>	<b>62</b>	<b>56</b>	<b>56</b>	<b>40</b>	<b>35</b>
Male	10	18	21	14	21	23	23	20	8	15
Female	17	40	26	53	31	39	33	36	32	20
<b>Total</b>	<b>14,008</b>	<b>14,576</b>	<b>15,185</b>	<b>16,017</b>	<b>16,666</b>	<b>17,849</b>	<b>18,152</b>	<b>18,061</b>	<b>18,267</b>	<b>18,080</b>

Data Source (years prior to 2023-24): Integrated Postsecondary Education Data System (IPEDS). Data Source (2023-24): campus preliminary reports.

2023-24  
Bachelor's Degrees  
**UA:**  
**6,605**  
Top 10  
Program Areas

52 Business, management, marketing, and related support services (1,924; 29%)	14 Engineering (662; 10%)	51 Health professions and related programs (608; 9%)	19 Family and consumer sciences/human sciences (41...	42 Psychology (342; 5%)		Other (759; 11%)
	09 Communication, journalism, and related programs (628; 10%)	45 Social sciences (595; 9%)	31 Parks, recreati... leisure, fitness,...	26 Biological and biomed... sciences...	13 Edu... (165; 2%)	

**Bachelor's Degrees by 2-Digit CIP Code by Race: UA**

	American Indian	Asian	African American	Hispanic	Pacific Islander	Unknown	Two or more races	White	U.S. Nonresident	Total
52 Business, management, marketing, and related support services	4	20	113	100		9	56	1,615	7	<b>1,924</b>
14 Engineering	1	20	30	24	1	4	17	521	44	<b>662</b>
09 Communication, journalism, and related programs	1	4	59	49		3	23	488	1	<b>628</b>
51 Health professions and related programs	5	8	88	17		2	15	471	2	<b>608</b>
45 Social sciences	1	12	57	45	2	5	17	454	2	<b>595</b>
19 Family and consumer sciences/human sciences	2	4	71	20	1	4	17	292	4	<b>415</b>
42 Psychology		8	34	16		3	21	260		<b>342</b>
31 Parks, recreation, leisure, fitness, and kinesiology	1	3	43	10		1	4	195	2	<b>259</b>
26 Biological and biomedical sciences	1	9	11	10			7	210		<b>248</b>
13 Education			11	9		1	1	143		<b>165</b>
50 Visual and performing arts		5	13	13		1	8	118	1	<b>159</b>
11 Computer and information sciences and support services		13	8	2			3	80	2	<b>108</b>
30 Multi/interdisciplinary studies			13	3		1		68	1	<b>86</b>
44 Public administration and social service professions			14	5			3	44		<b>66</b>
54 History		1	3	3			1	58		<b>66</b>
23 English language and literature/letters		1	6	1	1	1	2	53		<b>65</b>
40 Physical sciences		2	4	4			2	53		<b>65</b>
27 Mathematics and statistics		1	5	1				45	1	<b>53</b>
03 Natural resources and conservation		1	1	4			2	37		<b>45</b>
16 Foreign languages, literatures, and linguistics		2	1				1	18		<b>22</b>
38 Philosophy and religious studies		2	1	1				10		<b>14</b>
05 Area, ethnic, cultural, gender, and group studies			7					2		<b>9</b>
24 Liberal Arts and Sciences			1							<b>1</b>

Source: Integrated Postsecondary Education Data System (IPEDS)

UAS Data Summary, November 2024



2023-24  
Bachelor's Degrees  
**UAB:**  
**2,945**  
Top 10  
Program Areas

51 Health professions and related programs (603; 20%)	52 Business, management, marketing, and related support services (543; 18%)	26 Biological and biomedical sciences (457; 16%)	42 Psychology (234; 8%)	13 Education (166; 6%)	14 Engineering (166; 6%)	11 Comp... and inform... sciences and...	24 Liberal arts and sciences, general...	50 Vis... and performing arts...	43 Homela... security, law enforce...	Other (381; 13%)
---	---	--	-------------------------	------------------------	--------------------------	--	--	----------------------------------	---------------------------------------	------------------

**Bachelor's Degrees by 2-Digit CIP Code by Race: UAB**

	American Indian	Asian	African American	Hispanic	Pacific Islander	Unknown	Two or more races	White	U.S. Nonresident	Total
51 Health professions and related programs		29	159	31	1	1	36	333	13	<b>603</b>
52 Business, management, marketing, and related support services		33	86	37		5	18	339	25	<b>543</b>
26 Biological and biomedical sciences	2	105	68	48		4	35	180	15	<b>457</b>
42 Psychology		17	68	6			13	128	2	<b>234</b>
13 Education		6	36	11		2	7	102	2	<b>166</b>
14 Engineering	1	22	24	6			8	94	11	<b>166</b>
43 Homeland security, law enforcement, firefighting, and related protective services		4	34	7			3	60	2	<b>110</b>
11 Computer and information sciences and support services	1	13	21	3		1	4	52	13	<b>108</b>
24 Liberal arts and sciences, general studies, and humanities		2	35	3		1	10	40	2	<b>93</b>
50 Visual and performing arts		2	10	9		1	2	60		<b>84</b>
45 Social sciences		5	22	6			5	43		<b>81</b>
09 Communication, journalism, and related programs		3	22	3				29	1	<b>58</b>
40 Physical sciences		11	8	1		1	2	29	2	<b>54</b>
44 Public administration and social service professions		1	15	7			1	26		<b>50</b>
23 English language and literature/letters			9	2			1	34		<b>46</b>
54 History		1	3	2			2	25		<b>33</b>
16 Foreign languages, literatures, and linguistics		2	2	6				8		<b>18</b>
27 Mathematics and statistics	1		1	1		1		13		<b>17</b>
30 Multi/interdisciplinary studies		1						10		<b>11</b>
38 Philosophy and religious studies			1				3	7		<b>11</b>
05 Area, ethnic, cultural, gender, and group studies			2							<b>2</b>

Source: Integrated Postsecondary Education Data System (IPEDS)

2023-24  
Bachelor's Degrees  
**UAH:**  
**1,470**  
**Top 10**  
**Program Areas**

14 Engineering (466; 32%)	52 Business, management, marketing, and related support services (262; 18%)	51 Health professions and related programs (154; 10%)	11 Computer and information sciences and support services (111; 8%)	40 Physical sciences (63; 4%)	50 Visual and perform... arts (61; 4%)	Other (152; 10%)
			26 Biological and biomedical sciences (91; 6%)	31 Parks, recre... leisure, fitne...	42 Psychology...	
				13 Education (33; 2%)		

**Bachelor's Degrees by 2-Digit CIP Code by Race: UAH**

	American Indian	Asian	African American	Hispanic	Pacific Islander	Unknown	Two or more races	White	U.S. Nonresident	Total
14 Engineering	3	24	12	22	1	8	14	373	9	<b>466</b>
52 Business, management, marketing, and related support services	5	7	28	14		15	11	177	5	<b>262</b>
51 Health professions and related programs	2	8	22	6	1	6	6	101	2	<b>154</b>
11 Computer and information sciences and support services		10	13	8		3	4	70	3	<b>111</b>
26 Biological and biomedical sciences	4	7	7	4	1	2	3	60	3	<b>91</b>
40 Physical sciences	1	2	2	2			3	53		<b>63</b>
50 Visual and performing arts		3	9	3		2	6	38		<b>61</b>
31 Parks, recreation, leisure, fitness, and kinesiology			4	3	1		3	29		<b>40</b>
42 Psychology			3	1			1	32		<b>37</b>
13 Education	1		1	1			5	25		<b>33</b>
23 English language and literature/letters	1		6	1			1	24		<b>33</b>
27 Mathematics and statistics				1			2	19	1	<b>23</b>
30 Multi/interdisciplinary studies			8			1		14		<b>23</b>
15 Engineering-related technologies/technicians	1	2	3	3			1	8		<b>18</b>
45 Social sciences	2		2	2		2	2	7		<b>17</b>
09 Communication, journalism, and related programs			4	2		1		8		<b>15</b>
54 History	1			2			1	11		<b>15</b>
16 Foreign languages, literatures, and linguistics								4		<b>4</b>
19 Family and consumer sciences/human sciences			2					1		<b>3</b>
38 Philosophy and religious studies								1		<b>1</b>

Source: Integrated Postsecondary Education Data System (IPEDS)

2023-24  
Bachelor's Degrees  
**UAS:**  
**11,020**  
**Top 10**  
**Program Areas**

52 Business, management, marketing, and related support services (2,729; 25%)	51 Health professions and related programs (1,365; 12%)	14 Engineering (1,294; 12%)	26 Biological and biomedical sciences (796; 7%)	45 Social sciences (693; 6%)	42 Psychology (613; 6%)	Other (1,720; 16%)
			09 Communication, journalism, and related...	19 Family and consumer sciences/human...	13 Educat... (364; 3%)	11 Comp... and infor... scienc...

**Bachelor's Degrees by 2-Digit CIP Code by Race: UAS**

	American Indian	Asian	African American	Hispanic	Pacific Islander	Unknown	Two or more races	White	U.S. Nonresident	Total
52 Business, management, marketing, and related support services	9	60	227	151		29	85	2,131	37	<b>2,729</b>
51 Health professions and related programs	7	45	269	54	2	9	57	905	17	<b>1,365</b>
14 Engineering	5	66	66	52	2	12	39	988	64	<b>1,294</b>
26 Biological and biomedical sciences	7	121	86	62	1	6	45	450	18	<b>796</b>
09 Communication, journalism, and related programs	1	7	85	54		4	23	525	2	<b>701</b>
45 Social sciences	3	17	81	53	2	7	24	504	2	<b>693</b>
42 Psychology		25	105	23		3	35	420	2	<b>613</b>
19 Family and consumer sciences/human sciences	2	4	73	20	1	4	17	293	4	<b>418</b>
13 Education	1	6	48	21		3	13	270	2	<b>364</b>
11 Computer and information sciences and support services	1	36	42	13		4	11	202	18	<b>327</b>
50 Visual and performing arts		10	32	25		4	16	216	1	<b>304</b>
31 Parks, recreation, leisure, fitness, and kinesiology	1	3	47	13	1	1	7	224	2	<b>299</b>
40 Physical sciences	1	15	14	7		1	7	135	2	<b>182</b>
23 English language and literature/letters	1	1	21	4	1	1	4	111		<b>144</b>
30 Multi/interdisciplinary studies		1	21	3		2		92	1	<b>120</b>
44 Public administration and social service professions		1	29	12			4	70		<b>116</b>
54 History	1	2	6	7			4	94		<b>114</b>
43 Homeland security, law enforcement, firefighting and related protective services		4	34	7			3	60	2	<b>110</b>
24 Liberal arts and sciences, general studies and humanities		2	36	3		1	10	40	2	<b>94</b>
27 Mathematics and statistics	1	1	6	3		1	2	77	2	<b>93</b>
03 Natural resources and conservation		1	1	4			2	37		<b>45</b>
16 Foreign languages, literatures, and linguistics		4	3	6			1	30		<b>44</b>
38 Philosophy and religious studies		2	2	1			3	18		<b>26</b>
15 Engineering-related technologies/technicians	1	2	3	3			1	8		<b>18</b>
05 Area, ethnic, cultural, gender, and group studies			9					2		<b>11</b>

Source: Integrated Postsecondary Education Data System (IPEDS)



2023-24  
Master's Degrees  
**UA:**  
**1,992**  
**Top 10**  
**Program Areas**

52 Business, management, marketing, and related support services (542; 27%)	51 Health professions and related programs (229; 11%)	19 Family and consumer sciences/human sciences (185; 9%)	13 Education (161; 8%)	14 Engineering and related programs (122; 6%)	25 Library science (120; 6%)	Other (236; 12%)
		44 Public administration and social service professions (177; 9%)	09 Communication, journalism, and related programs (132; 7%)			
				45 Social sciences...	42 Psychology...	

**Master's Degrees by 2-Digit CIP Code by Race: UA**

	American Indian	Asian	African American	Hispanic	Pacific Islander	Unknown	Two or more races	White	U.S. Nonresident	Total
52 Business, management, marketing, and related support services		8	33	12	1	3	10	461	14	<b>542</b>
51 Health professions and related programs	1	3	48	13		6	1	156	1	<b>229</b>
19 Family and consumer sciences/human sciences	1	6	21	11		2	4	139	1	<b>185</b>
44 Public administration and social service professions		2	48	10		2	2	110	3	<b>177</b>
13 Education			21	3			4	116	17	<b>161</b>
09 Communication, journalism, and related programs		1	18	8	1	1	2	96	5	<b>132</b>
14 Engineering		5	1	5		4	2	77	28	<b>122</b>
25 Library science	1	2	12	4		2	1	98		<b>120</b>
45 Social sciences		1	3	2			1	38	1	<b>46</b>
42 Psychology		5	2	3			1	27	4	<b>42</b>
50 Visual and performing arts			6	1		1		25	1	<b>34</b>
40 Physical sciences			1	1		1		15	13	<b>31</b>
27 Mathematics and statistics			1					16	7	<b>24</b>
11 Computer and information sciences and support services							1	16	6	<b>23</b>
23 English language and literature/letters			2	1				14	5	<b>22</b>
22 Legal professions and studies		1	3	3			2	12		<b>21</b>
05 Area, ethnic, cultural, gender, and group studies			6					8	3	<b>17</b>
31 Parks, recreation, leisure, fitness, and kinesiology								14		<b>14</b>
16 Foreign languages, literatures, and linguistics				1				1	11	<b>13</b>
26 Biological and biomedical sciences							1	11	1	<b>13</b>
30 Multi/interdisciplinary studies				1				8	4	<b>13</b>
54 History						1	1	6		<b>8</b>
38 Philosophy and religious studies				1				2		<b>3</b>

Source: Integrated Postsecondary Education Data System (IPEDS)

2023-24  
Master's Degrees  
**UAB:**  
**2,488**  
**Top 10**  
**Program Areas**

51 Health professions and related programs (1,028; 41%)	52 Business, management, marketing, and related support services (389; 16%)	11 Computer and information sciences and support services (377; 15%)	14 Engineering (183; 7%)	26 Biological and biomedical sciences (182; 7%)	
			13 Education (163; 7%)	30 Mu... 44...	45 Soci... 43...

**Master's Degrees by 2-Digit CIP Code by Race: UAB**

	American Indian	Asian	African American	Hispanic	Pacific Islander	Unknown	Two or more races	White	U.S. Nonresident	Total
51 Health professions and related programs	2	52	144	21		97	18	640	54	<b>1,028</b>
52 Business, management, marketing, and related support services		31	67	11		65	11	181	23	<b>389</b>
11 Computer and information sciences and support services		5	2	1		2	1	9	357	<b>377</b>
14 Engineering		7	9	6		31		52	78	<b>183</b>
26 Biological and biomedical sciences		23	36	10		2	9	71	31	<b>182</b>
13 Education	1		28	4		24	4	98	4	<b>163</b>
30 Multi/interdisciplinary studies			7			2		20	1	<b>30</b>
45 Social sciences		1	7			2	2	15	1	<b>28</b>
44 Public administration and social service professions		1	8	1		3		8	4	<b>25</b>
43 Homeland security, law enforcement, firefighting, and related protective services		1	5				4	9		<b>19</b>
42 Psychology		1	5	1				7	1	<b>15</b>
09 Communication, journalism, and related programs			4					9	1	<b>14</b>
23 English language and literature/letters		1	1					7		<b>9</b>
40 Physical sciences			1					1	7	<b>9</b>
27 Mathematics and statistics								1	7	<b>8</b>
54 History								6		<b>6</b>
50 Visual and performing arts								3		<b>3</b>

Source: Integrated Postsecondary Education Data System (IPEDS)

2023-24  
Master's Degrees  
**UAH:**  
**602**  
**Top 10**  
**Program Areas**

52 Business, management, marketing, and related support services (155; 26%)	14 Engineering (139; 23%)	51 Health professions and related programs (111; 18%)	11 Computer and information sciences and support services (91; 15%)	42 Psycho... (22; 4%)	40 Physical sciences (21; 3%)
				13 Edu... (18; 3%)	23 Engli... and litera... 09...
					26 Biol... and bio... scie... 2...

**Master's Degrees by 2-Digit CIP Code by Race: UAH**

	American Indian	Asian	African American	Hispanic	Pacific Islander	Unknown	Two or more races	White	U.S. Nonresident	Total
52 Business, management, marketing, and related support services		8	8	4		3	4	76	52	<b>155</b>
14 Engineering	1	8	5	5		13	2	91	14	<b>139</b>
51 Health professions and related programs	1	3	16	8		2	1	79	1	<b>111</b>
11 Computer and information sciences and support services		5	4	5		1	2	32	42	<b>91</b>
42 Psychology				2			1	18	1	<b>22</b>
40 Physical sciences			1					14	6	<b>21</b>
13 Education			1	1		1		15		<b>18</b>
23 English language and literature/letters			4	1		1	1	6		<b>13</b>
26 Biological and biomedical sciences			2				1	7	2	<b>12</b>
09 Communication, journalism, and related programs			2			1		5		<b>8</b>
54 History				1				5		<b>6</b>
27 Mathematics and statistics								3		<b>3</b>
44 Public administration and social service professions			2							<b>2</b>
30 Multi/interdisciplinary studies								1		<b>1</b>

Source: Integrated Postsecondary Education Data System (IPEDS)



2023-24  
Master's Degrees  
**UAS:**  
**5,082**  
**Top 10**  
**Program Areas**

51 Health professions and related programs (1,368; 27%)	52 Business, management, marketing, and related support services (1,086; 21%)	11 Computer and information sciences and support services (491; 10%)	13 Education (342; 7%)		26 Biological and biomedical sciences (207; 4%)	Other (481; 9%)
		14 Engineering (444; 9%)	44 Public administration and social service professions (204; 4%)	19 Family and consumer sciences/human sciences (185; 4%)	09 Communication, journalism, and related programs (154; 3%)	
					25 Library science (120; 2%)	

**Master's Degrees by 2-Digit CIP Code by Race: UAS**

	American Indian	Asian	African American	Hispanic	Pacific Islander	Unknown	Two or more races	White	U.S. Non-resident	Total
51 Health professions and related programs	4	58	208	42		105	20	875	56	<b>1,368</b>
52 Business, management, marketing, and related support services		47	108	27	1	71	25	718	89	<b>1,086</b>
11 Computer and information sciences and support services		10	6	6		3	4	57	405	<b>491</b>
14 Engineering	1	20	15	16		48	4	220	120	<b>444</b>
13 Education	1		50	8		25	8	229	21	<b>342</b>
26 Biological and biomedical sciences		23	38	10		2	11	89	34	<b>207</b>
44 Public administration and social service professions		3	58	11		5	2	118	7	<b>204</b>
19 Family and consumer sciences/human sciences	1	6	21	11		2	4	139	1	<b>185</b>
09 Communication, journalism, and related programs		1	24	8	1	2	2	110	6	<b>154</b>
25 Library science	1	2	12	4		2	1	98		<b>120</b>
42 Psychology		6	7	6			2	52	6	<b>79</b>
45 Social sciences		2	10	2		2	3	53	2	<b>74</b>
40 Physical sciences			3	1		1		30	26	<b>61</b>
23 English language and literature/letters		1	7	2		1	1	27	5	<b>44</b>
30 Multi/interdisciplinary studies			7	1		2		29	5	<b>44</b>
50 Visual and performing arts			6	1		1		28	1	<b>37</b>
27 Mathematics and statistics			1					20	14	<b>35</b>
22 Legal professions and studies		1	3	3			2	12		<b>21</b>
54 History				1		1	1	17		<b>20</b>
43 Homeland security, law enforcement, firefighting, and related protective services		1	5				4	9		<b>19</b>
05 Area, ethnic, cultural, gender, and group studies			6					8	3	<b>17</b>
31 Parks, recreation, leisure, fitness, and kinesiology								14		<b>14</b>
16 Foreign languages, literatures, and linguistics				1				1	11	<b>13</b>
38 Philosophy and religious studies				1				2		<b>3</b>

Source: Integrated Postsecondary Education Data System (IPEDS)

2023-24  
Doctor's Degrees  
**UA:**  
**453**  
Top 10  
Program Areas

22 Legal professions and studies (153; 34%)	13 Education (56; 12%)	51 Health professions and related programs (53; 12%)	14 Engineering (43; 9%)	42 Psychology (21; 5%)	44 Public administration and social service professions (21; 5%)	Other (43; 9%)
			40 Physical sciences (32; 7%)	50 Visual and performing arts (11; 2%)	31 Parks, recreation, and leisure services (10; 2%)	
					09 Communication, journalism, and related programs (5; 1%)	

**Doctor's Degrees by 2-Digit CIP Code by Race: UA**

	American Indian	Asian	African American	Hispanic	Pacific Islander	Unknown	Two or more races	White	U.S. Nonresident	Total
22 Legal professions and studies		3	18	5	1	3	4	119		<b>153</b>
13 Education	1	1	12	2			3	35	2	<b>56</b>
51 Health professions and related programs		1	9	3	1		2	37		<b>53</b>
14 Engineering		3		1			1	13	25	<b>43</b>
40 Physical sciences								13	19	<b>32</b>
42 Psychology			3	1		1		16		<b>21</b>
44 Public administration and social service professions		1	6			2		9	1	<b>19</b>
50 Visual and performing arts								10	4	<b>14</b>
31 Parks, recreation, leisure, fitness, and kinesiology			2				2	5	1	<b>10</b>
09 Communication, journalism, and related programs			1	1			1	5	1	<b>9</b>
52 Business, management, marketing, and related support services								3	6	<b>9</b>
26 Biological and biomedical sciences								7	1	<b>8</b>
27 Mathematics and statistics							1	4	2	<b>7</b>
45 Social sciences								4	2	<b>6</b>
11 Computer and information sciences and support services								1	2	<b>3</b>
23 English language and literature/letters								3		<b>3</b>
30 Multi/interdisciplinary studies								2	1	<b>3</b>
19 Family and consumer sciences/human sciences								1	1	<b>2</b>
54 History								2		<b>2</b>

Source: Integrated Postsecondary Education Data System (IPEDS)

2023-24  
Doctor's Degrees  
**UAB:**  
**791**  
**Top 5**  
**Program Areas**

51 Health professions and related programs (652; 82%)	26 Biological and biomedical sciences (77; 10%)			...
	14 Engi... (14; 2%)	40 Phy... scie... (12; ...)	42 Psy... (12; 2%)	

**Doctor's Degrees by 2-Digit CIP Code by Race: UAB**

	American Indian	Asian	African American	Hispanic	Pacific Islander	Unknown	Two or more races	White	U.S. Nonresident	Total
51 Health professions and related programs	1	64	69	18		30	20	433	17	652
26 Biological and biomedical sciences		7	7	4			5	41	13	77
14 Engineering		1	2					5	6	14
40 Physical sciences		1	2			1		4	4	12
42 Psychology		1		2				9		12
11 Computer and information sciences and support services								1	4	5
30 Multi/interdisciplinary studies								5		5
31 Parks, recreation, leisure, fitness, and kinesiology			4					1		5
13 Education			1	1				1	1	4
27 Mathematics and statistics		1						2	1	4
45 Social sciences									1	1

Source: Integrated Postsecondary Education Data System (IPEDS)

2023-24  
Doctor's Degrees  
**UAH:**  
**73**

## Program Areas

51 Health professions and related programs (31; 42%)	14 Engineering (22; 30%)	40 Physical sciences (14; 19%)	11 Computer and informa... sciences...
			26 Biological and biomedi... sciences...

## Doctor's Degrees by 2-Digit CIP Code by Race: UAH

	American Indian	Asian	African American	Hispanic	Pacific Islander	Unknown	Two or more races	White	U.S. Nonresident	Total
51 Health professions and related programs			10			8		13		<b>31</b>
14 Engineering			1	2		1		10	8	<b>22</b>
40 Physical sciences								10	4	<b>14</b>
11 Computer and information sciences and support services								2	1	<b>3</b>
26 Biological and biomedical sciences				1				2		<b>3</b>

Source: Integrated Postsecondary Education Data System (IPEDS)



2023-24  
Doctor's Degrees  
**UAS:**  
**1,317**  
**Top 10**  
**Program Areas**

51 Health professions and related programs (736; 56%)	22 Legal professions and studies (153; 12%)	26 Biological and biomedical sciences (88; 7%)	13 Education (60; 5%)	40 Physical sciences (58; 4%)	Ot... (62; 5%)
		14 Engineering (79; 6%)	42 Psychology (33; 3%)	44 Public administration (31; 3%)	

**Doctor's Degrees by 2-Digit CIP Code by Race: UAS**

	American Indian	Asian	African American	Hispanic	Pacific Islander	Unknown	Two or more races	White	U.S. Nonresident	Total
51 Health professions and related programs	1	65	88	21	1	38	22	483	17	<b>736</b>
22 Legal professions and studies		3	18	5	1	3	4	119		<b>153</b>
26 Biological and biomedical sciences		7	7	5			5	50	14	<b>88</b>
14 Engineering		4	3	3		1	1	28	39	<b>79</b>
13 Education	1	1	13	3			3	36	3	<b>60</b>
40 Physical sciences		1	2			1		27	27	<b>58</b>
42 Psychology		1	3	3		1		25		<b>33</b>
44 Public administration and social service professions		1	6			2		9	1	<b>19</b>
31 Parks, recreation, leisure, fitness, and kinesiology			6				2	6	1	<b>15</b>
50 Visual and performing arts								10	4	<b>14</b>
11 Computer and information sciences and support services								4	7	<b>11</b>
27 Mathematics and statistics		1					1	6	3	<b>11</b>
09 Communication, journalism, and related programs			1	1			1	5	1	<b>9</b>
52 Business, management, marketing, and related support services								3	6	<b>9</b>
30 Multi/interdisciplinary studies								7	1	<b>8</b>
45 Social sciences								4	3	<b>7</b>
23 English language and literature/letters								3		<b>3</b>
19 Family and consumer sciences/human sciences								1	1	<b>2</b>
54 History								2		<b>2</b>

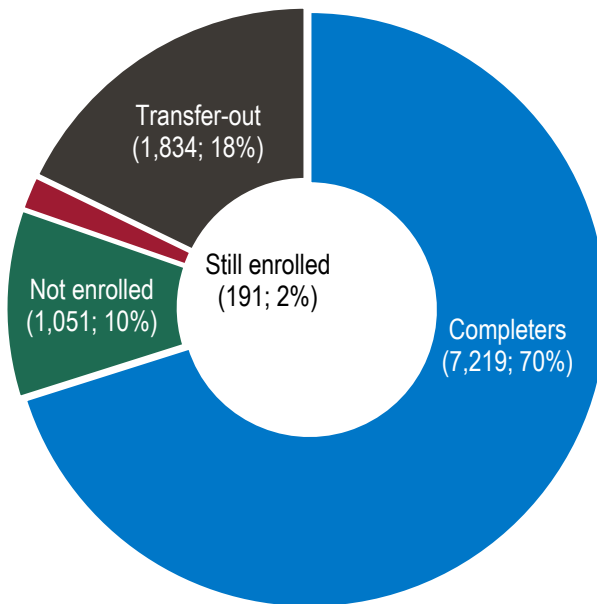
Source: Integrated Postsecondary Education Data System (IPEDS)



## Six-year Graduation Rates and Completion Status

Six-year graduation rate

70%

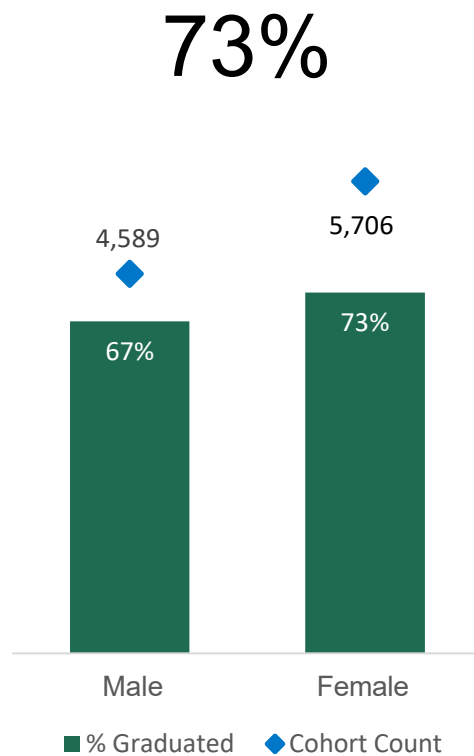


Reporting Year	2015	2016	2017	2018	2019	2020	2021	2022	2023	2024
Adjusted Cohort	2009	2010	2011	2012	2013	2014	2015	2016	2017	2018
<b>UA</b>	<b>5,062</b>	<b>5,443</b>	<b>5,665</b>	<b>6,302</b>	<b>6,385</b>	<b>6,791</b>	<b>7,169</b>	<b>7,532</b>	<b>7,380</b>	<b>6,628</b>
Completers	3,396	3,740	3,845	4,530	4,540	4,899	5,178	5,480	5,438	4,863
No longer enrolled	423	444	464	488	480	467	554	533	499	525
Still enrolled	122	114	131	101	98	89	88	104	111	89
Transfer-out	1,121	1,145	1,225	1,183	1,267	1,336	1,349	1,415	1,332	1,151
Graduation rate	67%	69%	68%	72%	71%	72%	72%	73%	74%	73%
<b>UAB</b>	<b>1,494</b>	<b>1,537</b>	<b>1,576</b>	<b>1,652</b>	<b>1,727</b>	<b>1,714</b>	<b>1,590</b>	<b>1,945</b>	<b>2,207</b>	<b>2,239</b>
Completers	816	816	834	963	1,095	1,050	993	1,253	1,371	1,438
No longer enrolled	251	268	28	254	245	260	262	324	383	345
Still enrolled	65	79	278	66	52	58	51	71	62	51
Transfer-out	362	374	436	369	335	347	284	297	391	405
Graduation rate	55%	53%	53%	58%	63%	61%	62%	64%	62%	64%
<b>UAH</b>	<b>774</b>	<b>600</b>	<b>652</b>	<b>615</b>	<b>638</b>	<b>714</b>	<b>1,026</b>	<b>1,193</b>	<b>1,339</b>	<b>1,428</b>
Completers	382	292	317	319	368	408	623	751	829	918
No longer enrolled	97	100	112	74	83	109	122	152	198	181
Still enrolled	49	29	37	40	25	42	34	41	41	51
Transfer-out	246	179	186	182	162	155	247	249	271	278
Graduation rate	49%	49%	49%	52%	58%	57%	61%	63%	62%	64%
<b>UAS</b>	<b>7,330</b>	<b>7,580</b>	<b>7,893</b>	<b>8,569</b>	<b>8,750</b>	<b>9,219</b>	<b>9,785</b>	<b>10,656</b>	<b>10,926</b>	<b>10,295</b>
Completers	4,594	4,848	4,996	5,812	6,003	6,355	6,792	7,468	7,638	7,219
No longer enrolled	771	812	604	816	808	837	940	1,026	1,080	1,051
Still enrolled	236	222	446	207	175	189	173	217	214	191
Transfer-out	1,729	1,698	1,847	1,734	1,764	1,838	1,880	1,945	1,994	1,834
Graduation rate	63%	64%	63%	68%	69%	69%	69%	70%	70%	70%

*Data Source (years prior to 2024):* Integrated Postsecondary Education Data System (IPEDS). *Data Source (2024):* campus preliminary reports.



Female, Six-year Graduation Rate



## Six-year Graduation Rates by Sex

Reporting Year	2015	2016	2017	2018	2019	2020	2021	2022	2023	2024
Adjusted Cohort	2009	2010	2011	2012	2013	2014	2015	2016	2016	2016
<b>UA</b>	<b>5,062</b>	<b>5,443</b>	<b>5,665</b>	<b>6,302</b>	<b>6,385</b>	<b>6,791</b>	<b>7,169</b>	<b>7,532</b>	<b>7,380</b>	<b>6,628</b>
Male	2,316	2,437	2,526	2,783	2,795	2,919	3,000	3,238	3,154	2,886
% Graduated	63%	64%	65%	69%	68%	70%	70%	70%	71%	70%
Female	2,746	3,006	3,139	3,519	3,590	3,872	4,169	4,294	4,226	3,742
% Graduated	71%	73%	71%	74%	73%	74%	74%	74%	76%	76%
<b>UAB</b>	<b>1,494</b>	<b>1,537</b>	<b>1,576</b>	<b>1,652</b>	<b>1,727</b>	<b>1,715</b>	<b>1,590</b>	<b>1,945</b>	<b>2,207</b>	<b>2,239</b>
Male	675	686	686	707	694	731	623	728	833	798
% Graduated	50%	48%	45%	52%	59%	56%	58%	59%	57%	59%
Female	819	851	890	945	1,033	984	967	1,217	1,374	1,441
% Graduated	58%	58%	59%	63%	66%	65%	65%	67%	65%	67%
<b>UAH</b>	<b>774</b>	<b>600</b>	<b>652</b>	<b>615</b>	<b>638</b>	<b>714</b>	<b>1,026</b>	<b>1,193</b>	<b>1,339</b>	<b>1,428</b>
Male	416	350	384	337	387	437	615	726	858	905
% Graduated	48%	45%	45%	48%	55%	55%	56%	59%	58%	63%
Female	358	250	268	278	251	277	411	467	481	523
% Graduated	51%	54%	53%	56%	61%	60%	68%	69%	68%	66%
<b>UAS</b>	<b>7,330</b>	<b>7,580</b>	<b>7,893</b>	<b>8,569</b>	<b>8,750</b>	<b>9,220</b>	<b>9,785</b>	<b>10,670</b>	<b>10,926</b>	<b>10,295</b>
Male	3,407	3,473	3,596	3,827	3,876	4,087	4,238	4,692	4,845	4,589
% Graduated	59%	59%	59%	64%	65%	66%	66%	67%	66%	67%
Female	3,923	4,107	4,297	4,742	4,874	5,133	5,547	5,978	6,081	5,706
% Graduated	66%	68%	67%	71%	71%	71%	72%	73%	73%	73%

Data Source (years prior to 2024): Integrated Postsecondary Education Data System (IPEDS). Data Source (2024) : campus preliminary reports.



UA, Six-year Graduation Rate

73%

Asian, 83%

Race/ethnicity unknown,  
79%

White, 76%

American Indian or  
Alaska Native, 72%

Two or more races, 69%

Hispanic, 63%

Black or African  
American, 60%

U.S. Nonresident,  
52%

Native Hawaiian or  
Other Pacific Isl.,  
50%

## UA: Six-year Graduation Rates by Race/Ethnicity

Reporting Year	2015	2016	2017	2018	2019	2020	2021	2022	2023	2024
Adjusted Cohort	2009	2010	2011	2012	2013	2014	2015	2016	2017	2018
# Students in cohort	5,062	5,443	5,665	6,302	6,385	6,791	7,169	7,532	7,380	6,628
American Indian or Alaska Native	34	24	29	14	29	21	29	24	27	29
Asian	72	67	58	70	75	65	91	89	87	82
Black or African American	550	645	677	575	601	570	701	601	550	539
Hispanic	135	197	146	239	237	285	354	401	390	375
Native Hawaiian or Other Pacific Isl.	0	8	4	8	6	4	8	7	6	6
U.S. Nonresident	50	59	133	201	161	93	93	59	45	125
Race/ethnicity unknown	0	20	1	13	0	10	27	25	190	34
Two or more races	0	91	124	162	174	248	191	262	143	248
White	4,221	4,332	4,493	5,020	5,102	5,495	5,675	6,064	5,942	5,190
# Completers	3,396	3,740	3,845	4,530	4,540	4,899	5,178	5,480	5,438	4,863
American Indian or Alaska Native	18	14	20	10	21	11	18	14	20	21
Asian	49	49	37	52	57	47	72	64	57	68
Black or African American	300	360	365	339	340	351	397	362	343	324
Hispanic	80	116	79	151	155	190	234	268	250	237
Native Hawaiian or Other Pacific Isl.	0	6	3	6	4	3	5	4	5	3
U.S. Nonresident	39	44	97	160	112	65	69	43	33	65
Race/ethnicity unknown	0	11	1	10	0	9	18	17	139	27
Two or more races	0	56	75	99	124	159	127	175	102	171
White	2,910	3,084	3,168	3,703	3,727	4,064	4,238	4,533	4,489	3,947
Graduation Rates	67%	69%	68%	72%	71%	72%	72%	73%	74%	73%
American Indian or Alaska Native	53%	58%	69%	71%	72%	52%	62%	58%	74%	72%
Asian	68%	73%	64%	74%	76%	72%	79%	72%	66%	83%
Black or African American	55%	56%	54%	59%	57%	62%	57%	60%	62%	60%
Hispanic	59%	59%	54%	63%	65%	67%	66%	67%	64%	63%
Native Hawaiian or Other Pacific Isl.		75%	75%	75%	67%	75%	63%	57%	83%	50%
U.S. Nonresident	78%	75%	73%	80%	70%	70%	74%	73%	73%	52%
Race/ethnicity unknown		55%	100%	77%		90%	67%	68%	73%	79%
Two or more races		62%	60%	61%	71%	64%	66%	67%	71%	69%
White	69%	71%	71%	74%	73%	74%	75%	75%	76%	76%

Data Source (years prior to 2024): Integrated Postsecondary Education Data System (IPEDS). Data Source (2024) : campus preliminary reports.



64%

Race/ethnicity unknown, 86%

Asian, 82%

U.S. Nonresident, 74%

White, 65%

American Indian or...

Two or more races, 57%

Black or African American, 56%

Hispanic, 55%

## UAB: Six-year Graduation Rates by Race/Ethnicity

Reporting Year	2015	2016	2017	2018	2019	2020	2021	2022	2023	2024
Adjusted Cohort	2009	2010	2011	2012	2013	2014	2015	2016	2017	2018
# Students in cohort	1,494	1,537	1,576	1,652	1,727	1,714	1,590	1,945	2,219	2,239
American Indian or Alaska Native	12	3	4	8	3	3	5	11	6	5
Asian	79	107	108	109	142	131	158	152	169	199
Black or African American	358	402	381	373	384	449	354	493	507	479
Hispanic	37	28	36	50	40	42	52	51	55	60
Native Hawaiian or Other Pacific Isl.	1	2	1	1	0	0	0	1	0	0
U.S. Nonresident	16	12	22	17	18	30	20	43	34	27
Race/ethnicity unknown	41	12	11	8	16	5	2	6	9	7
Two or more races	18	50	72	65	75	89	78	102	125	136
White	932	921	941	1,021	1,049	965	921	1,086	1,314	1,326
# Completers	816	816	834	963	1,095	1,048	993	1,253	1,389	1,438
American Indian or Alaska Native	6	1	2	4	0	2	3	6	4	3
Asian	61	76	76	86	120	97	132	125	147	163
Black or African American	169	197	181	196	214	266	197	283	281	268
Hispanic	22	12	20	31	27	30	30	27	26	33
Native Hawaiian or Other Pacific Isl.	1	2	1	1	0	0	0	1	0	0
U.S. Nonresident	11	7	13	13	15	18	12	27	28	20
Race/ethnicity unknown	17	7	5	4	12	3	2	4	5	6
Two or more races	13	29	32	39	44	48	39	67	69	77
White	516	485	504	589	663	584	578	713	829	868
Graduation Rates	55%	53%	53%	58%	63%	61%	62%	64%	63%	64%
American Indian or Alaska Native	50%	33%	50%	50%	0%	67%	60%	55%	67%	60%
Asian	77%	71%	70%	79%	85%	74%	84%	82%	87%	82%
Black or African American	47%	49%	48%	53%	56%	59%	56%	57%	55%	56%
Hispanic	59%	43%	56%	62%	68%	71%	58%	53%	47%	55%
Native Hawaiian or Other Pacific Isl.	100%	100%	100%	100%						
U.S. Nonresident	69%	58%	59%	76%	83%	60%	60%	63%	82%	74%
Race/ethnicity unknown	41%	58%	45%	50%	75%	60%	100%	67%	56%	86%
Two or more races	72%	58%	44%	60%	59%	54%	50%	66%	55%	57%
White	55%	53%	54%	58%	63%	61%	63%	66%	63%	65%

Data Source (years prior to 2024): Integrated Postsecondary Education Data System (IPEDS). Data Source (2024) : campus preliminary reports.

64%

Asian, 85%

American Indian or Alaska Native, 80%

U.S. Nonresident, 74%

Race/ethnicity unknown, 68%

White, 66%

Two or more races, 63%

Hispanic, 57%

Black or African American, 40%

## UAH: Six-year Graduation Rates by Race/Ethnicity

Reporting Year	2015	2016	2017	2018	2019	2020	2021	2022	2023	2024
Adjusted Cohort	2009	2010	2011	2012	2013	2014	2015	2016	2017	2018
# Students in cohort	774	600	652	615	638	714	1,026	1,193	1,339	1,428
American Indian or Alaska Native	11	6	12	7	10	8	9	12	14	5
Asian	30	27	27	21	23	25	32	49	42	48
Black or African American	104	92	86	91	70	69	97	81	105	98
Hispanic	25	23	26	28	15	32	45	49	60	83
Native Hawaiian or Other Pacific Isl.	1	0	0	0	0	0	0	0	1	0
U.S. Nonresident	17	13	14	10	25	12	21	28	26	35
Race/ethnicity unknown	8	11	29	17	11	13	18	23	0	62
Two or more races	16	13	3	9	13	12	25	22	57	59
White	562	415	455	432	471	543	779	929	1,034	1,038
# Completers	382	292	317	319	368	408	623	751	829	918
American Indian or Alaska Native	4	2	5	3	5	6	6	4	9	4
Asian	16	19	16	13	15	11	26	34	31	41
Black or African American	37	32	25	36	30	33	47	39	45	39
Hispanic	7	8	10	16	5	17	29	27	37	47
Native Hawaiian or Other Pacific Isl.	1	0	0	0	0	0	0	0	0	
U.S. Nonresident	11	3	8	5	15	10	17	19	22	26
Race/ethnicity unknown	6	5	16	10	9	9	8	17	0	42
Two or more races	7	5	2	2	4	5	15	13	30	37
White	293	218	235	234	285	317	475	598	655	682
Graduation Rates	49%	49%	49%	52%	58%	57%	61%	63%	62%	64%
American Indian or Alaska Native	36%	33%	42%	43%	50%	75%	67%	33%	64%	80%
Asian	53%	70%	59%	62%	65%	44%	81%	69%	74%	85%
Black or African American	36%	35%	29%	40%	43%	48%	48%	48%	43%	40%
Hispanic	28%	35%	38%	57%	33%	53%	64%	55%	62%	57%
Native Hawaiian or Other Pacific Isl.	100%									
U.S. Nonresident	65%	23%	57%	50%	60%	83%	81%	68%	85%	74%
Race/ethnicity unknown	75%	45%	55%	59%	82%	69%	44%	74%		68%
Two or more races	44%	38%	67%	22%	31%	42%	60%	59%	53%	63%
White	52%	53%	52%	54%	61%	58%	61%	64%	63%	66%

Data Source (years prior to 2024): Integrated Postsecondary Education Data System (IPEDS). Data Source (2024) : campus preliminary reports.

70%

Asian, 83%

Race/ethnicity  
unknown, 73%

White, 73%

American Indian or  
Alaska Native, 72%

Two or more races, 64%

Hispanic, 61%

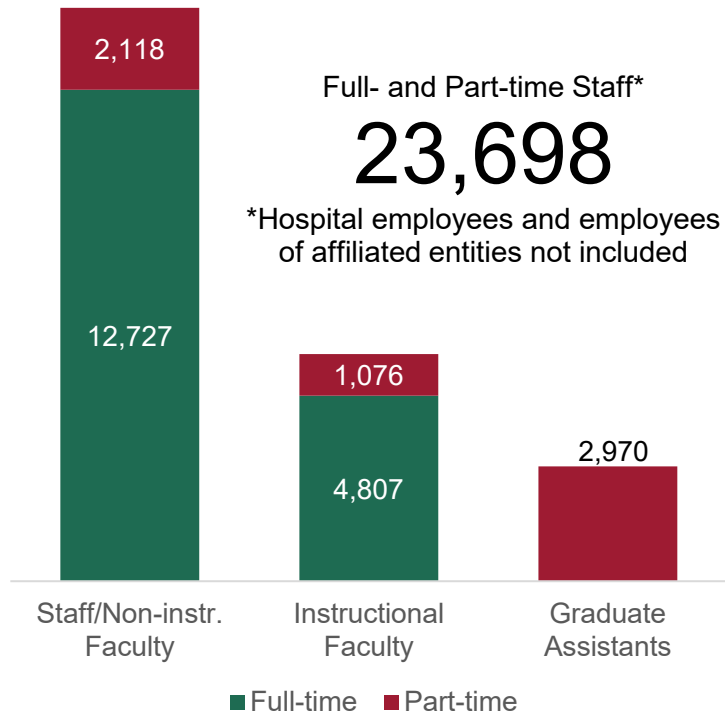
U.S. Nonresident, 59%

Black or African  
American, 57%Native Hawaiian or  
Other Pacific Isl.,  
50%

## UAS: Six-year Graduation Rates by Race/Ethnicity

Reporting Year	2015	2016	2017	2018	2019	2020	2021	2022	2023	2024
Adjusted Cohort	2009	2010	2011	2012	2013	2014	2015	2016	2017	2018
# Students in cohort	7,330	7,580	7,893	8,569	8,750	9,219	9,785	10,670	10,938	10,295
American Indian or Alaska Native	57	33	45	29	42	32	43	47	47	39
Asian	181	201	193	200	240	221	281	290	298	329
Black or African American	1,012	1,139	1,144	1,039	1,055	1,088	1,152	1,175	1,162	1,116
Hispanic	197	248	208	317	292	359	451	501	505	518
Native Hawaiian or Other Pacific Isl.	2	10	5	9	6	4	8	8	7	6
U.S. Nonresident	83	84	169	228	204	135	134	130	105	187
Race/ethnicity unknown	49	43	41	38	27	28	47	54	199	103
Two or more races	34	154	199	236	262	349	294	386	325	443
White	5,715	5,668	5,889	6,473	6,622	7,003	7,375	8,079	8,290	7,554
# Completers	4,594	4,848	4,996	5,812	6,003	6,355	6,794	7,484	7,656	7,219
American Indian or Alaska Native	28	17	27	17	26	19	27	24	33	28
Asian	126	144	129	151	192	155	230	223	235	272
Black or African American	506	589	571	571	584	650	641	684	669	631
Hispanic	109	136	109	198	187	237	293	322	313	317
Native Hawaiian or Other Pacific Isl.	2	8	4	7	4	3	5	5	5	3
U.S. Nonresident	61	54	118	178	142	93	98	89	83	111
Race/ethnicity unknown	23	23	22	24	21	21	28	38	144	75
Two or more races	20	90	109	140	172	212	181	255	201	285
White	3,719	3,787	3,907	4,526	4,675	4,965	5,291	5,844	5,973	5,497
Graduation Rates	63%	64%	63%	68%	69%	69%	69%	70%	70%	70%
American Indian or Alaska Native	49%	52%	60%	59%	62%	59%	63%	51%	70%	72%
Asian	70%	72%	67%	76%	80%	70%	82%	77%	79%	83%
Black or African American	50%	52%	50%	55%	55%	60%	56%	58%	58%	57%
Hispanic	55%	55%	52%	62%	64%	66%	65%	64%	62%	61%
Native Hawaiian or Other Pacific Isl.	100%	80%	80%	78%	67%	75%	63%	63%	71%	50%
U.S. Nonresident	73%	64%	70%	78%	70%	69%	73%	68%	79%	59%
Race/ethnicity unknown	47%	53%	54%	63%	78%	75%	60%	70%	72%	73%
Two or more races	59%	58%	55%	59%	66%	61%	62%	66%	62%	64%
White	65%	67%	66%	70%	71%	71%	72%	72%	72%	73%

Data Source (years prior to 2024): Integrated Postsecondary Education Data System (IPEDS). Data Source (2024): campus preliminary reports.



## Employees by Occupation and Status

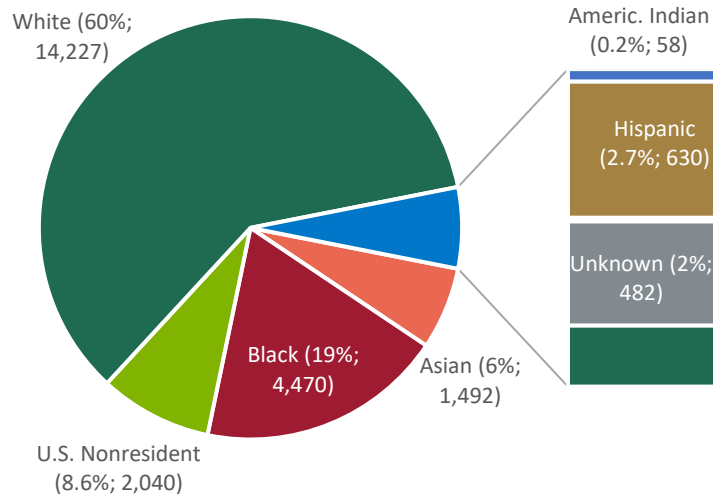
	2017	2018	2019	2020	2021	2022	2023	2024
<b>UA</b>	<b>8,447</b>	<b>8,633</b>	<b>8,755</b>	<b>8,616</b>	<b>8,923</b>	<b>9,023</b>	<b>9,339</b>	<b>9,581</b>
<b>Instructional Faculty</b>	<b>1,957</b>	<b>2,009</b>	<b>2,027</b>	<b>1,986</b>	<b>2,022</b>	<b>2,054</b>	<b>2,115</b>	<b>2,145</b>
Full-time	1,435	1,484	1,528	1,517	1,557	1,583	1,647	1,684
Part-time	522	525	499	469	465	471	468	461
<b>Staff/Non-instr. Faculty</b>	<b>4,935</b>	<b>5,031</b>	<b>5,083</b>	<b>4,934</b>	<b>5,043</b>	<b>5,115</b>	<b>5,355</b>	<b>5,483</b>
Full-time	4,368	4,469	4,520	4,463	4,509	4,568	4,738	4,842
Part-time	567	562	563	471	534	547	617	641
<b>Graduate Assistants</b>	<b>1,555</b>	<b>1,593</b>	<b>1,645</b>	<b>1,696</b>	<b>1,858</b>	<b>1,854</b>	<b>1,869</b>	<b>1,953</b>
Part-time	1,555	1,593	1,645	1,696	1,858	1,854	1,869	1,953
<b>UAB</b>	<b>10,251</b>	<b>10,684</b>	<b>11,029</b>	<b>10,576</b>	<b>10,869</b>	<b>11,205</b>	<b>11,606</b>	<b>12,006</b>
<b>Instructional Faculty</b>	<b>2,563</b>	<b>2,829</b>	<b>2,917</b>	<b>2,958</b>	<b>3,038</b>	<b>3,126</b>	<b>3,206</b>	<b>3,218</b>
Full-time	2,336	2,444	2,523	2,544	2,603	2,671	2,756	2,771
Part-time	227	385	394	414	435	455	450	447
<b>Staff/Non-instr. Faculty</b>	<b>7,175</b>	<b>7,402</b>	<b>7,662</b>	<b>7,135</b>	<b>7,334</b>	<b>7,552</b>	<b>7,829</b>	<b>8,146</b>
Full-time	5,823	5,983	6,151	5,952	6,035	6,165	6,453	6,675
Part-time	1,352	1,419	1,511	1,183	1,299	1,387	1,376	1,471
<b>Graduate Assistants</b>	<b>513</b>	<b>453</b>	<b>450</b>	<b>483</b>	<b>497</b>	<b>527</b>	<b>571</b>	<b>642</b>
Part-time	513	453	450	483	497	527	571	642
<b>UAH</b>	<b>1,941</b>	<b>1,915</b>	<b>1,918</b>	<b>1,945</b>	<b>2,022</b>	<b>2,026</b>	<b>1,972</b>	<b>2,013</b>
<b>Instructional Faculty</b>	<b>549</b>	<b>544</b>	<b>578</b>	<b>538</b>	<b>545</b>	<b>563</b>	<b>537</b>	<b>520</b>
Full-time	346	347	363	353	351	358	359	352
Part-time	203	197	215	185	194	205	178	168
<b>Staff/Non-instr. Faculty</b>	<b>1,008</b>	<b>1,013</b>	<b>1,031</b>	<b>1,054</b>	<b>1,117</b>	<b>1,123</b>	<b>1,062</b>	<b>1,118</b>
Full-time	998	1,000	1,021	1,045	1,105	1,120	1,058	1,115
Part-time	10	13	10	9	12	3	4	3
<b>Graduate Assistants</b>	<b>384</b>	<b>358</b>	<b>309</b>	<b>353</b>	<b>360</b>	<b>340</b>	<b>373</b>	<b>375</b>
Part-time	384	358	309	353	360	340	373	375
<b>UAS</b>	<b>91</b>	<b>90</b>	<b>95</b>	<b>93</b>	<b>87</b>	<b>91</b>	<b>98</b>	<b>98</b>
<b>Staff</b>	<b>91</b>	<b>90</b>	<b>95</b>	<b>93</b>	<b>87</b>	<b>91</b>	<b>98</b>	<b>98</b>
Full-time	89	85	92	92	86	89	95	95
Part-time	2	5	3	1	1	2	3	3
<b>Total</b>	<b>20,730</b>	<b>21,322</b>	<b>21,797</b>	<b>21,230</b>	<b>21,901</b>	<b>22,345</b>	<b>23,015</b>	<b>23,698</b>

Data Source (years prior to 2024): Integrated Postsecondary Education Data System (IPEDS). Data Source (2024): campus preliminary reports.



## African American Employees

19%

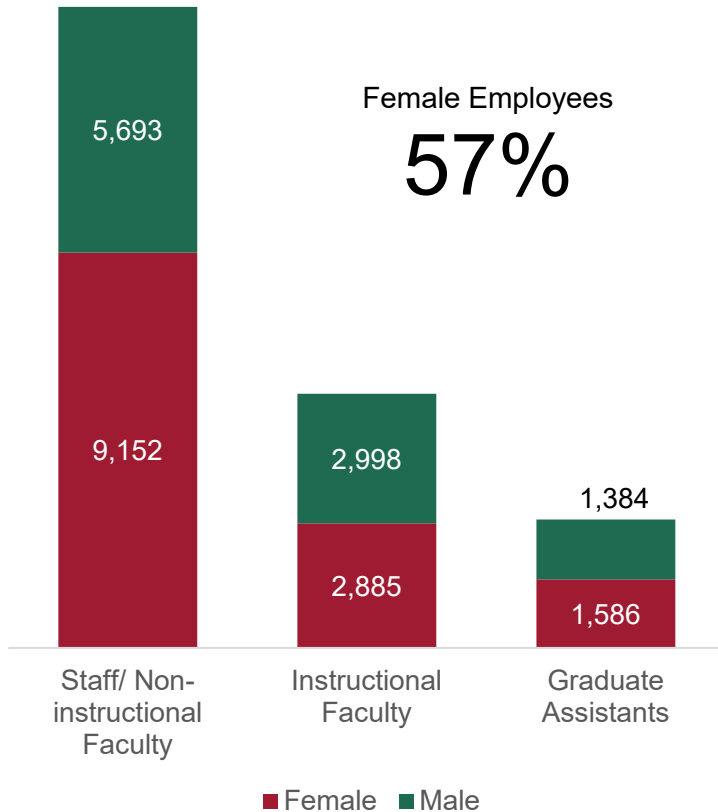
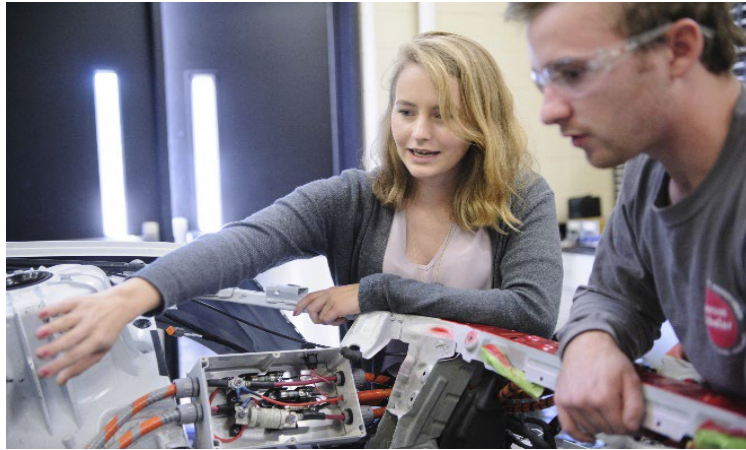


- Americ. Indian (0.2%; 58)
- Asian (6%; 1,492)
- Black (19%; 4,470)
- Hispanic (2.7%; 630)
- Pacif. Island. (0.1%; 17)
- U.S. Nonresident (8.6%; 2,040)
- Unknown (2%; 482)
- Two or more races (1.2%; 282)
- White (60%; 14,227)

## Employees by Race/Ethnicity

	2017	2018	2019	2020	2021	2022	2023	2024
<b>UA</b>	<b>8,447</b>	<b>8,633</b>	<b>8,755</b>	<b>8,616</b>	<b>8,923</b>	<b>9,023</b>	<b>9,339</b>	<b>9,581</b>
Amer. Indian or Alaska Nat.	19	20	14	14	12	10	15	13
Asian	189	212	241	237	273	299	319	345
Black or African American	1,284	1,326	1,330	1,285	1,335	1,383	1,447	1,396
Hispanic or Latino	164	174	190	204	223	233	235	255
Native Hawaiian or Pacific Isl.	4	4	4	4	6	6	5	5
US Nonresident	542	560	578	600	692	763	845	927
Race/ethnicity unknown	40	46	51	46	38	38	34	32
Two or more races	70	73	90	97	88	89	97	107
White	6,135	6,218	6,257	6,129	6,256	6,202	6,342	6,501
<b>UAB</b>	<b>10,251</b>	<b>10,684</b>	<b>11,029</b>	<b>10,576</b>	<b>10,869</b>	<b>11,205</b>	<b>11,606</b>	<b>12,006</b>
Amer. Indian or Alaska Nat.	20	20	19	20	17	24	26	29
Asian	798	813	829	852	880	911	947	968
Black or African American	2,425	2,559	2,633	2,370	2,490	2,638	2,723	2,891
Hispanic or Latino	174	183	205	198	230	244	290	312
Native Hawaiian or Pacific Isl.	11	11	13	10	11	6	8	12
US Nonresident	611	667	702	720	680	718	845	947
Race/ethnicity unknown	27	59	93	108	123	143	167	441
Two or more races	71	88	102	97	111	136	153	166
White	6,114	6,284	6,433	6,201	6,327	6,385	6,447	6,240
<b>UAH</b>	<b>1,941</b>	<b>1,915</b>	<b>1,918</b>	<b>1,945</b>	<b>2,022</b>	<b>2,026</b>	<b>1,972</b>	<b>2,013</b>
Amer. Indian or Alaska Nat.	12	10	9	10	12	14	15	16
Asian	101	106	110	116	120	119	114	176
Black or African American	203	200	205	203	201	193	173	172
Hispanic or Latino	27	22	30	34	41	47	47	61
Native Hawaiian or Pacific Isl.	2	3	0	0	1			
US Nonresident	195	184	172	179	175	193	245	166
Race/ethnicity unknown	14	11	38	41	12	46	11	9
Two or more races	5	4	3	6	8	9	9	7
White	1,382	1,375	1,351	1,356	1,452	1,405	1,358	1,406
<b>UAS</b>	<b>91</b>	<b>90</b>	<b>95</b>	<b>93</b>	<b>87</b>	<b>91</b>	<b>98</b>	<b>98</b>
Asian	2	2	1	3	3	3	3	3
Black or African American	14	15	14	14	13	11	11	11
Hispanic or Latino	0	0	0	0	0	2	2	2
Two or more races	0	0	0	0	0	1	2	2
White	75	73	80	76	71	74	80	80
<b>Total</b>	<b>20,730</b>	<b>21,322</b>	<b>21,797</b>	<b>21,230</b>	<b>21,901</b>	<b>22,345</b>	<b>23,015</b>	<b>23,698</b>

Data Source (years prior to 2024): Integrated Postsecondary Education Data System (IPEDS). Data Source (2024): campus preliminary reports.



## Employees by Sex

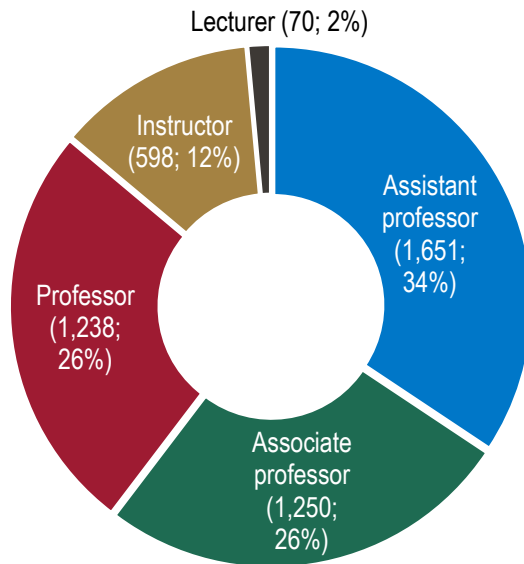
	2017	2018	2019	2020	2021	2022	2023	2024
<b>UA</b>	<b>8,447</b>	<b>8,633</b>	<b>8,755</b>	<b>8,616</b>	<b>8,923</b>	<b>9,023</b>	<b>9,339</b>	<b>9,581</b>
<b>Instructional Faculty</b>	<b>1,957</b>	<b>2,009</b>	<b>2,027</b>	<b>1,986</b>	<b>2,022</b>	<b>2,054</b>	<b>2,115</b>	<b>2,145</b>
Female	947	961	974	954	1,001	1,045	1,092	1,094
Male	1,010	1,048	1,053	1,032	1,021	1,009	1,023	1,051
<b>Staff/Non-instr. Faculty</b>	<b>4,935</b>	<b>5,031</b>	<b>5,083</b>	<b>4,934</b>	<b>5,043</b>	<b>5,115</b>	<b>5,355</b>	<b>5,483</b>
Female	2,854	2,893	2,957	2,872	2,961	3,025	3,149	3,233
Male	2,081	2,138	2,126	2,062	2,082	2,090	2,206	2,250
<b>Graduate Assistants</b>	<b>1,555</b>	<b>1,593</b>	<b>1,645</b>	<b>1,696</b>	<b>1,858</b>	<b>1,854</b>	<b>1,869</b>	<b>1,953</b>
Female	765	810	876	917	974	937	944	1,007
Male	790	783	769	779	884	917	925	946
<b>UAB</b>	<b>10,251</b>	<b>10,684</b>	<b>11,029</b>	<b>10,576</b>	<b>10,869</b>	<b>11,205</b>	<b>11,606</b>	<b>12,006</b>
<b>Instructional Faculty</b>	<b>2,563</b>	<b>2,829</b>	<b>2,917</b>	<b>2,958</b>	<b>3,038</b>	<b>3,126</b>	<b>3,206</b>	<b>3,218</b>
Female	1,059	1,228	1,297	1,338	1,409	1,502	1,533	1,560
Male	1,504	1,601	1,620	1,620	1,629	1,624	1,673	1,658
<b>Staff/Non-instr. Faculty</b>	<b>7,175</b>	<b>7,402</b>	<b>7,662</b>	<b>7,135</b>	<b>7,334</b>	<b>7,552</b>	<b>7,829</b>	<b>8,146</b>
Female	4,596	4,745	4,917	4,561	4,668	4,854	5,091	5,282
Male	2,579	2,657	2,745	2,574	2,666	2,698	2,738	2,864
<b>Graduate Assistants</b>	<b>513</b>	<b>453</b>	<b>450</b>	<b>483</b>	<b>497</b>	<b>527</b>	<b>571</b>	<b>642</b>
Female	243	202	224	238	272	295	313	351
Male	270	251	226	245	225	232	258	291
<b>UAH</b>	<b>1,941</b>	<b>1,915</b>	<b>1,918</b>	<b>1,945</b>	<b>2,022</b>	<b>2,026</b>	<b>1,972</b>	<b>2,013</b>
<b>Instructional Faculty</b>	<b>549</b>	<b>544</b>	<b>578</b>	<b>538</b>	<b>545</b>	<b>563</b>	<b>537</b>	<b>520</b>
Female	267	268	287	256	264	265	247	231
Male	282	276	291	282	281	298	290	289
<b>Staff/Non-instr. Faculty</b>	<b>1,008</b>	<b>1,013</b>	<b>1,031</b>	<b>1,054</b>	<b>1,117</b>	<b>1,123</b>	<b>1,062</b>	<b>1,118</b>
Female	503	521	522	530	558	588	565	573
Male	505	492	509	524	559	535	497	545
<b>Graduate Assistants</b>	<b>384</b>	<b>358</b>	<b>309</b>	<b>353</b>	<b>360</b>	<b>340</b>	<b>373</b>	<b>375</b>
Female	159	153	129	150	156	144	137	228
Male	225	205	180	203	204	196	236	147
<b>UAS</b>	<b>91</b>	<b>90</b>	<b>95</b>	<b>93</b>	<b>87</b>	<b>91</b>	<b>98</b>	<b>98</b>
<b>Staff</b>	<b>91</b>	<b>90</b>	<b>95</b>	<b>93</b>	<b>87</b>	<b>91</b>	<b>98</b>	<b>98</b>
Female	60	58	61	59	57	61	64	64
Male	31	32	34	34	30	30	34	34
<b>Total</b>	<b>20,730</b>	<b>21,322</b>	<b>21,797</b>	<b>21,230</b>	<b>21,901</b>	<b>22,345</b>	<b>23,015</b>	<b>23,698</b>

Data Source (years prior to 2024): Integrated Postsecondary Education Data System (IPEDS). Data Source (2024): campus preliminary reports.



Fall 2024 Full-time Faculty

4,807



## Full-time Faculty by Rank

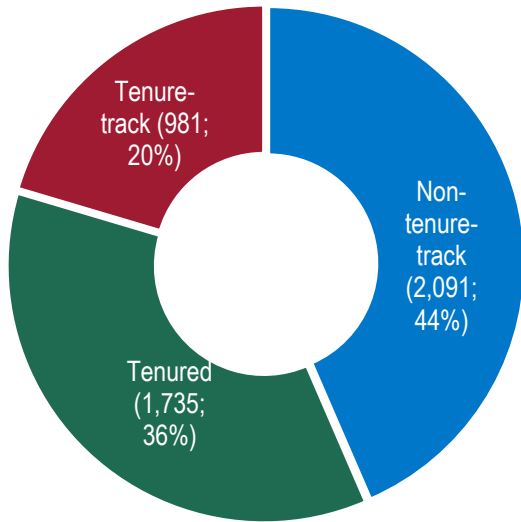
	2017	2018	2019	2020	2021	2022	2023	2024
<b>UA</b>	<b>1,435</b>	<b>1,484</b>	<b>1,528</b>	<b>1,517</b>	<b>1,557</b>	<b>1,583</b>	<b>1,647</b>	<b>1,684</b>
Assistant professor	461	494	502	474	479	478	487	491
Associate professor	337	352	363	392	403	409	438	450
Professor	311	311	319	321	334	330	335	350
Instructor	308	310	328	324	339	366	387	393
Lecturer	18	17	16	6	2			
<b>UAB</b>	<b>2,336</b>	<b>2,444</b>	<b>2,523</b>	<b>2,544</b>	<b>2,603</b>	<b>2,668</b>	<b>2,756</b>	<b>2,771</b>
Assistant professor	813	894	893	890	933	969	1,031	1,050
Associate professor	608	614	677	695	720	719	732	710
Professor	704	718	735	744	746	772	787	816
Instructor	211	218	218	215	204	208	206	195
<b>UAH</b>	<b>346</b>	<b>347</b>	<b>363</b>	<b>353</b>	<b>351</b>	<b>358</b>	<b>359</b>	<b>352</b>
Assistant professor	95	90	97	94	91	102	118	110
Associate professor	105	107	101	97	96	86	87	90
Professor	62	64	75	75	73	77	75	72
Instructor	13	14	16	14	16	16	13	10
Lecturer	71	72	74	73	75	77	66	70
<b>UAS Total</b>	<b>4,117</b>	<b>4,275</b>	<b>4,414</b>	<b>4,414</b>	<b>4,511</b>	<b>4,609</b>	<b>4,762</b>	<b>4,807</b>
Assistant professor	1,369	1,478	1,492	1,458	1,503	1,549	1,636	1,651
Associate professor	1,050	1,073	1,141	1,184	1,219	1,214	1,257	1,250
Professor	1,077	1,093	1,129	1,140	1,153	1,179	1,197	1,238
Instructor	532	542	562	553	559	590	606	598
Lecturer	89	89	90	79	77	77	66	70

*Data Source (years prior to 2024):* Integrated Postsecondary Education Data System (IPEDS). *Data Source (2024):* campus preliminary reports.



Tenured/Tenure-track Faculty

57%



## Full-time Faculty by Tenure Status

	2017	2018	2019	2020	2021	2022	2023	2024
<b>UA</b>	<b>1,435</b>	<b>1,484</b>	<b>1,528</b>	<b>1,517</b>	<b>1,557</b>	<b>1,583</b>	<b>1,647</b>	<b>1,684</b>
Non-tenure-track	486	492	523	519	557	602	649	683
Tenured	584	591	597	614	631	621	664	695
Tenure-track	365	401	408	384	369	360	334	306
% Tenured/Tenure-track	66%	67%	66%	66%	64%	62%	61%	59%
<b>UAB</b>	<b>2,336</b>	<b>2,444</b>	<b>2,523</b>	<b>2,544</b>	<b>2,603</b>	<b>2,671</b>	<b>2,756</b>	<b>2,771</b>
Non-tenure-track	988	1,056	1,108	1,137	1,178	1,218	1,276	1,281
Tenured	819	855	900	896	883	899	904	898
Tenure-track	529	533	515	511	542	554	576	592
% Tenured/Tenure-track	58%	57%	56%	55%	55%	54%	54%	54%
<b>UAH</b>	<b>346</b>	<b>347</b>	<b>363</b>	<b>353</b>	<b>351</b>	<b>358</b>	<b>359</b>	<b>352</b>
Non-tenure-track	121	120	127	126	131	142	130	127
Tenured	154	158	164	159	158	154	153	142
Tenure-track	71	69	72	68	62	62	76	83
% Tenured/Tenure-track	65%	65%	65%	64%	63%	61%	64%	64%
<b>UAS Total</b>	<b>4,117</b>	<b>4,275</b>	<b>4,414</b>	<b>4,414</b>	<b>4,511</b>	<b>4,612</b>	<b>4,762</b>	<b>4,807</b>
Non-tenure-track	1,595	1,668	1,758	1,782	1,866	1,962	2,055	2,091
Tenured	1,557	1,604	1,661	1,669	1,672	1,674	1,721	1,735
Tenure-track	965	1,003	995	963	973	976	986	981
% Tenured/Tenure-track	61%	61%	60%	60%	59%	57%	57%	57%

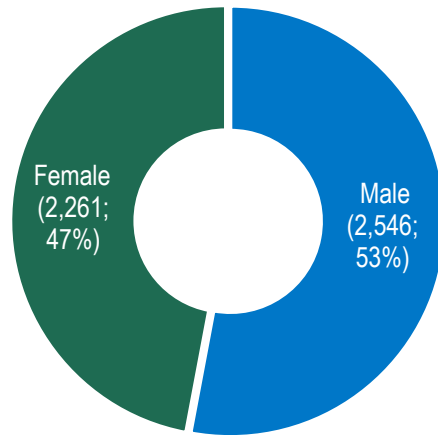
Data Source (years prior to 2024): Integrated Postsecondary Education Data System (IPEDS). Data Source (2024): campus preliminary reports.





Female Faculty

47%



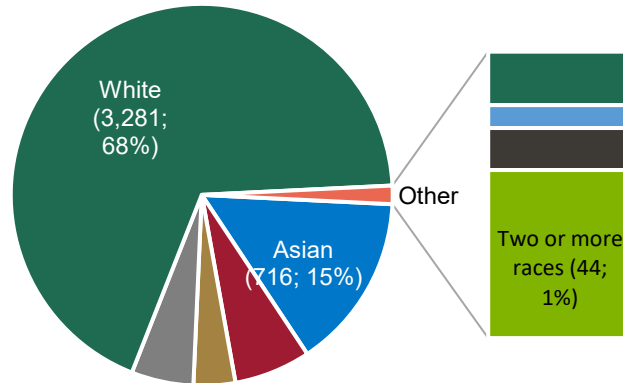
Full-time Faculty by Sex

	2017	2018	2019	2020	2021	2022	2023	2024
<b>UA</b>	<b>1,435</b>	<b>1,484</b>	<b>1,528</b>	<b>1,517</b>	<b>1,557</b>	<b>1,583</b>	<b>1,647</b>	<b>1,684</b>
Male	788	813	834	818	835	835	857	875
Female	647	671	694	699	722	748	790	809
% Female	45%	45%	45%	46%	46%	47%	48%	48%
<b>UAB</b>	<b>2,336</b>	<b>2,444</b>	<b>2,523</b>	<b>2,544</b>	<b>2,603</b>	<b>2,671</b>	<b>2,756</b>	<b>2,771</b>
Male	1,389	1,432	1,441	1,438	1,449	1,446	1,479	1,477
Female	947	1,012	1,082	1,106	1,154	1,225	1,277	1,294
% Female	41%	41%	43%	43%	44%	46%	46%	47%
<b>UAH</b>	<b>346</b>	<b>347</b>	<b>363</b>	<b>353</b>	<b>351</b>	<b>358</b>	<b>359</b>	<b>352</b>
Male	191	191	196	194	188	194	195	194
Female	155	156	167	159	163	164	164	158
% Female	45%	45%	46%	45%	46%	46%	46%	45%
<b>UAS Total</b>	<b>4,117</b>	<b>4,275</b>	<b>4,414</b>	<b>4,414</b>	<b>4,511</b>	<b>4,612</b>	<b>4,762</b>	<b>4,807</b>
Male	2,368	2,436	2,471	2,450	2,472	2,475	2,531	2,546
Female	1,749	1,839	1,943	1,964	2,039	2,137	2,231	2,261
% Female	42%	43%	44%	44%	45%	46%	47%	47%

Data Source (years prior to 2024): Integrated Postsecondary Education Data System (IPEDS). Data Source (2024): campus preliminary reports.

# African American Faculty

6%



- American Indian or Alaska Native (14)
- Asian (716; 15%)
- Black or African American (312; 6%)
- Hispanic or Latino (170; 4%)
- Native Hawaiian or Other Pacific Islander (6)
- U.S. Nonresident (253; 5%)
- Race/ethnicity unknown (11)
- Two or more races (44; 1%)
- White (3,281; 68%)

## Full-Time Faculty by Race/Ethnicity

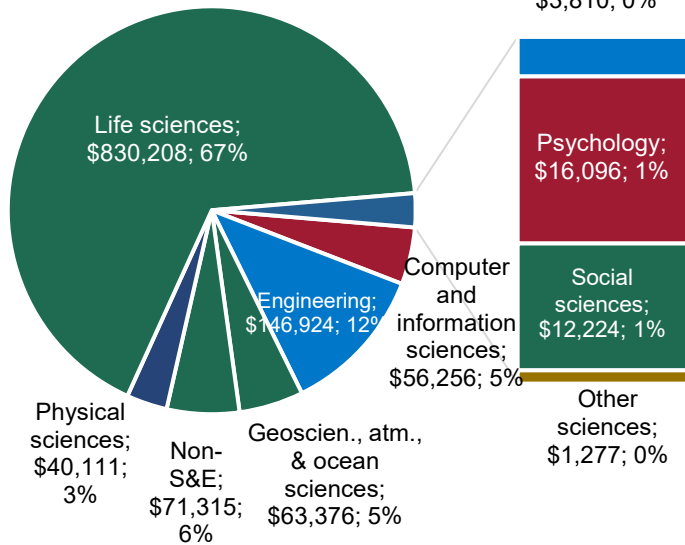
	2017	2018	2019	2020	2021	2022	2023	2024
<b>The University of Alabama</b>	<b>1,435</b>	<b>1,484</b>	<b>1,528</b>	<b>1,517</b>	<b>1,557</b>	<b>1,583</b>	<b>1,647</b>	<b>1,684</b>
American Indian or Alaska Native	4	4	4	4	3	2	2	2
Asian	107	118	137	134	146	157	176	185
Black or African American	93	93	94	97	98	92	95	98
Hispanic or Latino	34	37	41	44	45	46	51	53
Native Hawaiian or Other Pacific Islander	2	2	3	3	3	4	4	4
U.S. Nonresident	61	65	61	68	77	72	74	79
Race/ethnicity unknown	1	3	6	3	3	10	9	8
Two or more races	2	4	6	8	12	10	10	10
White	1,131	1,158	1,176	1,156	1,170	1,190	1,226	1,245
<b>University of Alabama at Birmingham</b>	<b>2,336</b>	<b>2,444</b>	<b>2,523</b>	<b>2,544</b>	<b>2,603</b>	<b>2,671</b>	<b>2,756</b>	<b>2,771</b>
American Indian or Alaska Native	4	4	4	5	4	8	7	9
Asian	356	372	391	398	410	428	452	452
Black or African American	146	154	155	153	161	172	179	194
Hispanic or Latino	71	75	78	80	83	91	102	107
Native Hawaiian or Other Pacific Islander	2	1	1	2	3	2	1	2
U.S. Nonresident	91	115	137	152	148	133	142	165
Race/ethnicity unknown	1	3	1	2	1	4	4	3
Two or more races	17	17	18	17	21	24	28	33
White	1,648	1,703	1,738	1,735	1,772	1,809	1,841	1,806
<b>University of Alabama in Huntsville</b>	<b>346</b>	<b>347</b>	<b>363</b>	<b>353</b>	<b>351</b>	<b>358</b>	<b>359</b>	<b>352</b>
American Indian or Alaska Native			1	2	3	2	3	3
Asian	58	60	62	60	64	70	63	79
Black or African American	16	17	20	18	18	20	21	20
Hispanic or Latino	8	7	8	7	9	9	10	10
Native Hawaiian or Other Pacific Islander	1	1						
U.S. Nonresident	13	16	18	21	17	13	27	9
Two or more races	1	1	1	1	1	1	1	1
White	249	245	253	244	239	243	234	230
<b>UAS Total</b>	<b>4,117</b>	<b>4,275</b>	<b>4,414</b>	<b>4,414</b>	<b>4,511</b>	<b>4,609</b>	<b>4,762</b>	<b>4,807</b>

Data Source (years prior to 2024): Integrated Postsecondary Education Data System (IPEDS). Data Source (2024): campus preliminary reports.



R&D Expenditures  
(Dollars in Thousands)

**\$1,241,597**

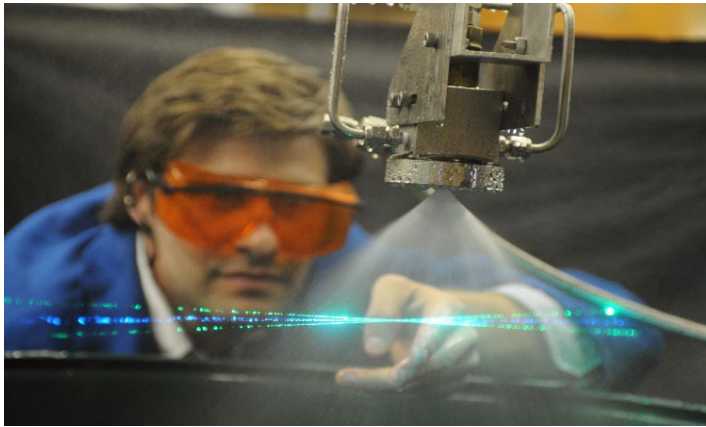


## R&D Expenditures by Field of Study

(Dollars in Thousands)

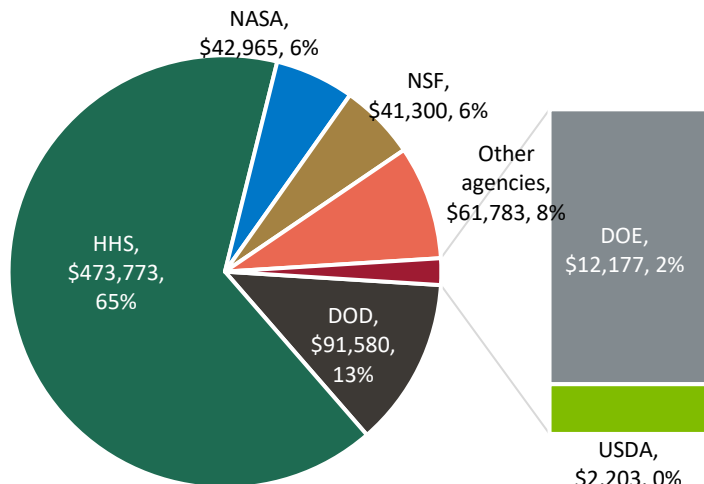
	2017	2018	2019	2020	2021	2022	2023	2024
<b>UA</b>	<b>\$63,282</b>	<b>\$71,992</b>	<b>\$83,317</b>	<b>\$95,200</b>	<b>\$129,509</b>	<b>\$163,204</b>	<b>\$184,880</b>	<b>\$221,235</b>
Comp. and information scien.	\$12,047	\$11,550	\$12,482	\$12,836	\$12,797	\$16,400	\$18,813	\$17,105
Engineering	\$19,382	\$24,667	\$31,845	\$33,019	\$43,941	\$49,885	\$51,029	\$62,000
Geosc., atmosph., & ocean sc.	\$828	\$895	\$1,000	\$3,062	\$4,302	\$5,895	\$16,822	\$35,455
Life sciences	\$5,668	\$7,297	\$8,452	\$8,985	\$14,565	\$22,348	\$23,853	\$22,097
Mathematics and statistics	\$99	\$43	\$179	\$262	\$1,174	\$2,367	\$2,918	\$2,599
Non-S&E	\$11,131	\$12,081	\$15,285	\$22,940	\$29,799	\$40,440	\$41,017	\$47,967
Other sciences						\$58	\$264	\$1,277
Physical sciences	\$6,275	\$7,501	\$5,815	\$6,471	\$7,991	\$7,524	\$11,124	\$14,912
Psychology	\$3,394	\$2,889	\$2,931	\$3,030	\$5,384	\$5,349	\$5,690	\$7,374
Social sciences	\$4,458	\$5,069	\$5,328	\$4,595	\$9,556	\$12,938	\$13,350	\$10,449
<b>UAB</b>	<b>\$561,851</b>	<b>\$588,207</b>	<b>\$607,863</b>	<b>\$618,226</b>	<b>\$644,330</b>	<b>\$713,480</b>	<b>\$780,479</b>	<b>\$865,868</b>
Comp. and information scien.	\$575	\$919	\$827	\$1,502	\$1,356	\$898	\$1,013	\$1,238
Engineering	\$47,730	\$48,102	\$47,555	\$53,030	\$46,844	\$30,637	\$28,505	\$30,203
Geosc., atmosph., & ocean sc.	\$1,496	\$1,199	\$870	\$701	\$436	\$66		
Life sciences	\$491,477	\$511,345	\$533,536	\$542,308	\$571,525	\$653,373	\$721,450	\$804,993
Mathematics and statistics	\$324	\$320	\$876	\$916	\$383	\$263	\$169	\$328
Non-S&E	\$8,200	\$13,147	\$12,502	\$9,681	\$7,879	\$11,712	\$11,221	\$13,164
Other sciences					\$10			
Physical sciences	\$5,667	\$7,211	\$5,961	\$4,678	\$9,885	\$6,282	\$5,624	\$7,068
Psychology	\$5,558	\$5,355	\$4,933	\$5,164	\$5,695	\$9,755	\$11,715	\$8,443
Social sciences	\$824	\$609	\$803	\$246	\$317	\$494	\$782	\$431
<b>UAH</b>	<b>\$94,376</b>	<b>\$99,405</b>	<b>\$109,744</b>	<b>\$131,648</b>	<b>\$149,792</b>	<b>\$169,532</b>	<b>\$163,428</b>	<b>\$154,494</b>
Comp. and information scien.	\$27,191	\$26,973	\$29,177	\$36,636	\$48,967	\$60,893	\$47,962	\$37,913
Engineering	\$32,555	\$34,105	\$40,733	\$51,198	\$55,510	\$53,958	\$55,164	\$54,721
Geosc., atmosph., & ocean sc.	\$13,866	\$12,552	\$16,001	\$17,304	\$17,960	\$23,111	\$24,941	\$27,921
Life sciences	\$1,864	\$2,528	\$2,815	\$3,170	\$2,620	\$2,695	\$3,100	\$3,118
Mathematics and statistics	\$512	\$500	\$627	\$726	\$709	\$655	\$775	\$883
Non-S&E	\$4,984	\$4,886	\$4,920	\$7,326	\$7,902	\$8,906	\$9,928	\$10,184
Physical sciences	\$10,415	\$14,459	\$12,963	\$13,353	\$15,071	\$17,852	\$19,243	\$18,131
Psychology	\$124	\$175	\$183	\$218	\$233	\$349	\$405	\$279
Social sciences	\$2,865	\$3,227	\$2,325	\$1,717	\$820	\$1,113	\$1,910	\$1,344
<b>Total</b>	<b>\$719,509</b>	<b>\$759,604</b>	<b>\$800,924</b>	<b>\$845,074</b>	<b>\$923,631</b>	<b>\$1,046,216</b>	<b>\$1,128,787</b>	<b>\$1,241,597</b>

Source: Higher Education Research and Development Survey (HERD)



Federally Funded R&D Expenditures

**\$725,781**



## R&D Expenditures by Source of Funding

(Dollars in Thousands)

	2017	2018	2019	2020	2021	2022	2023	2024
<b>UA</b>	<b>\$63,282</b>	<b>\$71,992</b>	<b>\$83,317</b>	<b>\$95,200</b>	<b>\$129,509</b>	<b>\$163,204</b>	<b>\$184,880</b>	<b>\$221,235</b>
<b>Federal</b>	<b>\$27,692</b>	<b>\$30,447</b>	<b>\$37,916</b>	<b>\$43,017</b>	<b>\$53,880</b>	<b>\$67,986</b>	<b>\$86,244</b>	<b>\$112,199</b>
DOD	\$2,620	\$2,503	\$3,428	\$6,693	\$7,238	\$11,677	\$13,447	\$11,900
DOE	\$2,216	\$2,794	\$3,893	\$4,496	\$5,763	\$5,613	\$5,599	\$7,420
HHS	\$6,640	\$5,312	\$6,158	\$7,514	\$11,545	\$14,699	\$17,648	\$22,292
NASA	\$1,086	\$1,397	\$1,463	\$1,391	\$1,688	\$1,619	\$1,911	\$1,625
NSF	\$7,548	\$10,077	\$9,954	\$10,698	\$13,801	\$18,453	\$18,364	\$22,327
USDA	\$390	\$373	\$595	\$558	\$595	\$981	\$1,613	\$1,722
Other agencies	\$7,192	\$7,991	\$12,425	\$11,667	\$13,250	\$14,944	\$27,662	\$44,913
<b>Non-federal</b>	<b>\$35,590</b>	<b>\$41,545</b>	<b>\$45,401</b>	<b>\$52,183</b>	<b>\$75,629</b>	<b>\$95,218</b>	<b>\$98,636</b>	<b>\$109,036</b>
Business	\$1,945	\$2,917	\$2,799	\$2,525	\$2,679	\$2,701	\$1,973	\$1,830
Institution funds	\$22,563	\$27,111	\$30,801	\$32,141	\$55,682	\$73,435	\$77,554	\$85,564
Nonprofit organizations	\$1,084	\$850	\$977	\$1,071	\$1,291	\$1,631	\$1,753	\$3,077
State and local government	\$9,585	\$9,607	\$9,791	\$16,018	\$15,693	\$17,040	\$16,660	\$17,606
All other sources	\$413	\$1,060	\$1,033	\$428	\$284	\$411	\$696	\$959
<b>UAB</b>	<b>\$561,851</b>	<b>\$588,207</b>	<b>\$607,863</b>	<b>\$618,226</b>	<b>\$644,330</b>	<b>\$713,480</b>	<b>\$780,479</b>	<b>\$865,868</b>
<b>Federal</b>	<b>\$358,916</b>	<b>\$373,360</b>	<b>\$398,403</b>	<b>\$400,110</b>	<b>\$423,290</b>	<b>\$421,223</b>	<b>\$451,880</b>	<b>\$498,148</b>
DOD	\$26,393	\$26,029	\$29,147	\$37,281	\$37,824	\$24,013	\$13,798	\$18,985
DOE	\$8,239	\$6,717	\$5,778	\$5,945	\$3,487	\$2,484	\$1,949	\$3,559
HHS	\$302,624	\$313,677	\$337,055	\$332,215	\$360,322	\$380,585	\$417,750	\$450,530
NASA	\$9,634	\$12,118	\$11,500	\$11,153	\$9,847	\$2,244	\$4,278	\$4,346
NSF	\$6,066	\$7,137	\$7,462	\$6,680	\$6,607	\$6,387	\$7,969	\$8,687
USDA	\$8	\$77	\$89	\$74	\$260	\$104	\$166	\$272
Other agencies	\$5,952	\$7,605	\$7,372	\$6,762	\$4,943	\$5,406	\$5,970	\$11,769
<b>Non-federal</b>	<b>\$202,935</b>	<b>\$214,847</b>	<b>\$209,460</b>	<b>\$218,116</b>	<b>\$221,040</b>	<b>\$292,257</b>	<b>\$328,599</b>	<b>\$367,720</b>
Business	\$57,874	\$60,726	\$60,048	\$58,758	\$61,764	\$73,595	\$74,171	\$71,057
Institution funds	\$109,918	\$115,860	\$106,085	\$116,242	\$116,561	\$172,809	\$184,658	\$232,305
Nonprofit organizations	\$29,280	\$30,200	\$31,893	\$33,706	\$31,641	\$35,196	\$36,533	\$41,550
State and local government	\$5,403	\$7,508	\$11,434	\$8,209	\$9,355	\$8,816	\$14,884	\$18,482
All other sources	\$460	\$553		\$1,201	\$1,719	\$1,841	\$18,353	\$4,326

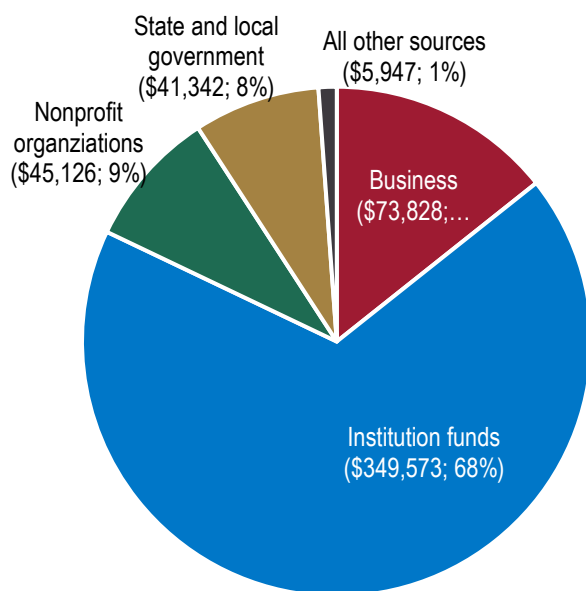
Source: Higher Education Research and Development Survey (HERD)





Non-federally Funded R&D Expenditures

**\$515,816**



## R&D Expenditures by Source of Funding (Dollars in Thousands)

	2017	2018	2019	2020	2021	2022	2023	2024
<b>UAH</b>	<b>\$94,376</b>	<b>\$99,405</b>	<b>\$109,744</b>	<b>\$131,648</b>	<b>\$149,792</b>	<b>\$169,532</b>	<b>\$163,428</b>	<b>\$154,494</b>
<b>Federal</b>	<b>\$68,609</b>	<b>\$74,650</b>	<b>\$85,211</b>	<b>\$104,288</b>	<b>\$116,971</b>	<b>\$132,060</b>	<b>\$126,040</b>	<b>\$115,434</b>
DOD	\$38,982	\$40,095	\$47,429	\$61,157	\$73,021	\$80,980	\$67,527	\$60,695
DOE	\$438	\$212	\$462	\$416	\$816	\$869	\$1,177	\$1,198
HHS	\$334	\$470	\$696	\$578	\$324	\$283	\$671	\$951
NASA	\$21,766	\$23,352	\$23,676	\$27,270	\$28,939	\$33,436	\$36,648	\$36,994
NSF	\$4,098	\$7,095	\$8,654	\$8,210	\$7,400	\$7,672	\$10,710	\$10,286
USDA	\$150	\$185	\$246	\$189	\$143	\$267	\$264	\$209
Other agencies	\$2,841	\$3,241	\$4,048	\$6,468	\$6,328	\$8,553	\$9,043	\$5,101
<b>Non-federal</b>	<b>\$25,767</b>	<b>\$24,755</b>	<b>\$24,533</b>	<b>\$27,360</b>	<b>\$32,821</b>	<b>\$37,472</b>	<b>\$37,388</b>	<b>\$39,060</b>
Business	\$1,439	\$1,001	\$1,069	\$970	\$688	\$626	\$731	\$941
Institution funds	\$21,965	\$21,886	\$21,663	\$22,569	\$26,294	\$30,776	\$30,635	\$31,704
Nonprofit organizations	\$510	\$297	\$301	\$282	\$610	\$496	\$689	\$499
State and local government	\$1,358	\$1,442	\$1,378	\$3,407	\$4,743	\$5,091	\$5,071	\$5,254
All other sources	\$495	\$129	\$122	\$132	\$486	\$483	\$262	\$662
<b>UAS Total</b>	<b>\$719,509</b>	<b>\$759,604</b>	<b>\$800,924</b>	<b>\$845,074</b>	<b>\$923,631</b>	<b>\$1,046,216</b>	<b>\$1,128,787</b>	<b>\$1,241,597</b>
<b>Federal</b>	<b>\$455,217</b>	<b>\$478,457</b>	<b>\$521,530</b>	<b>\$547,415</b>	<b>\$594,141</b>	<b>\$621,269</b>	<b>\$664,164</b>	<b>\$725,781</b>
DOD	\$67,995	\$68,627	\$80,004	\$105,131	\$118,083	\$116,670	\$94,772	\$91,580
DOE	\$10,893	\$9,723	\$10,133	\$10,857	\$10,066	\$8,966	\$8,725	\$12,177
HHS	\$309,598	\$319,459	\$343,909	\$340,307	\$372,191	\$395,567	\$436,069	\$473,773
NASA	\$32,486	\$36,867	\$36,639	\$39,814	\$40,474	\$37,299	\$42,837	\$42,965
NSF	\$17,712	\$24,309	\$26,070	\$25,588	\$27,808	\$32,512	\$37,043	\$41,300
USDA	\$548	\$635	\$930	\$821	\$998	\$1,352	\$2,043	\$2,203
Other agencies	\$15,985	\$18,837	\$23,845	\$24,897	\$24,521	\$28,903	\$42,675	\$61,783
<b>Non-federal</b>	<b>\$264,292</b>	<b>\$281,147</b>	<b>\$279,394</b>	<b>\$297,659</b>	<b>\$329,490</b>	<b>\$424,947</b>	<b>\$464,623</b>	<b>\$515,816</b>
Business	\$61,258	\$64,644	\$63,916	\$62,253	\$65,131	\$76,922	\$76,875	\$73,828
Institution funds	\$154,446	\$164,857	\$158,549	\$170,952	\$198,537	\$277,020	\$292,847	\$349,573
Nonprofit organizations	\$30,874	\$31,347	\$33,171	\$35,059	\$33,542	\$37,323	\$38,975	\$45,126
State and local government	\$16,346	\$18,557	\$22,603	\$27,634	\$29,791	\$30,947	\$36,615	\$41,342
All other sources	\$1,368	\$1,742	\$1,155	\$1,761	\$2,489	\$2,735	\$19,311	\$5,947

Source: Higher Education Research and Development Survey (HERD)





## Statements of Net Position

### The University of Alabama

2024  
End of Year  
Net Position  
**\$3,564,482,956**

2024  
Assets and Deferred  
Outflows of Resources  
**\$6,784,196,319**

2024  
Liabilities  
**\$2,900,917,780**

	2020	2021	2022	2023	2024
<b>Current assets</b>	<b>723,434,517</b>	<b>872,925,391</b>	<b>866,432,195</b>	<b>883,372,278</b>	<b>962,454,665</b>
Cash and cash equivalents	160,981,277	90,380,380	118,241,674	108,965,045	165,087,452
Short-term investments	343,068,171	550,519,440	513,436,516	492,120,473	498,683,202
Accounts receivable, net	91,105,769	96,781,946	90,543,755	103,335,878	111,739,115
Other current assets	128,279,300	135,243,625	144,210,250	178,950,882	186,944,896
<b>Noncurrent assets</b>	<b>4,138,242,706</b>	<b>4,554,015,815</b>	<b>4,358,230,588</b>	<b>4,865,241,714</b>	<b>5,384,211,975</b>
Restricted cash and cash equivalents	13,984,227	5,670,374	3,052,150	2,157,327	5,211,464
Endowment and life income investments	820,554,775	1,088,951,950	1,005,954,484	1,216,816,640	1,387,653,464
Investments for capital activities	432,015,246	400,827,180	313,646,182	420,257,423	551,765,838
Capital assets, net	2,374,645,592	2,480,115,432	2,578,423,035	2,748,890,107	2,917,944,457
Other noncurrent assets	497,042,866	578,450,879	457,154,737	477,120,217	521,636,752
<b>Deferred outflows of resources</b>	<b>185,886,393</b>	<b>410,568,293</b>	<b>344,140,710</b>	<b>444,311,087</b>	<b>437,529,679</b>
Pension and OPEB obligations	168,514,132	394,406,042	326,936,903	428,458,221	423,027,753
Other deferred outflows of resources	17,372,261	16,162,251	17,203,807	15,852,866	14,501,926
<b>Total assets and deferred outflows</b>	<b>5,047,563,616</b>	<b>5,837,509,499</b>	<b>5,568,803,493</b>	<b>6,192,925,079</b>	<b>6,784,196,319</b>
<b>Current liabilities</b>	<b>522,961,652</b>	<b>972,334,289</b>	<b>562,727,334</b>	<b>601,771,356</b>	<b>640,232,682</b>
Accounts payable and accrued liabilities	157,835,424	565,957,332	170,121,399	169,442,601	189,043,850
Current portion of unearned revenue	299,997,609	321,417,138	327,534,318	365,608,854	383,815,955
Deposits	23,805,922	20,104,012	19,172,752	18,944,651	15,851,989
Current portion of long-term debt	41,322,697	43,028,018	45,898,865	47,775,250	51,520,888
Line of credit		21,827,789			
<b>Noncurrent liabilities</b>	<b>1,999,301,337</b>	<b>2,205,759,015</b>	<b>1,903,816,313</b>	<b>2,028,561,206</b>	<b>2,260,685,098</b>
Federal advances - loan funds	8,664,137	8,210,856	5,701,032	4,710,916	6,520,202
Long-term debt, net	1,208,064,263	1,157,022,377	1,105,798,605	1,051,532,061	1,222,436,431
Pension liability	646,185,000	739,566,000	553,948,000	894,458,000	920,526,000
OPEB liability	108,975,155	276,972,007	220,215,581	57,432,788	85,550,422
Other noncurrent liabilities	27,412,782	23,987,775	18,153,095	20,427,441	25,652,043
<b>Total liabilities</b>	<b>2,522,262,989</b>	<b>3,178,093,304</b>	<b>2,466,543,647</b>	<b>2,630,332,562</b>	<b>2,900,917,780</b>
<b>Deferred inflows of resources</b>	<b>201,932,480</b>	<b>211,194,813</b>	<b>377,201,632</b>	<b>330,284,306</b>	<b>318,795,583</b>
Pension and OPEB obligations	199,594,551	202,561,162	368,698,865	314,965,903	299,743,341
Deferred inflows of resources, other	2,337,929	8,633,651	8,502,767	15,318,403	19,052,242
<b>Net position</b>	<b>2,323,368,147</b>	<b>2,863,513,474</b>	<b>2,725,058,214</b>	<b>3,232,308,211</b>	<b>3,564,482,956</b>
Net investment in capital assets	1,322,651,902	1,355,627,568	1,460,484,243	1,655,747,911	1,852,845,703
Restricted-nonexpendable	502,203,055	543,461,482	600,413,389	750,668,381	783,483,910
Restricted-expendable	436,716,309	653,094,564	561,259,065	729,908,171	810,095,959
Unrestricted	61,796,881	311,329,860	102,901,517	95,983,748	118,057,384
<b>Total liabilities, deferred inflows of resources and net position</b>	<b>5,047,563,616</b>	<b>6,252,801,591</b>	<b>5,568,803,493</b>	<b>6,192,925,079</b>	<b>6,784,196,319</b>

The amounts presented above include the University and its blended component unit, the Crimson Tide Foundation.

Source: The University of Alabama Annual Financial Reports

UAS Data Summary, May 2025

# Statements of Net Position

## The University of Alabama at Birmingham



2024  
End of Year  
Net Position  
**\$3,963,225,153**

2024  
Assets and Deferred  
Outflows of Resources  
**\$8,664,487,448**

2024  
Liabilities  
**\$3,896,148,535**

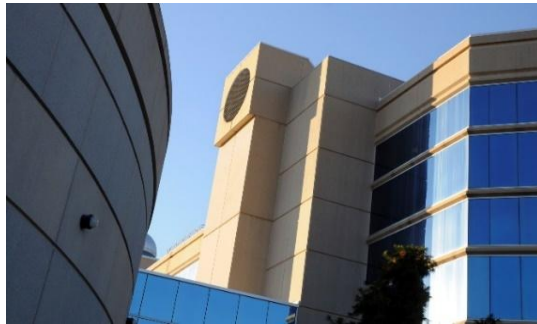
	2020	2021	2022	2023	2024
<b>Current assets</b>	<b>2,502,144,919</b>	<b>2,856,565,711</b>	<b>2,588,220,372</b>	<b>2,792,915,136</b>	<b>3,137,684,324</b>
Cash and cash equivalents	641,920,794	473,086,415	365,792,264	477,904,742	409,162,021
Short-term investments	1,196,891,055	1,626,016,694	1,417,861,440	1,479,271,187	1,825,784,415
Accounts receivable, net	530,828,890	610,753,961	642,903,571	653,630,146	694,237,959
Other current assets	132,504,180	146,708,641	161,663,097	182,109,061	208,499,929
<b>Noncurrent assets</b>	<b>3,429,405,194</b>	<b>4,034,093,843</b>	<b>3,866,332,643</b>	<b>4,181,067,733</b>	<b>4,620,535,624</b>
Restricted cash and cash equivalents*	63,368,334	47,530,089	166,349,607	112,698,050	13,953,063
Endowment and life income investments	539,974,716	711,622,472	673,323,752	739,375,564	858,991,097
Investments for capital activities	797,791,901	1,079,385,621	746,525,202	974,814,001	1,192,770,997
Capital assets, net	1,784,230,411	1,896,543,024	1,978,030,226	2,100,290,964	2,302,056,826
Other noncurrent assets	244,039,832	299,012,637	302,103,856	253,889,154	252,763,641
<b>Deferred outflows of resources</b>	<b>318,830,730</b>	<b>862,615,016</b>	<b>731,560,051</b>	<b>897,397,750</b>	<b>906,267,500</b>
Pension and OPEB obligations	305,494,017	850,533,926	716,467,779	883,589,394	893,675,324
Other deferred outflows of resources	13,336,713	12,081,090	15,092,272	13,808,356	12,592,176
<b>Total assets and deferred outflows</b>	<b>6,250,380,843</b>	<b>7,753,274,570</b>	<b>7,186,113,066</b>	<b>7,871,380,619</b>	<b>8,664,487,448</b>
<b>Current liabilities</b>	<b>800,205,475</b>	<b>802,155,961</b>	<b>658,481,417</b>	<b>706,743,961</b>	<b>774,775,325</b>
Accounts payable and accrued liabilities	596,371,343	565,957,332	387,722,765	428,419,835	486,086,101
Current portion of unearned revenue	150,006,083	164,173,628	169,413,770	175,352,481	180,559,149
Deposits	15,078,378	17,439,588	19,553,960	20,064,316	22,213,305
Current portion of long-term debt	38,749,671	54,585,413	81,790,922	82,907,329	85,916,770
<b>Noncurrent liabilities</b>	<b>2,640,898,752</b>	<b>3,277,031,877</b>	<b>2,933,216,215</b>	<b>3,120,863,160</b>	<b>3,121,373,210</b>
Federal advances - loan funds	8,483,518	6,780,063	4,743,839	3,548,954	2,510,875
Long-term debt, net	1,087,186,699	1,157,183,123	1,325,749,324	1,274,153,106	1,228,146,578
Pension liability	1,245,083,000	1,413,306,000	1,048,949,000	1,694,871,000	1,673,311,000
OPEB liability	271,431,941	685,712,303	553,774,052	148,290,100	217,404,757
Other noncurrent liabilities	28,713,594	14,050,388			
<b>Total liabilities</b>	<b>3,441,104,227</b>	<b>4,079,187,838</b>	<b>3,591,697,632</b>	<b>3,827,607,121</b>	<b>3,896,148,535</b>
<b>Deferred inflows of resources</b>	<b>521,937,116</b>	<b>556,790,678</b>	<b>876,499,063</b>	<b>807,909,689</b>	<b>805,113,760</b>
Pension and OPEB obligations	521,937,116	525,445,555	846,514,810	780,795,114	777,895,093
Deferred inflows of resources, other		31,345,123	29,984,253	27,114,575	27,218,667
<b>Net position</b>	<b>2,287,339,500</b>	<b>3,117,296,054</b>	<b>2,717,916,371</b>	<b>3,235,863,809</b>	<b>3,963,225,153</b>
Net investment in capital assets	769,281,767	786,585,310	786,548,309	859,476,471	987,497,197
Restricted-nonexpendable	405,615,948	390,793,182	435,778,701	458,967,147	489,153,662
Restricted-expendable	353,055,159	600,618,098	466,127,882	517,206,017	634,527,616
Unrestricted	759,386,626	1,339,299,464	1,029,461,479	1,400,214,174	1,852,046,678
<b>Total liabilities, deferred inflows of resources and net position</b>	<b>6,250,380,843</b>	<b>7,753,274,570</b>	<b>7,186,113,066</b>	<b>7,871,380,619</b>	<b>8,664,487,448</b>

The amounts presented above include the University and its blended component unit, the UAB Athletic Foundation.

Source: The University of Alabama at Birmingham Annual Financial Reports

# Statements of Net Position

## The University of Alabama in Huntsville



2024  
End of Year  
Net Position  
**\$291,209,507**

2024  
Assets and Deferred  
Outflows of Resources  
**\$850,376,794**

2024  
Liabilities  
**\$476,949,517**

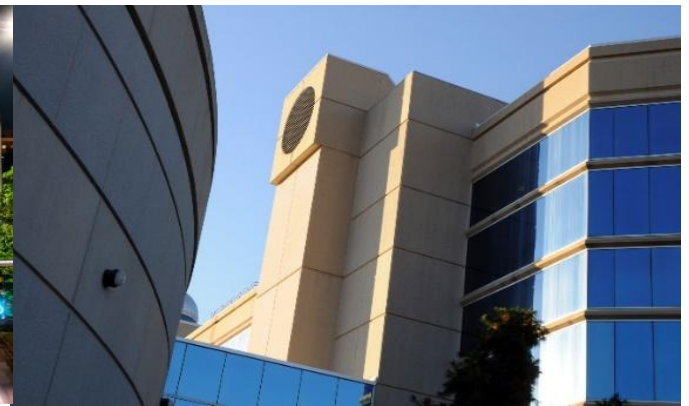
	2020	2021	2022	2023	2024
<b>Current assets</b>	<b>114,048,255</b>	<b>133,502,792</b>	<b>158,126,459</b>	<b>191,133,109</b>	<b>256,142,215</b>
Cash and cash equivalents	42,590,181	61,716,183	95,339,276	129,564,474	178,489,415
Short-term investments	11,687,721	5,472,369	1,020,292	4,421,381	13,415,253
Accounts receivable, net	39,384,004	46,040,430	44,147,087	41,497,806	45,327,734
Other current assets	20,386,349	20,273,810	17,619,804	15,649,448	18,909,813
<b>Noncurrent assets</b>	<b>407,055,475</b>	<b>431,949,954</b>	<b>419,469,761</b>	<b>482,084,596</b>	<b>487,987,248</b>
Restricted cash and cash equivalents	8,593,145	6,200,150	3,544,701	1,806,928	1,495,525
Endowment and life income investments	33,254,580	47,264,155	40,928,159	46,531,920	52,518,307
Investments for capital activities	51,937,678	66,732,908	59,049,583	108,704,155	111,154,224
Capital assets, net	310,845,959	302,315,333	306,061,306	307,152,753	308,845,336
Other noncurrent assets	2,424,113	9,437,408	9,886,012	17,888,840	13,973,856
<b>Deferred outflows of resources</b>	<b>36,476,893</b>	<b>98,710,616</b>	<b>90,140,786</b>	<b>115,690,814</b>	<b>106,247,331</b>
Pension and OPEB obligations	36,476,893	98,710,616	90,140,786	115,690,814	106,247,331
<b>Total assets and deferred outflows</b>	<b>557,580,623</b>	<b>664,163,362</b>	<b>667,737,006</b>	<b>788,908,519</b>	<b>850,376,794</b>
<b>Current liabilities</b>	<b>85,787,067</b>	<b>606,845,042</b>	<b>85,763,478</b>	<b>83,366,886</b>	<b>93,569,135</b>
Accounts payable and accrued liabilities	27,901,849	34,886,943	33,384,575	36,146,990	41,465,615
Current portion of unearned revenue	48,527,840	565,957,332	45,709,695	39,727,136	43,462,635
Deposits	4,098,522	479,767	441,422	257,840	655,672
Current portion of long-term debt	5,258,856	5,521,000	6,227,786	7,234,920	7,985,213
<b>Noncurrent liabilities</b>	<b>332,992,839</b>	<b>396,641,004</b>	<b>337,738,057</b>	<b>389,432,814</b>	<b>383,380,382</b>
Federal advances - loan funds	721,113	791,231	808,645	981,191	981,191
Long-term debt, net	147,637,713	141,912,317	137,417,128	137,943,528	130,701,913
Pension liability	161,346,000	192,513,000	146,630,000	237,205,000	231,952,000
OPEB liability	23,288,013	61,424,456	52,882,284	13,303,095	19,745,278
<b>Total liabilities</b>	<b>418,779,906</b>	<b>1,003,486,046</b>	<b>423,501,535</b>	<b>472,799,700</b>	<b>476,949,517</b>
<b>Deferred inflows of resources</b>	<b>46,357,210</b>	<b>54,300,752</b>	<b>97,192,675</b>	<b>80,431,442</b>	<b>82,217,770</b>
Pension and OPEB obligations	46,357,210	46,760,728	90,439,348	74,463,242	76,978,519
Deferred inflows of resources, other		7,540,024	6,753,327	5,968,200	5,239,251
<b>Net position</b>	<b>92,443,507</b>	<b>125,039,276</b>	<b>147,042,796</b>	<b>235,677,377</b>	<b>291,209,507</b>
Net investment in capital assets	165,514,356	162,862,000	169,013,485	165,912,607	169,486,369
Restricted-nonexpendable	10,052,197	14,741,173	14,731,520	17,887,270	18,055,282
Restricted-expendable	11,039,538	15,014,882	35,530,186	88,142,241	91,629,294
Unrestricted	(94,162,584)	(67,578,779)	(72,232,395)	(36,264,741)	12,038,562
<b>Total liabilities, deferred inflows of resources and net position</b>	<b>557,580,623</b>	<b>1,182,826,074</b>	<b>667,737,006</b>	<b>788,908,519</b>	<b>850,376,794</b>

Source: The University of Alabama in Huntsville Annual Financial Reports

UAS Data Summary, May 2025

Page 44





## Statements of Net Position

### University of Alabama System Office

	2020	2021	2022	2023	2024
<b>Current assets</b>	<b>4,519,955</b>	<b>5,152,535</b>	<b>26,209,699</b>	<b>7,929,272</b>	<b>9,165,526</b>
Cash and cash equivalents	2,398,556	3,572,577	24,286,619	4,871,243	5,683,314
Accounts receivable, net	2,121,399	1,579,958	1,923,080	3,058,029	3,482,212
<b>Noncurrent assets</b>	<b>25,599,050</b>	<b>31,199,343</b>	<b>28,335,835</b>	<b>30,022,171</b>	<b>31,570,730</b>
Capital assets, net	12,141,699	15,366,627	16,668,335	17,116,438	16,518,993
Other noncurrent assets	13,457,351	15,832,716	11,667,500	12,905,733	15,051,737
<b>Deferred outflows of resources</b>	<b>4,906,054</b>	<b>565,957,332</b>	<b>8,043,396</b>	<b>12,095,273</b>	<b>12,750,377</b>
Pension and OPEB obligations	4,906,054	11,579,686	8,043,396	12,095,273	12,750,377
<b>Total assets and deferred outflows</b>	<b>35,025,059</b>	<b>602,309,210</b>	<b>62,588,930</b>	<b>50,046,716</b>	<b>53,486,633</b>
<b>Current liabilities</b>	<b>4,440,557</b>	<b>6,198,056</b>	<b>5,360,738</b>	<b>6,227,934</b>	<b>6,086,664</b>
Accounts payable and accrued liabilities	4,440,557	6,198,056	5,360,738	6,227,934	6,086,664
<b>Noncurrent liabilities</b>	<b>20,721,771</b>	<b>29,012,619</b>	<b>21,316,384</b>	<b>26,717,895</b>	<b>29,174,695</b>
Pension liability	17,924,000	21,932,000	15,386,000	24,540,000	26,321,000
OPEB liability	2,797,771	6,971,993	5,437,399	1,537,877	2,347,731
Other noncurrent liabilities		108,626	492,985	640,018	505,964
<b>Total liabilities</b>	<b>25,162,328</b>	<b>35,210,675</b>	<b>26,677,122</b>	<b>32,945,829</b>	<b>35,261,359</b>
<b>Deferred inflows of resources</b>	<b>5,266,180</b>	<b>5,148,558</b>	<b>9,404,500</b>	<b>8,784,784</b>	<b>8,394,817</b>
Pension and OPEB obligations	5,266,180	5,148,558	9,404,500	8,784,784	8,394,817
<b>Net position</b>	<b>4,596,551</b>	<b>7,572,331</b>	<b>26,507,308</b>	<b>8,316,103</b>	<b>9,830,457</b>
Net investment in capital assets	12,141,699	15,196,211	15,846,694	16,125,501	15,550,294
Unrestricted	(7,545,148)	(7,623,880)	(8,909,919)	(7,809,398)	(5,719,837)
Restricted			19,570,533		
<b>Total liabilities, deferred inflows of resources and net position</b>	<b>35,025,059</b>	<b>47,931,564</b>	<b>62,588,930</b>	<b>50,046,716</b>	<b>53,486,633</b>

2024  
End of Year  
Net Position  
**\$9,830,457**

2024  
Assets and Deferred  
Outflows of Resources  
**\$53,486,633**

2024  
Liabilities  
**\$35,261,359**

Source: University of Alabama System Office Annual Financial Reports

# Statements of Revenues, Expenses, and Changes in Net Position

## The University of Alabama



2024  
End of Year  
Net Position  
**\$3,564,482,956**

2024  
Operating Revenues  
**\$1,057,500,977**

2024  
Nonoperating Revenues  
(Expenses)  
**\$642,868,392**

	2020	2021	2022	2023	2024
<b>Operating revenues</b>	<b>870,652,902</b>	<b>871,038,732</b>	<b>946,327,660</b>	<b>976,719,274</b>	<b>1,057,500,977</b>
Tuition and fees, net	525,521,122	481,899,451	485,015,783	489,751,283	516,178,372
Federal operating grants and contracts	61,180,497	75,652,584	89,559,584	114,288,682	143,525,263
State operating grants and contracts	31,189,670	31,175,136	33,028,646	33,993,620	33,046,567
Local operating grants and contracts	1,200,281	1,137,504	1,766,951	1,432,341	1,024,749
Private operating grants and contracts	4,587,580	7,100,867	7,211,400	5,976,538	7,403,146
Sales and services of auxiliary enterprises	158,930,066	207,244,020	220,599,553	218,138,305	226,534,302
Sales and services of educ. activities	9,866,923	11,262,637	16,934,239	17,564,235	19,247,440
Other sources - operating	78,176,763	55,566,533	92,211,504	95,574,270	110,541,138
<b>Operating expenses</b>	<b>1,033,692,957</b>	<b>1,130,581,369</b>	<b>1,149,130,230</b>	<b>1,287,972,046</b>	<b>1,453,290,752</b>
Salaries, wages, and benefits	711,111,598	732,870,387	724,478,126	806,257,448	891,842,430
Supplies and services	205,449,757	246,581,120	295,245,914	340,622,841	407,448,299
Depreciation	81,695,869	87,143,990	95,571,952	103,954,222	113,134,875
Scholarships and fellowships	35,435,733	63,985,872	33,834,238	37,137,535	40,865,148
<b>Nonoperating revenues (expenses)</b>	<b>233,369,217</b>	<b>741,016,266</b>	<b>(49,715,478)</b>	<b>513,089,807</b>	<b>642,868,392</b>
State educational appropriations	182,797,957	190,568,533	194,970,221	212,885,740	229,905,984
Gifts	54,380,178	64,036,452	44,942,506	78,861,700	46,804,226
Grants	51,528,484	115,131,392	34,709,158	36,418,977	43,342,368
Investment income (net)	(10,630,633)	409,930,867	(286,146,166)	219,906,628	359,127,912
Interest expense	(39,045,098)	(37,183,704)	(34,525,500)	(33,672,284)	(31,896,380)
Other nonoper. income/expenses (net)	(5,661,671)	(1,467,274)	(3,665,697)	(1,310,954)	(4,415,718)
<b>Income before other changes in net pos.</b>	<b>70,329,162</b>	<b>481,473,629</b>	<b>(252,518,048)</b>	<b>201,837,035</b>	<b>247,078,617</b>
<b>Other changes in net position</b>	<b>96,401,722</b>	<b>58,671,698</b>	<b>114,062,788</b>	<b>305,412,962</b>	<b>85,096,128</b>
State capital appropriations		657,766	20,953,780	91,296,042	3,066,040
Capital gifts and grants	75,191,053	19,291,609	33,892,304	46,465,094	11,487,130
Additions/adjustments to endowments	26,868,269	34,292,210	58,711,463	145,730,568	30,872,207
Intragovernmental transfers	(5,657,600)	4,430,113	505,241	21,921,258	39,670,751
<b>Increase in net position</b>	<b>166,730,884</b>	<b>540,145,327</b>	<b>(138,455,260)</b>	<b>507,249,997</b>	<b>332,174,745</b>
<b>Net position, beginning of year</b>	<b>2,156,637,263</b>	<b>2,323,368,147</b>	<b>2,863,513,474</b>	<b>2,725,058,214</b>	<b>3,232,308,211</b>
<b>Net position, end of year</b>	<b>2,323,368,147</b>	<b>2,863,513,474</b>	<b>2,725,058,214</b>	<b>3,232,308,211</b>	<b>3,564,482,956</b>

The amounts presented above include the University and its blended component unit, the Crimson Tide Foundation.

Source: The University of Alabama Annual Financial Reports



# Statements of Revenues, Expenses, and Changes in Net Position

## The University of Alabama at Birmingham



2024  
End of Year  
Net Position  
**\$3,963,225,153**

2024  
Operating Revenues  
**\$5,478,554,074**

2024  
Nonoperating Revenues  
(Expenses)  
**\$1,018,215,163**

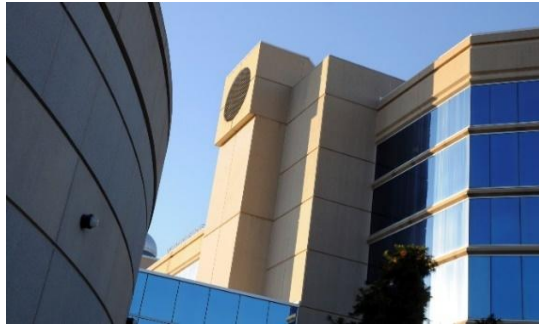
	2020	2021	2022	2023	2024
<b>Operating revenues</b>	<b>3,712,470,836</b>	<b>4,133,641,841</b>	<b>4,511,367,527</b>	<b>5,098,057,587</b>	<b>5,478,554,074</b>
Tuition and fees, net	244,929,737	243,476,387	238,778,078	245,459,954	245,453,396
Federal operating grants and contracts	392,328,131	431,152,917	465,169,073	600,264,365	534,363,989
State operating grants and contracts	9,637,192	10,601,841	12,555,524	14,457,544	16,712,845
Local operating grants and contracts	2,743,274	2,733,401	2,610,062	6,401,027	508,921
Private operating grants and contracts	79,212,985	82,238,852	92,103,676	103,781,415	106,114,564
Sales and services of auxiliary enterprises	762,448,115	782,355,857	822,174,964	887,131,957	939,959,523
Sales and services of hospitals	2,109,833,577	2,472,801,416	2,784,105,444	3,122,236,928	3,526,933,927
Sales and services of educ. activities	59,351,275	67,666,602	66,563,264	72,309,309	75,850,347
Other sources - operating	51,986,550	40,614,568	27,307,442	46,015,088	32,656,562
<b>Operating expenses</b>	<b>3,953,876,475</b>	<b>4,348,737,086</b>	<b>4,823,032,534</b>	<b>5,437,069,839</b>	<b>5,866,314,029</b>
Salaries, wages, and benefits	1,766,044,825	1,963,628,897	2,028,850,498	2,262,252,884	2,445,548,231
Supplies and services	2,001,552,207	2,154,297,244	2,557,954,234	2,922,830,046	3,153,499,006
Depreciation	150,994,130	175,757,850	203,113,354	223,712,966	231,174,105
Scholarships and fellowships	35,285,313	55,053,095	33,114,448	28,273,943	36,092,687
<b>Nonoperating revenues (expenses)</b>	<b>430,739,578</b>	<b>1,006,632,642</b>	<b>(123,207,304)</b>	<b>730,470,993</b>	<b>1,018,215,163</b>
State educational appropriations	306,964,712	314,953,056	332,448,930	369,169,834	375,199,643
Gifts	18,705,016	61,112,310	37,066,668	26,226,067	36,422,598
Grants	129,137,659	105,506,173	83,158,746	51,700,575	40,893,699
Investment income (net)	15,735,962	555,919,121	(521,865,832)	319,436,415	602,041,568
Interest expense	(40,126,392)	(38,235,066)	(42,445,202)	(42,220,139)	(40,780,159)
Other nonoper. income/expenses (net)	322,621	7,377,048	(11,570,614)	6,158,241	4,437,814
<b>Income before other changes in net pos.</b>	<b>189,333,939</b>	<b>791,537,397</b>	<b>(434,872,311)</b>	<b>391,458,741</b>	<b>630,455,208</b>
<b>Other changes in net position</b>	<b>19,610,121</b>	<b>38,419,157</b>	<b>35,492,628</b>	<b>126,488,697</b>	<b>96,906,136</b>
State capital appropriations		3,610,767	26,379,881	92,769,897	5,211,738
Capital gifts and grants	1,854,223	1,645,260	12,806,674	10,888,728	18,114,353
Additions/adjustments to endowments	17,755,898	33,163,130	44,941,789	22,830,072	30,430,045
Intragovernmental transfers			(48,635,716)		43,150,000
<b>Increase in net position</b>	<b>208,944,060</b>	<b>829,956,554</b>	<b>(399,379,683)</b>	<b>517,947,438</b>	<b>727,361,344</b>
<b>Net position, beginning of year</b>	<b>2,078,395,440</b>	<b>2,287,339,500</b>	<b>3,117,296,054</b>	<b>2,717,916,371</b>	<b>3,235,863,809</b>
<b>Net position, end of year</b>	<b>2,287,339,500</b>	<b>3,117,296,054</b>	<b>2,717,916,371</b>	<b>3,235,863,809</b>	<b>3,963,225,153</b>

The amounts presented above include the University and its blended component unit, the UAB Athletic Foundation.

Source: The University of Alabama at Birmingham Annual Financial Reports

# Statements of Revenues, Expenses, and Changes in Net Position

## The University of Alabama in Huntsville



2024  
End of Year  
Net Position  
**\$291,209,507**

2024  
Operating Revenues  
**\$214,699,447**

2024  
Nonoperating Revenues  
(Expenses)  
**\$108,158,519**

	2020	2021	2022	2023	2024
<b>Operating revenues</b>	<b>203,201,705</b>	<b>215,612,420</b>	<b>235,958,812</b>	<b>229,393,329</b>	<b>214,699,447</b>
Tuition and fees, net	71,219,313	71,283,876	75,541,635	75,728,883	68,708,075
Federal operating grants and contracts	105,431,257	122,034,844	133,971,106	125,137,893	119,386,359
State operating grants and contracts	4,373,211	4,609,046	5,296,529	5,526,996	4,391,296
Private operating grants and contracts	2,262,876	1,808,959	2,458,988	2,826,679	2,264,200
Sales and services of auxiliary enterprises	15,924,237	11,512,344	13,349,046	16,140,647	15,308,354
Sales and services of educ. activities	3,990,811	4,363,351	5,341,508	4,032,231	4,641,163
<b>Operating expenses</b>	<b>261,335,136</b>	<b>294,568,209</b>	<b>299,498,645</b>	<b>300,920,245</b>	<b>300,701,339</b>
Salaries, wages, and benefits	175,461,558	190,481,360	188,679,058	204,316,017	211,953,114
Supplies and services	63,438,366	71,413,290	78,571,968	72,065,103	63,837,044
Depreciation	18,124,586	18,273,914	19,336,020	20,326,789	21,554,029
Scholarships and fellowships	4,310,626	14,399,645	12,911,599	4,212,336	3,357,151
<b>Nonoperating revenues (expenses)</b>	<b>63,468,048</b>	<b>109,300,197</b>	<b>60,044,081</b>	<b>95,083,158</b>	<b>108,158,519</b>
State educational appropriations	55,333,602	57,378,734	58,322,523	73,678,125	71,328,381
Gifts	2,182,254	7,868,683	4,615,976	3,398,143	2,834,837
Grants	14,054,697	27,651,693	19,528,130	9,170,783	10,032,782
Investment income (net)	(1,026,843)	22,472,701	(16,315,109)	14,685,547	28,256,588
Interest expense	(7,038,136)	(5,962,315)	(5,893,703)	(5,403,646)	(4,783,195)
Other nonoper. income/expenses (net)	(37,526)	(109,299)	(213,736)	(445,794)	489,127
<b>Income before other changes in net pos.</b>	<b>5,334,617</b>	<b>30,344,408</b>	<b>(3,495,752)</b>	<b>23,556,242</b>	<b>22,156,627</b>
<b>Other changes in net position</b>	<b>844,735</b>	<b>2,251,361</b>	<b>25,499,272</b>	<b>65,078,339</b>	<b>33,375,503</b>
State capital appropriations		105,9960	25,179,272	21,914,057	2,450,031
Capital gifts and grants	844,735	1,191,401	320,000	20,401,460	25,500
Additions/adjustments to endowments				3,192,289	149,971
Intragovernmental transfers				19,570,533	30,750,000
<b>Increase in net position</b>	<b>6,179,352</b>	<b>32,595,769</b>	<b>22,003,520</b>	<b>88,634,581</b>	<b>55,532,130</b>
<b>Net position, beginning of year</b>	<b>86,264,155</b>	<b>92,443,507</b>	<b>125,039,276</b>	<b>147,042,796</b>	<b>235,677,377</b>
<b>Net position, end of year</b>	<b>92,443,507</b>	<b>125,039,276</b>	<b>147,042,796</b>	<b>235,677,377</b>	<b>291,209,507</b>

Source: The University of Alabama in Huntsville Annual Financial Reports



## Statements of Revenues, Expenses, and Changes in Net Position

2024  
End of Year  
Net Position

**\$9,830,457**

2024  
Operating Revenues  
**\$25,600,916**

2024  
Nonoperating Revenues  
(Expenses)  
**\$136,773,292**

### University of Alabama System Office

	2020	2021	2022	2023	2024
<b>Operating revenues</b>	<b>21,848,976</b>	<b>21,848,974</b>	<b>22,176,709</b>	<b>24,426,997</b>	<b>25,600,916</b>
Other sources - operating	21,848,976	21,848,974	22,176,709	24,426,997	25,600,916
<b>Operating expenses</b>	<b>21,485,455</b>	<b>21,248,612</b>	<b>20,985,630</b>	<b>24,458,291</b>	<b>27,221,139</b>
Salaries, wages, and benefits	18,207,468	17,984,217	16,988,282	19,860,665	22,871,870
Supplies and services	2,865,442	2,795,946	3,219,400	3,688,250	3,286,634
Depreciation	412,545	468,449	777,948	909,376	1,062,635
<b>Nonoperating revenues (expenses)</b>	<b>(273,779)</b>	<b>2,375,419</b>	<b>17,743,898</b>	<b>1,410,622</b>	<b>136,773,292</b>
State educational appropriations			19,570,533		133,638,715
Gifts			24,494		
Investment income (net)	(284,586)	2,375,365	(1,841,903)	1,164,920	2,146,004
Interest expense		(5,024)	(24,074)	(9,583)	(26,113)
Other nonoperating income/expenses (net)	10,807	5,078	14,848	255,285	1,014,686
<b>Other changes in net position</b>				<b>(19,570,533)</b>	<b>(133,638,715)</b>
<b>Increase in net position</b>	<b>89,742</b>	<b>2,975,780</b>	<b>18,934,977</b>	<b>(18,191,205)</b>	<b>1,514,354</b>
<b>Net position, beginning of year</b>	<b>4,506,809</b>	<b>4,596,551</b>	<b>7,572,331</b>	<b>26,507,308</b>	<b>8,316,103</b>
<b>Net position, end of year</b>	<b>4,596,551</b>	<b>7,572,331</b>	<b>26,507,308</b>	<b>8,316,103</b>	<b>9,830,457</b>

Source: University of Alabama System Office Annual Financial Reports

UAS Data Summary, May 2025

Page 49



# University of Alabama System®

---

THE UNIVERSITY OF ALABAMA  
THE UNIVERSITY OF ALABAMA AT BIRMINGHAM  
THE UNIVERSITY OF ALABAMA IN HUNTSVILLE  
THE UAB HEALTH SYSTEM

**System Analytics and Business Intelligence**  
**Office of Academic and Student Affairs**  
500 University Blvd. E | Tuscaloosa, AL 35401  
(205) 348-8347